

*J*oint *A*dministrative *C*ommittee on *A*cademic *P*rograms

Transfers from the Wisconsin Technical Colleges to the University of Wisconsin System
October 2001

Prepared by:
The University of Wisconsin System
Office of Policy Analysis and Research
1534 Van Hise Hall
1220 Linden Drive
Madison, WI 53706
608.262.6441
OPAR@uwsa.edu
<http://www.uwsa.edu/opar>

INTRODUCTION

The following report, produced for the Joint Administration Committee on Academic Programs (JACAP), includes information on University of Wisconsin (UW) System transfer students with particular attention to transfers from the Wisconsin Technical College System (WTCS). Transfer trends are shown for both new and re-entry transfer students. New transfer students are students who have not previously enrolled at the institution to which they transferred; re-entry/transfer students are re-enrolling at a UW institution with transfer credits. Demographic and outcome information are shown only for new transfers.

There has been a longstanding interest in learning more about the WTCS students transferring from college parallel programs and courses offered at Madison Area Technical College, Milwaukee Area Technical College or Nicolet Area Technical College. New in this year's report is a section specifically about these students and how their demographics and outcomes compare to both non-college parallel transfer students and non-WTCS transfer students.

ENROLLMENT INFORMATION

During the 2000-01 year¹, 15,178 students transferred within or into the UW System (Figure 1). Of these transfer students, 13,230 were new transfer students and 1,948 were re-entry transfer students. The number of new transfer students increased by 554 (4.4%) between 1999-00 and 2000-01. The number of re-entry transfer students increased by 112 (6.1%) over the same time period.

Figure 1
Transfer Students Into and Within the UW System by Entrance Status
1996-97 to 2000-01

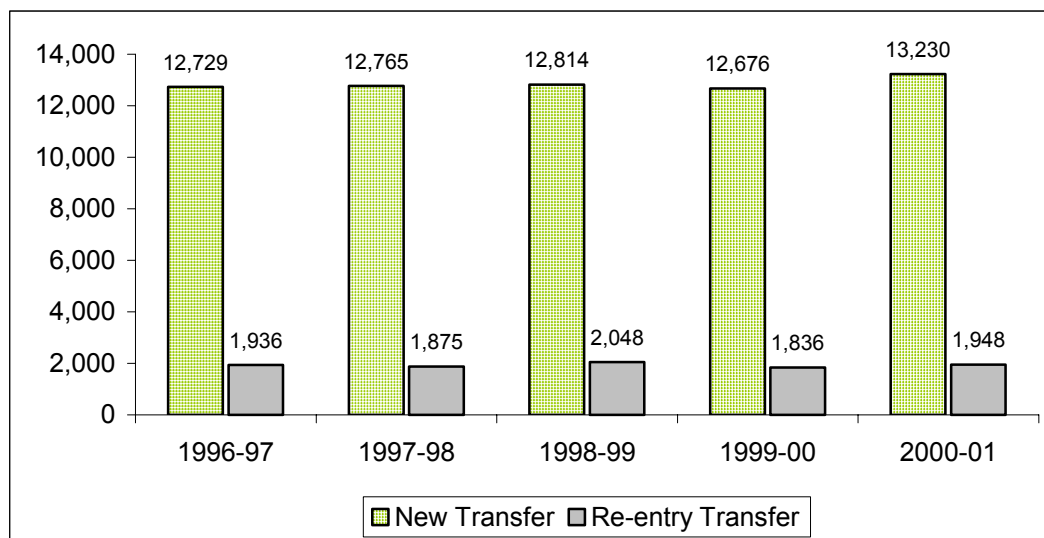


Figure 2 illustrates the trend in WTCS new and re-entry transfers into the UW System. In 2000-01, there were 2,290 new transfers from WTCS districts into the UW System. This is an increase of 167 students, or 7.9%, from 1999-00. The number of re-entry transfers from WTCS increased by 55 (12.1%) from 1999-00.

Between 1999-00 and 2000-01, the UW System experienced increases in new transfers from ten WTCS districts (ranging from 3.0% to 157.1%), decreases from five WTCS districts (ranging from 2.3% to 16.4%) and one district was unchanged. Appendix A shows the five-year trend in new transfers from WTCS to the UW System by WTCS district. Appendix B shows the one-year and five-year percent change in new transfers by WTCS district.

Figure 2
WTCS Transfer Students to the UW System by Entrance Status
1996-97 to 2000-01

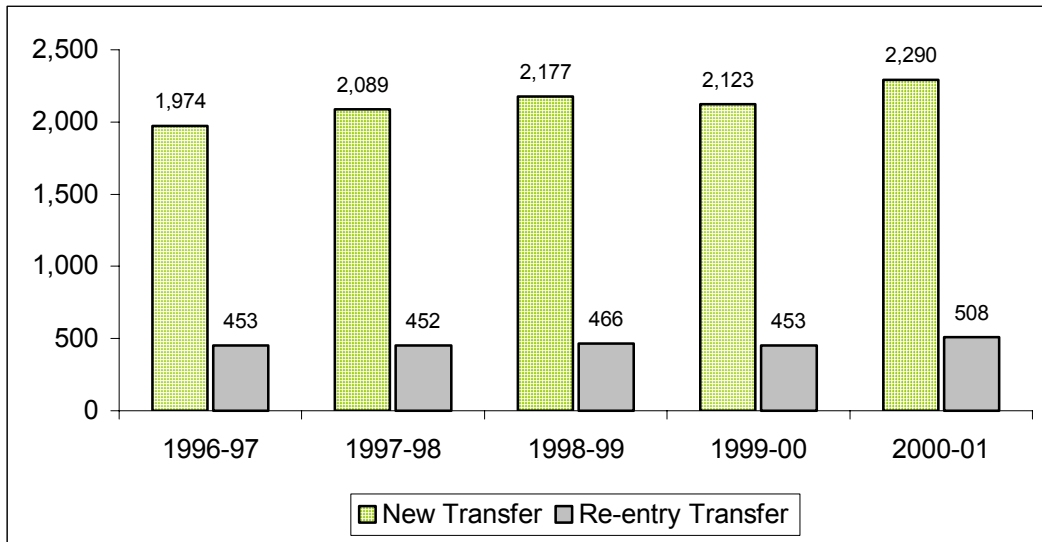
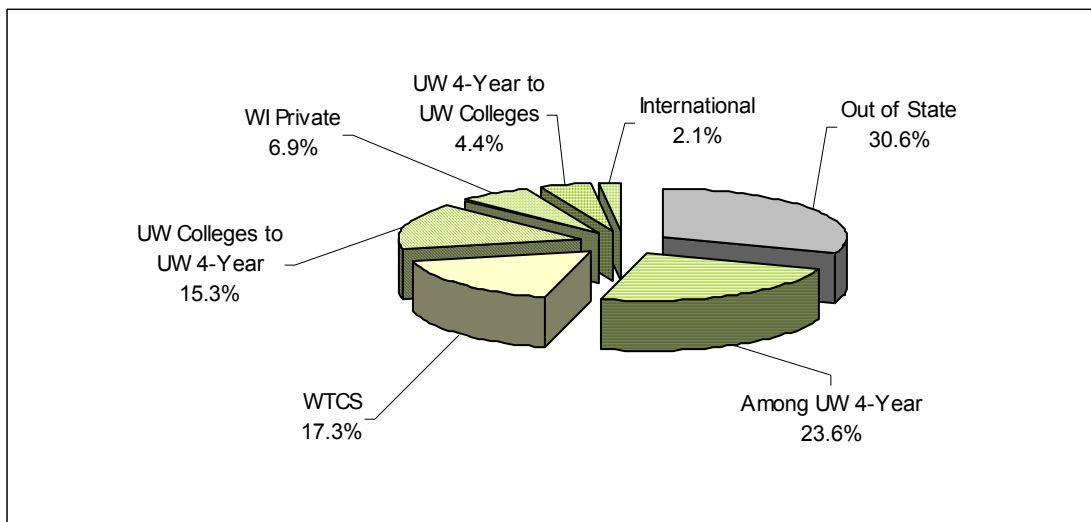


Figure 3 illustrates the proportion of new transfer students within and into the UW System in the 2000-01 year by type of sending institution². WTCS new transfer students constituted 17.3% of the total new transfer population, a slightly higher proportion than in the past few years. The largest share of new transfers into the UW System, 30.6%, continues to come from out-of-state institutions. However, intra-UW System transfers³ (43.3% of transfers) continue to be the largest source of new transfer students for UW institutions. See Appendix C for details on new transfer students and Appendix D for details on re-entry transfer students.

Figure 3
New Transfer Students to the UW System by Type of Sending Institution
2000-01



DEMOGRAPHIC INFORMATION

Figure 4 shows the distribution of the Fall 2000 new transfer cohort by classification⁴. Fifty-three percent of WTCS new transfer students entered the UW System as freshmen compared to twenty-three percent of the remaining Fall 2000 new transfer cohort. This distribution has been relatively constant over the last five years. Appendix E shows the distribution of the Fall 2000 WTCS new transfer cohort to the UW System by classification and WTCS district.

Figure 4
Fall 2000 New Transfer Cohort
by Student Classification at Entrance

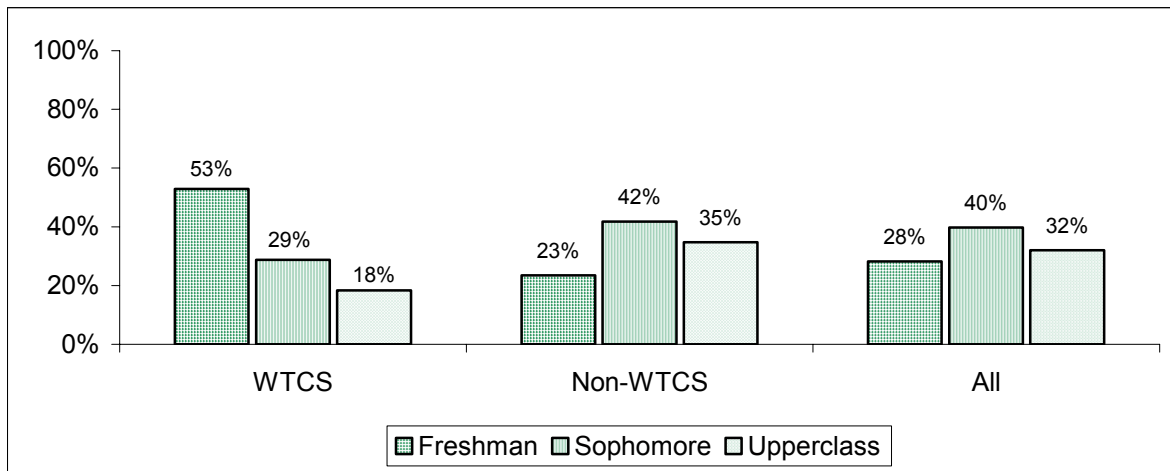


Figure 5 shows the full-time/part-time status⁵ of the Fall 2000 transfer cohort based on the first semester credit load. Thirty-two percent (32%) of the new transfer students from WTCS districts were part-time students while sixteen percent of the remaining Fall 2000 new transfer cohort were part-time students. This distribution has been very constant over the last five years. Appendix F shows the distribution of the WTCS new transfers to the UW System by full-time/part-time status and WTCS district.

Figure 5
Fall 2000 New Transfer Cohort
by Full-Time/Part-Time Status

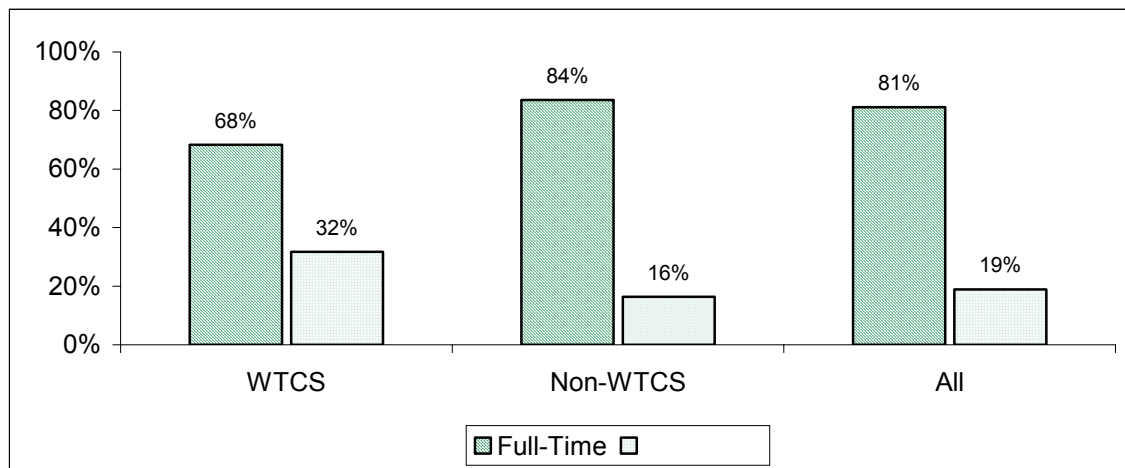


Figure 6 shows the age distribution of the Fall 2000 entering new transfer cohort. Thirty-two percent of new transfer students from the WTCS were 25 or older while 15% of the remaining Fall 2000 new transfer students were 25 or older. This distribution has remained constant over the last five years. Appendix G shows the distribution of the WTCS new transfers to the UW System by age group and WTCS district.

Figure 6
Fall 2000 New Transfer Cohort
by Age Group

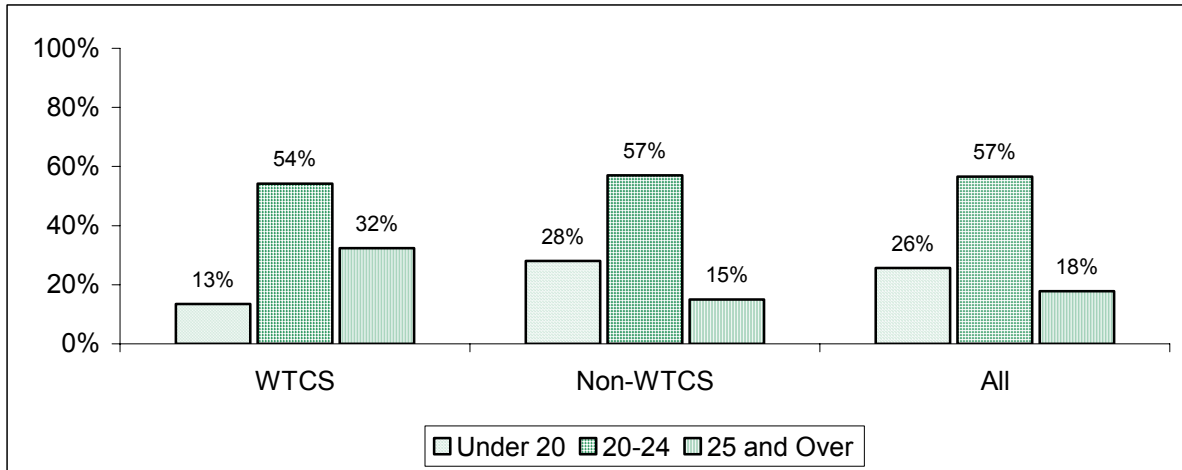
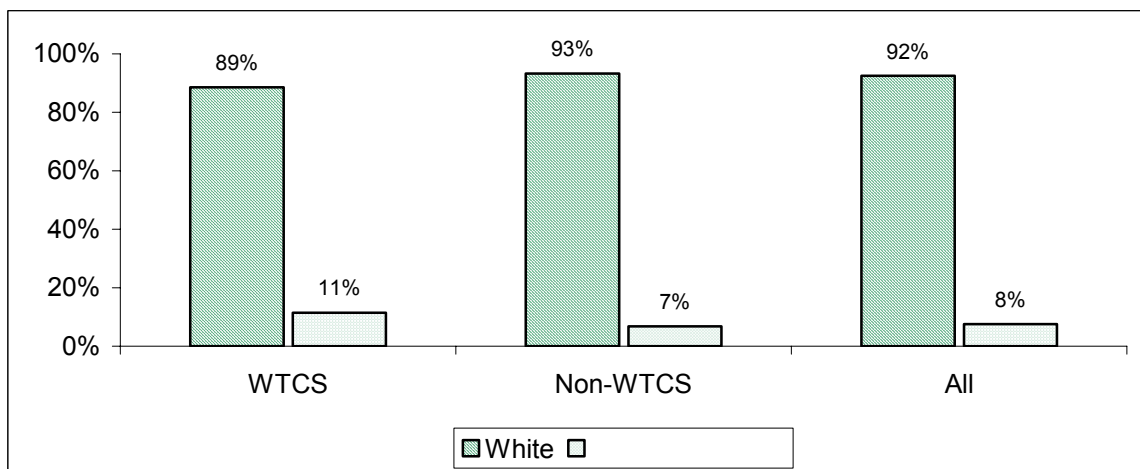


Figure 7 shows the race/ethnicity distribution of the Fall 2000 entering new transfer cohort. Eleven percent of new transfer students from the WTCS were students of color while 7% of the remaining Fall 2000 new transfer students were students of color. This distribution has remained very constant over the last five years. Appendix H shows the distribution of the WTCS new transfers to the UW System by race/ethnicity group and WTCS district.

Figure 7
Fall 2000 New Transfer Cohort
by Race/Ethnicity Group



OUTCOME INFORMATION

Figure 8 shows the first semester grade-point averages (GPA) for Fall 1998, 1999, and 2000 new transfer students. The average first semester GPA for all new transfer students is 2.9 on a 4.0 scale. There has been no change in the average first semester GPA for the past three groups of total fall new transfer entrants. The average first semester GPA for Fall 2000 WTCS new transfer students, at 2.8, is slightly below the overall average, which includes all new transfer students. Appendix I shows the average first semester GPA of the Fall 2000 WTCS new transfers to the UW System by WTCS district.

Figure 8
Average First-Semester GPAs of New Transfers
by Type of Sending Institution and Cohort Year

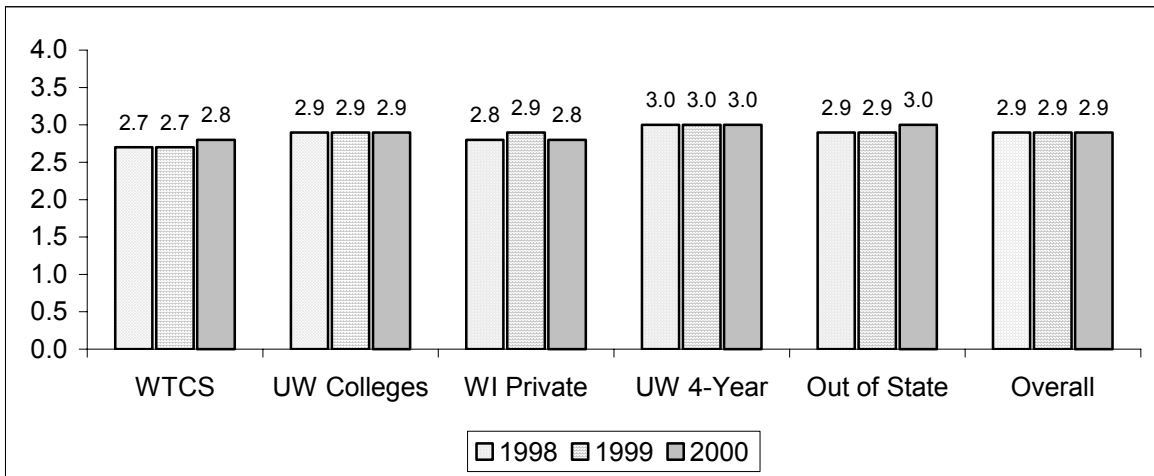
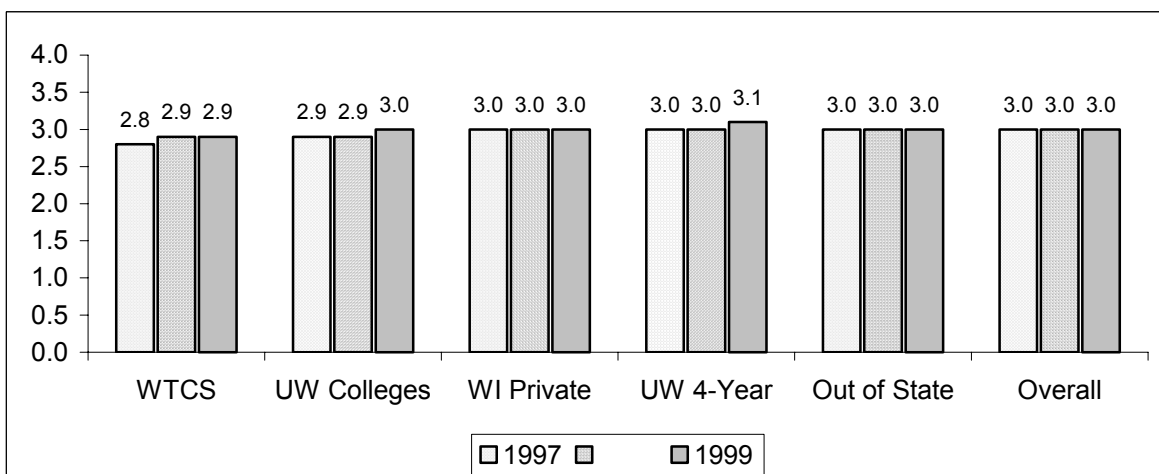


Figure 9 shows the first year grade-point averages (GPA) for Fall 1997, 1998, and 1999 new transfer students. The average first year GPA for all new transfer students is 3.0 on a 4.0 scale. There has been no change in the average first year GPA for the past three groups of total fall new transfer entrants. The average first year GPA for Fall 1999 WTCS new transfer students, at 2.9, is slightly below the overall average. Appendix J shows the average first year GPA of the Fall 1999 WTCS new transfers to the UW System by WTCS district.

Figure 9
Average First-Year GPAs of New Transfers
by Type of Sending Institution and Cohort Year



Figures 10, 11 and 12 show a four-year trend in the 5th year graduation⁶ and 6th year retention⁷ rates of transfers into and within the UW System by type of sending institution and classification at the time of transfer. A combination of the 5th year graduation and 6th year retention rates can be used to predict the eventual transfer student graduation rate.

Figure 10 shows the 5th year graduation and 6th year retention rates for the transfer cohort that entered the UW System classified as freshmen. The combined rate for WTCS freshman transfer students (42%) is higher than the combined rate of freshman transfers from Wisconsin private institutions (35%). The combined rate for WTCS freshman transfer students is below the combined rate for freshman transfers from UW Colleges (65%) and freshman transfers from UW four-year institutions (54%). The 5th year graduation rate of 28% for the Fall 1994 WTCS new transfer cohort was the highest of the past four cohorts.

Figure 10
5th Year Graduation and 6th Year Retention Rates for Freshman Transfer Students
by Type of Sending Institution and Cohort Year

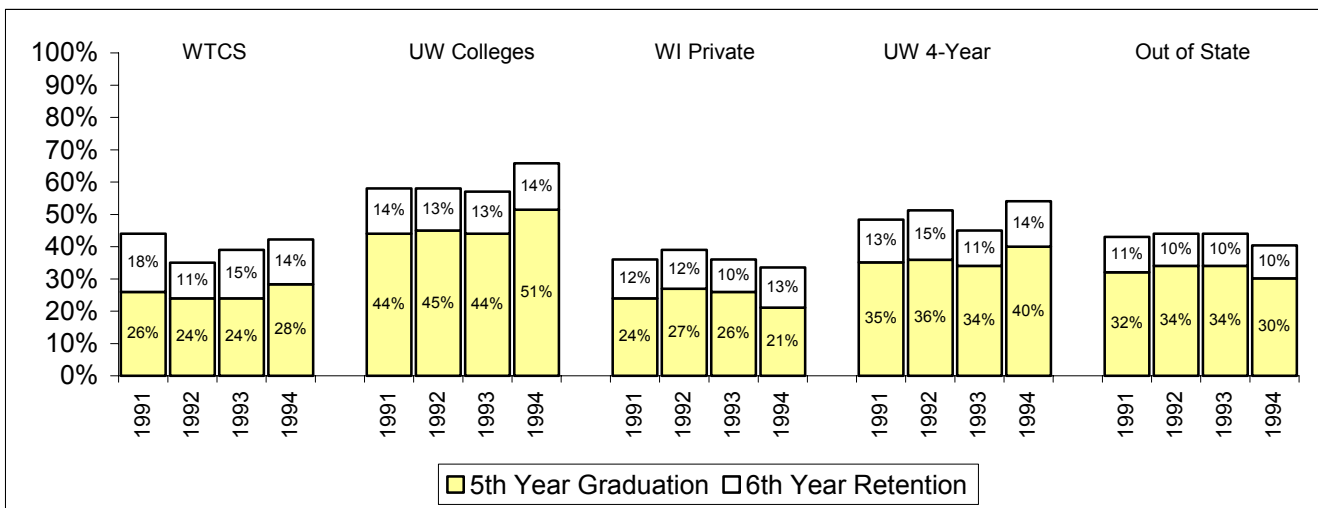


Figure 11 shows the 5th year graduation and 6th year retention rates for the transfer cohort that entered the UW System classified as sophomores. For the four years shown, the combined rate for WTCS sophomore transfers (59%) is above the combined rate for sophomore transfers from Wisconsin private institutions (53%). The combined rate for WTCS sophomore transfers is below the combined rate for sophomore transfers from both UW Colleges (68%) and UW four-year institutions (71%). The combined rate for WTCS sophomore transfers is the highest of the past four cohorts.

Figure 11
5th Year Graduation and 6th Year Retention Rates for Sophomore Transfer Students
by Type of Sending Institution and Cohort Year

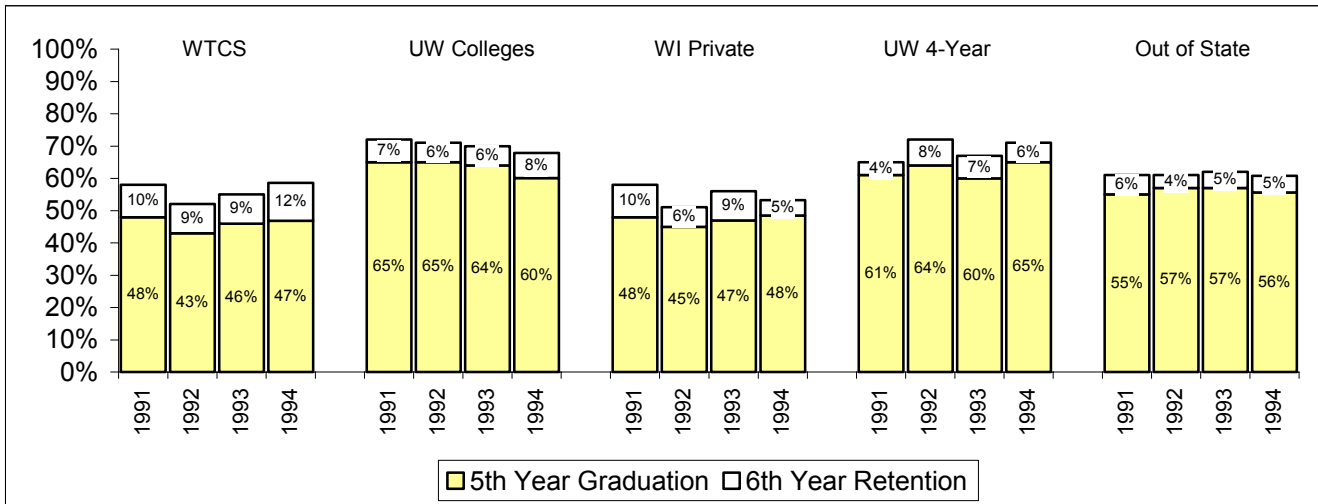
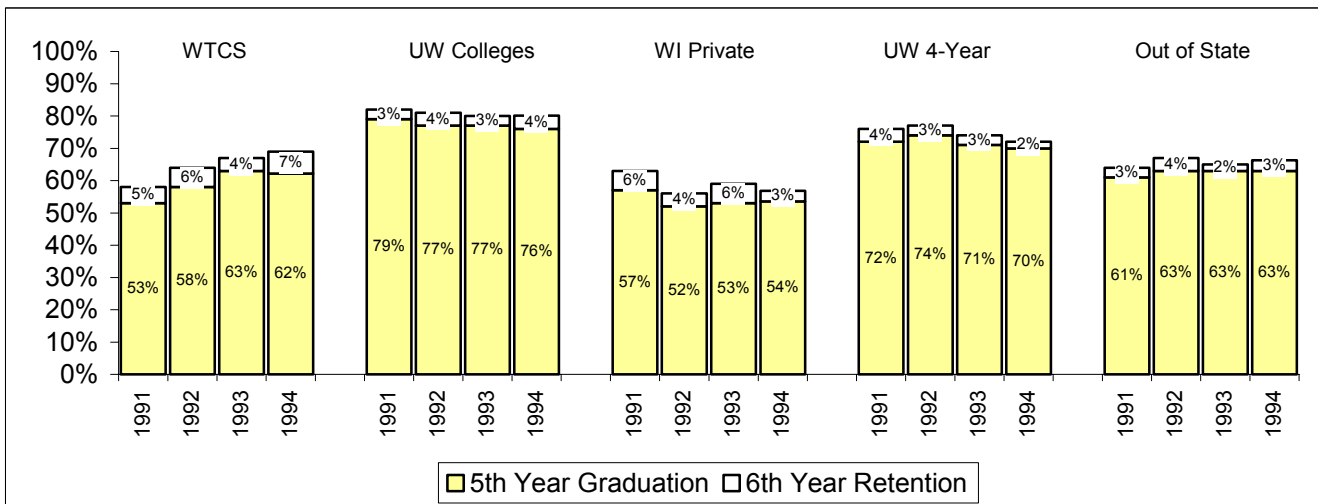


Figure 12 shows the combined 5th year graduation and 6th year retention rates for the transfer cohort that entered the UW System classified as juniors and seniors (upperclass) students. The combined rate for WTCS upperclass transfers generally exceeds the rate of upperclass transfers from Wisconsin private institutions and, in recent years, has been comparable to the rate of transfers from out-of-state institutions. The combined rate for WTCS transfers (69%) is below that of upperclass transfers from UW Colleges (80%) and UW four-year institutions (72%).

Figure 12
5th Year Graduation and 6th Year Retention Rates for Upperclass Transfer Students
by Type of Sending Institution and Cohort Year



COLLEGE PARALLEL TRANSFER STUDENTS

The UW System's new transfer students from the WTCS participated in a variety of WTCS programs and courses. Many of these students were enrolled in a college parallel program or in college parallel courses at Madison Area Technical College, Milwaukee Area Technical College or Nicolet Area Technical College. The WTCS college parallel programs provide courses comparable to those required for the first two years of a UW Bachelor's degree. Students in these programs may transfer up to 72 college parallel credits towards a UW degree. WTCS transfer students who took associate degree (occupational) courses may transfer up to 15 general education credits towards a UW Bachelor's degree. In addition, recent WTCS associate degree (occupational) transfer students to UW institutions may have also transferred up to two math and/or science courses. For the purposes of this report, the UW System's new transfer students were matched to program and course files provided by the WTCS and were categorized as college parallel transfers, non-college parallel transfers, or dual enrolled transfer students⁸.

Since 1996-97, the number of WTCS transfer students from non-college parallel programs/courses has more than doubled while the number of WTCS transfer students from college parallel programs/courses has decreased slightly⁹. Of the UW System's new transfer students from WTCS districts in the 2000-01 academic year, 27% were college parallel transfer students and 55% were non-college parallel transfer students. Since 2000-01 program and course files were not available, it is not known how many of this year's transfer students were dual enrolled. Seventeen percent (17%) of the UW System's new transfer students from the WTCS had no corresponding WTCS program or course record indicating that they had enrolled in the WTCS prior to 1995-96 (the earliest files provided). See Appendix K for details.

Table 1
UW System New Transfer Students from WTCS Districts
by Transfer Year and WTCS Enrollment Type

	College Parallel		Non-College Parallel		Dual Enrolled		No Match		Total
	#	%	#	%	#	%	#	%	
2000-01	614	27%	1,235	55%	---	---	391	17%	2,240
1999-00	583	28%	1,087	52%	208	10%	216	10%	2,094
1998-99	596	28%	1,064	50%	196	9%	281	13%	2,137
1997-98	618	30%	843	41%	186	9%	400	20%	2,047
1996-97	649	33%	576	30%	178	9%	546	28%	1,949

Table 2 shows the distribution of Fall new transfers from WTCS districts by WTCS enrollment type and student classification at entrance. Sixty-one percent (61%) of the Fall 2000 non-college parallel new transfer students from WTCS entered the UW System as freshmen compared to 29% of the college parallel transfers. The distribution of students by classification at entrance has remained relatively constant over the past five years. The proportion of college parallel students who enter the UW System as freshmen (29%) is greater than the proportion of non-WTCS transfers entering as freshmen (23%).

Table 2
UW System Fall New Transfer Students from WTCS Districts
by WTCS Enrollment Type and Student Classification at Entrance

	Students	Freshman		Sophomore		Upperclass	
		College Parallel	Non-College Parallel	College Parallel	Non-College Parallel	College Parallel	Non-College Parallel
2000-01	1,278	29%	61%	43%	25%	28%	14%
1999-00	1,176	31%	67%	45%	22%	25%	11%
1998-99	1,151	29%	58%	43%	25%	28%	17%
1997-98	1,031	29%	61%	46%	22%	25%	17%
1996-97	887	33%	62%	48%	20%	19%	18%

Note: Does not include UW new transfer students who had no match on the WTCS program and course files or students who were dual enrolled.

Table 3 shows the distribution of Fall new transfers from WTCS districts by WTCS enrollment type and first semester credit load. Seventy-seven percent (77%) of the WTCS college parallel transfer students enrolled full time compared to 69% of the non-college parallel transfer students. Over the past five years, the proportion of WTCS transfer students enrolling in the UW System on a full-time basis has decreased slightly. The increase in the proportion of part-time transfer students has been more dramatic for non-college parallel transfer students (10 percentage points) than it has been for college parallel transfer students (5 percentage points). The proportion of college parallel transfer students who enroll full time (77%) is less than the proportion of non-WTCS transfer students who enroll full-time (84%).

Table 3
UW System Fall New Transfer Students from WTCS Districts
by WTCS Enrollment Type and Full-Time/Part-Time Status

	Students	Full-Time		Part-Time	
		College Parallel	Non-College Parallel	College Parallel	Non-College Parallel
2000-01	1,278	77%	69%	23%	31%
1999-00	1,176	81%	73%	19%	27%
1998-99	1,151	81%	73%	19%	27%
1997-98	1,031	81%	75%	19%	25%
1996-97	887	82%	79%	18%	21%

Note: Does not include UW new transfer students who had no match on the WTCS program and course files or students who were dual enrolled.

Table 4 shows the distribution of Fall new transfers from WTCS districts by WTCS enrollment type and age group. In Fall 2000, 17% of college parallel transfers were under 20 compared to 12% of non-college parallel transfer students. In general, college parallel transfers tend to be slightly younger than their non-college parallel counterparts. The proportion of college parallel transfer students who are under 20 (17%) is lower than the proportion of non-WTCS transfer students who are under 20 (28%).

Table 4
UW System Fall New Transfer Students from WTCS Districts
by WTCS Enrollment Type and Age Group

	Students	Under 20		20-24		25 and Over	
		College Parallel	Non-College Parallel	College Parallel	Non-College Parallel	College Parallel	Non-College Parallel
2000-01	1,278	17%	12%	58%	61%	25%	26%
1999-00	1,176	20%	15%	61%	64%	19%	21%
1998-99	1,151	17%	14%	58%	61%	25%	25%
1997-98	1,031	18%	13%	57%	63%	25%	24%
1996-97	887	20%	19%	55%	60%	24%	21%

Note: Does not include UW new transfer students who had no match on the WTCS program and course files or students who were dual enrolled.

Table 5 shows the distribution of Fall new transfers from WTCS districts by WTCS enrollment type and race/ethnicity group. In Fall 2000, 16% of college parallel transfers were students of color compared to 10% of non-college parallel transfer students. In general, a slightly higher proportion of college parallel transfer students are students of color. This is likely due to the fact that two of the three college parallel programs are in WTCS districts with higher proportions of students of color.

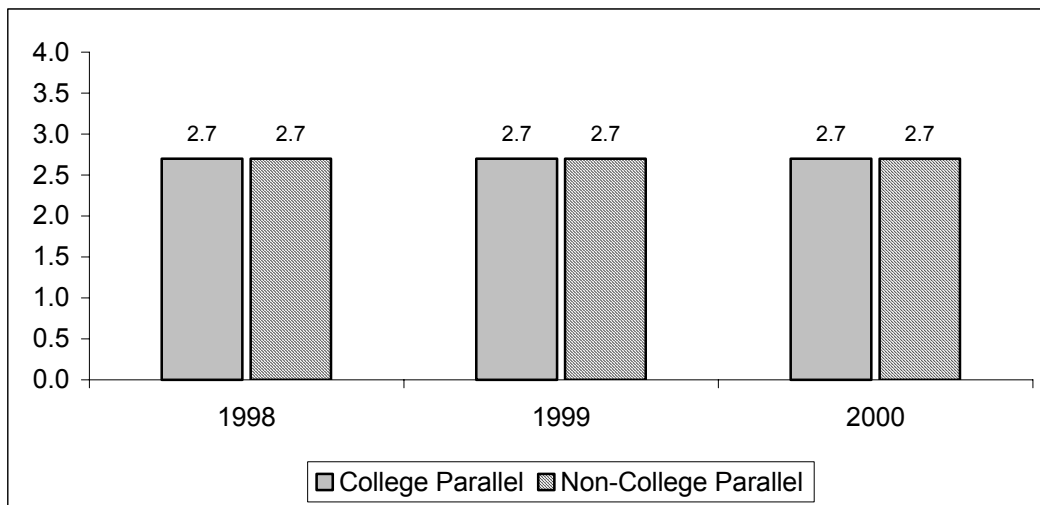
Table 5
UW System Fall New Transfer Students from WTCS Districts
by WTCS Enrollment Type and Race/Ethnicity Group

	Students	Students of Color		White	
		College Parallel	Non-College Parallel	College Parallel	Non-College Parallel
2000-01	1,278	16%	10%	84%	90%
1999-00	1,176	16%	8%	84%	92%
1998-99	1,151	15%	9%	85%	91%
1997-98	1,031	16%	8%	84%	92%
1996-97	887	12%	9%	88%	91%

Note: Does not include UW new transfer students who had no match on the WTCS program and course files or students who were dual enrolled.

Figure 13 shows the first-semester GPAs of Fall new transfers from WTCS districts by WTCS enrollment type. Both college parallel and non-college parallel transfers have an average of 2.7 on a 4.0 scale after their first semester of enrollment. These GPAs have been stable over the past three fall cohorts.

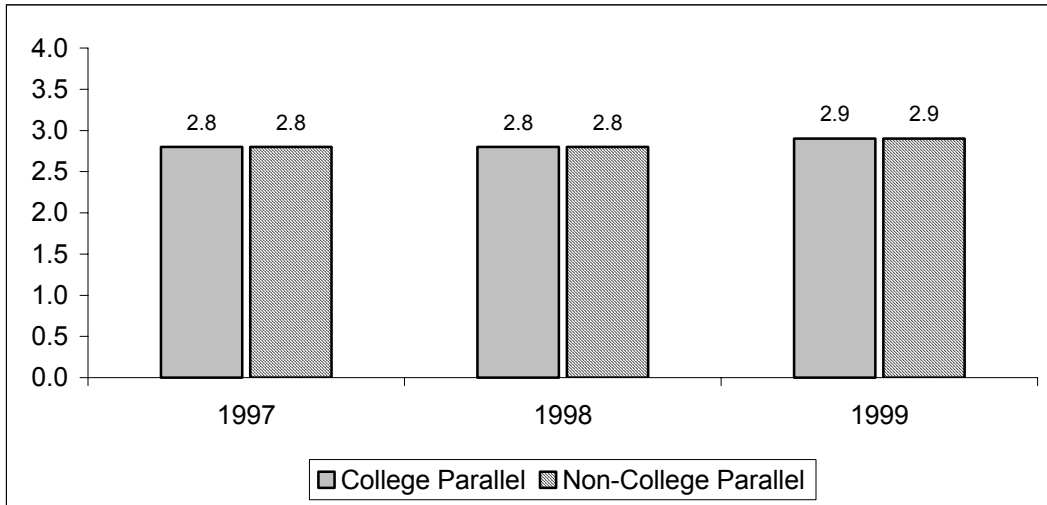
Figure 13
Average First-Semester GPAs of WTCS New Transfers
by Transfer Year and WTCS Enrollment Type



Note: Does not include UW new transfer students who had no match on the WTCS program and course files or students who were dual enrolled.

Figure 14 shows the first-year GPAs of Fall new transfers from WTCS districts by WTCS enrollment type. There are no differences in first-year GPAs between college parallel and non-college parallel transfer students for the past three groups of transfer students. The Fall 1999 new transfer students from the WTCS had an average GPA of 2.9 on a 4.0 scale.

Figure 14
Average First-Year GPAs of WTCS New Transfers
by Transfer Year and WTCS Enrollment Type



Note: Does not include UW new transfer students who had no match on the WTCS program and course files or students who were dual enrolled.

There were not enough years of WTCS program and course data to calculate separate 5th year graduation and 6th year retention rates for college parallel and non-college parallel transfer students. The inclusion of these rates in future years' reports will provide a more complete outcomes section.

CONCLUSIONS

After a decrease in the number of overall transfer students in 1999-00, the number of transfer students to the UW System increased in 2000-01 to the highest number since 1996-97. Following the same pattern, the number of WTCS new transfer students to the UW System increased, after a decrease in 1999-00, to the highest point since 1996-97. The proportion of the UW System's overall transfer population made up of WTCS new transfer students increased to 17.3%, slightly greater than proportions from the past few years. Compared to other new transfer students, new transfer students from the WTCS transfer in fewer credits, are older, and are more likely to enroll on a part-time basis.

Average first-semester GPAs for WTCS new transfer students are comparable to first-semester GPAs for transfer students from private institutions in Wisconsin but slightly below those of all other transfer students. Average first-year GPAs for WTCS new transfer students are slightly below those of other transfer students. The 5th year graduation rates of WTCS transfer students are below those of students who transfer from the UW Colleges and from UW four-year institutions regardless of the number of transfer credits. The 6th year retention rates for sophomore and upperclass WTCS transfer students are generally higher than the rates for other transfer students suggesting that the higher proportion of WTCS transfer students who enroll on a part-time basis may contribute to their longer time to graduation.

The number of WTCS transfer students from non-college parallel programs/courses has more than doubled over the last five years, possibly due to articulation agreements and recent changes in transfer policy. The number of WTCS transfer students from college parallel programs/courses has decreased slightly over the same time period. Compared to non-college parallel students, college parallel students transfer in more credits, are younger, are more likely to enroll on a full-time basis, and are slightly more racially diverse. Compared to non-WTCS transfer students, college parallel students transfer in fewer credits, are older, are more likely to enroll on a part-time basis, and are more racially diverse.

APPENDICES

**Appendix A
WTCS New Transfers to the UW System by WTCS District
1996-97 to 2000-01**

	1996-97		1997-98		1998-99		1999-00		2000-01	
	#	%	#	%	#	%	#	%	#	%
Blackhawk	41	2.1%	45	2.2%	34	1.6%	64	3.0%	56	2.6%
Chippewa Valley	145	7.3%	116	5.6%	147	6.8%	132	6.2%	123	5.8%
Fox Valley	102	5.2%	117	5.6%	156	7.2%	121	5.7%	170	8.0%
Gateway	76	3.9%	107	5.1%	97	4.5%	102	4.8%	138	6.5%
Lakeshore	30	1.5%	33	1.6%	34	1.6%	41	1.9%	43	2.0%
Madison	566	28.7%	543	26.0%	563	25.9%	527	24.8%	556	26.2%
Mid-State	41	2.1%	57	2.7%	56	2.6%	68	3.2%	80	3.8%
Milwaukee	518	26.2%	547	26.2%	480	22.0%	464	21.9%	478	22.5%
Moraine	25	1.3%	32	1.5%	47	2.2%	51	2.4%	51	2.4%
Nicolet	76	3.9%	66	3.2%	55	2.5%	69	3.3%	64	3.0%
Northcentral	50	2.5%	63	3.0%	90	4.1%	77	3.6%	112	5.3%
Northeast WI	80	4.1%	85	4.1%	101	4.6%	105	4.9%	126	5.9%
Southwest	15	0.8%	18	0.9%	22	1.0%	7	0.3%	18	0.8%
Waukesha	65	3.3%	72	3.4%	108	5.0%	87	4.1%	85	4.0%
Western WI	105	5.3%	148	7.1%	144	6.6%	165	7.8%	138	6.5%
WI Indianhead	39	2.0%	40	1.9%	43	2.0%	43	2.0%	52	2.4%
Total	1,974	100.0%	2,089	100.0%	2,177	100.0%	2,123	100.0%	2,290	100.0%

**Appendix B
WTCS New Transfers to the UW System by WTCS District
Annual Percentage Change**

	1999-00 to 2000-01	1996-97 to 2000-01
Blackhawk	-12.5%	36.6%
Chippewa Valley	-6.8%	-15.2%
Fox Valley	40.5%	66.7%
Gateway	35.3%	81.6%
Lakeshore	4.9%	43.3%
Madison	5.5%	-1.8%
Mid-State	17.6%	95.1%
Milwaukee	3.0%	-7.7%
Moraine	0.0%	104.0%
Nicolet	-7.2%	-15.8%
Northcentral	45.5%	124.0%
Northeast WI	20.0%	57.5%
Southwest	157.1%	20.0%
Waukesha	-2.3%	30.8%
Western WI	-16.4%	31.4%
WI Indianhead	20.9%	33.3%
Total	7.9%	16.0%

Appendix C
Undergraduate New Transfers to the UW System by Source
2000-01

From:	Transfers To:														Total
	MSN	MIL	EAU	GBY	LAC	OSH	PKS	PLT	RVF	STP	STO	SUP	WTW	UWC	
Madison		108	30	26	21	29	16	24	9	27	9	7	27	52	385
Milwaukee	107		13	31	12	37	46	10	2	21	9	2	27	86	403
Eau Claire	81	46		21	25	24	3	10	25	39	71	6	15	25	391
Green Bay	37	46	13		10	49	3	9	4	15	4	3	8	31	232
La Crosse	59	72	21	22		26	4	21	5	23	15	2	21	32	323
Oshkosh	35	114	10	40	20		8	15	1	36	10	3	27	104	423
Parkside	24	78	2	5	12	8		1	1	13	2		11	5	162
Platteville	24	29	12	10	17	10			7	15	10		16	30	180
River Falls	8	9	23	7	9	5	2	13		7	23	5	2	23	136
Stevens Point	52	42	42	36	14	52	6	16	6		17	6	11	48	348
Stout	13	18	67	7	11	12		12	20	20		4	8	33	225
Superior	1	3	6	2	4	5		1	6	6	9		1	10	54
Whitewater	67	136	9	19	19	25	23	21	1	8	10			82	420
Extension		1		1				2							4
UW 4-Year Total	508	702	248	227	174	282	111	155	87	230	189	38	174	561	3,686
Baraboo/Sauk	22	10	6		28	10		7	1	7	2	1	5		99
Barron	2	2	32	1	3	1		3	19	2	23	13			101
Fond du Lac	14	19	4	2	1	62		2	1	13			3		121
Fox Valley	19	29	4	25	15	129	1	5	2	20	7		1	2	259
Manitowoc	5	25		42	6	21	1	2		8	1		9	1	121
Marathon	38	7	33	8	20	7		19	7	91	17	1	4		252
Marinette	5	5	2	72		12			1	7	1	1	1		107
Marshfield/Wood	5	3	19	5	15	8		4	10	56	12	1	3		141
Richland	18	3	1	1	20	6		20	1	8	4	1	7		90
Rock	33	12	2	4	4	2	1	2		5	4		47		116
Sheboygan	8	41	2	16	9	29		4	1	5	4		6		125
Washington	18	86	6	6	6	26	3	2	2	13	2		7		177
Waukesha	29	198	5	6	11	13	5	5	6	9	7		27		321
UW Colleges Total	216	440	116	188	138	326	11	75	51	244	84	18	120	3	2,030
Blackhawk	2	2				1		4		2	1		20	24	56
Chippewa Valley		2	42		5				4	2	64			4	123
Fox Valley	1	5		17		48		2	3	9	26		4	55	170
Gateway		15	1		2	1	87	3		3	2	1	18	5	138
Lakeshore	1	2	1	4		1				2	1	1	1	29	43
Madison	242	52	7	8	28	28	2	26	3	27	25	2	64	42	556
Mid-State		4	1	2	1	2	2	3		46	6			13	80
Milwaukee	5	342	1	5	9	10	18	5	2	10	14	1	22	34	478
Moraine		2		1		11		1		2	14		3	17	51
Nicolet	4	2	2	6	1	4		2	1	26	5	4	1	6	64
Northcentral	1	1	3	2	1	11	1	1		18	20	1	3	49	112
Northeast WI		6		67	1	19		2	4	6	8		1	12	126
Southwest	2							9			2			5	18
Waukesha		17			1	1				1	11	1	9	44	85
Western WI	1	3			90	2		6	3	4	21		3	5	138
WI Indianhead		1	3	1					3	1	27	12	1	3	52
WTCS Total	259	456	61	113	139	139	110	64	23	159	247	23	150	347	2,290
Out of State	618	513	258	129	206	156	298	131	337	263	292	284	206	351	4,042
International	45	37	79	6	7	16	11	11	18	9	9	21	6		275
WI Private	102	247	36	69	49	57	37	30	6	54	28	11	52	129	907
Grand Total	1,748	2,395	798	732	713	976	578	466	522	959	849	395	708	1,391	13,230

Appendix D
Undergraduate Re-Entry Transfers to the UW System by Source
2000-01

From:	Transfers To:														Total
	MSN	MIL	EAU	GBY	LAC	OSH	PKS	PLT	RVF	STP	STO	SUP	WTW	UWC	
Madison		18	3	3	5	4	4	1	5	4	2		7	6	62
Milwaukee	19		4	11	2	7	14	3		2			10	18	90
Eau Claire	4	6		2	3	1			3	5	5			9	38
Green Bay	1	7	1			4				2	1	1		15	32
La Crosse	3	6	1	2			3		1	2		1		19	38
Oshkosh	4	10	1	5	2		1	1		4	4		4	21	57
Parkside	1	22			1	2							5	2	33
Platteville	46	4	12	1	1	1	1		1		4		3	4	78
River Falls	1	3		1	2						1	2		5	15
Stevens Point	18	8	7	4		6	2		1		2	1	3	31	83
Stout		1	9						2	2	1		2	6	23
Superior										2	1			1	4
Whitewater	3	10	1	1		1	7	1		2	2			11	39
Extension	2	1	3	3		2			1						12
UW 4-Year Total	102	96	42	33	16	28	32	8	16	24	22	3	34	148	604
Baraboo/Sauk					3	1			1						5
Barron	1		1		1										3
Fond du Lac	1	2				5		1		1					10
Fox Valley	2	3	1	1		17		1			2		1	1	29
Manitowoc	1	1													2
Marathon	1		3	1		1		1		5	1				13
Marinette	1			3						1					5
Marshfield/Wood	1		2			2			1	4					10
Richland								1					1		2
Rock	3	1					1	1			2		7	1	16
Sheboygan		6				3			1	1	1		1		13
Washington	1	7	1		1	1				1			2		14
Waukesha	1	10	1		1	1		1		1			2		18
UW Colleges Total	13	30	9	5	6	31	1	6	3	14	6	0	14	2	140
Blackhawk								1					5	8	14
Chippewa Valley			21						4		11				36
Fox Valley	1			3		19					1			15	39
Gateway		3				1	33			1			4	1	43
Lakeshore				1										3	4
Madison	65	3	1	1	2	5	1	1	2		2	1	12	5	101
Mid-State	1							1		14				1	17
Milwaukee	4	118	2			8	6			5			4	7	154
Moraine						3					1			7	11
Nicolet			2	1				1		1				4	9
Northcentral		1		1		1				2	1			16	22
Northeast WI		1		15		1				1			1	2	21
Southwest								2						1	3
Waukesha	2	3											4	11	20
Western WI					6			1			1				8
WI Indianhead			1						2		1	2			6
WTCS Total	73	129	27	22	8	38	40	7	8	24	18	3	30	81	508
Out of State	200	40	28	21	18	15	30	11	34	18	21	20	13	27	496
International	81	4	1	1	1					2		2			92
WI Private	8	32	3	12	7	5	9		1	5	1	1	5	19	108
Grand Total	477	331	110	94	56	117	112	32	62	87	68	29	96	277	1,948

Appendix E
Student Classification of Fall 2000 WTCS New Transfers to the UW System
by WTCS District

	Freshman		Sophomore		Upperclass		Total	
	#	%	#	%	#	%	#	%
Blackhawk	24	70.6%	4	11.8%	6	17.6%	34	100.0%
Chippewa Valley	37	56.9%	12	18.5%	16	24.6%	65	100.0%
Fox Valley	69	67.6%	16	15.7%	17	16.7%	102	100.0%
Gateway	72	85.7%	9	10.7%	3	3.6%	84	100.0%
Lakeshore	15	65.2%	2	8.7%	6	26.1%	23	100.0%
Madison	127	33.5%	153	40.4%	99	26.1%	379	100.0%
Mid-State	35	83.3%	4	9.5%	3	7.1%	42	100.0%
Milwaukee	125	39.4%	132	41.6%	60	18.9%	317	100.0%
Moraine	21	70.0%	8	26.7%	1	3.3%	30	100.0%
Nicolet	18	39.1%	18	39.1%	10	21.7%	46	100.0%
Northcentral	53	73.6%	10	13.9%	9	12.5%	72	100.0%
Northeast WI	48	71.6%	13	19.4%	6	9.0%	67	100.0%
Southwest	9	81.8%	0	0.0%	2	18.2%	11	100.0%
Waukesha	38	71.7%	10	18.9%	5	9.4%	53	100.0%
Western WI	44	67.7%	10	15.4%	11	16.9%	65	100.0%
WI Indianhead	19	52.8%	10	27.8%	7	19.4%	36	100.0%
Total	754	52.9%	411	28.8%	261	18.3%	1,426	100.0%

Appendix F
Full-Time/Part-Time Status of Fall 2000 WTCS New Transfers to the UW System
by WTCS District

	Full-Time		Part-Time		Total	
	#	%	#	%	#	%
Blackhawk	15	44.1%	19	55.9%	34	100.0%
Chippewa Valley	46	70.8%	19	29.2%	65	100.0%
Fox Valley	51	50.0%	51	50.0%	102	100.0%
Gateway	53	63.1%	31	36.9%	84	100.0%
Lakeshore	7	30.4%	16	69.6%	23	100.0%
Madison	306	80.7%	73	19.3%	379	100.0%
Mid-State	32	76.2%	10	23.8%	42	100.0%
Milwaukee	189	59.6%	128	40.4%	317	100.0%
Moraine	19	63.3%	11	36.7%	30	100.0%
Nicolet	37	80.4%	9	19.6%	46	100.0%
Northcentral	48	66.7%	24	33.3%	72	100.0%
Northeast WI	41	61.2%	26	38.8%	67	100.0%
Southwest	9	81.8%	2	18.2%	11	100.0%
Waukesha	36	67.9%	17	32.1%	53	100.0%
Western WI	54	83.1%	11	16.9%	65	100.0%
WI Indianhead	31	86.1%	5	13.9%	36	100.0%
Total	974	68.3%	452	31.7%	1,426	100.0%

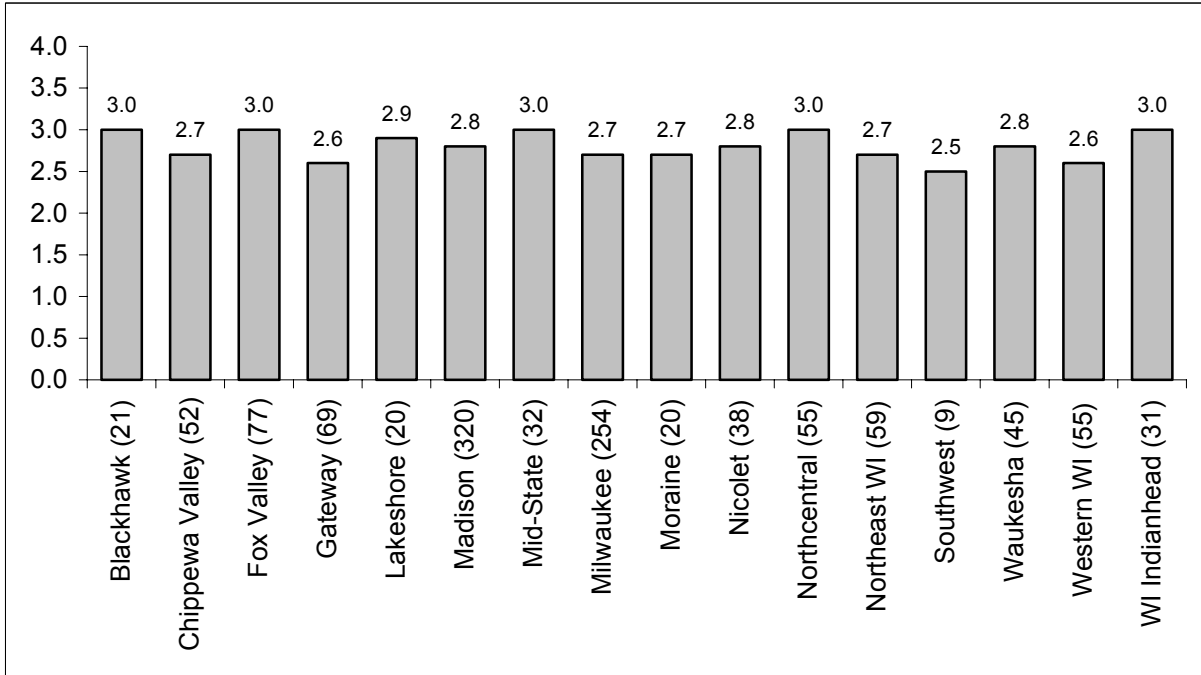
Appendix G
Age Distribution of Fall 2000 WTCS New Transfers to the UW System
by WTCS District

	Under 20		20-24		25 and Over		Total	
	#	%	#	%	#	%	#	%
Blackhawk	3	8.8%	14	41.2%	17	50.0%	34	100.0%
Chippewa Valley	9	13.8%	36	55.4%	20	30.8%	65	100.0%
Fox Valley	6	5.9%	52	51.0%	44	43.1%	102	100.0%
Gateway	8	9.5%	38	45.2%	38	45.2%	84	100.0%
Lakeshore	3	13.0%	7	30.4%	13	56.5%	23	100.0%
Madison	54	14.2%	222	58.6%	103	27.2%	379	100.0%
Mid-State	3	7.1%	27	64.3%	12	28.6%	42	100.0%
Milwaukee	35	11.0%	166	52.4%	116	36.6%	317	100.0%
Moraine	4	13.3%	16	53.3%	10	33.3%	30	100.0%
Nicolet	12	26.1%	24	52.2%	10	21.7%	46	100.0%
Northcentral	8	11.1%	43	59.7%	21	29.2%	72	100.0%
Northeast WI	10	14.9%	40	59.7%	17	25.4%	67	100.0%
Southwest	0	0.0%	8	72.7%	3	27.3%	11	100.0%
Waukesha	12	22.6%	28	52.8%	13	24.5%	53	100.0%
Western WI	15	23.1%	36	55.4%	14	21.5%	65	100.0%
WI Indianhead	10	27.8%	15	41.7%	11	30.6%	36	100.0%
Total	192	13.5%	772	54.1%	462	32.4%	1,426	100.0%

Appendix H
Race/Ethnicity of Fall 2000 WTCS New Transfers to the UW System
by WTCS District

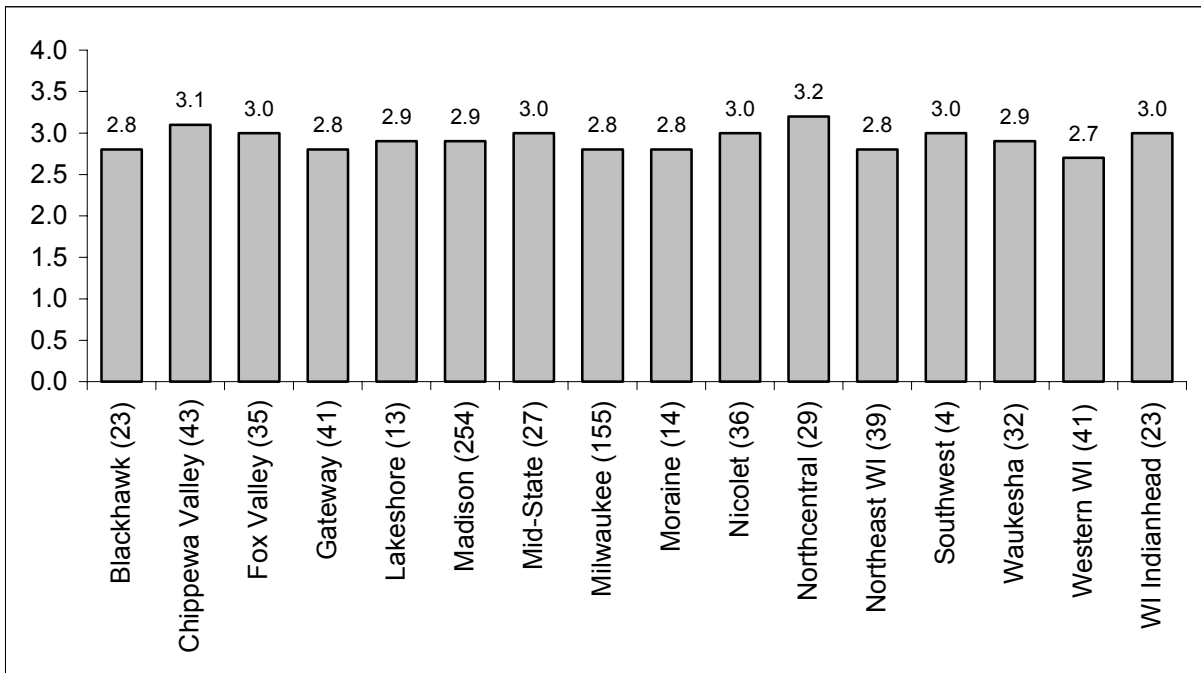
	White		Students of Color		Total	
	#	%	#	%	#	%
Blackhawk	32	94.1%	2	5.9%	34	100.0%
Chippewa Valley	61	93.8%	4	6.2%	65	100.0%
Fox Valley	100	98.0%	2	2.0%	102	100.0%
Gateway	69	82.1%	15	17.9%	84	100.0%
Lakeshore	20	87.0%	3	13.0%	23	100.0%
Madison	339	89.4%	40	10.6%	379	100.0%
Mid-State	41	97.6%	1	2.4%	42	100.0%
Milwaukee	235	74.1%	82	25.9%	317	100.0%
Moraine	28	93.3%	2	6.7%	30	100.0%
Nicolet	44	95.7%	2	4.3%	46	100.0%
Northcentral	71	98.6%	1	1.4%	72	100.0%
Northeast WI	65	97.0%	2	3.0%	67	100.0%
Southwest	11	100.0%	0	0.0%	11	100.0%
Waukesha	50	94.3%	3	5.7%	53	100.0%
Western WI	61	93.8%	4	6.2%	65	100.0%
WI Indianhead	36	100.0%	0	0.0%	36	100.0%
Total	1,263	88.6%	163	11.4%	1,426	100.0%

Appendix I
Average First-Semester GPAs of Fall 2000 WTCS New Transfers to the UW System
by WTCS District



Note: Figures in parentheses following the district name indicate the number of students used in the calculation of average GPA.

Appendix J
Average First-Year GPAs of Fall 1999 WTCS New Transfers to the UW System
by WTCS District



Note: Figures in parentheses following the district name indicate the number of students used in the calculation of average GPA.

Appendix K
UW System New Transfer Students from WTCS Districts
by Transfer Year and WTCS Enrollment Type

	College Parallel		Non-College Parallel		Dual Enrolled		No Match	Total
	Program	Courses	Program	Courses	CP	Non-CP		
2000-01	532	82	985	250	---	---	391	2,240
1999-00	493	90	880	207	49	159	216	2,094
1998-99	531	65	849	215	67	129	281	2,137
1997-98	564	54	672	171	67	119	400	2,047
1996-97	568	81	478	98	69	109	546	1,949

END NOTES

¹ Academic year is defined as the summer and following fall, winter, and spring terms.

² Type of sending institution is based on the last institution attended by a student prior to transfer. For example, a student who earned credits at one of the UW Colleges, transferred to a WTCS district and then transferred back into a UW institution would be classified as a WTCS transfer student.

³ Intra-UW System transfers are transfers among UW four-year institutions, transfers from UW Colleges to UW four-year institutions, and transfers from UW four-year institutions to UW Colleges.

⁴ Student classification is based on the total number of degree credits which may have been accumulated from more than one transfer institution. While credit ranges differ among UW institutions, in general, freshman students have 0-29 degree credits, sophomore students between 30 and 59 credits, juniors between 60 and 89 credits, and seniors have 90 or more credits. The classifications used for this report are those provided by the UW institutions.

⁵ Part-time status for undergraduates is defined as fewer than twelve (12) credits.

⁶ The 5th year graduation rate is the percentage of students who received a Bachelor's degree by the end of the 5th year after transfer.

⁷ The 6th year retention rate is the percentage of students who had not received a Bachelor's degree but were still enrolled in the fall of the 6th year after transfer.

⁸ College parallel students were defined as students who were most recently enrolled in a college parallel program (rather than in an associate (occupational), technical or certificate program) or who most recently took college parallel courses (rather than associate, technical or certificate courses). Non-college parallel students were defined as students who were most recently enrolled in an associate (occupational), technical or certificate program or who most recently took associate (occupational), technical or certificate courses. UW System new transfer students who were enrolled in both UW and WTCS districts in the same year (dual enrolled) were excluded from the demographic and outcome analyses.

⁹ Annual transfer numbers in other sections of this report count all transfer "acts". For example, a student who transferred twice during the same year is counted twice, once at each receiving institution. A transfer student who is enrolled at more than one UW institution in the same semester is also counted twice, once at each receiving institution. For the college parallel section, an unduplicated headcount of students is used; therefore, the annual number of new transfer students from WTCS districts (2,290 for 2000-01) will not match the numbers in Table 1 (2,250). For 2000-01, 40 students either transferred more than once or were enrolled at more than one UW institution.