



Wisconsin Technical College System (WTCS) to
the University of Wisconsin System (UWS)
Program Assessment Study

December 2007

Prepared by:
The University of Wisconsin System
Office of Policy Analysis and Research
1534 Van Hise Hall
1220 Linden Drive
Madison, WI 53706
608.262.6441
OPAR@uwsa.edu
<http://www.uwsa.edu/opar>

Table of Contents

Introduction	2
Background.....	2
Data Sharing.....	2
Establishment of a Cohort	2
WTCS/UWS Enrollment	3
Student Characteristics by WTCS Program Type	4
WTCS Degree Completion Status.....	5
Initial UWS Student Classification	5
Initial UWS Entrance Status	6
Initial UWS Full-Time/Part-Time Status.....	6
Initial UWS Age Range.....	7
Student Race/Ethnicity	7
Student Outcomes.....	8
Second Year Retention Rate.....	8
First Year GPA.....	8
Linking WTCS Programs to UWS Majors.....	9
Program-Specific Enrollments and Assessment	10
Nursing.....	10
Early Childhood Education	13
Information Technology (IT).....	16
Marketing	19
Criminal Justice.....	22
Accounting	25
Engineering Technology	27
Liberal Arts.....	30
Summary	32
Appendices	33
End Notes	49

INTRODUCTION

Background

Over the last eleven years, the number of program-to-program transfer articulation agreements between the Wisconsin Technical College System (WTCS) and the University of Wisconsin System (UWS) has continued to grow. Currently, there are over 500 articulation agreements, which allow students to transfer courses from a specific program at a WTCS district into a similar program at a UW institution and complete a bachelor's degree. The agreements provide transfer opportunities for students in applied associate degree programs beyond the standard transfer of general education courses¹. In 2000, new "systemwide" agreements were developed in the areas of nursing and early childhood education. The new agreements are aimed toward a 2+2 model where the WTCS transfer students enter the UWS program with or close to junior standing.

In fall 2000, the Joint Administration Committee on Academic Programs (JACAP) established a joint working group to design an appropriate reporting mechanism for program assessment and improvement. The group's primary goals were: (1) track students who were enrolled at the WTCS and subsequently enrolled at the UWS and identify both their originating WTCS program and subsequent UWS major; (2) identify potential program areas for developing new transfer articulation agreements; and (3) assess the academic outcomes of these students, including retention and graduation. The working group's initial report in 2001 provided a baseline for the assessment of both current and new agreements. This fifth report continues and expands the WTCS programs assessed in the 2001, 2002, 2003, and 2006 reports.

Data Sharing

In March 2001, a Data Exchange Memorandum of Understanding between the WTCS Board and the UWS Board of Regents was developed. The agreement allowed for the exchange of student and other records necessary for the evaluation of student transfers from the WTCS to the UWS and the evaluation of WTCS/UWS transfer articulation agreements and assessment of student outcomes of participants. The data exchange set a model for cooperation between the Systems and was key to the joint study.

To date, the WTCS has provided the UWS with records for students who were enrolled in applied associate degree, liberal arts, and/or technical diploma courses at WTCS districts in fiscal years 1994-95 through 2004-05. The data included demographic, program, and course records for each student. The WTCS data was matched to the UWS enrollment database to track the students through their UWS experience.

Establishment of a Cohort

Two factors determine a student's inclusion in the WTCS/UWS Assessment Study. First, the student must have initially enrolled at a WTCS district. Second, the student must have concurrently or subsequently enrolled at a UW campus. Students' assignment to a specific cohort was based on their last year at the specific technical college and their initial year of UWS enrollment. For example, a student, who attended MATC-Madison in calendar years 1994 and 1995 and then enrolled at UW-Madison in fall 1996, would have a "Last WTCS Year" of 1995-96 and be in the 1996-97 UWS cohort. For additional information about the cohort formation, refer to the technical notes².

WTCS/UWS ENROLLMENT

The 2007 Program Assessment Study reports on 49,181 students who attended a WTCS district in fiscal years 1994-95 through 2004-05 and concurrently or subsequently enrolled at a UW institution. Overall, the majority of students initially enrolled at a UW institution in the year directly following their last WTCS year. Some students enrolled in the WTCS and UWS in the same academic year, either during the same term or at a WTCS district one term and at a UW campus the following term, while a large group of WTCS students delayed their UWS enrollment for a year or more. For example, of the 4,386 students who were last enrolled in the WTCS in 1995-96 and concurrently or later enrolled in a UW institution, 1,823 (42%) students initially enrolled at a UW institution in 1996-97, 631 (14%) were enrolled in both Systems in 1995-96, and 1,932 (44%) waited more than one year before enrollment in the UWS (Table 1). Appendix A shows UWS enrollment for the overall cohort by WTCS district and initial UWS enrollment year.

Table 1
WTCS/UWS Assessment Cohorts
by Last WTCS and Initial UWS Enrollment Years

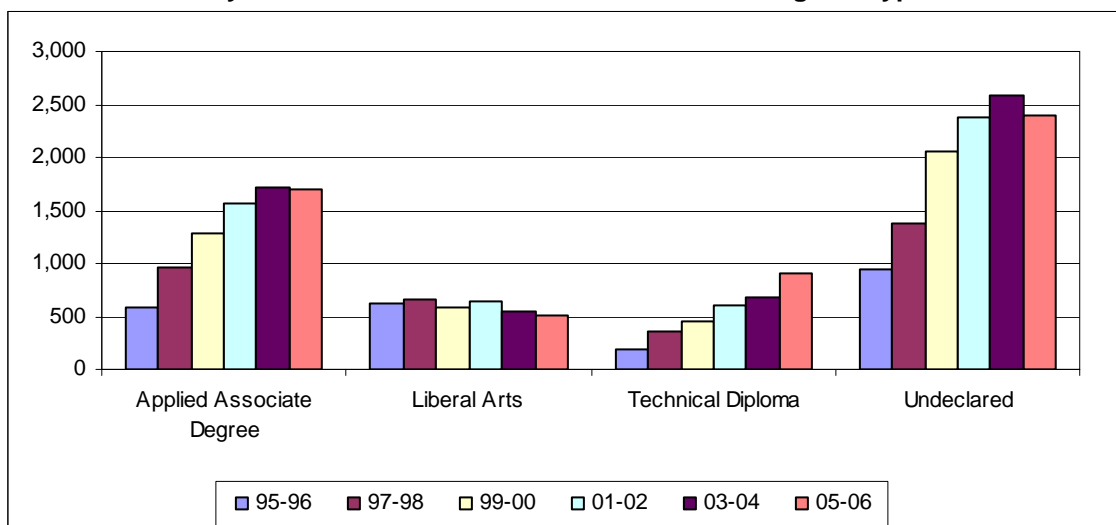
Last WTCS Year	UWS Cohort Year											Total
	95-96	96-97	97-98	98-99	99-00	00-01	01-02	02-03	03-04	04-05	05-06	
1994-95	1,697	571	323	268	195	159	130	92	86	56	59	3,636
1995-96	631	1,823	603	342	267	205	179	101	95	79	61	4,386
1996-97		651	1,752	623	365	285	213	167	110	81	85	4,332
1997-98			684	2,059	676	364	295	192	124	131	81	4,606
1998-99				768	2,143	800	425	273	179	140	100	4,828
1999-00					733	2,136	726	361	274	169	165	4,564
2000-01						721	2,369	757	346	253	174	4,620
2001-02							832	2,418	784	375	252	4,661
2002-03								908	2,670	882	354	4,814
2003-04									865	2,756	931	4,552
2004-05										922	3,260	4,182
Total	2,328	3,045	3,362	4,060	4,379	4,670	5,169	5,269	5,533	5,844	5,522	49,181

STUDENT CHARACTERISTICS BY WTCS PROGRAM TYPE

The number of students who were enrolled in a WTCS applied associate degree program and then came to a UW has increased significantly over the last 11 years, from 580 in 1995-96 to 1,700 in 2005-06 (Figure 1). There has also been an increase in students who enrolled in WTCS technical diploma programs and concurrently or subsequently enrolled in the UW, from 188 in 1995-96 to 913 in 2005-06. In contrast, the number of students from liberal arts programs offered at Madison, Milwaukee, and Nicolet Area Technical Colleges has decreased slightly with fluctuation, from 617 in 1995-96 to 518 in 2005-06. The largest increased group of WTCS students, who later attend a UW institution, were not enrolled in a specific WTCS program, from 943 in 1995-96 to 2,391 in 2005-06. Possibly, these undeclared students attended the WTCS to take only one or two courses.

Of the 5,977 WTCS technical diploma students in the cohort, the majority (72%) were enrolled in WTCS Health-Related Professions, 13 percent were enrolled in Trades/Technical program group, and the remaining (15%) were in other WTCS program groups.

Figure 1
WTCS/UWS Assessment Cohorts
by Initial UWS Enrollment Year and WTCS Program Type



From 1995-96 to 2005-06, the percentage of the cohort enrolled in WTCS associate degree programs increased from 25 percent to 31 percent and the proportion of the cohort enrolled in technical diploma programs grew from 8 percent to 17 percent. In contrast, the share of WTCS liberal arts students in the cohort declined from 27 percent in 1995-96 to 9 percent in 2005-06 (Table 2).

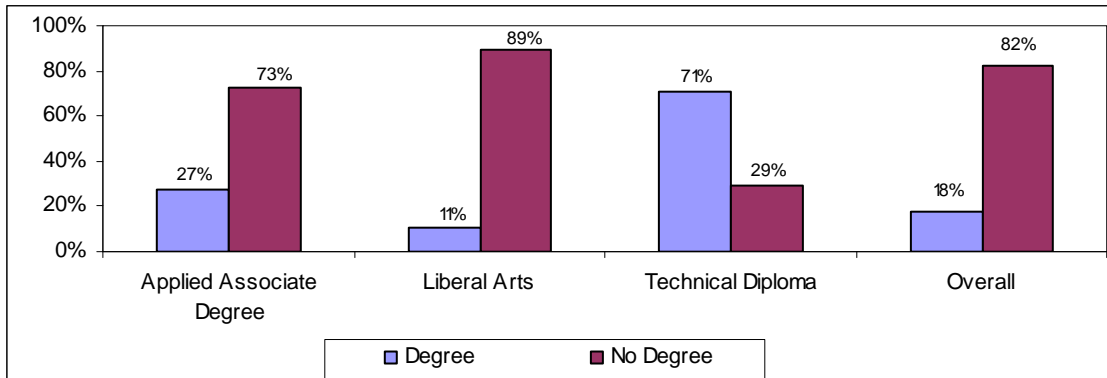
Table 2
WTCS/UWS Assessment Cohorts
by Initial UWS Enrollment Year and WTCS Program Type

Program Type	UWS Cohort Year						Overall
	95-96	97-98	99-00	01-02	03-04	05-06	
Applied Associate Degree	25%	28%	29%	30%	31%	31%	29%
Liberal Arts	27%	20%	13%	12%	10%	9%	13%
Technical Diploma	8%	11%	11%	12%	12%	17%	12%
Undeclared	41%	41%	47%	46%	47%	43%	45%
Total	100%	100%	100%	100%	100%	100%	100%

WTCS Degree Completion Status

Of the WTCS students enrolled in applied associate degree programs who later attended a UW institution, 27 percent of the students earned a WTCS applied associate degree. Only 11 percent of the WTCS liberal arts students earned the WTCS Associate in Arts or Science Degree prior to enrolling at a UW. In contrast, 71 percent of the technical diploma students completed their program before their UWS enrollment. Appendix B shows UWS enrollment for the overall cohort by the UWS initial enrollment year, WTCS program type, and WTCS degree completion status.

Figure 2
WTCS/UWS Assessment Cohorts - Overall
by WTCS Program Type and WTCS Degree Completion Status

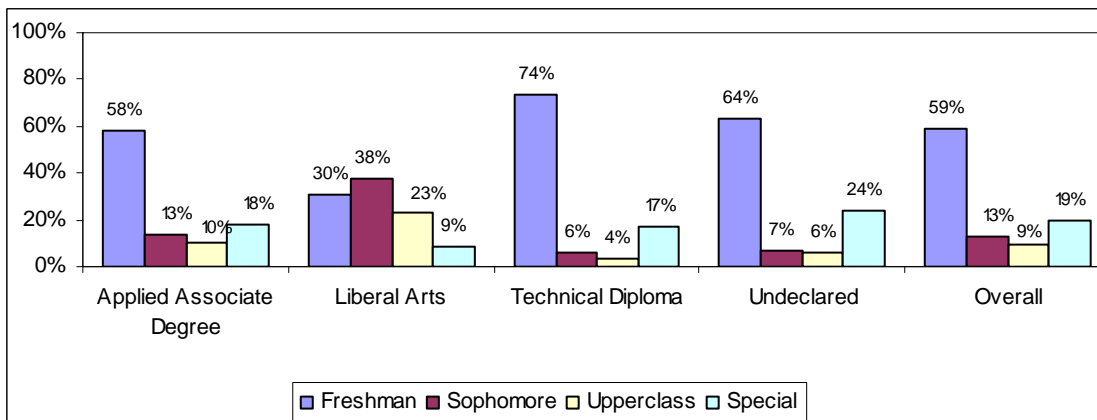


Overall includes students who were not enrolled in a specific WTCS program.

Initial UWS Student Classification

The majority of WTCS students who were enrolled in applied associate degree programs (58%) and technical diplomas (74%) entered the UWS as freshmen, compared to 30 percent in WTCS liberal arts programs. For students who were not enrolled in a specific WTCS program, the percentage was 64 percent. Overall, 19 percent of the WTCS students in the cohort entered the UWS as special (non degree-seeking) students. While many special students enroll only to take a few classes, some of them may later enroll in degree programs and graduate. Appendix C presents the detailed information by initial UWS enrollment year and student classification.

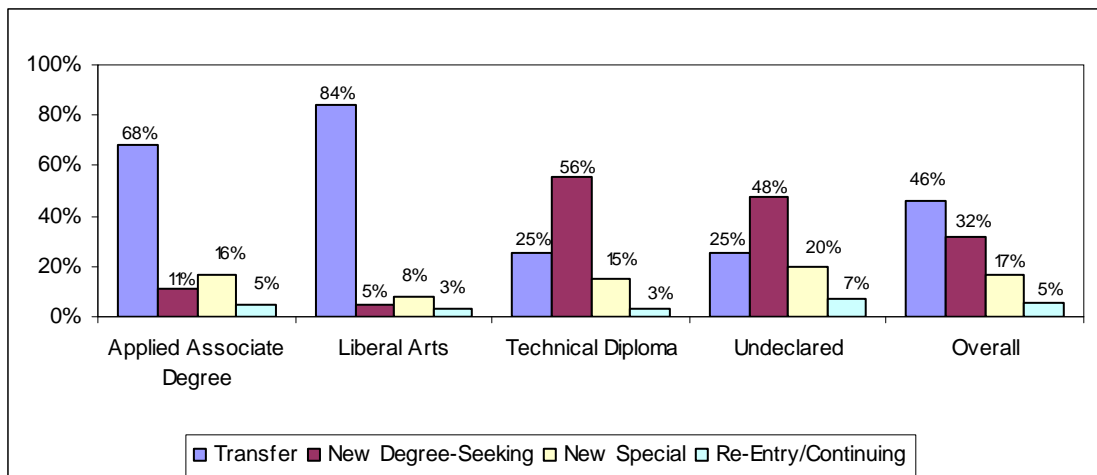
Figure 3
WTCS/UWS Assessment Cohorts - Overall
by WTCS Program Type and Initial UWS Student Classification



Initial UWS Entrance Status

Almost half of the students (46% overall), coming to the UWS after attending a WTCS district, entered as transfer students (Figure 4), that is, they notified the UW institution of their prior coursework and the transfer work was evaluated. Almost one third of the students in the cohort were new, degree-seeking students. Often, these students receive credit for their prior coursework later in their UW enrollment. Since students who enroll as specials are not degree-seeking, their prior coursework is usually not evaluated. “Re-entry” students re-enrolled at the UW with no transfer work. “Continuing” students were enrolled at both a WTCS and UW institution during the same year. The proportion of WTCS students entering the UWS as transfer students varied by WTCS program type, from 25 percent to 84 percent. Appendix D shows enrollment of the overall cohort by entrance status and UW institution.

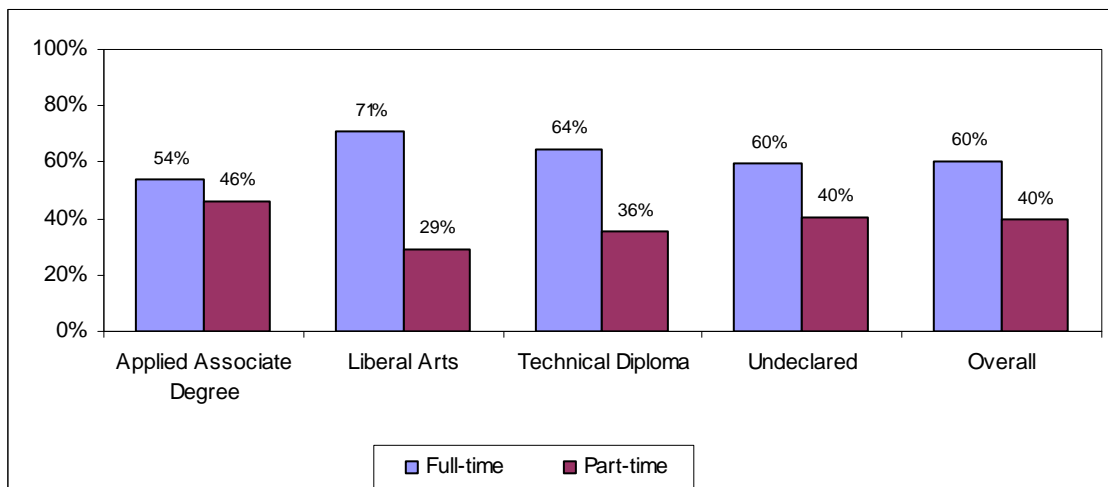
Figure 4
WTCS/UWS Assessment Cohorts - Overall
by WTCS Program Type and Initial UWS Entrance Status



Initial UWS Full-Time/Part-Time Status

Students who were previously enrolled in WTCS liberal arts programs were more likely to attend the UWS as full-time students (71%). Overall, 60 percent of the WTCS students came to the UWS as full-time students.

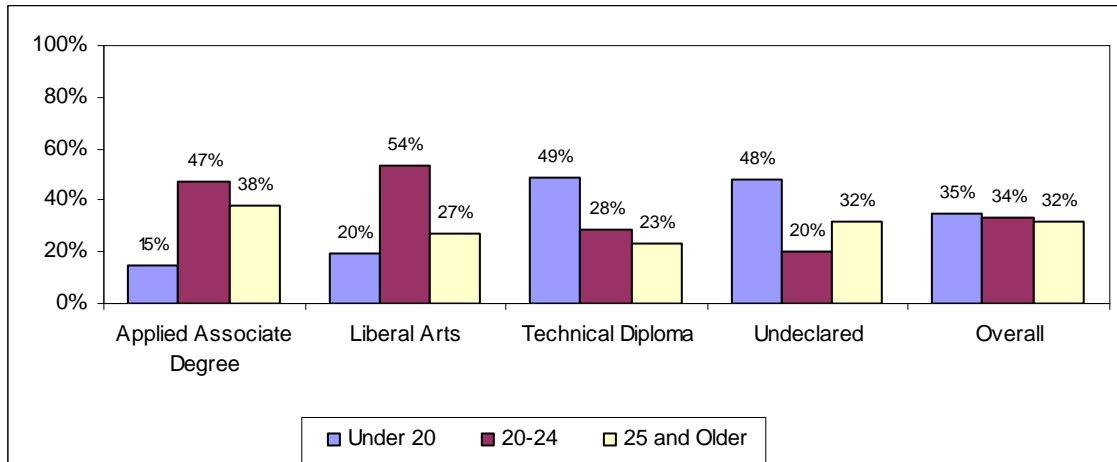
Figure 5
WTCS/UWS Assessment Cohorts - Overall
by WTCS Program Type and Initial UWS Full-Time/Part-Time Status



Initial UWS Age Range

The age distribution of students who were enrolled in the WTCS and later attended the UWS differed by WTCS program type. About half of the students who were enrolled in liberal arts programs or applied associate degree programs were between 20 and 24 years old. Almost half of the students enrolled in technical diploma programs and those not enrolled in any specific WTCS program were under 20 years old.

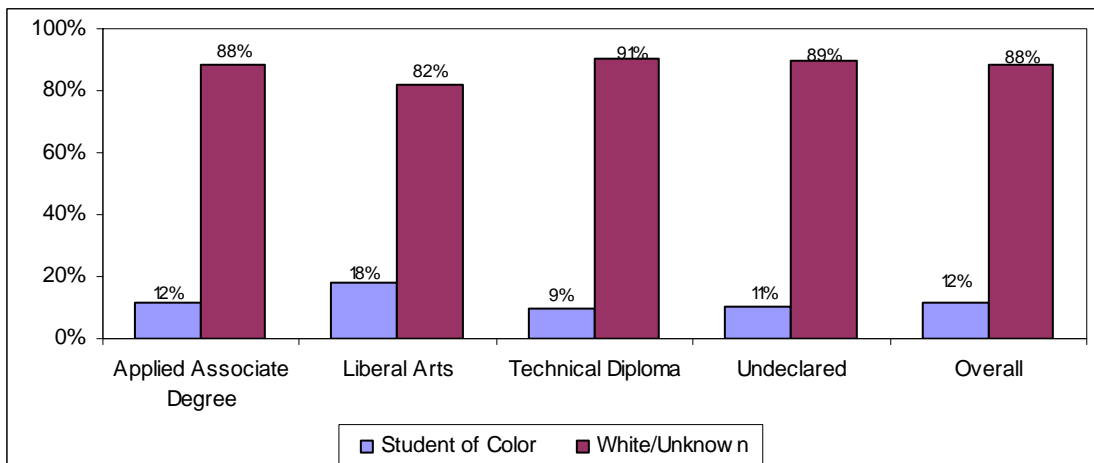
**Figure 6
WTCS/UWS Assessment Cohorts - Overall
by WTCS Program Type and Initial UWS Age Range**



Student Race/Ethnicity

Overall, 12 percent of the students in the cohort were students of color, ranging from 9 percent in technical diploma programs to 18 percent in liberal arts programs. This indicates that student transfer from the WTCS, particularly from WTCS liberal arts programs, may increase student diversity at the UWS.

**Figure 7
WTCS/UWS Assessment Cohorts - Overall
by WTCS Program Type and Race/Ethnicity**

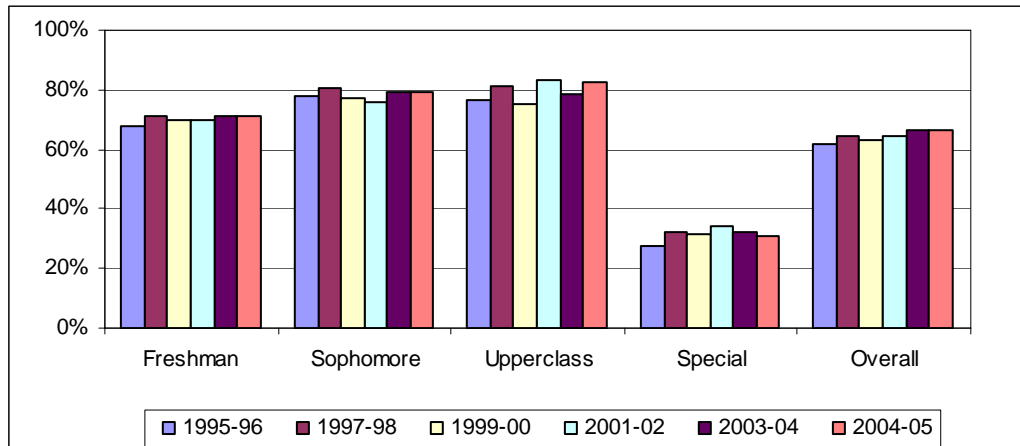


STUDENT OUTCOMES

Second Year Retention Rate

Students who entered the UWS as sophomores and upperclassmen had similar second year retention rates³, higher than for those who entered as freshmen (Figure 8). Of the students who initially enrolled in the UWS in 2004-05 as sophomores or as upperclassmen, their second year retention rates were 78 percent and 80 percent, respectively, compared to 71 percent for freshmen. Special students were retained at lower rates, consistent with their differing academic goals. See Appendix E for details.

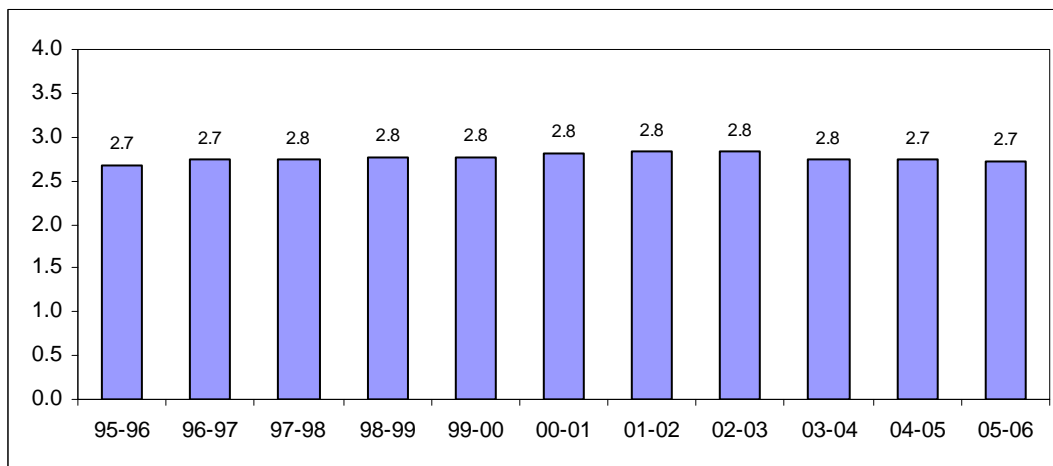
Figure 8
Second Year Retention for WTCS/UWS Assessment Cohorts
by Initial UWS Enrollment Year and Classification



First Year GPA

Figure 9 shows the average first year GPA for students in the assessment study who enrolled in the UWS between 1995-96 and 2005-06. The average first year GPA was steady at 2.8 on a 4.0 scale. See Appendix H for details.

Figure 9
Average First Year GPA for WTCS/UWS Assessment Cohorts
by Initial UWS Enrollment Year



LINKING WTCS PROGRAMS TO UWS MAJORS

As a first step toward studying program-to-program activity, WTCS programs and UWS majors were linked using a common classification system (based on CIP discipline areas)⁴. The student's last declared program at the WTCS district and the student's first declared major at the UW institution were linked to their corresponding program/major groups. Table 3 shows the results of this program/major linking. Specifically, the table shows, for a given WTCS program group (leftmost column), the number of students in the overall cohort who enrolled at a UW institution and the types of majors that they entered (reading across the columns). It also shows, the number of students in the cohort who enrolled in a given UWS major group (reading down a column). Lastly, the intersections of WTCS program and UWS major groups show areas where students are enrolling in similar disciplines. For example, 410 students in the cohort had enrolled in Agriculture & Natural Resources programs at the WTCS, 683 students in the cohort enrolled in Agriculture & Natural Resources majors at the UWS, and 89 students were enrolled in an Agriculture & Natural Resources program while at the WTCS and enrolled in a major in the same area when they came to the UWS.

The WTCS program group with the largest number of students was Humanities/Liberal Arts with 6,799 students (14% of the overall cohort). The Humanities/Liberal Arts group consists primarily of students enrolled in liberal arts programs at Madison, Milwaukee, and Nicolet Area Technical Colleges (97%).

At many UW institutions, students are not required to declare a major until they reach junior or senior standing. This may partially account for the large number of UWS students with no declared major. Areas of significant program/major intersection included Health Professions to Health Professions with 1,333 students and Business to Business with 1,213 students. These program/major intersections show areas where current WTCS/UWS articulation agreements exist as well as areas where new agreements could be developed.

Table 3
WTCS/UWS Assessment Cohort - Overall
by WTCS Program and UWS Major Groups

WTCS Program Group	UWS Major Group													Total
	Ag (01)	Bio (02)	Bus (03)	Com (04)	Ed (05)	Engin (06)	Hlth (07)	H Ec (08)	Hum (09)	Math/CS (10)	Pub Adm (11)	Soc Sci (12)	Und (14)	
Ag & Natural Resources (01)	89	21	24	6	32	7	5		10	4	5	11	196	410
Biological/Physical Sci (02)	1	23	7		3	5	4		3	3		4	21	74
Business (03)	38	87	1,213	202	389	24	126	25	161	72	89	306	1,993	4,725
Communications/Arts (04)	4	10	49	277	66	14	21		34	13	13	43	407	951
Education (05)		1	4	11	166	2	15	7	15	2	13	21	257	514
Engineering & Architecture (06)	20	31	193	36	92	252	27	1	28	74	10	40	863	1,667
Health-Related Professions (07)	26	432	220	109	351	25	1,333	32	137	40	186	283	3,944	7,118
Home Econ/Personal Serv (08)	3	4	59	17	68	1	13	6	14	4	5	12	282	488
Humanities/Liberal Arts (09)	163	276	725	569	748	237	398	83	391	171	265	688	2,085	6,799
Math, Computer & Info Sciences (10)	6	32	184	65	58	19	37	2	57	247	23	71	751	1,552
Public Admin/Legal Services (11)	17	33	130	49	104	10	70	7	80	16	217	209	884	1,826
Social Science (12)			1		2				1			2	1	7
Trades/Tech (13)	15	21	103	31	88	62	16	1	20	23	11	27	508	926
Undeclared (14)	301	852	2,033	1,127	1,390	565	1,145	93	835	540	540	1,210	11,493	22,124
Total	683	1,823	4,945	2,499	3,557	1,223	3,210	257	1,786	1,209	1,377	2,927	23,685	49,181

PROGRAM-SPECIFIC ENROLLMENTS AND ASSESSMENT

The remaining sections of the report analyze groups of students in the overall cohort who were enrolled in specific programs at the WTCS and then entered specific majors or major groups at a UW institution⁵. These WTCS programs were selected for this year's report for a variety of reasons. The nursing and early childhood education programs were selected because of multi-campus transfer agreements for these programs. Criminal Justice appeared to be an emerging area with a few new transfer agreements and potential for future growth. The information technology (IT) and marketing programs were selected because a large number of students in the cohort were enrolled in these programs. Similarly, accounting, engineering technology, and liberal arts programs were added in the 2007 report due to a large number of students in the cohort enrolling in these programs.

Nursing

The 2007 assessment study included 1,331 students who last enrolled in the WTCS nursing applied associate degree program between 1994-95 and 2004-05 and subsequently enrolled at a UW institution (Table 4). Since 1994-95, the overall trend indicates an increase in the number of WTCS nursing students continuing their education in the UWS. Similar to the trend shown for the overall cohort (Table 1), a large portion of nursing students came to the UWS in the year following their WTCS enrollment. However, for some students, there was a considerable gap between their last WTCS year and initial UWS enrollment year. Of the 121 nursing students who last enrolled in the WTCS in 1995-96, 45 students (37%) enrolled in the UWS in 1996-97, 10 students (8%) were concurrently enrolled, and 66 students (55%) waited at least one year before their UWS enrollment. Refer to Appendix I for enrollment of students in WTCS nursing applied associate degree programs by WTCS district and UWS institution. Appendix J summarizes WTCS/UWS transfer agreements for WTCS nursing applied associate degree programs.

Table 4
WTCS/UWS Assessment Cohorts
WTCS Nursing Applied Associate Degree Students
by Last WTCS and Initial UWS Enrollment Years

Last WTCS Year	UWS Cohort Year											Total
	95-96	96-97	97-98	98-99	99-00	00-01	01-02	02-03	03-04	04-05	05-06	
94-95	26	15	13	10	3	8	8	2	3	2	1	91
95-96	10	45	14	4	5	16	10	4	6	4	3	121
96-97		30	43	9	13	11	8	8	7	5	4	138
97-98			13	44	9	13	13	11	4	11	5	123
98-99				18	41	22	12	10	3	4	6	116
99-00					21	40	19	8	9	6	8	111
00-01						13	37	10	11	8	6	85
01-02							16	56	22	15	13	122
02-03								51	72	18	11	152
03-04									29	63	16	108
04-05										41	123	164
Total	36	90	83	85	92	123	123	160	166	177	196	1,331

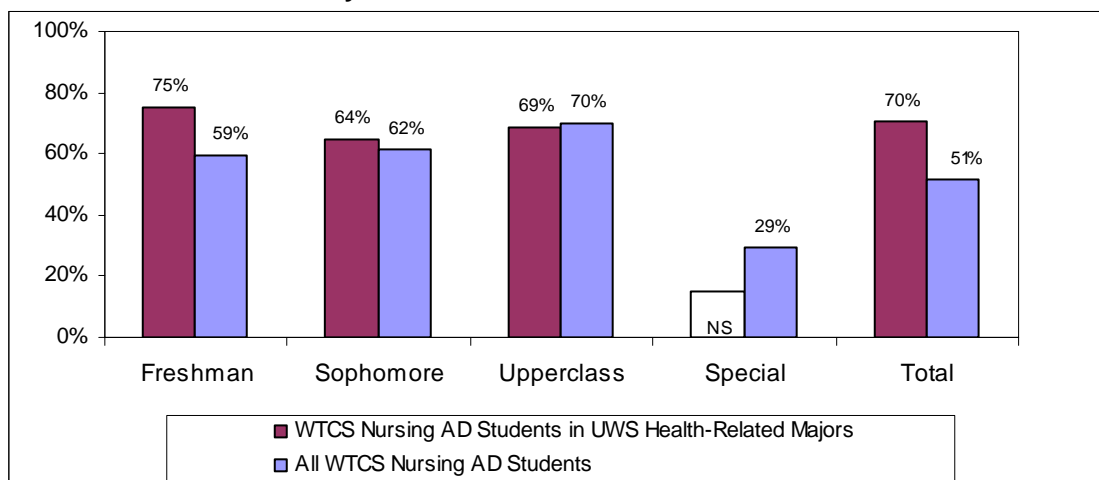
Table 5 shows the type of UWS majors chosen by WTCS nursing students. While the majority of WTCS nursing students in the cohort entered Health-Related Professions, they also pursued majors in Biological/Physical Science and Education areas. Some of the WTCS nursing students in the undeclared group may be seeking a UWS nursing degree but had not yet been admitted to the UWS nursing major.

Table 5
WTCS/UWS Assessment Cohorts
WTCS Nursing Applied Associate Degree Students
by UWS Major Group

UWS Major Group	# of Students	% of Total	% of Sub-Total
Ag & Nat Resources (01)	2	0%	0%
Biological/Physical Sciences (02)	39	3%	6%
Business (03)	23	2%	4%
Communications/Arts (04)	11	1%	2%
Education (05)	37	3%	6%
Engineering & Architecture (06)	2	0%	0%
Health-Related Professions (07)	418	31%	69%
Home Economics/Personal Services (08)	4	0%	1%
Humanities/Liberal Arts (09)	20	2%	3%
Math, Computer & Info Sciences (10)	3	0%	0%
Public Admin/Legal Services (11)	13	1%	2%
Social Sciences (12)	30	2%	5%
Sub-Total	602	45%	100%
Undeclared (14)	729	55%	
Total	1,331	100%	

Within the overall assessment cohort, WTCS nursing students who had declared a UWS major in Health-Related Professions had a second year retention rate of 70 percent, compared to 51 percent for WTCS nursing students as a group (Figure 10). See Appendix F for details.

Figure 10
Second Year Retention for WTCS/UWS Assessment Cohorts
WTCS Nursing Applied Associate Degree Students
by Initial UWS Student Classification

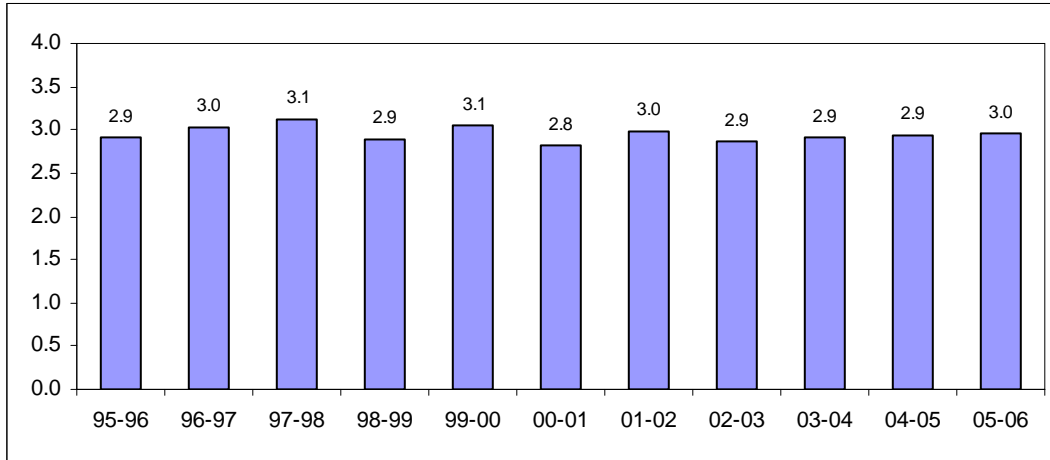


NS – not shown due to small cohort size.

Within the assessment cohorts who enrolled in the UWS from 1995-96 to 2000-01 as degree-seeking students, WTCS nursing students who had declared a UWS major in Health-Related Professions had a six-year graduation rate of 37 percent, compared to 21 percent for WTCS nursing students as a group. See Appendix G for details.

The average first year GPA for WTCS nursing students ranged from 2.8 for students who enrolled in the UWS in 2000-01 to 3.1 for those who enrolled in 1997-98 or 1999-00 (Figure 11). In general, WTCS nursing students had a slightly higher average first year GPA than students in the overall assessment study. See Appendix H for details.

Figure 11
Average First Year GPA for WTCS/UWS Assessment Cohorts
WTCS Nursing Applied Associate Degree Students
by Initial UWS Enrollment Year



This program assessment study also looked for other WTCS sources for UWS nursing majors. Of the students in the cohort with a nursing major at the UWS, 28 percent were in WTCS nursing assistant programs and 22 percent were in WTCS nursing applied associate degree programs (Table 6). However, students from liberal arts programs and other WTCS programs also pursued UWS nursing majors. About one third of the UWS nursing students were not enrolled in a specific WTCS program.

Table 6
WTCS/UWS Assessment Cohorts - Overall
WTCS Source Programs
for UWS Nursing Majors

WTCS Program/Program Group	# of Students	% of Total	% of Sub-Total
Nursing Assistant	498	28%	41%
Nursing Applied Associate Degree	402	22%	33%
Liberal Arts	126	7%	10%
Other Health Programs	89	5%	7%
Other Programs	106	6%	9%
Sub-Total	1,221	68%	100%
Undeclared	570	32%	
Total	1,791	100%	

Early Childhood Education

The 2007 program assessment study included 471 students who were enrolled in WTCS early childhood education applied associate degree programs between 1994-95 and 2004-05 and subsequently enrolled at a UW institution (Table 7). Since 1994-95, the overall trend indicates an increase in the number of WTCS early childhood students continuing their education in the UWS. Similar to the trend shown for the overall cohort (Table 1), a large portion of the early childhood students (55%) came to the UWS in the year following their WTCS enrollment while, for some students, there was a considerable gap between their last WTCS year and initial UWS enrollment year. Refer to Appendix K for enrollment of students in WTCS early childhood education applied associate degree programs by WTCS district and UWS institution. Appendix L summarizes WTCS/UWS transfer agreements for WTCS early childhood education programs.

Table 7
WTCS/UWS Assessment Cohorts
WTCS Early Childhood Education Students
by Last WTCS and Initial UWS Enrollment Years

Last WTCS Year	UWS Cohort Year											
	95-96	96-97	97-98	98-99	99-00	00-01	01-02	02-03	03-04	04-05	05-06	Total
94-95	8	4	1	2	3		1	1	2	1		23
95-96	1	12	2	2	1	2	1			2	1	24
96-97		2	13	4	4	2			1	1	1	28
97-98			4	18	3	3	4	2	2	1	1	38
98-99				9	20	6	5	2	3		1	46
99-00					12	22	5	6	3	2	1	51
00-01						6	25	4	1	3	2	41
01-02							15	23	8	5	1	52
02-03								8	35	9	5	57
03-04									12	37	8	57
04-05										6	48	54
Total	9	18	20	35	43	41	56	46	67	67	69	471

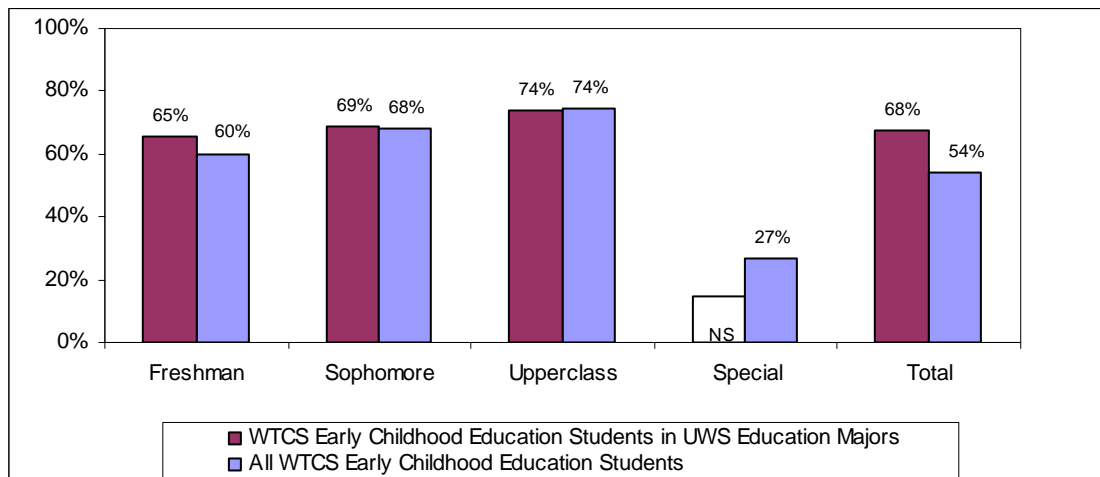
Table 8 shows the type of UWS majors chosen by WTCS early childhood education students. Students in this group predominately entered a UWS major in the Education area. Some of the WTCS early childhood students in the undeclared group may be seeking a UWS education degree but had not yet been admitted to the UWS education major.

Table 8
WTCS/UWS Assessment Cohorts
WTCS Early Childhood Education Students
by UWS Major Group

UWS Major Group	# of Students	% of Total	% of Sub-Total
Biological/Physical Sciences (02)	1	0%	0%
Business (03)	4	1%	2%
Communications/Arts (04)	11	2%	4%
Education (05)	158	34%	64%
Engineering & Architecture (06)	2	0%	1%
Health-Related Professions (07)	14	3%	6%
Home Economics/Personal Services (08)	7	1%	3%
Humanities/Liberal Arts (09)	15	3%	6%
Math, Computer & Info Sciences (10)	1	0%	0%
Public Admin/Legal Services (11)	13	3%	5%
Social Sciences (12)	21	4%	9%
Sub-Total	247	52%	100%
Undeclared	224	48%	
Total	471	100%	

WTCS early childhood education students who declared a UWS major in the Education area had an overall second year retention rate of 68 percent (Figure 12). This compares to 54 percent for all WTCS early childhood students in the assessment study. See Appendix F for details.

Figure 12
Second Year Retention for WTCS/UWS Assessment Cohorts
WTCS Early Childhood Education Students
by Initial UWS Student Classification

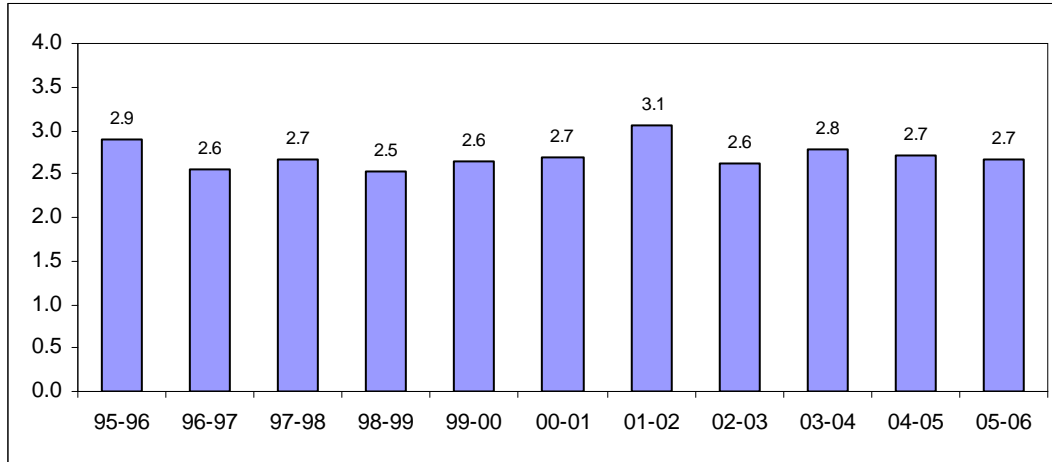


NS – not shown due to small cohort size.

Within the assessment cohorts who enrolled in the UWS from 1995-96 to 2000-01 as degree-seeking students, WTCS early childhood students who had declared a UWS major in the Education area had a six-year graduation rate of 39 percent, compared to 25 percent for WTCS early childhood students as a group. See Appendix G for details.

The average first year GPA for WTCS early childhood education students varied from 2.5 for students who enrolled in the UWS in 1998-99 to 3.1 for those who enrolled in 2001-02 (Figure 13). Some of the year-to-year variability in the average GPAs may be due to the small early childhood cohort size. See Appendix H for details.

Figure 13
Average First Year GPA for WTCS/UWS Assessment Cohorts
WTCS Early Childhood Education Students
by Initial UWS Enrollment Year



Students in the cohort entered UWS early childhood/elementary education majors from a variety of WTCS programs (Table 9). Eighteen percent were in WTCS liberal arts programs and 8 percent were in the WTCS early childhood/ elementary education programs. Students in WTCS nursing assistant, child care services, business and other health programs composed 26 percent of UWS students in early childhood/elementary education majors in the assessment cohort, while those who were not enrolled in a specific WTCS program made up 40 percent.

Table 9
WTCS/UWS Assessment Cohorts
WTCS Source Programs
for UWS Early Childhood/Elementary Education Majors

WTCS Program/Program Group	# of Students	% of Total	% of Sub-Total
Liberal Arts	269	18%	30%
Early Childhood Ed	123	8%	14%
Nursing Assistant	88	6%	10%
Child Care Services	43	3%	5%
Business Programs	141	9%	16%
Other Health Programs	113	8%	13%
Other Programs	115	8%	13%
Sub-Total	892	60%	100%
Undeclared	588	40%	
Total	1,486	100%	

Information Technology (IT)

The 2007 program assessment cohort included 1,486 students who were enrolled in WTCS information technology (IT) applied associate degree programs between 1994-95 and 2004-05 and subsequently enrolled at a UW institution (Table 10). Since 1994-95, the overall trend indicates an increase in the number of WTCS IT students continuing their education in the UWS. Students in the IT group showed similar patterns as students in other program groups and in the overall cohort as the largest group of students (49%) enrolled in the UWS in the year following their WTCS enrollment. Refer to Appendix M for enrollment of students in WTCS information technology (IT) applied associate degree programs by WTCS district and UWS institution. Appendix N summarizes WTCS/UWS transfer agreements for WTCS IT programs.

**Table 10
WTCS/UWS Assessment Cohorts
WTCS Information Technology (IT) Students
by Last WTCS and Initial UWS Enrollment Years**

Last WTCS Year	UWS Cohort Year											
	95-96	96-97	97-98	98-99	99-00	00-01	01-02	02-03	03-04	04-05	05-06	Total
94-95	24	8	10	4	4	3	4	1	2	2	2	64
95-96	11	38	12	6	7	6	4	4	4	2		94
96-97		7	43	13	11	5	9	3	3	2	2	98
97-98			15	54	12	9	11	11	4	9	4	129
98-99				25	53	21	10	6	12	7	2	136
99-00					22	65	25	20	16	8	5	161
00-01						37	90	28	15	16	10	196
01-02							39	93	27	21	6	186
02-03								47	88	23	14	172
03-04									28	81	26	135
04-05										25	90	115
Total	35	53	80	102	109	146	192	213	199	196	161	1,486

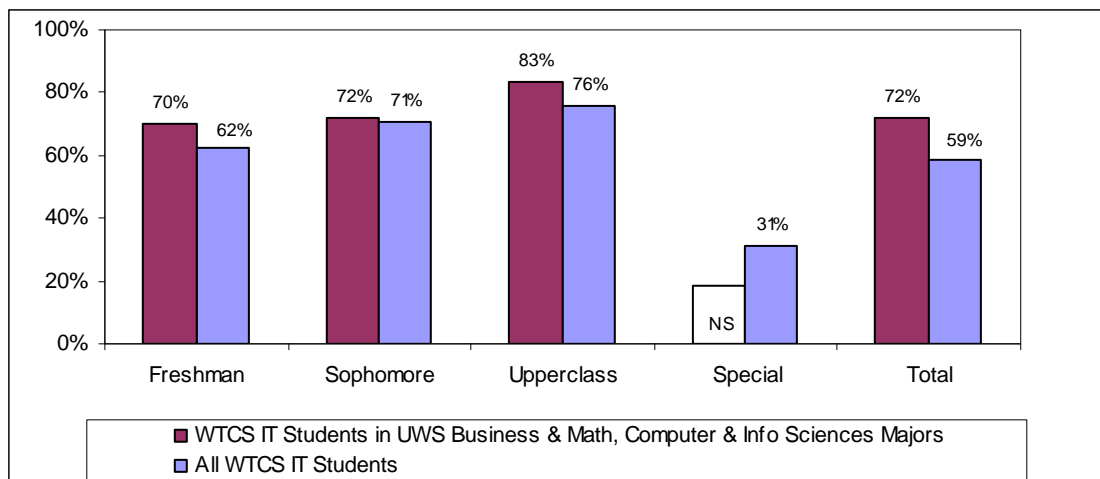
Of the information technology students, almost 30 percent pursued UWS majors in either the Business area or the Math, Computer & Information Sciences area (Table 11). This illustrates the two different directions that IT students can pursue at a UW institution – either entering majors with a business focus such as Management Information Systems or majors with a computer/information science focus. However, some IT students changed direction and enrolled in majors in Social Sciences, Communications/Arts, Education, and Humanities/Liberal Arts areas.

Table 11
WTCS/UWS Assessment Cohorts
WTCS Information Technology (IT) Students
by UWS Major Group

UWS Major Group	# of Students	% of Total	% of Sub-Total
Ag & Nat Resources (01)	7	0%	1%
Biological/Physical Sciences (02)	31	2%	4%
Business (03)	179	12%	23%
Communications/Arts (04)	56	4%	7%
Education (05)	54	4%	7%
Engineering & Architecture (06)	18	1%	2%
Health-Related Professions (07)	35	2%	4%
Home Economics/Personal Services (08)	2	0%	0%
Humanities/Liberal Arts (09)	55	4%	7%
Math, Computer & Info Sciences (10)	256	17%	33%
Public Admin/Legal Services (11)	20	1%	3%
Social Sciences (12)	68	5%	9%
Sub-Total	781	53%	100%
Undeclared	705	47%	
Total	1,486	100%	

WTCS IT students who declared a UWS major in the Business or Math, Computer & Information Sciences area had an overall second year retention rate of 72 percent (Figure 14). This compares to 59 percent for all WTCS IT students in the assessment study. See Appendix F for details.

Figure 14
Second Year Retention for WTCS/UWS Assessment Cohorts
WTCS Information Technology (IT) Students
by Initial UWS Student Classification

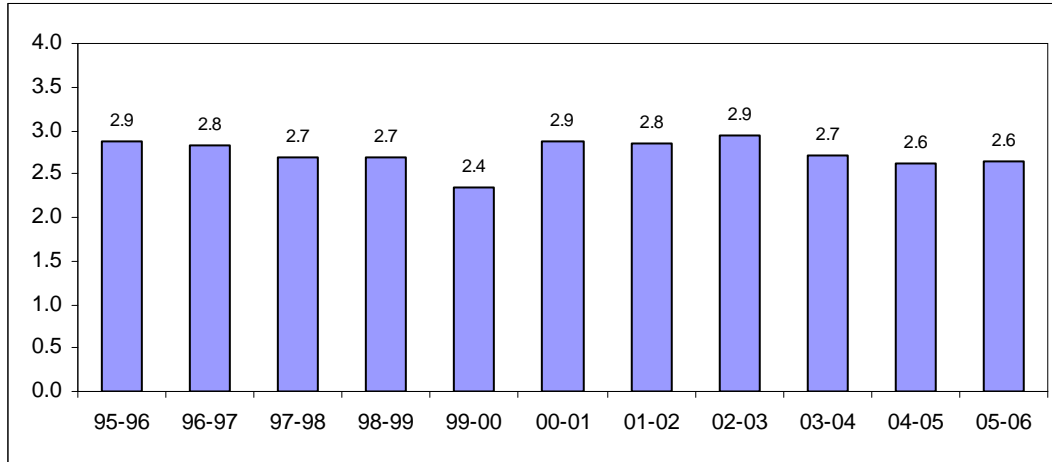


NS – Not shown due to small cohort size.

Within the assessment cohorts who enrolled in the UWS from 1995-96 to 2000-01 as degree-seeking students, WTCS IT students who had declared a UWS major in the Business or Math, Computer & Information Sciences area had a six-year graduation rate of 33 percent, compared to 19 percent for WTCS IT students as a group. See Appendix G for details.

The average first year GPA for WTCS IT students varied from 2.4 to 2.9 (Figure 15). In general, WTCS IT students had comparable average first year GPAs to students in the overall assessment group. See Appendix H for details.

Figure 15
Average First Year GPA for WTCS/UWS Assessment Cohorts
WTCS Information Technology (IT) Students
by Initial UWS Enrollment Year



Students in a variety of WTCS programs later declared a UWS Computer Science/Information Systems major (Table 12). Within the cohort, the largest source was WTCS information technology programs (22%), followed by WTCS liberal arts programs (13%). Students in WTCS engineering technology, business, and health programs also pursued UWS Computer Science/Information Systems majors.

Table 12
WTCS/UWS Assessment Cohorts
WTCS Source Programs
for UWS Computer Science/Information Systems Majors

WTCS Program/Program Group	# of Students	% of Total	% of Sub-Total
Information Technology	248	22%	40%
Liberal Arts	149	13%	24%
Engineering Technology	64	6%	10%
Business Programs	58	5%	9%
Health Programs	33	3%	5%
Other Programs	69	6%	11%
Sub-Total	621	56%	100%
Undeclared	492	44%	
Total	1,113	100%	

Marketing

The 2007 program assessment cohort included 1,375 students who were enrolled in WTCS marketing applied associate degree programs between 1994-95 and 2004-05 and subsequently enrolled at a UW institution (Table 13). Since 1994-95, the overall trend indicates a significant increase in the number of WTCS marketing students continuing their education in the UWS. Students in the marketing group showed similar patterns as students in other program groups and in the overall cohort with the majority of students (51%) enrolling in the UWS in the year following their WTCS enrollment. Refer to Appendix O for enrollment of students in WTCS marketing applied associate degree programs by WTCS district and UW institution. Appendix P summarizes WTCS/UWS transfer agreements for WTCS marketing programs.

Table 13
WTCS/UWS Assessment Cohorts
WTCS Marketing Students
by Last WTCS and Initial UWS Enrollment Years

Last WTCS Year	UWS Cohort Year											
	95-96	96-97	97-98	98-99	99-00	00-01	01-02	02-03	03-04	04-05	05-06	Total
94-95	41	17	6	5	5	4	1			1		80
95-96	12	53	13	7	14	4	2	1	2	2	1	111
96-97		26	43	19	11	5	7	3	4		1	119
97-98			18	46	13	9	7	4	3	2	2	104
98-99				32	57	13	10	3	2	3	1	121
99-00					24	53	19	5	8	6	2	117
00-01						30	79	11	7	6	6	139
01-02							46	66	22	11	7	152
02-03								38	60	16	10	124
03-04									46	85	13	144
04-05										41	123	164
Total	53	96	80	109	124	118	171	131	154	173	166	1,375

WTCS marketing students in the cohort pursued two principal types of majors at the UWS (Table 14). A large group of students enrolled in business majors (26%) while a significant group of students entered UWS education majors (11%). Of the 149 students in UWS education majors, more than half were in the business/marketing education majors.

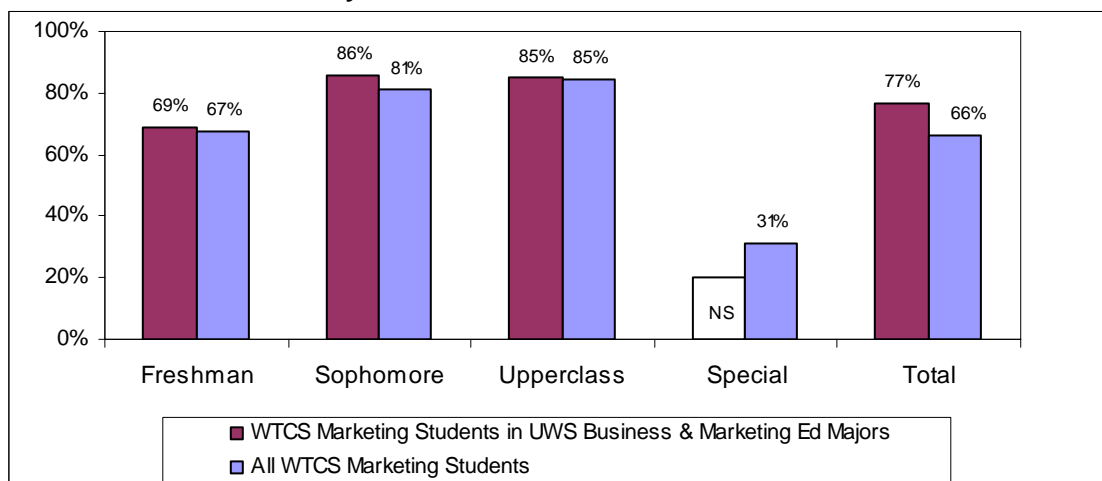
UW-Stout offers a major in marketing education and has marketing-to-marketing education transfer agreements with nine WTCS districts. Out of the 1,375 WTCS marketing students in the cohort, 274 enrolled at UW-Stout (20%) as shown in Appendix O.

Table 14
WTCS/UWS Assessment Cohorts
WTCS Marketing Students by UWS Major Group

UWS Major Group	# of Students	% of Total	% of Sub-Total
Ag & Nat Resources (01)	7	1%	1%
Biological/Physical Sciences (02)	19	1%	2%
Business (03)	357	26%	43%
Communications/Arts (04)	75	5%	9%
Education (05)	149	11%	18%
Engineering & Architecture (06)	5	0%	1%
Health-Related Professions (07)	41	3%	5%
Home Economics/Personal Services (08)	6	0%	1%
Humanities/Liberal Arts (09)	54	4%	7%
Math, Computer & Info Sciences (10)	10	1%	1%
Public Admin/Legal Services (11)	22	2%	3%
Social Sciences (12)	84	6%	10%
Sub-Total	829	60%	100%
Undeclared	546	40%	
Total	1,375	100%	

WTCS marketing students who declared a UWS major in the Business or marketing education areas had an overall second year retention rate of 77 percent (Figure 16). This compares to 66 percent for all WTCS marketing students in the assessment study. See Appendix F for details.

Figure 16
Second Year Retention for WTCS/UWS Assessment Cohorts
WTCS Marketing Students
by Initial UWS Student Classification

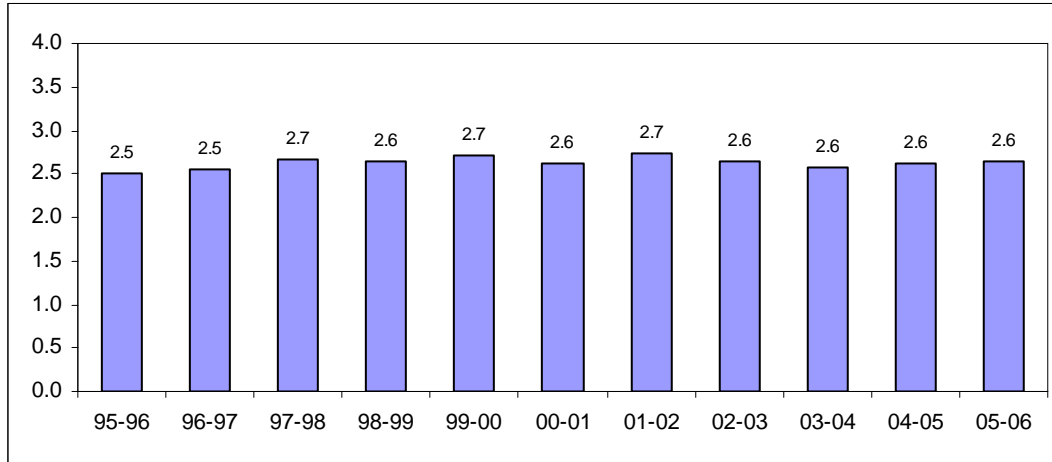


NS – Not shown due to small cohort size.

Within the assessment cohorts who enrolled in the UWS from 1995-96 to 2000-01 as degree-seeking students, WTCS marketing students who had declared a UWS major in the Business or marketing education areas had a six-year graduation rate of 46 percent, compared to 27 percent for WTCS marketing students as a group. See Appendix G for details.

The average first year GPA for WTCS marketing students ranged between 2.5 and 2.7 (Figure 17). In general, WTCS marketing students had a slightly lower average first year GPA than students in the overall assessment group. See Appendix H for details.

Figure 17
Average First Year GPA for WTCS/UWS Assessment Cohorts
WTCS Marketing Students
by Initial UWS Enrollment Year



Students in a variety of WTCS programs later declared a UWS Business Administration/Management or Marketing major (Table 15). Within the cohort, WTCS liberal arts programs were the largest single source (14%). WTCS marketing students comprised 12 percent of the UWS Business Administration/Management or Marketing major in the study.

Table 15
WTCS/UWS Assessment Cohorts
WTCS Source Programs
for UWS Business Administration/Management/Marketing Majors

WTCS Program/Program Group	# of Students	% of Total	% of Sub-Total
Liberal Arts	408	14%	24%
Marketing	347	12%	20%
Accounting	162	6%	9%
Other Business Programs	289	10%	17%
Health Programs	142	5%	8%
Information Technology	89	3%	5%
Public Admin/Legal Services Programs	84	3%	5%
Other Programs	185	6%	11%
Sub-Total	1,706	59%	100%
Undeclared	1,199	41%	
Total	2,905	100%	

Criminal Justice

WTCS criminal justice applied associate degree programs were included in the program assessment study as an emerging area for System-to-System articulation. The 2007 assessment cohort included 1,090 students who were enrolled in WTCS criminal justice programs between 1994-95 and 2004-05 and subsequently enrolled at a UW institution (Table 16). Refer to Appendix Q for enrollment of students in WTCS criminal justice applied associate degree programs by WTCS district and UWS institution. Appendix R summarizes WTCS/UWS transfer agreements for WTCS criminal justice programs.

**Table 16
WTCS/UWS Assessment Cohorts
WTCS Criminal Justice Students
by Last WTCS and Initial UWS Enrollment Years**

Last WTCS Year	UWS Cohort Year											Total
	95-96	96-97	97-98	98-99	99-00	00-01	01-02	02-03	03-04	04-05	05-06	
94-95	41	15	12	4	8	2	3	1	4	1	2	93
95-96	13	41	20	5	3	4	5	2	3	1	1	98
96-97		13	46	14	7	8	3	6	3	3	2	105
97-98			11	43	15	11	6	4	6		1	97
98-99				16	56	12	8	7	1	4	5	109
99-00					15	36	10	6	5	4	3	79
00-01						20	58	8	7	4	3	100
01-02							16	50	15	8	6	95
02-03								32	57	13	8	110
03-04									24	55	14	93
04-05										21	90	111
Total	54	69	89	82	104	93	109	116	125	114	135	1,090

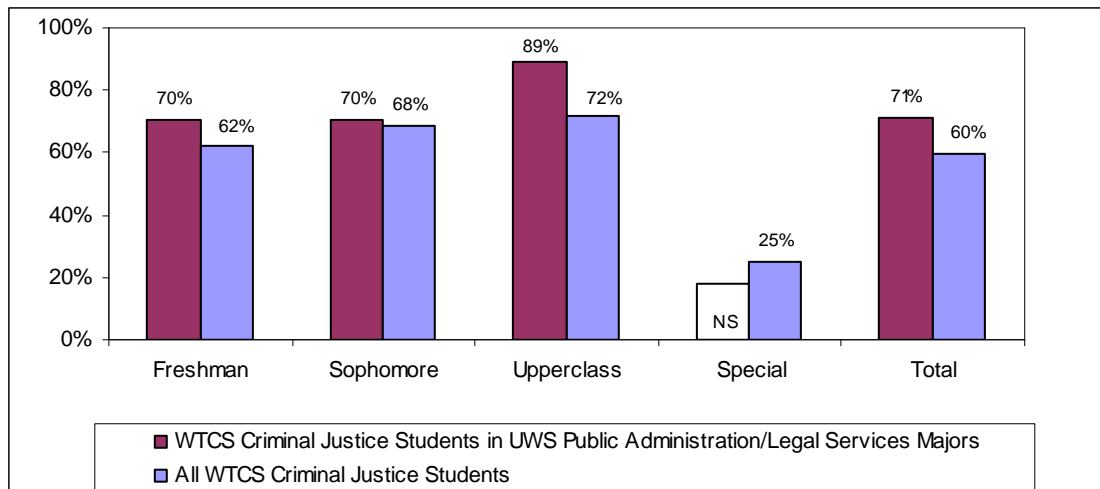
WTCS criminal justice students in the cohort pursued two principal types of majors at the UWS (Table 17). One group of students (30% of the students with declared majors) enrolled in majors in the Public Administration/Legal Services area. These students typically majored in Criminal Justice at the UW campus. A second group of criminal justice students (23% of the students with declared majors) enrolled in UWS majors in the Social Sciences area, which includes UWS Social Work majors. In addition, criminal justice students enrolled in a variety of UWS majors groups, including Business and Education.

Table 17
WTCS/UWS Assessment Cohorts
WTCS Criminal Justice Students
by UWS Major Group

UWS Major Group	# of Students	% of Total	% of Sub-Total
Ag & Nat Resources (01)	12	1%	2%
Biological/Physical Sciences (02)	19	2%	3%
Business (03)	73	7%	12%
Communications/Arts (04)	33	3%	6%
Education (05)	55	5%	9%
Engineering & Architecture (06)	5	0%	1%
Health-Related Professions (07)	37	3%	6%
Home Economics/Personal Services (08)	2	0%	0%
Humanities/Liberal Arts (09)	35	3%	6%
Math, Computer & Info Sciences (10)	9	1%	2%
Public Admin/Legal Services (11)	181	17%	30%
Social Sciences (12)	137	13%	23%
Sub-Total	598	55%	100%
Undeclared	492	45%	
Total	1,090	100%	

WTCS criminal justice students who declared a UWS major in the Public Administration/Legal Services area had an overall second year retention rate of 71 percent (Figure 18). This compares to 60 percent for all WTCS criminal justice students in the assessment study. See Appendix F for details.

Figure 18
Second Year Retention for WTCS/UWS Assessment Cohorts
WTCS Criminal Justice Students
by Initial UWS Student Classification

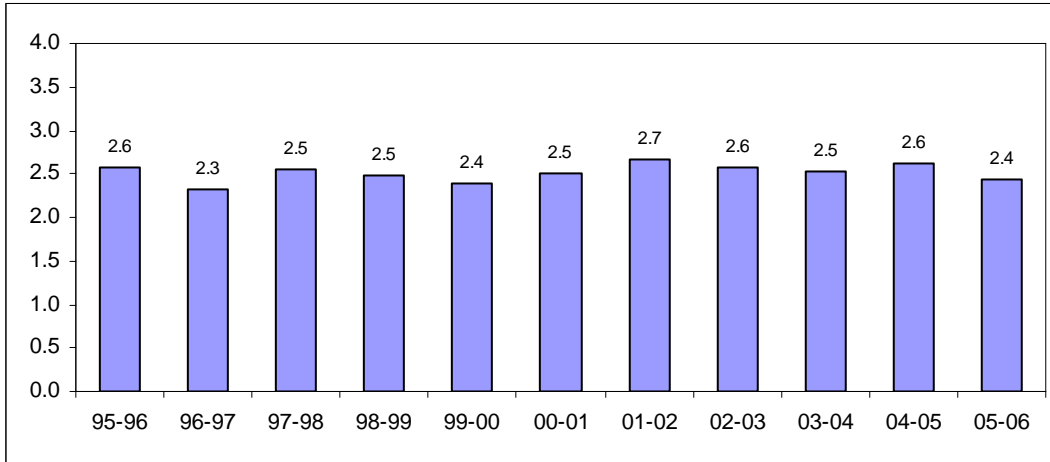


NS – Not shown due to small cohort size.

Within the assessment cohorts who enrolled in the UWS from 1995-96 to 2000-01 as degree-seeking students, WTCS criminal justice students who had declared a UWS major in the Public Administration/Legal Services area had a six-year graduation rate of 44 percent, compared to 19 percent for WTCS criminal justice students as a group. See Appendix G for details.

The average first year GPA for WTCS criminal justice students varied from 2.3 for students who enrolled in UWS in 1996-97 to 2.7 for those who enrolled in 2001-02 (Figure 19). In general, WTCS criminal justice students had a lower average first year GPA than students in the overall assessment group. See Appendix H for details.

Figure 19
Average First Year GPA for WTCS/UWS Assessment Cohorts
WTCS Criminal Justice Students
by Initial UWS Enrollment Year



A distinct path is shown from WTCS criminal justice programs to UWS criminal justice majors with 23 percent of the students in the UWS criminal justice majors in the study coming from WTCS criminal justice programs (Table 18). Liberal arts students were also a source of UWS criminal justice majors. Two WTCS programs, Health and Business programs, contributed 11 percent to the UWS Criminal Justice students in the assessment cohort.

Table 18
WTCS/UWS Assessment Cohorts
WTCS Source Programs
for UWS Criminal Justice Majors

WTCS Program/Program Group	# of Students	% of Total	% of Sub-Total
Police Science/Criminal Justice	155	23%	42%
Liberal Arts	86	13%	23%
Health Programs	43	6%	12%
Business Programs	31	5%	8%
Other Public Admin/Legal Services Programs	21	3%	6%
Other Programs	33	5%	9%
Sub-Total	369	55%	100%
Undeclared	298	45%	
Total	667	100%	

Accounting

The 2007 assessment cohort included 950 students who were enrolled in WTCS accounting applied associate degree programs between 1994-95 and 2004-05 and subsequently enrolled at a UW institution (Table 19). Refer to Appendix S for enrollment of students in WTCS accounting programs by WTCS district and UWS institution. Appendix T summarizes WTCS/UWS transfer agreements for WTCS accounting programs.

**Table 19
WTCS/UWS Assessment Cohorts
WTCS Accounting Students
by Last WTCS and Initial UWS Enrollment Years**

Last WTCS Year	UWS Cohort Year											Total
	95-96	96-97	97-98	98-99	99-00	00-01	01-02	02-03	03-04	04-05	05-06	
94-95	31	15	11	10	6	4	2	5	2	2		88
95-96	15	52	12	9	6	8	5	2	2	3	1	115
96-97		14	37	12	7	12	2	4	3	4		95
97-98			10	35	15	4		4	1	2		71
98-99				10	24	8	9	11	2	3	3	70
99-00					17	32	19	3	4	3	7	85
00-01						17	36	9	6	8	7	83
01-02							22	40	5	5	1	73
02-03								25	43	21	8	97
03-04									22	47	9	78
04-05										27	68	95
Total	46	81	70	76	75	85	95	103	90	125	104	950

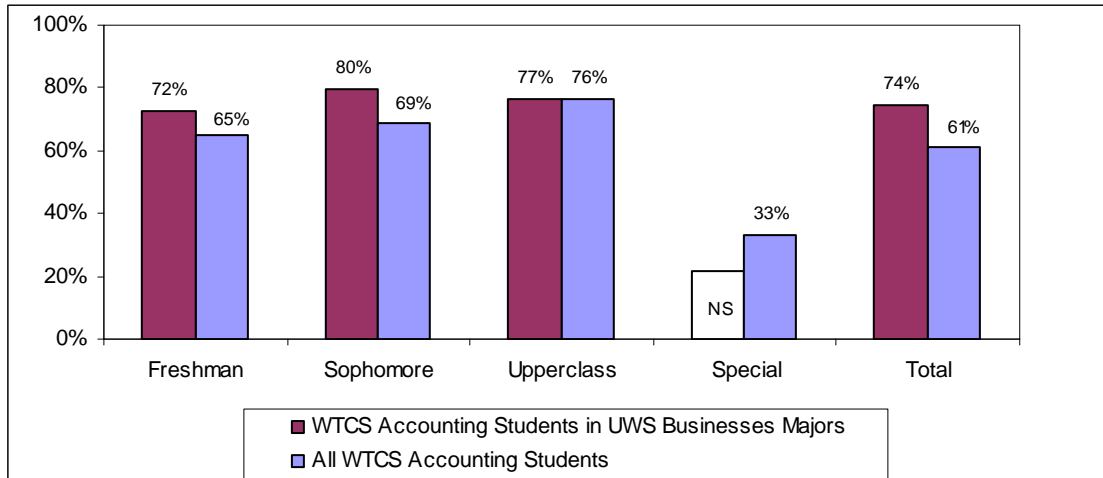
The majority of WTCS accounting applied associate degree students in the cohort enrolled in the UWS Business area (61% of the students with declared majors). These students typically majored in accounting at the UWS.

**Table 20
WTCS/UWS Assessment Cohorts
WTCS Accounting Students
by UWS Major Group**

UWS Major Group	# of Students	% of Total	% of Sub-Total
Ag & Nat Resources (01)	6	1%	1%
Biological/Physical Sciences (02)	18	2%	3%
Business (03)	329	35%	61%
Communications/Arts (04)	21	2%	4%
Education (05)	48	5%	9%
Engineering & Architecture (06)	3	0%	1%
Health-Related Professions (07)	15	2%	3%
Home Economics/Personal Services (08)	3	0%	1%
Humanities/Liberal Arts (09)	29	3%	5%
Math, Computer & Info Sciences (10)	15	2%	3%
Public Admin/Legal Services (11)	15	2%	3%
Social Sciences (12)	38	4%	7%
Sub-Total	540	57%	100%
Undeclared	410	43%	
Total	950	100%	

WTCS accounting students who declared a UWS major in the Business area had an overall second year retention rate of 74 percent (Figure 20). This compares to 61 percent for all WTCS accounting students in the assessment study. See Appendix F for details.

Figure 20
Second Year Retention for WTCS/UWS Assessment Cohorts
WTCS Accounting Students
by Initial UWS Student Classification

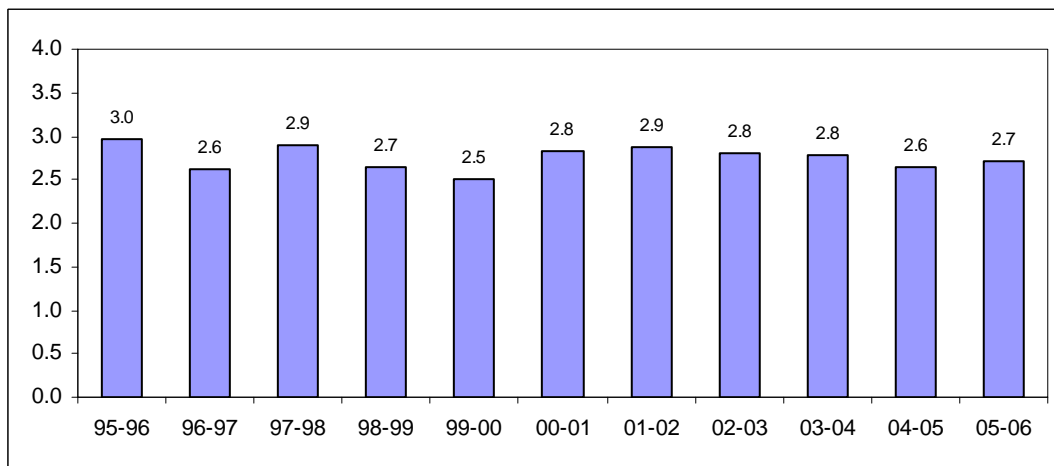


NS – Not shown due to small cohort size.

Within the assessment cohorts who enrolled in the UWS from 1995-96 to 2000-01 as degree-seeking students, WTCS accounting students who had declared a UWS major in the Business area had a six-year graduation rate of 36 percent, compared to 21 percent for WTCS accounting students as a group. See Appendix G for details.

The average first year GPA for WTCS accounting students varied from 2.5 for students who enrolled in UWS in 1999-00 to 3.0 for those who enrolled in 1995-96 (Figure 21). See Appendix H for details.

Figure 21
Average First Year GPA for WTCS/UWS Assessment Cohorts
WTCS Accounting Students
by Initial UWS Enrollment Year



Students in a variety of WTCS programs later declared a UWS major in the Business area (Table 21). Within the cohort, WTCS liberal arts programs were the largest single source (15%). Students in WTCS business programs, including accounting, marketing, and other business programs, made up 25 percent of the students in UWS business majors in this study.

**Table 21
WTCS/UWS Assessment Cohorts
WTCS Source Programs
for UWS Business Majors**

WTCS Program/Program Group	# of Students	% of Total	% of Sub-Total
Liberal Arts	718	15%	25%
Marketing	357	7%	12%
Accounting	329	7%	11%
Other Business Programs	527	11%	18%
Health Programs	220	4%	8%
Engineering Technology	193	4%	7%
Information Technology	184	4%	6%
Public Admin/Legal Services Programs	130	3%	4%
Other Programs	254	5%	9%
Sub-Total	2,912	59%	100%
Undeclared	2,033	41%	
Total	4,945	100%	

Engineering Technology

The 2007 assessment cohort included 1,631 students who were enrolled in WTCS engineering technology applied associate degree programs between 1994-95 and 2004-05 and subsequently enrolled at a UW institution (Table 22). Refer to Appendix U for enrollment of students in WTCS engineering technology programs by WTCS district and UWS institution. Appendix V summarizes WTCS/UWS transfer agreements for WTCS engineering technology programs.

**Table 22
WTCS/UWS Assessment Cohorts
WTCS Engineering Technology Students
by Last WTCS and Initial UWS Enrollment Years**

Last WTCS Year	UWS Cohort Year											Total
	95-96	96-97	97-98	98-99	99-00	00-01	01-02	02-03	03-04	04-05	05-06	
94-95	70	21	13	10	9	4	7	3	4	4	2	147
95-96	17	63	23	22	14	8	8	4	2	6	6	173
96-97		21	61	31	23	11	16	9	7	3	4	186
97-98			24	71	29	13	14	9	8	9	3	180
98-99				25	66	32	18	15	9	8	2	175
99-00					26	76	19	14	15	7	2	159
00-01						16	56	24	13	11	4	124
01-02							28	67	26	15	6	142
02-03								25	74	18	9	126
03-04									24	80	20	124
04-05										22	73	95
Total	87	105	121	159	167	160	166	170	182	183	131	1,631

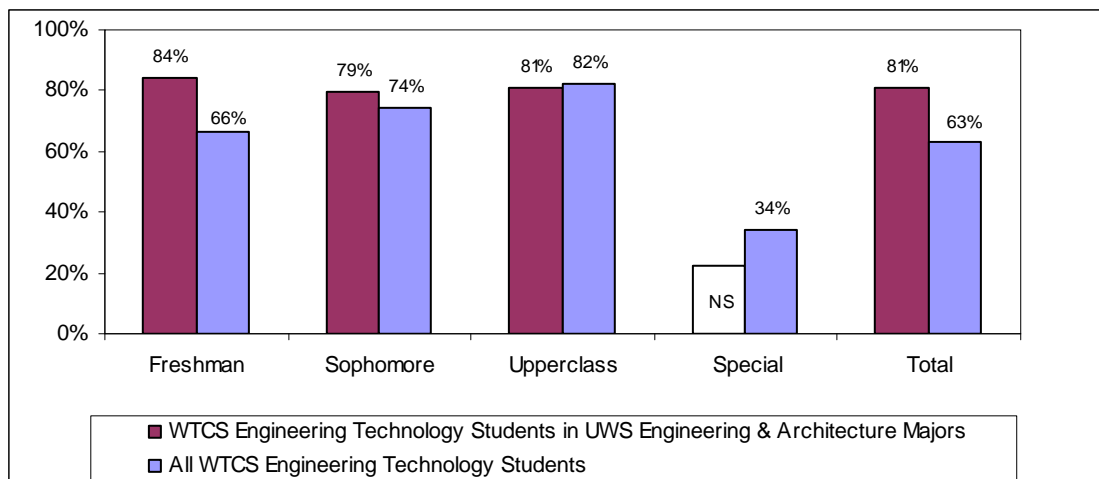
WTCS engineering technology students in the cohort pursued two principal types of majors at the UWS (Table 23). One group of students (31% of the students with declared majors) enrolled in majors in the Engineering & Architecture area. These students were typically enrolled in engineering/engineering technology majors at the UW campus. A second group of the WTCS engineering technology students (24% of the students with declared majors) enrolled in the UWS Business area. In addition, WTCS engineering technology students enrolled in a variety of UWS major groups, including Education and Math, Computer & Information Sciences.

Table 23
WTCS/UWS Assessment Cohorts
WTCS Engineering Technology Students
by UWS Major Group

UWS Major Group	# of Students	% of Total	% of Sub-Total
Ag & Nat Resources (01)	19	1%	2%
Biological/Physical Sciences (02)	31	2%	4%
Business (03)	190	12%	24%
Communications/Arts (04)	33	2%	4%
Education (05)	90	6%	12%
Engineering & Architecture (06)	240	15%	31%
Health-Related Professions (07)	27	2%	3%
Home Economics/Personal Services (08)	1	0%	0%
Humanities/Liberal Arts (09)	27	2%	3%
Math, Computer & Info Sciences (10)	74	5%	9%
Public Admin/Legal Services (11)	10	1%	1%
Social Sciences (12)	39	2%	5%
Sub-Total	781	48%	100%
Undeclared	850	52%	
Total	1,631	100%	

WTCS engineering technology students who declared a UWS major in the Engineering & Architecture area had an overall second year retention rate of 81 percent (Figure 22). This compares to 63 percent for all WTCS engineering technology students in the assessment study. See Appendix F for details.

Figure 22
Second Year Retention for WTCS/UWS Assessment Cohorts
WTCS Engineering Technology Students
by Initial UWS Student Classification

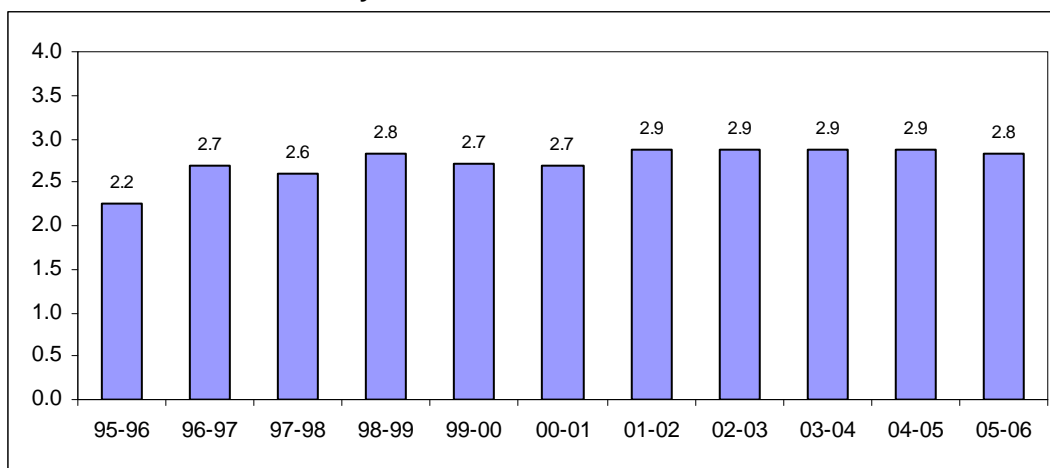


NS – Not shown due to small cohort size.

Within the assessment cohorts who enrolled in the UWS from 1995-96 to 2000-01 as degree-seeking students, WTCS engineering technology students who had declared a UWS major in the Engineering & Architecture area had a six-year graduation rate of 47 percent, compared to 21 percent for WTCS engineering technology students as a group. See Appendix G for details.

The average first year GPA for WTCS engineering technology students varied from 2.2 for students who enrolled in UWS in 1995-96 to 2.9 for those who enrolled between 2001-02 and 2004-05 (Figure 23).

Figure 23
Average First Year GPA for WTCS/UWS Assessment Cohorts
WTCS Engineering Technology Students
by Initial UWS Enrollment Year



A distinct path is shown from WTCS engineering technology programs to UWS engineering/engineering technology majors with 23 percent of the students in UWS engineering/engineering technology in the study coming from WTCS engineering technology programs (Table 24). Liberal arts students (16%) were also a source of UWS engineering/engineering technology majors. Seven percent of UWS engineering/engineering technology students in the cohort were in the WTCS Trades/Technical program group.

Table 24
WTCS/UWS Assessment Cohorts
WTCS Source Programs
for UWS Engineering/Engineering Technology Majors

WTCS Program/Program Group	# of Students	% of Total	% of Sub-Total
Engineering Technology	305	23%	40%
Liberal Arts	211	16%	27%
Trades/Technical Programs	93	7%	12%
Business Programs	71	5%	9%
Other Programs	90	7%	12%
Sub-Total	770	57%	100%
Undeclared	583	43%	
Total	1,353	100%	

Liberal Arts

The 2007 assessment cohort included 6,625 students who were enrolled in WTCS liberal arts programs between 1994-95 and 2004-05 and subsequently enrolled at a UW institution (Table 25). Refer to Appendix W for enrollment of students in WTCS liberal arts programs by WTCS district and UWS institution.

Table 25
WTCS/UWS Assessment Cohorts
WTCS Liberal Arts Students
by Last WTCS and Initial UWS Enrollment Years

Last WTCS Year	UWS Cohort Year											Total
	95-96	96-97	97-98	98-99	99-00	00-01	01-02	02-03	03-04	04-05	05-06	
94-95	420	36	13	15	13	8	4	4	3	3	1	520
95-96	197	440	56	20	14	8	5	7	3	6	4	760
96-97		188	397	49	15	14	11	11	5	5	1	696
97-98			200	401	38	23	19	5	5	4	2	697
98-99				170	362	43	23	16	13	1	1	629
99-00					147	350	33	19	21	4	6	580
00-01						153	350	44	17	12	8	584
01-02							192	354	35	23	14	618
02-03								145	310	40	23	518
03-04									142	277	38	457
04-05										146	420	566
Total	617	664	666	655	589	599	637	605	554	521	518	6,625

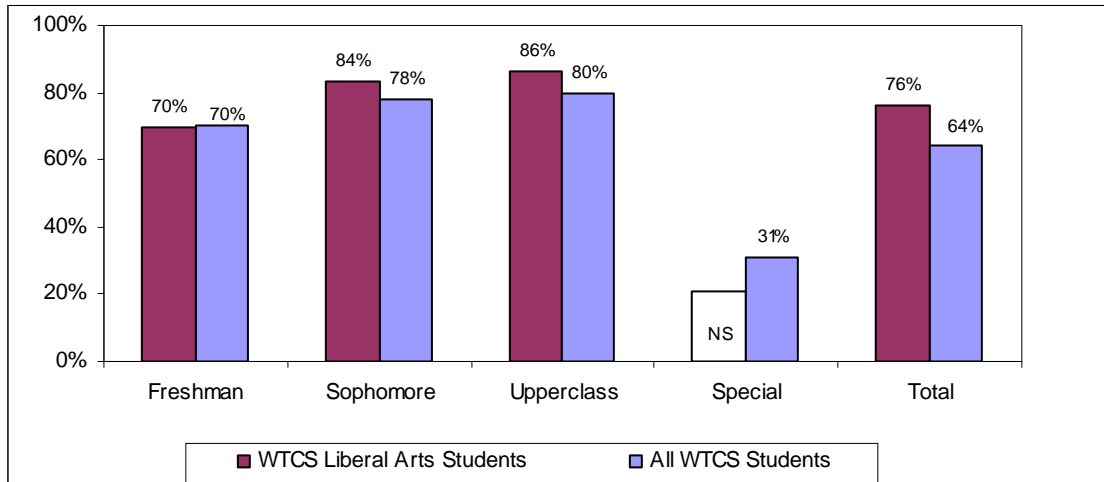
WTCS liberal arts students in the cohort pursued a variety of majors at the UWS (Table 26). The top UWS major groups that students initially enrolled were in Education (721), Business (718), Social Sciences (683), and Communications/Arts (562).

Table 26
WTCS/UWS Assessment Cohorts
WTCS Liberal Arts Students
by UWS Major Group

UWS Major Group	# of Students	% of Total	% of Sub-Total
Ag & Nat Resources (01)	161	2%	3%
Biological/Physical Sciences (02)	275	4%	6%
Business (03)	718	11%	15%
Communications/Arts (04)	562	8%	12%
Education (05)	721	11%	16%
Engineering & Architecture (06)	235	4%	5%
Health-Related Professions (07)	390	6%	8%
Home Economics/Personal Services (08)	83	1%	2%
Humanities/Liberal Arts (09)	376	6%	8%
Math, Computer & Info Sciences (10)	169	3%	4%
Public Admin/Legal Services (11)	261	4%	6%
Social Sciences (12)	683	10%	15%
Sub-Total	4,634	70%	100%
Undeclared	1,991	30%	
Total	6,625	100%	

WTCS liberal arts students had an overall second year retention rate of 76 percent at the UWS (Figure 24). This compares to 64 percent for all students in the assessment study. See Appendices E and F for details.

Figure 24
Second Year Retention for WTCS/UWS Assessment Cohorts
WTCS Liberal Arts Students
by Initial UWS Student Classification

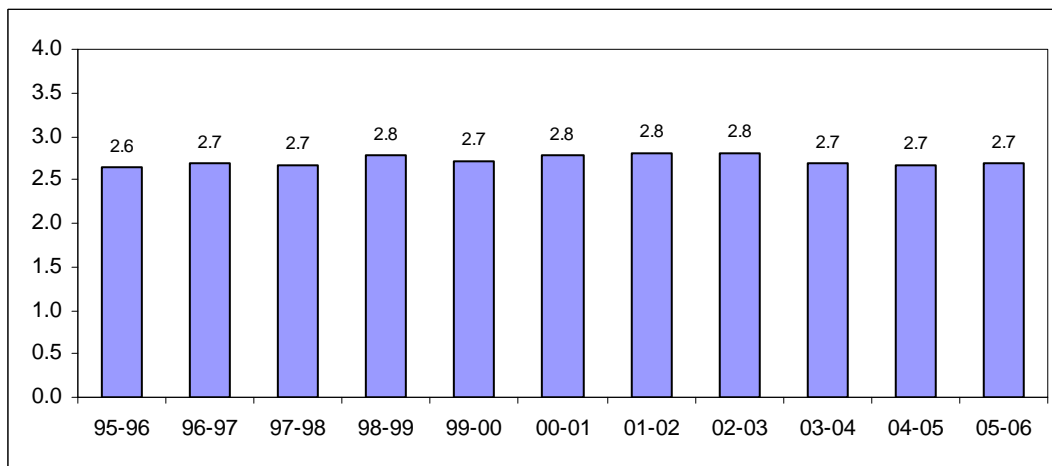


NS – Not shown due to small cohort size.

Within the assessment cohorts, WTCS liberal arts students who enrolled in the UWS from 1995-96 to 2000-01 as degree-seeking students had a six-year graduation rate of 46 percent, compared to 32 percent for all degree-seeking students in the cohort who enrolled in the UWS from 1995-96 to 2000-01. See Appendix G for details.

The average first year GPA for WTCS liberal arts students varied from 2.6 to 2.8 (Figure 25). In general, WTCS liberal arts students had a comparable average first year GPA with students in the overall assessment group. See Appendix H for details.

Figure 25
Average First Year GPA for WTCS/UWS Assessment Cohorts
WTCS Liberal Arts Students
by Initial UWS Enrollment Year



SUMMARY

The 2007 WTCS/UWS Program Assessment Study identifies 49,181 students who were enrolled in applied associate degree, liberal arts, or technical diploma courses at a WTCS district in fiscal years 1994-95 through 2004-05 and concurrently or subsequently enrolled at a UW institution. The majority of students initially enrolled at a UW institution in the year directly following their last WTCS year.

Of the students enrolled in a specific WTCS program, students in applied associate degree programs formed the largest group (14,455), followed by students in liberal arts programs (6,625) and students in technical diploma programs (5,977). While the applied associate degree and technical diploma groups increased over the last several years, the number of students, who were enrolled in liberal arts programs offered at Madison, Milwaukee, and Nicolet Area Technical Colleges and then came to the UWS, decreased slightly. There has also been a significant increase in students who attended a WTCS district and later a UW institution, but were not enrolled in a specific WTCS program (22,124 or 45% of the cohort).

A growing proportion of students in the study group entered the UWS as freshmen. The percentage of freshmen in the cohort increased from 49 percent in 1995-96 to 62 percent in 2005-06. The proportion of students entering at the sophomore level decreased from 18 percent in 1995-96 to 13 percent in 2005-06 while the proportion of students entering as upperclassmen (juniors or seniors) decreased from 11 percent to 9 percent.

Almost half of students (46%) coming to the UWS after attending a WTCS district entered as transfer students. Almost one third (32%) of students in the cohort were new, degree-seeking students and one sixth (17%) of students initially enrolled as special (non degree-seeking) students. New, degree-seeking students may receive credit for their prior coursework later in their UW enrollment if a transfer credit evaluation is requested. Since students who enroll as specials are not degree-seeking, their prior coursework is usually not evaluated unless they become degree-seeking students.

Students in the study group who entered the UWS as sophomores or as upperclassmen had similar second year retention rates, 78 percent and 80 percent, respectively; higher than for those who entered as freshmen (70%). The average first year GPA for the overall group was between 2.7 and 2.8 on a 4.0 scale.

The nursing, early childhood education, information technology (IT), marketing, criminal justice, accounting, and engineering technology applied associate degree programs and the liberal arts programs were selected for additional analysis. For students in these programs who enrolled in the UWS, UWS enrollment, types of UWS majors that they entered, second year retention rates, six-year graduation rates, and average first year GPA were reported. This information should aid in the evaluation of current program-to-program articulation agreements and future revisions to or expansions of the agreements.

The 2007 WTCS/UWS Program Assessment Study included students who were enrolled at a WTCS district and subsequently enrolled at a UW institution. It identified both the originating WTCS program and the subsequent UWS major in which the students enrolled, and provided academic outcome information for participating students. Transfer for some of these students may have been facilitated by program-to-program articulation agreements. This study should contribute to the broader goal of ensuring that students utilizing these agreements have the requisite knowledge from their WTCS coursework to succeed in their UWS majors. Future reports may expand on this analysis as well as focus on areas for new WTCS/UWS initiatives.

APPENDICES

**Appendix A
WTCS/UWS Assessment Cohorts
by Initial UWS Enrollment Year and WTCS District**

WTCS District	UWS Cohort Year											Total	
	95-96	96-97	97-98	98-99	99-00	00-01	01-02	02-03	03-04	04-05	05-06	#	%
Blackhawk	39	67	62	89	96	120	109	126	115	129	126	1,078	2%
Chippewa Valley	69	128	141	188	223	254	305	307	341	374	325	2,655	5%
Fox Valley	151	183	193	283	360	352	409	479	446	464	432	3,752	8%
Gateway	135	124	197	229	249	291	285	354	393	406	362	3,025	6%
Lakeshore	60	69	96	101	126	131	158	159	161	182	244	1,487	3%
Madison	549	643	622	726	717	854	871	914	866	945	850	8,557	17%
Mid-State	66	95	138	142	174	217	248	255	278	260	241	2,114	4%
Milwaukee	691	834	914	1,004	1,055	899	924	833	873	942	752	9,721	20%
Moraine Park	57	94	131	147	163	185	233	264	279	274	271	2,098	4%
Nicolet	88	94	98	108	128	134	145	142	146	117	143	1,343	3%
Northcentral	75	105	114	180	196	235	269	276	282	308	286	2,326	5%
Northeast	97	152	168	222	249	291	376	338	437	475	518	3,323	7%
Southwest	28	50	60	93	62	82	101	90	91	124	156	937	2%
Waukesha	94	161	170	215	214	214	258	225	283	272	285	2,391	5%
Western	73	146	174	214	225	252	222	239	249	270	293	2,357	5%
WI Indianhead	56	100	84	119	142	159	256	268	293	302	238	2,017	4%
Total	2,328	3,045	3,362	4,060	4,379	4,670	5,169	5,269	5,533	5,844	5,522	49,181	100%

Appendix B
WTCS/UWS Assessment Cohorts
by Initial UWS Enrollment Year, WTCS Program Type and Degree Completion Status

UWS Cohort Year		Applied Associate Degree			Liberal Arts			Technical Diploma			Undeclared	Total		
		Grad	No Grad	Total	Grad	No Grad	Total	Grad	No Grad	Total	No Grad	Grad	No Grad	Total
95-96	#	138	442	580	46	571	617	117	71	188	943	301	2,027	2,328
	%	24%	76%	100%	7%	93%	100%	62%	38%	100%	100%	13%	87%	100%
96-97	#	204	681	885	59	605	664	178	84	262	1,234	441	2,604	3,045
	%	23%	77%	100%	9%	91%	100%	68%	32%	100%	100%	14%	86%	100%
97-98	#	251	702	953	66	600	666	241	121	362	1,381	558	2,804	3,362
	%	26%	74%	100%	10%	90%	100%	67%	33%	100%	100%	17%	83%	100%
98-99	#	310	802	1,112	67	588	655	302	141	443	1,850	679	3,381	4,060
	%	28%	72%	100%	10%	90%	100%	68%	32%	100%	100%	17%	83%	100%
99-00	#	341	934	1,275	63	526	589	318	142	460	2,055	722	3,657	4,379
	%	27%	73%	100%	11%	89%	100%	69%	31%	100%	100%	16%	84%	100%
00-01	#	396	917	1,313	78	521	599	356	180	536	2,222	830	3,840	4,670
	%	30%	70%	100%	13%	87%	100%	66%	34%	100%	100%	18%	82%	100%
01-02	#	443	1,117	1,560	66	571	637	404	193	597	2,375	913	4,256	5,169
	%	28%	72%	100%	10%	90%	100%	68%	32%	100%	100%	18%	82%	100%
02-03	#	461	1,088	1,549	72	533	605	495	191	686	2,429	1,028	4,241	5,269
	%	30%	70%	100%	12%	88%	100%	72%	28%	100%	100%	20%	80%	100%
03-04	#	462	1,251	1,713	65	489	554	502	183	685	2,581	1,029	4,504	5,533
	%	27%	73%	100%	12%	88%	100%	73%	27%	100%	100%	19%	81%	100%
04-05	#	483	1,332	1,815	71	450	521	646	199	845	2,663	1,200	4,644	5,844
	%	27%	73%	100%	14%	86%	100%	76%	24%	100%	100%	21%	79%	100%
05-06	#	469	1,231	1,700	55	463	518	692	221	913	2,391	1,216	4,306	5,522
	%	28%	72%	100%	11%	89%	100%	76%	24%	100%	100%	22%	78%	100%
Total	#	3,958	10,497	14,455	708	5,917	6,625	4,251	1,726	5,977	22,124	8,917	40,264	49,181
	%	27%	73%	100%	11%	89%	100%	71%	29%	100%	100%	18%	82%	100%

Appendix C
WTCS/UWS Assessment Cohorts
by Initial UWS Enrollment Year and Student Classification

UWS Cohort Year		Student Classification				Total
		Freshman	Sophomore	Upperclass	Special	
1995-96	#	1,131	417	258	522	2,328
	%	49%	18%	11%	22%	100%
1996-97	#	1,550	476	318	701	3,045
	%	51%	16%	10%	23%	100%
1997-98	#	1,818	476	331	737	3,362
	%	54%	14%	10%	22%	100%
1998-99	#	2,328	529	409	794	4,060
	%	57%	13%	10%	20%	100%
1999-00	#	2,586	545	349	899	4,379
	%	59%	12%	8%	21%	100%
2000-01	#	2,723	549	396	1,002	4,670
	%	58%	12%	8%	21%	100%
2001-02	#	3,071	576	455	1,067	5,169
	%	59%	11%	9%	21%	100%
2002-03	#	3,181	615	431	1,042	5,269
	%	60%	12%	8%	20%	100%
2003-04	#	3,464	645	495	929	5,533
	%	63%	12%	9%	17%	100%
2004-05	#	3,668	697	497	982	5,844
	%	63%	12%	9%	17%	100%
2005-06	#	3,409	721	511	881	5,522
	%	62%	13%	9%	16%	100%
Total	#	28,929	6,246	4,450	9,556	49,181
	%	59%	13%	9%	19%	100%

Appendix D
WTCS/UWS Assessment Cohorts
by Initial UWS Entrance Status and Institution

UW Institution	Transfer		New Degree-Seeking		New Special		Re-Entry/Continuing		Total
	#	%	#	%	#	%	#	%	
UW-Madison	2,329	47%	1,368	28%	1,031	21%	233	5%	4,961
UW-Milwaukee	5,052	51%	1,957	20%	2,075	21%	801	8%	9,885
UW-Eau Claire	746	36%	929	45%	317	15%	61	3%	2,053
UW-Green Bay	1,141	53%	708	33%	226	10%	90	4%	2,165
UW-La Crosse	1,305	56%	720	31%	280	12%	41	2%	2,346
UW-Oshkosh	1,383	46%	1,244	42%	228	8%	123	4%	2,978
UW-Parkside	1,104	46%	693	29%	486	20%	135	6%	2,418
UW-Platteville	671	37%	682	38%	294	16%	159	9%	1,806
UW-River Falls	252	33%	397	52%	93	12%	16	2%	758
UW-Stevens Point	1,321	53%	679	27%	402	16%	99	4%	2,501
UW-Stout	2,171	66%	659	20%	177	5%	291	9%	3,298
UW-Superior	574	61%	222	24%	74	8%	73	8%	943
UW-Whitewater	1,437	56%	840	33%	187	7%	94	4%	2,558
UW Colleges	3,084	29%	4,666	44%	2,307	22%	454	4%	10,511
Total	22,570	46%	15,764	32%	8,177	17%	2,670	5%	49,181

Note:

"**Transfers**" include (1) new students with transfer work, who had not previously enrolled at the UW institution and (2) re-entry students, who re-enrolled at the UW with transfer work.

"**New Degree-Seeking**" students were new to the UW campus, initially enrolling with no transfer work.

"**New Specials**" may have enrolled at the UW with no intent of seeking a degree.

"**Re-entry**" students re-enrolled at the UW institution with no transfer work, and "**Continuing**" students were enrolled at both a WTCS and UW institution during the same year.

Appendix E
Second Year Retention for WTCS/UWS Assessment Cohorts
by Initial UWS Enrollment Year and Student Classification

UWS Cohort Year	Student Classification	# in Cohort	Retained to 2nd Year	
			#	%
1995-96	Freshman	1,131	767	68%
	Sophomore	417	324	78%
	Upperclass	258	197	76%
	Special	522	145	28%
	Total	2,328	1,433	62%
1996-97	Freshman	1,550	1,054	68%
	Sophomore	476	370	78%
	Upperclass	318	258	81%
	Special	701	210	30%
	Total	3,045	1,892	62%
1997-98	Freshman	1,818	1,289	71%
	Sophomore	476	383	80%
	Upperclass	331	269	81%
	Special	737	236	32%
	Total	3,362	2,177	65%
1998-99	Freshman	2,328	1,623	70%
	Sophomore	529	408	77%
	Upperclass	409	320	78%
	Special	794	245	31%
	Total	4,060	2,596	64%
1999-00	Freshman	2,586	1,801	70%
	Sophomore	545	419	77%
	Upperclass	349	262	75%
	Special	899	282	31%
	Total	4,379	2,764	63%
2000-01	Freshman	2,723	1,913	70%
	Sophomore	549	432	79%
	Upperclass	396	310	78%
	Special	1,002	297	30%
	Total	4,670	2,952	63%
2001-02	Freshman	3,071	2,149	70%
	Sophomore	576	435	76%
	Upperclass	455	379	83%
	Special	1,067	365	34%
	Total	5,169	3,328	64%
2002-03	Freshman	3,181	2,285	72%
	Sophomore	615	492	80%
	Upperclass	431	342	79%
	Special	1,042	327	31%
	Total	5,269	3,446	65%
2003-04	Freshman	3,464	2,470	71%
	Sophomore	645	509	79%
	Upperclass	495	389	79%
	Special	929	298	32%
	Total	5,533	3,666	66%
2004-05	Freshman	3,668	2,607	71%
	Sophomore	697	554	79%
	Upperclass	497	409	82%
	Special	982	303	31%
	Total	5,844	3,873	66%
Overall	Freshman	25,520	17,958	70%
	Sophomore	5,525	4,326	78%
	Upperclass	3,939	3,135	80%
	Special	8,675	2,708	31%
	Total	43,659	28,127	64%

Appendix F
Second Year Retention for WTCS/UWS Assessment Cohorts
for Specific Program Groups by Initial UWS Student Classification

WTCS Program Type	Student Classification	# in Cohort	Retained to 2nd Year		# in Cohort	Retained to 2nd Year	
			#	%		#	%
Nursing		All WTCS Nursing AAD Students			WTCS Nursing AAD Students in UWS Health-Related Majors		
	Freshman	516	307	59%	128	96	75%
	Sophomore	164	101	62%	90	58	64%
	Upperclass	213	149	70%	182	125	69%
	Special	438	128	29%	18	15	83%
	Total	1,331	685	51%	418	294	70%
Early Child Education		All WTCS Early Childhood Education Students			WTCS Early Childhood Education Students in UWS Education Majors		
	Freshman	241	144	60%	81	53	65%
	Sophomore	75	51	68%	42	29	69%
	Upperclass	39	29	74%	31	23	74%
	Special	116	31	27%	4	2	50%
	Total	471	255	54%	158	107	68%
Information Technology (IT)		All WTCS IT Students			WTCS IT Students in UWS Business & Math, Computer & Info Sciences Majors		
	Freshman	920	572	62%	275	192	70%
	Sophomore	175	124	71%	79	57	72%
	Upperclass	120	91	76%	66	55	83%
	Special	271	85	31%	15	9	60%
	Total	1,486	872	59%	435	313	72%
Marketing		All WTCS Marketing Students			WTCS Marketing Students in UWS Business & Marketing Ed Majors		
	Freshman	892	601	67%	220	151	69%
	Sophomore	178	144	81%	99	85	86%
	Upperclass	136	115	85%	108	92	85%
	Special	169	53	31%	8	7	88%
	Total	1,375	913	66%	435	335	77%
Criminal Justice		All WTCS Criminal Justice Students			WTCS Criminal Justice Students in UWS Public Administration/Legal Services Majors		
	Freshman	749	468	62%	122	86	70%
	Sophomore	146	100	68%	47	33	70%
	Upperclass	68	49	72%	9	8	89%
	Special	127	32	25%	3	2	67%
	Total	1,090	649	60%	181	129	71%
Accounting		All WTCS Accounting Students			WTCS Accounting Students in UWS Business Majors		
	Freshman	598	387	65%	206	149	72%
	Sophomore	131	90	69%	69	55	80%
	Upperclass	72	55	76%	43	33	77%
	Special	149	49	33%	11	8	73%
	Total	950	581	61%	329	245	74%
Engineering Technology		All WTCS Engineering Technology Students			WTCS Engineering Technology Students in UWS Engineering & Architecture Majors		
	Freshman	929	615	66%	88	74	84%
	Sophomore	198	147	74%	63	50	79%
	Upperclass	207	170	82%	83	67	81%
	Special	297	102	34%	6	3	50%
	Total	1,631	1,034	63%	240	194	81%
Liberal Arts		All WTCS Liberal Arts Students					
	Freshman	2,011	1,406	70%			
	Sophomore	2,496	2,085	84%			
	Upperclass	1,532	1,321	86%			
	Special	586	218	37%			
	Total	6,625	5,030	76%			

Appendix G
Six-Year Graduation Rate
for WTCS/UWS Assessment Cohorts*
for Specific Program Groups

WTCS Program Type		# in Cohort	Graduated in 6 Years	
			#	%
Nursing	All WTCS Nursing AAD Students	334	70	21%
	WTCS Nursing AAD Students in UWS Health-Related Majors	132	49	37%
Early Childhood Education	All WTCS Early Childhood Education Students	130	33	25%
	WTCS Early Childhood Education Students in UWS Education Majors	49	19	39%
Information Technology (IT)	All WTCS Information Technology (IT) Students	417	78	19%
	WTCS IT Students in UWS Business or Math, Computer & Information Sciences Majors	120	40	33%
Marketing	All WTCS Marketing Students	503	138	27%
	WTCS Marketing Students in UWS Business & Marketing Ed Majors	167	76	46%
Criminal Justice	All WTCS Criminal Justice Students	428	83	19%
	WTCS Criminal Justice Students in UWS Public Administration/Legal Services Majors	63	28	44%
Accounting	All WTCS Accounting Students	372	78	21%
	WTCS Accounting Students in UWS Business Majors	139	50	36%
Engineering Technology	All WTCS Engineering Technology Students	637	132	21%
	WTCS Engineering Technology Students in UWS Engineering & Architecture Majors	104	49	47%
Liberal Arts		3,472	1,600	46%
Overall		17,189	5,433	32%

*Including 1995-96 to 2000-01 degree-seeking students only.

Appendix H
Average First Year GPA for WTCS/UWS Assessment Cohorts
for Specific Program Groups by Initial UWS Enrollment

WTCS Program Type		95-96	96-97	97-98	98-99	99-00	00-01	01-02	02-03	03-04	04-05	05-06
Nursing	# in Cohort	36	90	83	85	92	123	123	160	166	177	196
	First Year GPA	2.9	3.0	3.1	2.9	3.1	2.8	3.0	2.9	2.9	2.9	3.0
Early Childhood Education	# in Cohort	9	18	20	35	43	41	56	46	67	67	69
	First Year GPA	2.9	2.6	2.7	2.5	2.6	2.7	3.1	2.6	2.8	2.7	2.7
Information Technology (IT)	# in Cohort	35	53	80	102	109	146	192	213	199	196	161
	First Year GPA	2.9	2.8	2.7	2.7	2.4	2.9	2.8	2.9	2.7	2.6	2.6
Marketing	# in Cohort	53	96	80	109	124	118	171	131	154	173	166
	First Year GPA	2.5	2.5	2.7	2.6	2.7	2.6	2.7	2.6	2.6	2.6	2.6
Criminal Justice	# in Cohort	54	69	89	82	104	93	109	116	125	114	135
	First Year GPA	2.6	2.3	2.5	2.5	2.4	2.5	2.7	2.6	2.5	2.6	2.4
Accounting	# in Cohort	46	81	70	76	75	85	95	103	90	125	104
	First Year GPA	3.0	2.6	2.9	2.7	2.5	2.8	2.9	2.8	2.8	2.6	2.7
Engineering Technology	# in Cohort	87	105	121	159	167	160	166	170	182	183	131
	First Year GPA	2.2	2.7	2.6	2.8	2.7	2.7	2.9	2.9	2.9	2.9	2.8
Liberal Arts	# in Cohort	617	664	666	655	589	599	637	605	554	521	518
	First Year GPA	2.6	2.7	2.7	2.8	2.7	2.8	2.8	2.8	2.7	2.7	2.7
Overall	# in Cohort	2,328	3,045	3,362	4,060	4,379	4,670	5,169	5,269	5,533	5,844	5,522
	First Year GPA	2.7	2.7	2.8	2.8	2.8	2.8	2.8	2.8	2.8	2.7	2.7

Appendix I
WTCS/UWS Assessment Cohorts
Students in WTCS Nursing Applied Associate Degree Programs
Enrollment by WTCS District and UWS Institution

	MSN	MIL	EAU	GBY	LAC	OSH	PKS	PLT	RVF	STP	STO	SUP	WTW	UWC	TOTAL
Blackhawk	3	3	1			1	1	1		1	1		6	35	53
Chippewa Valley			44	1	3				5	3	10		1	14	81
Fox Valley	2			28		57				7				32	126
Gateway	1	29	1	2		3	63	1					4	8	112
Lakeshore	1	5		19		6	1			1				66	99
Madison	41	6		1	1	5							2	13	69
Mid-State	1			1		11				24				14	51
Milwaukee	2	110	1	2		3	5						2	15	140
Moraine Park	3	10		1		9		1		1	1			51	77
Nicolet	2	4	5	25	2	2		1		8	2	5	1	6	63
Northcentral	1	3		7	1	25		1		19		1		42	100
Northeast WI		2	1	72		3				14				18	110
Southwest WI	2			1				11		2				11	27
Waukesha	1	27			1		3			1	1		4	54	92
Western	1	3	2	1	47	5	1	2		4	2		1	7	76
WI Indianhead		1	9	5		2	1		5	2	5	14		11	55
* Overall Total	61	203	64	166	55	132	75	18	10	87	22	20	21	397	1,331
* Major-Specific Total	49	85	32	134	1	113	0	0	0	1	3	0	0	0	418

Note: Shaded areas indicate WTCS/UWS institutions with transfer agreements in nursing.

* Overall Total includes all WTCS Nursing Applied Associate Degree students who enrolled in the UWS; Major-Specific Total includes only WTCS Nursing Applied Associate Degree students enrolled in UWS Health-Related majors.

Appendix J
WTCS/UWS Program-to-Program Transfer Agreements
for WTCS Nursing Applied Associate Degree Programs

	MSN	MIL	EAU	GBY	LAC	OSH	PKS	PLT	RVF	STP	STO	SUP	WTW	UWC
Blackhawk	N1	N1	N1	N1		N1								
Chippewa Valley	N1	N1	N1	N1		N1								
Fox Valley	N1	N1	N1	N1		N1								
Gateway	N1	N1	N1	N1		N1	N2							
Lakeshore	N1	N1	N1	N1		N1								
Madison	N1	N1	N1	N1		N1								
Mid-State	N1	N1	N1	N1		N1								
Milwaukee	N1	N1	N1	N1		N1								
Moraine Park	N1	N1	N1	N1		N1								
Nicolet	N1	N1	N1	N1		N1								
Northcentral	N1	N1	N1	N1		N1								
Northeast WI	N1	N1	N1	N1		N1								
Southwest WI	N1	N1	N1	N1		N1								
Waukesha	N1	N1	N1	N1		N1								
Western	N1	N1	N1	N1		N1								
WI Indianhead	N1	N1	N1	N1		N1								

N1 = WTCS Nursing Applied Associate Degree to UWS Collaborative Nursing (2001)

N2 = WTCS Nursing Applied Associate Degree to UW-Parkside and UW-Milwaukee Consortial Nursing Program (2000)

Note: In addition to program-to-program agreements, UW institutions may also transfer specific WTCS nursing courses regardless of the student's program or major.

Appendix K
WTCS/UWS Assessment Cohorts
Students in WTCS Early Childhood Education Programs
Enrollment by WTCS District and UWS Institution

	MSN	MIL	EAU	GBY	LAC	OSH	PKS	PLT	RVF	STP	STO	SUP	WTW	UWC	TOTAL
Blackhawk	1	1						1			1		10	2	16
Chippewa Valley															
Fox Valley		2		5		21	18			1	12	1		27	69
Gateway		8								1			1	1	29
Lakeshore		1													1
Madison	15	4	1					5	1		3		5	2	36
Mid-State		2				1				6	1		1	2	13
Milwaukee		62						1			2	1	1	5	72
Moraine Park		6		1	1	2						1	1	13	25
Nicolet			1			1		1		15	3	17		1	39
Northcentral												1		2	3
Northeast WI		2													2
Southwest WI	1	1			2			16				1		2	23
Waukesha		19		1		1		1		1	1		7	20	51
Western			2		24		1		1		5			3	36
WI Indianhead								2	3		26	21		4	56
* Overall Total	17	108	4	7	27	26	19	27	5	24	54	43	26	84	471
* Major-Specific Total	2	33	3	1	13	10	0	12	0	6	34	23	21	0	158

Note: Shaded areas indicate WTCS/UWS institutions with transfer agreements in early childhood education.

* Overall Total includes all WTCS Early Childhood Education students who enrolled in the UWS; Major-Specific Total includes only WTCS Early Childhood Education students enrolled in UWS Education majors.

Appendix L
WTCS/UWS Program-to-Program Transfer Agreements
for WTCS Early Childhood Education Program

	MSN	MIL	EAU	GBY	LAC	OSH	PKS	PLT	RVF	STP	STO	SUP	WTW	UWC
Blackhawk		E1				E3	E4				E6		E7	
Chippewa Valley											E6			
Fox Valley		E1				E3	E4				E6		E7	
Gateway		E1				E3	E4				E6		E7	
Lakeshore		E1				E3	E4				E6		E7	
Madison		E1				E3	E4	E5			E6		E7	
Mid-State		E1				E3	E4				E6		E7	
Milwaukee		E1				E3	E4				E6		E7	
Moraine Park		E1				E3	E4				E6		E7	
Nicolet		E1				E3	E4				E6		E7	
Northcentral		E1				E3	E4				E6		E7	
Northeast WI		E1		E2		E3	E4				E6		E7	
Southwest WI		E1				E3	E4	E5			E6		E7	
Waukesha		E1				E3	E4				E6		E7	
Western		E1				E3	E4				E6		E7	
WI Indianhead		E1				E3	E4				E6		E7	

E1 = WTCS Early Childhood Education to UW-Milwaukee Early Childhood/Community Education (2001)

E2 = WTCS Early Childhood Education to UW-Green Bay Education/Early Childhood or Midchildhood License Program (2005)

E3 = WTCS Early Childhood Education to UW-Oshkosh (PK-3/PK-6 Certification) (2001)

E4 = WTCS Early Childhood Education to UW-Parkside Early Childhood Education Certification (2001)

E5 = WTCS Early Childhood Education to UW-Platteville Elementary Education/Early Childhood (2000)

E6 = WTCS Early Childhood Education to UW-Stout Early Childhood Education (2003, 2006)

E7 = WTCS Early Childhood Education to UW-Whitewater Elementary Education (PK-6 Certification) (2001)

Note: In addition to program-to-program agreements, UW institutions may also transfer specific WTCS early childhood education courses regardless of the student's program or major.

Appendix M
WTCS/UWS Assessment Cohorts
Students in WTCS Information Technology (IT) Programs
Enrollment by WTCS District and UWS Institution

	MSN	MIL	EAU	GBY	LAC	OSH	PKS	PLT	RVF	STP	STO	SUP	WTW	UWC	TOTAL
Blackhawk								3	1	1			4	29	38
Chippewa Valley		2	40	1	3			1	8	1	71	2		6	135
Fox Valley	2	9		6	1	67	2	3		11	5		1	57	164
Gateway	1	5	1				97	4		1		1	13	7	130
Lakeshore		3		3	1			1			1			44	53
Madison	38	7	3	1	2	5	5	12		5	4	1	22	13	118
Mid-State	1	1	3	3		1			1	42			1	16	69
Milwaukee	1	215	2	2	2	2	13	4		1	5		10	20	277
Moraine Park	1	5		1		11		2			6			26	52
Nicolet		1			1	3		2		4	1	2	1	2	17
Northcentral		4	5		1	2	1			16	9	1	1	35	75
Northeast WI		1		27		7		2		2	2	1		17	59
Southwest WI					2			22		1	1			17	43
Waukesha	1	27		1			3	1		4	1		8	43	89
Western	1	4	2		66			4	1	1	5	2	1	7	94
WI Indianhead	1	1	3					1	8	2	12	33		12	73
* Overall Total	47	285	59	45	79	98	121	62	19	92	123	43	62	351	1,486
* Major-Specific Total	3	119	18	11	29	34	35	23	8	40	67	15	33	0	435

Note: Shaded areas indicate WTCS/UWS institutions with transfer agreements in Information Technology (IT).

* Overall Total includes all WTCS Information Technology (IT) students who enrolled in the UWS; Major-Specific Total includes only WTCS IT students enrolled in UWS Business or Math, Computer & Information Sciences majors.

Appendix N
WTCS/UWS Program-to-Program Transfer Agreements
for WTCS Information Technology (IT) Programs

	MSN	MIL	EAU	GBY	LAC	OSH	PKS	PLT	RVF	STP	STO	SUP	WTW	UWC
Blackhawk								C5						
Chippewa Valley								C5			C7			
Fox Valley		C1				C3		C5			C7			
Gateway		C1					C4	C5						
Lakeshore														
Madison								C5						
Mid-State								C5						
Milwaukee		C1						C5						
Moraine Park		C1				C3		C5						
Nicolet								C5						
Northcentral								C5			C7			
Northeast WI								C5						
Southwest WI								C5						
Waukesha		C1												
Western					C2			C5			C7			
WI Indianhead								C5	C6			C8		

C1 = WTCS Information Technology (IT) to UW-Milwaukee Information Resources (2004, 2006)

C2 = WTCS Information Technology (IT) to UW-La Crosse Information Systems (2006)

C3 = WTCS Information Technology (IT) to UW-Oshkosh Comp Science (1999) & BLS Organizational Admin (2006, 2007)

C4 = WTCS Information Technology (IT) to UW-Parkside Business Management (2002)

C5 = WTCS Information Technology (IT) to UW-Platteville Business (1993, 1998, 1999, 2001, 2003) & Agriculture (2002) & Biological Science (2002) & Computer Information Systems (2003)

C6 = WTCS Information Technology (IT) to UW-River Falls Computer Information Systems (2002) & Business (2002)

C7 = WTCS Information Technology (IT) to UW-Stout Computer Information Systems (1997, 2002, 2006) & Telecommunication Systems (2002) & Information Sciences (2006)

C8 = WTCS Information Technology (IT) to UW-Superior Computer Information Systems (1997)

Note: In addition to program-to-program agreements, UW institutions may also transfer specific WTCS information technology courses regardless of the student's program or major.

Appendix O
WTCS/UWS Assessment Cohorts
Students in WTCS Marketing Programs
Enrollment by WTCS District and UWS Institution

	MSN	MIL	EAU	GBY	LAC	OSH	PKS	PLT	RVF	STP	STO	SUP	WTW	UWC	TOTAL
Blackhawk		2				2		2			3		6	20	35
Chippewa Valley	1	3	46	1				2	3	2	139	2		8	207
Fox Valley		8	2	4		43	1	5		5	18	1		32	119
Gateway		7			2	2	59	1		1	6		19	3	100
Lakeshore	1	2		3		3				2	6			53	70
Madison	16	14	1	1	4	3	1	13		1	12		18	15	99
Mid-State			1			2	1			27	1	1		7	40
Milwaukee	1	60			1	3	6	1		1	4	1	3	7	88
Moraine Park	1	1		1		6		2			3		1	27	42
Nicolet		1	1					1		2		2			7
Northcentral		3			1	1	1	1	1	18	24	1		30	81
Northeast WI	1	9	1	71	1	15	2		1	4	16			12	133
Southwest WI								11			2			3	16
Waukesha	1	34				6	1		1	1	2		9	52	107
Western		2			129	1	1	3		4	26	1	1	8	176
WI Indianhead			1						5		12	25	1	11	55
* Overall Total	22	146	53	81	138	87	73	42	11	68	274	34	58	288	1,375
* Major-Specific Total	1	44	7	9	34	31	16	21	3	15	207	16	31	0	435

Note: Shaded areas indicate UWS/WTCS institutions with transfer agreements in marketing.

* Overall Total includes all WTCS Marketing students who enrolled in the UWS; Major-Specific Total includes only WTCS Marketing students enrolled in UWS Business or Marketing Education majors.

Appendix P
WTCS/UWS Program-to-Program Transfer Agreements
for WTCS Marketing Programs

	MSN	MIL	EAU	GBY	LAC	OSH	PKS	PLT	RVF	STP	STO	SUP	WTW	UWC
Blackhawk								M5					M7	
Chippewa Valley								M5			M6		M7	
Fox Valley						M3		M5			M6		M7	
Gateway							M4	M5			M6		M7	
Lakeshore											M6		M7	
Madison								M5			M6		M7	
Mid-State								M5					M7	
Milwaukee		M1						M5					M7	
Moraine Park								M5			M6		M7	
Nicolet								M5					M7	
Northcentral								M5					M7	
Northeast WI								M5					M7	
Southwest WI								M5					M7	
Waukesha								M5			M6		M7	
Western					M2			M5			M6		M7	
WI Indianhead											M6		M7	

M1 = WTCS Marketing to UW-Milwaukee Information Resources (1999)

M2 = WTCS Marketing to UW-La Crosse Business Administration (2006)

M3 = WTCS Marketing to UW-Oshkosh Management (2006)

M4 = WTCS Marketing to UW-Parkside Business (2002)

M5 = WTCS Marketing to UW-Platteville Business (1998-2001) & Biological Science (2002) & Agriculture (2002)

M6 = WTCS Marketing to UW-Stout Marketing & Business Education (1991-2004, 2006)

M7 = WTCS Marketing to UW-Whitewater Business & Economics (1995)

Note: In addition to program-to-program agreements, UW institutions may also transfer specific WTCS marketing courses regardless of the student's program or major.

Appendix Q
WTCS/UWS Assessment Cohorts
Students in WTCS Criminal Justice Programs
Enrollment by WTCS District and UWS Institution

	MSN	MIL	EAU	GBY	LAC	OSH	PKS	PLT	RVF	STP	STO	SUP	WTW	UWC	TOTAL
Blackhawk	1	1				2	1	3		1			14	30	53
Chippewa Valley			26	1	3	1	1	1	3	1	50	5	1	10	103
Fox Valley	1	5	1	4	1	43	1	3	2	5	1		1	28	96
Gateway	1	12				4	78	3		1	1		10	6	116
Lakeshore		3			1	1		1						16	22
Madison	9	14	2		3	5	1	15		5	1	2	17	14	88
Mid-State			1			1				17	5			10	34
Milwaukee	1	136			1	4	14	2		1		1	3	8	171
Moraine Park		1				7					1			25	34
Nicolet		2	3	1		4	1	4	1	1		4		4	25
Northcentral			1	2	1	3		1	1	6				22	37
Northeast WI		8	1	73	1	14	4	3		3				16	123
Southwest WI						1		4						1	6
Waukesha		33			1		3		1		1		8	41	88
Western			1	1	31	1	1	6		3	5			1	50
WI Indianhead			2						1		10	17		14	44
* Overall Total	13	215	38	82	43	91	105	46	9	44	75	29	54	246	1,090
* Major-Specific Total	1	68	14	7	1	40	25	19	1	0	0	2	3	0	181

Note: Shaded areas indicate WTCS/UWS institutions with transfer agreements in criminal justice.

Overall Total includes all WTCS Criminal Justice students who enrolled in the UWS; Major-Specific Total includes only WTCS Criminal Justice students enrolled in UWS Public Administration/Legal Services majors.

Appendix R
WTCS/UWS Program-to-Program Transfer Agreements
for WTCS Criminal Justice Programs

	MSN	MIL	EAU	GBY	LAC	OSH	PKS	PLT	RVF	STP	STO	SUP	WTW	UWC
Blackhawk								P5		P6				
Chippewa Valley										P6	P7			
Fox Valley				P2		P3		P5		P6				
Gateway							P4	P5		P6			P8	
Lakeshore								P5		P6				
Madison		P1						P5		P6			P8	
Mid-State								P5		P6				
Milwaukee		P1						P5		P6			P8	
Moraine Park														
Nicolet										P6				
Northcentral								P5		P6				
Northeast WI				P2			P4			P6				
Southwest WI										P6				
Waukesha		P1						P5		P6			P8	
Western										P6				
WI Indianhead										P6				

P1 = WTCS Criminal Justice to UW-Milwaukee Criminal Justice (2000, 2003, 2004)

P2 = WTCS Criminal Justice to UW-Green Bay Interdisciplinary Studies (2006)

P3 = WTCS Criminal Justice to UW-Oshkosh Public Administration (2002)

P4 = WTCS Criminal Justice to UW-Parkside Criminal Justice (2000-2001)

P5 = WTCS Criminal Justice to UW-Platteville Criminal Justice (2006, 2007)

P6 = WTCS Criminal Justice to UW-Stevens Point Environmental Law Enforcement (1995)

P7 = WTCS Criminal Justice to UW-Stout Psychology (2001) & Voc-Rehab (Criminal Justice-Certification) (2002)

P8 = WTCS Criminal Justice to UW-Whitewater Sociology Major-Criminal Justice Emphasis (2002, 2005)

Note: In addition to program-to-program agreements, UW institutions may also transfer specific WTCS criminal justice courses regardless of the student's program or major.

Appendix S
WTCS/UWS Assessment Cohorts
Students in WTCS Accounting Programs
Enrollment by WTCS District and UWS Institution

	MSN	MIL	EAU	GBY	LAC	OSH	PKS	PLT	RVF	STP	STO	SUP	WTW	UWC	TOTAL
Blackhawk	1	2					1	5					7	24	40
Chippewa Valley			35		1			2	8	2	28	1		7	84
Fox Valley		1	1	1	2	20	1	1		4	1	1	1	14	48
Gateway		4			1	1	60	1		1			19	4	91
Lakeshore		1		1		2		1		2	1		1	20	29
Madison	24	6	3	1	2	4	1	17		2			24	26	110
Mid-State			1	2	1			2		34	1			7	48
Milwaukee		109		2		2	5	2		1	1		3	7	132
Moraine Park		1			1	7		2		1	1		4	22	39
Nicolet		1	1	1		1		1		3		3	1	1	13
Northcentral			1	1	1	1	1	4		8	2	2	1	26	48
Northeast WI	1	3	1	39		2		1	1	4	2		3	22	79
Southwest WI					2			8						4	14
Waukesha		18				1	2	1					5	20	47
Western	1	1	1	1	46	1		3	3	2	5		3	5	72
WI Indianhead								3	14		4	29		6	56
* Overall Total	27	147	44	49	57	42	71	54	26	64	46	36	72	215	950
* Major-Specific Total	3	60	20	6	33	18	25	46	13	21	29	15	40	0	329

Note: Shaded areas indicate WTCS/UWS institutions with transfer agreements in accounting.
Overall Total includes all WTCS Accounting students who enrolled in the UWS; Major-Specific Total includes only WTCS Accounting students enrolled in UWS Business majors.

Appendix T
WTCS/UWS Program-to-Program Transfer Agreements
for WTCS Accounting Programs

	MSN	MIL	EAU	GBY	LAC	OSH	PKS	PLT	RVF	STP	STO	SUP	WTW	UWC
Blackhawk								A3						
Chippewa Valley								A3	A4		A5			
Fox Valley								A3						
Gateway							A2	A3						
Lakeshore								A3						
Madison								A3						
Mid-State								A3						
Milwaukee								A3						
Moraine Park								A3						
Nicolet								A3						
Northcentral								A3						
Northeast WI								A3						
Southwest WI								A3						
Waukesha								A3						
Western					A1			A3						
WI Indianhead								A3	A4			A6		

A1 = WTCS Accounting to UW-La Crosse Business (2006)
A2 = WTCS Accounting to UW-Parkside Business (2002)
A3 = WTCS Accounting to UW-Platteville Business (1993-2003)
A4 = WTCS Accounting to UW-River Falls Business (1995, 2002)
A5 = WTCS Accounting to UW-Stout Business/Marketing (2001)
A6 = WTCS Accounting to UW-Superior Business (1997)
Note: In addition to program-to-program agreements, UW institutions may also transfer specific WTCS accounting courses regardless of the student's program or major.

Appendix U
WTCS/UWS Assessment Cohorts
Students in WTCS Engineering Technology Programs
Enrollment by WTCS District and UWS Institution

	MSN	MIL	EAU	GBY	LAC	OSH	PKS	PLT	RVF	STP	STO	SUP	WTW	UWC	TOTAL
Blackhawk		1			1	1		2			4		4	23	36
Chippewa Valley		2	34	1	2			2	3		84			2	130
Fox Valley		5	1	6	2	18	1	6		3	27	1		67	137
Gateway		12			1		58		1		3		5	6	86
Lakeshore	1	3	3	1		2		1			9			44	64
Madison	30	24	3	2	5	3	1	14	1	2	11	2	9	24	131
Mid-State	1	4			2	4	1	4	2	28	5			18	69
Milwaukee	5	178		1	2	6	11	3		3	16	2	3	21	251
Moraine Park	3	14	1	1	1	14	2	8	1	1	15			66	127
Nicolet					1										1
Northcentral	1	5	2		2	3	2	1	2	19	43	1		72	153
Northeast WI	2	10		36		10		2		8	16		1	30	115
Southwest WI	2				1			18			2		1	9	33
Waukesha	2	74	1	1		3	2	4		1	13		5	67	173
Western	1	5	1		36			7		1	10		1	7	69
WI Indianhead		3	2				1	1	7		24	7		11	56
* Overall Total	48	340	48	49	56	64	79	73	17	66	282	13	29	467	1,631
* Major-Specific Total	8	110	0	0	0	0	1	21	0	0	100	0	0	0	240

Note: Shaded areas indicate WTCS/UWS institutions with transfer agreements in engineering/engineering technology.
Overall Total includes all WTCS Engineering Technology students who enrolled in the UWS; Major-Specific Total includes only WTCS Engineering Technology students enrolled in UWS Engineering & Architecture majors.

Appendix V
WTCS/UWS Program-to-Program Transfer Agreements
for WTCS Engineering Technology Programs

	MSN	MIL	EAU	GBY	LAC	OSH	PKS	PLT	RVF	STP	STO	SUP	WTW	UWC
Blackhawk								T3						
Chippewa Valley								T3						
Fox Valley								T3						
Gateway								T3			T4			
Lakeshore								T3						
Madison								T3			T4			
Mid-State								T3						
Milwaukee								T3						
Moraine Park								T3						
Nicolet								T3						
Northcentral								T3						
Northeast WI								T3						
Southwest WI								T3						
Waukesha		T1						T3						
Western					T2			T3						
WI Indianhead								T3						

T1 = WTCS Industrial Occupations to UW-Milwaukee Engineering & Computer Science (2001)
T2 = WTCS Engineering Technology to UW-La Crosse Computer Science - Electrical Engineering Concentration (2005)
T3 = WTCS Electronic Technology/Mechanical Design/Engineering Technology to UW-Platteville Industrial Technology (1998-2003) & Engineering (1998)
T4 = WTCS Technical Studies to UW-Stout Engineering Technology (2001) & Industrial Technology (2005)
Note: In addition to program-to-program agreements, UW institutions may also transfer specific WTCS engineering technology courses regardless of the student's program or major.

Appendix W
WTCS/UWS Assessment Cohorts
Students in WTCS Liberal Arts Program
Enrollment by WTCS District and UWS Institution

	MSN	MIL	EAU	GBY	LAC	OSH	PKS	PLT	RVF	STP	STO	SUP	WTW	UWC	TOTAL
Madison	1,741	351	110	37	157	134	22	172	22	158	77	17	577	222	3,797
Milwaukee	37	1,695	10	10	27	60	105	15	4	34	27	5	102	133	2,264
Nicolet	33	33	39	30	27	49	4	13	12	154	63	43	16	48	564
Overall Total	1,811	2,079	159	77	211	243	131	200	38	346	167	65	695	403	6,625

END NOTES

¹ Under current WTCS/UWS transfer policy, courses from WTCS applied associate degree programs may be accepted by UW System institutions in two ways: (1) A maximum of 30 credits from approved general education courses in social science, behavioral science, communications, mathematics, and natural science may transfer; and (2) WTCS students in applied associate degree programs may transfer additional coursework where WTCS/UWS program-to-program articulation agreements exist or the coursework may transfer on a course-to-course basis.

² The WTCS/UWS Assessment Cohort included WTCS students who enrolled in FTE-generating courses at the applied associate degree, liberal arts or technical diploma level in fiscal years 1994-95 through 2004-05. It excluded students who enrolled in WTCS courses as part of their high school curriculum ("high school specials"). Within the UWS, the cohort included only students who enrolled at the undergraduate level, excluding high school specials. Students were also excluded from the study if they attended a UW campus first and later enrolled at a WTCS district, and if this UWS enrollment was in the 1989-90 academic year or later.

³ Students were grouped into an academic year cohort based on their initial UWS enrollment year, combining summer, fall, winter and spring term enrollees. They were counted as retained to a second year if they enrolled in any term in the following year or received a bachelor's degree in either their first or second enrollment year.

⁴ Classification of Instructional Programs (CIP) is the U.S. Department of Education's standard educational program classification system. Postsecondary institutions assign each of their programs to a CIP code for federal reporting purposes. The first two digits of the six digit CIP code designate a discipline area. For this report CIP discipline areas were combined into program groups as follows:

Group	Program/Major Group Title	CIP Areas in Group
1	Ag & Nat Resources	01 - Agriculture, Agriculture Operations, and Related Sciences
		03 - Natural Resources and Conservation
2	Biological/Physical Sciences	26 - Biological and Biomedical Sciences
		40 - Physical Sciences
		41 - Science Technologies/Technicians
3	Business	52 - Business, Management, Marketing, and Related Support Services
4	Communications/Arts	09 - Communications, Journalism, and Related Programs
		10 - Communications Technologies/Technicians and Support Services
		50 - Visual and Performing Arts
5	Education	13 - Education
6	Engineering & Architecture	14 - Engineering
		15 - Engineering Technologies/Technicians
		04 - Architecture and Related Services
7	Health-Related Professions	51 - Health Professions and Related Clinical Sciences
		31 - Parks, Recreation, Leisure and Fitness Studies
8	Home Economics/Personal Services	19 - Family and Consumer Sciences/Human Sciences
		12 - Personal & Culinary Services
9	Humanities/Liberal Arts	05 - Area, Ethnic, Cultural and Gender Studies
		16 - Foreign Languages, Literatures and Linguistics
		23 - English Language and Literature/Letters
		24 - Liberal Arts and Sciences, General Studies and Humanities
		30 - Multi/Interdisciplinary Studies
		38 - Philosophy and Religious Studies
10	Math, Computer & Info Sciences	39 - Theology and Religious Vocations
		11 - Computer and Information Sciences and Support Services
		25 - Library Science
11	Public Admin/Legal Services	27 - Mathematics and Statistics
		22 - Legal Professions and Studies
		43 - Security and Protective Services
		44 - Public Administration and Social Service Professions
		49 - Transportation and Materials Moving
12	Social Sciences	29 - Military Technologies
		42 - Psychology
		45 - Social Sciences
13	Trades/Technical	54 - History
		46 - Construction Trades
		47 - Mechanic and Repair Technologies/Technicians
		48 - Precision Production Trades

⁵ The table below lists (1) WTCS programs and their associated program codes and (2) UWS majors and their major codes that were included in the program-specific sections of this report. See the definition for CIP - Classification of Instructional Programs in the previous page.

WTCS Program	WTCS Program Code	UWS Major	UWS Major Code
Early Childhood Education	103071	Early Childhood Education	8231
		Elementary Education	8021
Information Technology (IT)	101070 through 101079 101521 through 101528 101501 through 101504 101541 through 101548 101352 through 101353	Computer Science/Information Systems	7011 7021 through 7024 7071
Marketing	101043 101046 101048 101111	Marketing	5091 8381
		Business Administration/Management	5061-5062 5011 5069
Nursing	105101 & 105431	Nursing	12031 12032
Criminal Justice	105041 105042	Criminal Justice	21051
Engineering Technology	All Applied Associate Degree Program Codes under CIP 14 & 15	Engineering/Engineering Technology	All Major Codes under CIP 14 & 15 09250 09601
Accounting	101011	Business	All Major Codes under CIP 52
Liberal Arts	208001		