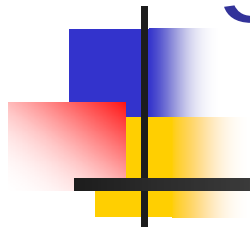


WTCS Transfers to the University of Wisconsin System



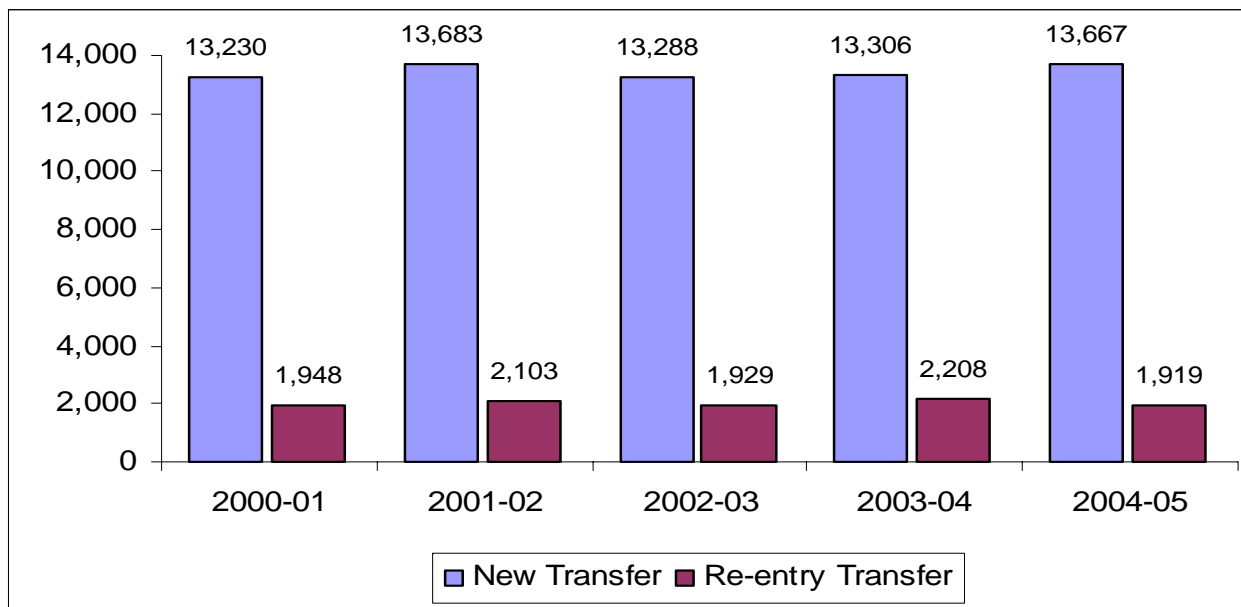
University of Wisconsin
System

Office of Policy Analysis
and Research

April 20, 2006

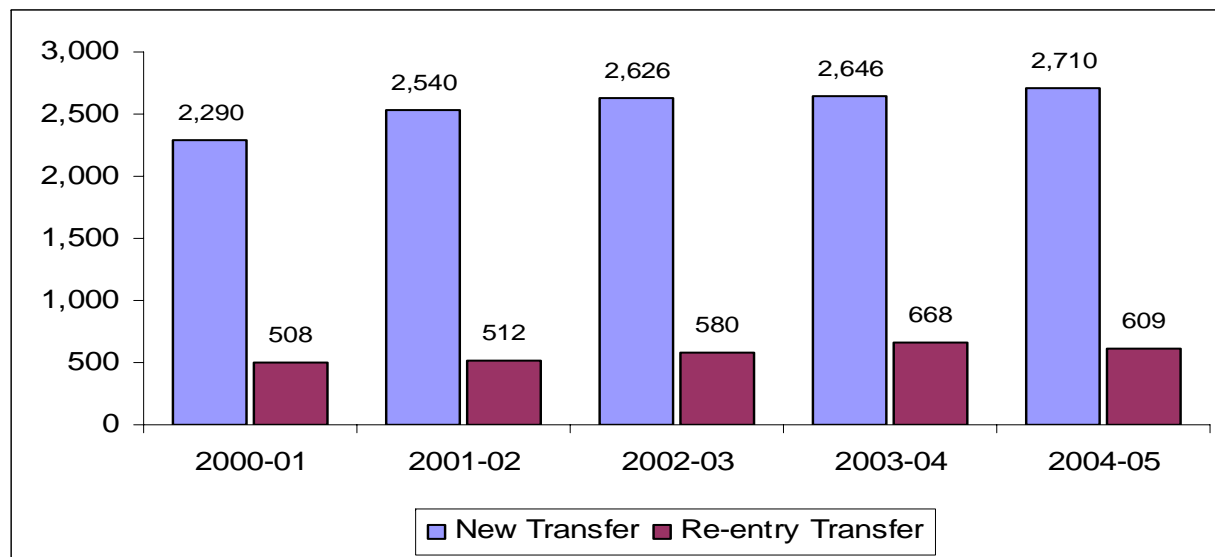
Overall UW System Transfer Trends

- In 2004-05, 15,586 students transferred into the UW System.
- Of these, 13,667 were new transfer students.
- The remaining 1,919 were re-entry transfer students.

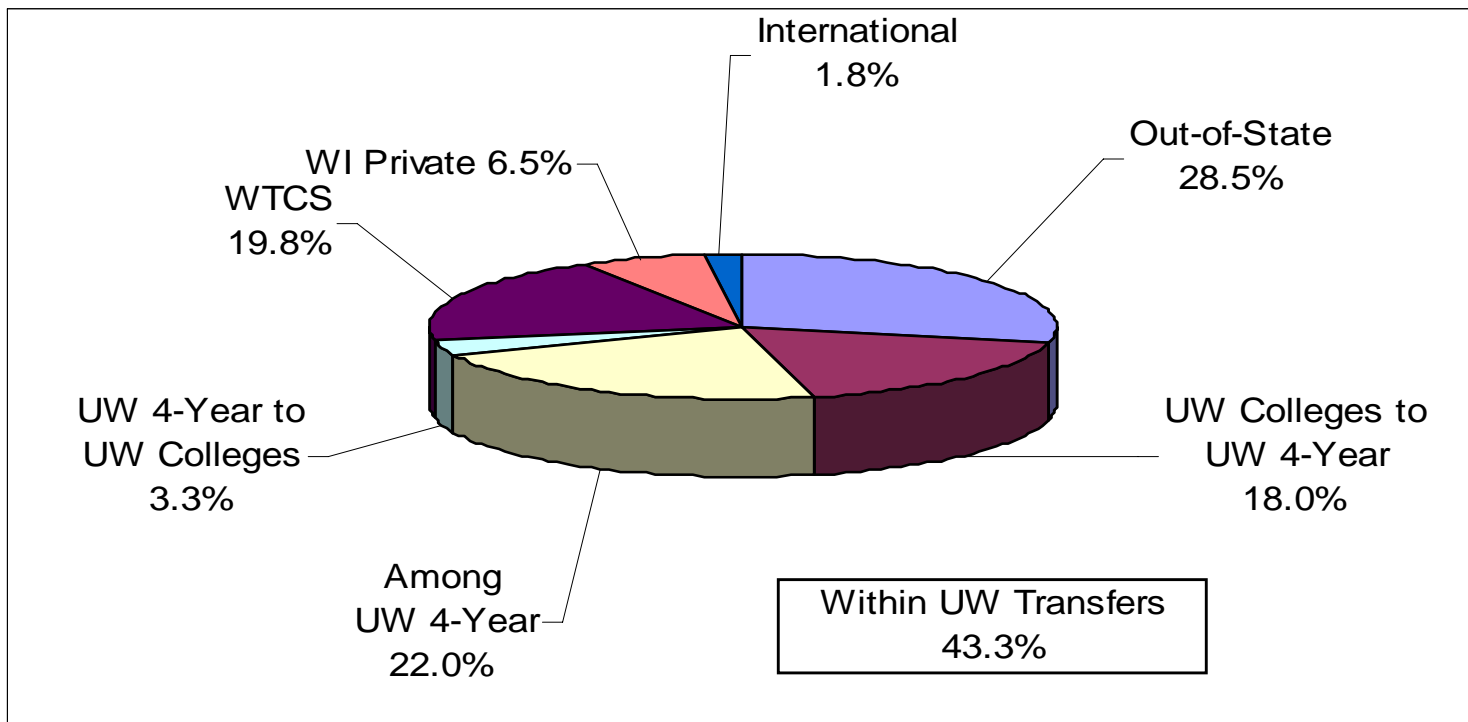


Overall WTCS to UW System Transfer Trends

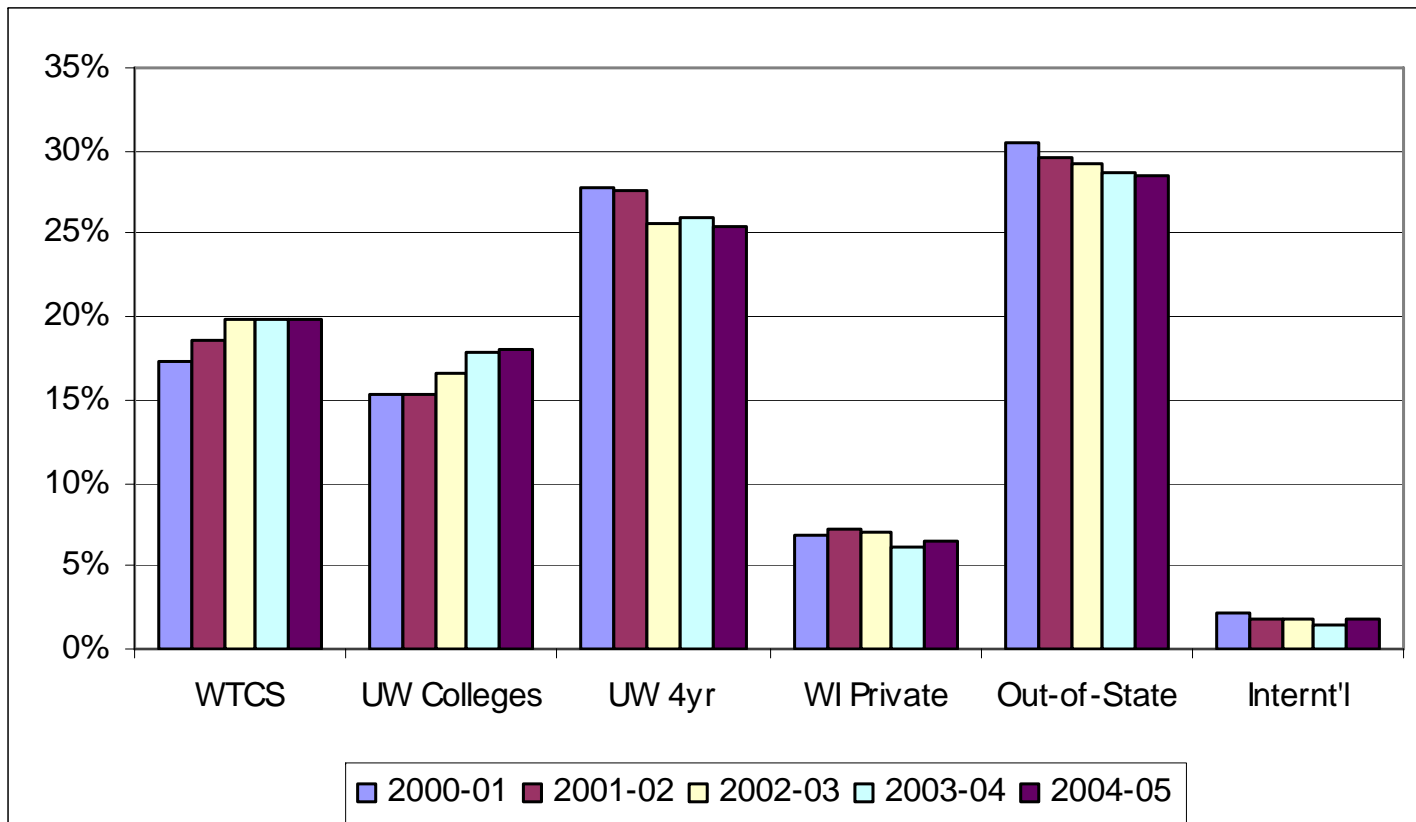
- In 2004-05, 3,319 WTCS students transferred into the UW System.
- New transfer students accounted for 2,701 of these and 609 were re-entry transfer students.



UWS New Transfer Students by Source 2004-05



UWS New Transfer Students by Source





UWS New Transfer Students by Sending Institution

- The largest source of in-state transfer activity is from Milwaukee Area Technical College to UW-Milwaukee.
 - Accounts for 75 percent of MATC (Milwaukee) transfers into the UW.
- The second largest source of in-state transfer activity is from Madison Area Technical College to UW-Madison.
 - Accounts for 36 percent of MATC (Madison) transfers into the UW.
- The third largest source of in-state transfer activity is from UW-Waukesha to UW-Milwaukee.
 - Accounts for 50 percent of UW-Waukesha's transfers into the UW.

Characteristics of New Transfer Students from WTCS

(Compared to non-WTCS Transfers)

WTCS transfer students are:

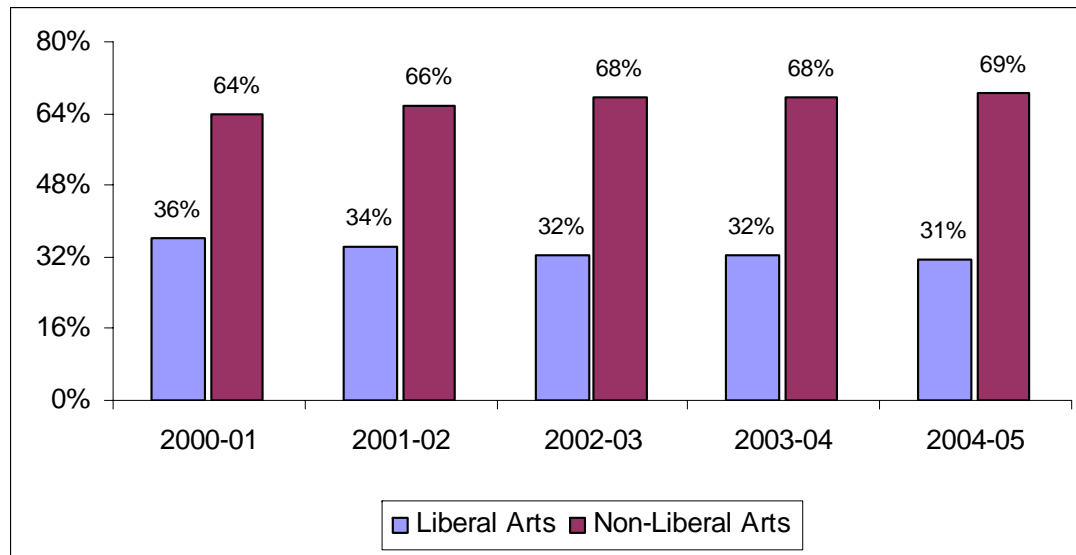
- Older (32 percent 25 years+ compared to 16 percent)
- Part-time (32 percent compared to 19 percent)
- Freshmen (55 percent compared to 20 percent)
- Diverse (12 percent compared to 8 percent)

WTCS transfer students have:

- Slightly lower retention rates (67 percent compared to 71 percent)
- Slightly lower GPA's (2.8 compared to 2.9)
- Slightly lower completion rates (53 percent compared to 64 percent for sophomores)

New Transfers from WTCS Liberal Arts Programs

- In 2004-05, over 1,600 (69%) of WTCS new transfer students into the UW System were from non-liberal arts programs.
- Both the number and proportion of non-liberal arts transfer students into the UW System has increased.





Characteristics of New Transfer Students from WTCS Liberal Arts Programs

(Compared to WTCS Non-Liberal Arts)

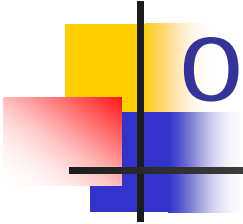
WTCS Liberal Arts transfer students are:

- Younger (24 percent 25 years+ compared to 34 percent)
- Full-time (73 percent compared to 67 percent)
- Upperclassmen (33 percent compared to 13 percent)
- Diverse (16 percent compared to 11 percent)

WTCS Liberal Arts transfer students have:

- Slightly higher retention rates (71 percent compared to 65 percent)
- Similar GPA's (2.8)
- Higher completion rates (59 percent compared to 48 percent for sophomores)

“Transfers” are only part
of the story.....



Joint WTCS/UWS Program Assessment Study



Wisconsin Technical College
System

University of Wisconsin
System

April 20, 2006



Background

- Data Exchange Memorandum of Understanding developed in March 2001.
- Goals:
 - Identify potential program areas for WTCS/UWS articulation agreements.
 - Measure the success of students enrolling from program-to-program.



Assessment Approach

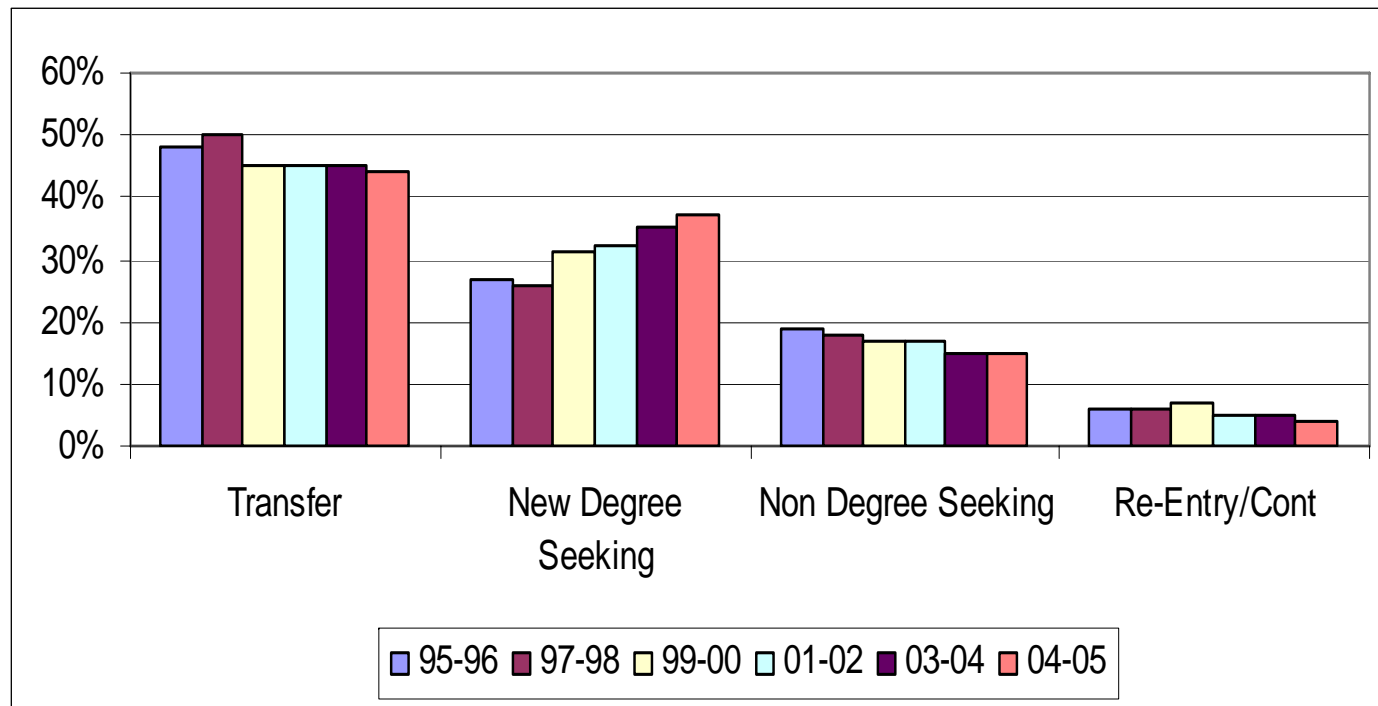
- Only includes students who attended WTCS districts in 1994-95 or later and subsequently enrolled in the UWS.
- Includes students who attended the two systems regardless of whether or not they “transferred” to the UWS.



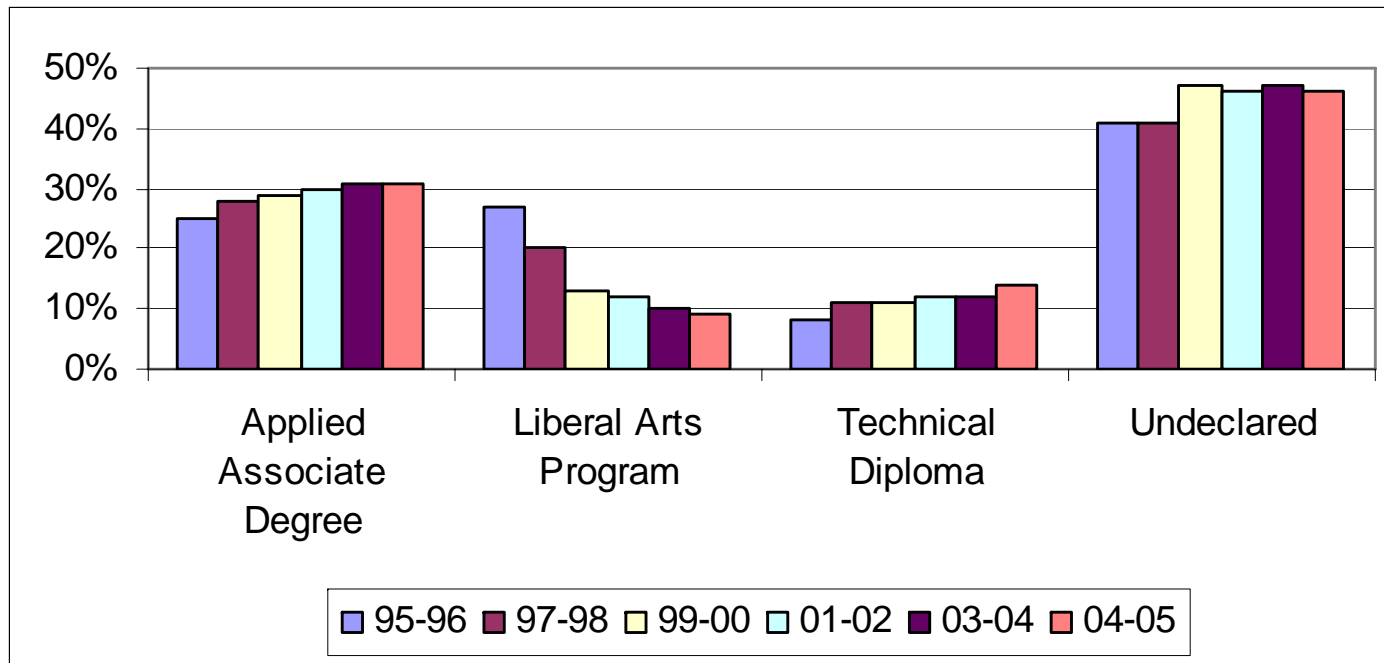
WTCS to UWS Enrollment

- Over 43,000 students attended a WTCS district in 1994-95 through 2003-04 and subsequently enrolled at a UW System institution.
- The majority of students initially enrolled in a UW the year directly following their last WTCS enrollment, or were concurrently enrolled in the UWS.
- Forty-three (43%) of wait one year or more before their enrollment in the UWS.

Entrance Status at UWS



Program Type at WTCS





WTCS Program Enrollments

- The three largest WTCS programs from which students entered the UWS were:
 - WTCS Humanities/Liberal Arts programs (6,221; 26%).
 - WTCS Health Related programs (5,908; 25%)
 - WTCS Business programs (4,066; 17%)
- Forty-five percent (45%) of all WTCS students did not have a declared WTCS program of study.

Program Specific Enrollments & Assessment



- Nursing
- Early Childhood Education
- Computer Information Systems (CIS)
- Marketing
- Criminal Justice



WTCS Nursing Students

- The 2006 program assessment study included 1,122 students from a WTCS nursing program.
- Of those students with a declared UW System major, 69 percent enroll in a UWS health-related program.

WTCS Nursing Students: Programs Entered at UWS

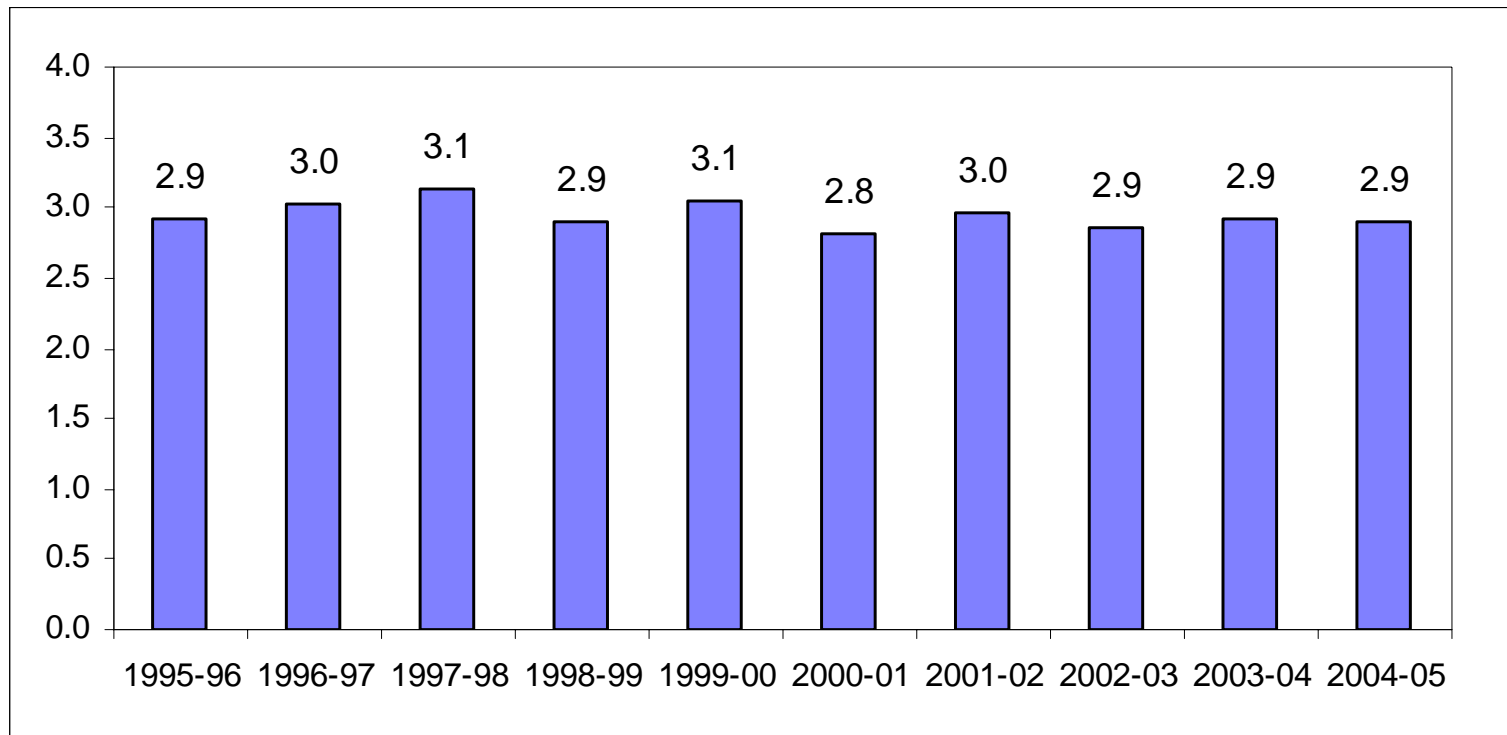
UWS Program Group	# of Students
Ag & Nat Resources	2
Biological/Physical Sciences	28
Business	21
Communications/Arts	10
Education	34
Engineering & Architecture	2
Health-Related Professions	349
Home Economics/Personal Services	4
Humanities/Liberal Arts	18
Math, Computer & Info Sciences	2
Public Admin/Legal Services	10
Social Sciences	25
Trades/Technical	0
Undeclared	617
Total	1,122

UWS Nursing Students & WTCS Source Program

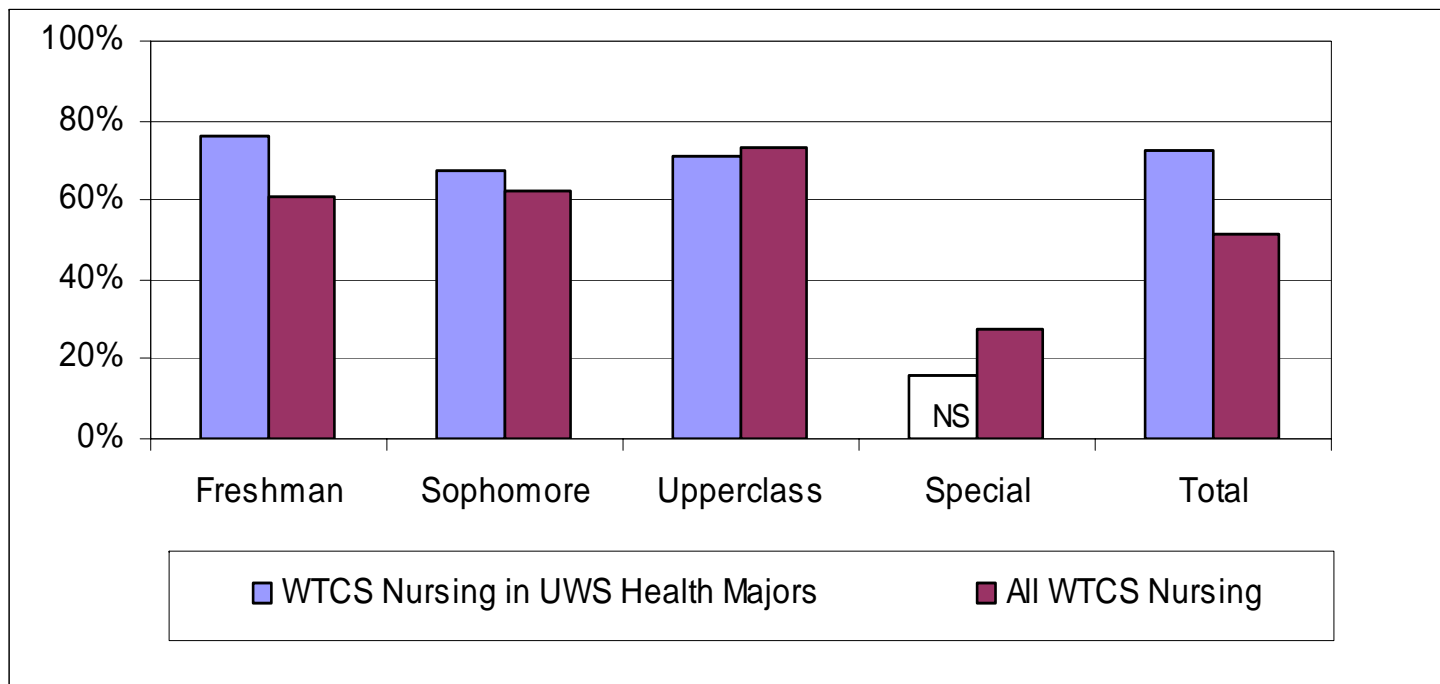
- Seventy-three percent (73%) of students that enroll in a UW nursing program were from a WTCS nursing assistant or nursing associate degree program.
- Twenty percent (20%) were from Liberal Arts and non-health related programs.

WTCS Program	#	%
Nursing Assistant	369	38%
Nursing Associate Degree	338	35%
Other Health Programs	72	7%
Liberal Arts	117	12%
Other Non-Health Programs	80	8%
Total	976	100%

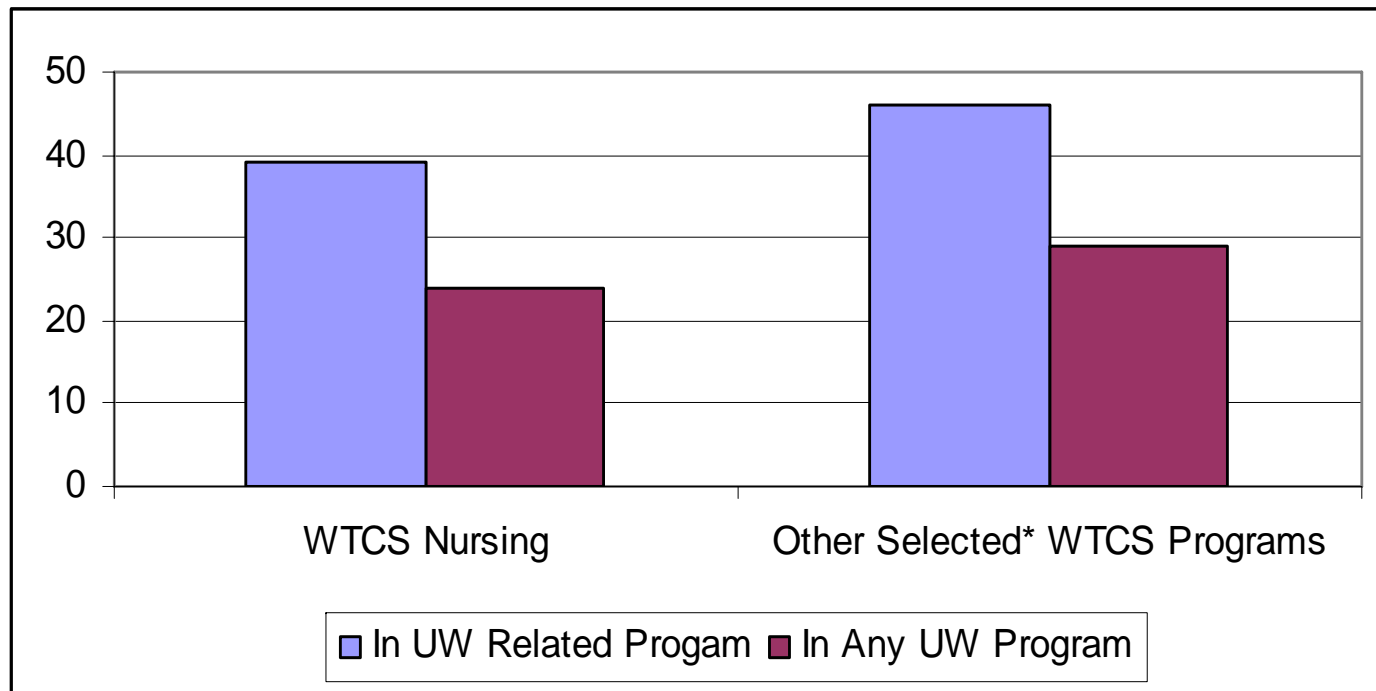
WTCS Nursing Students Average First Year GPA



WTCS Nursing Students 2nd Year Retention at UWS



WTCS Nursing Students Combined 5th Year Graduation and 6th Year Retention



*Other Selected WTCS Programs include Early Childhood Education, Computer Information Systems, Marketing, and Criminal Justice.



Summary

- Prior studies of “Transfer” students capture about half (46%) of the student movement from WTCS to the UW.
- Over all years, about one-third (32%) of WTCS students enroll in the UW as new degree seeking students.
- Of the students who come to the UWS after attending a WTCS, the majority enroll in the year immediately following their last WTCS year.
- Over all years, 28 percent come to the UW from a WTCS applied associate degree programs, 12 percent enroll from technical diploma programs and 14 percent from college transfer programs.



Summary (cont.)

- The proportion of WTCS students from Applied Associate Degree and Technical Diploma programs is increasing.
- Program specific information has been provided to assist in the evaluation of student outcomes in selected programs as well as to assist in the identification of program areas for further articulation agreements.