



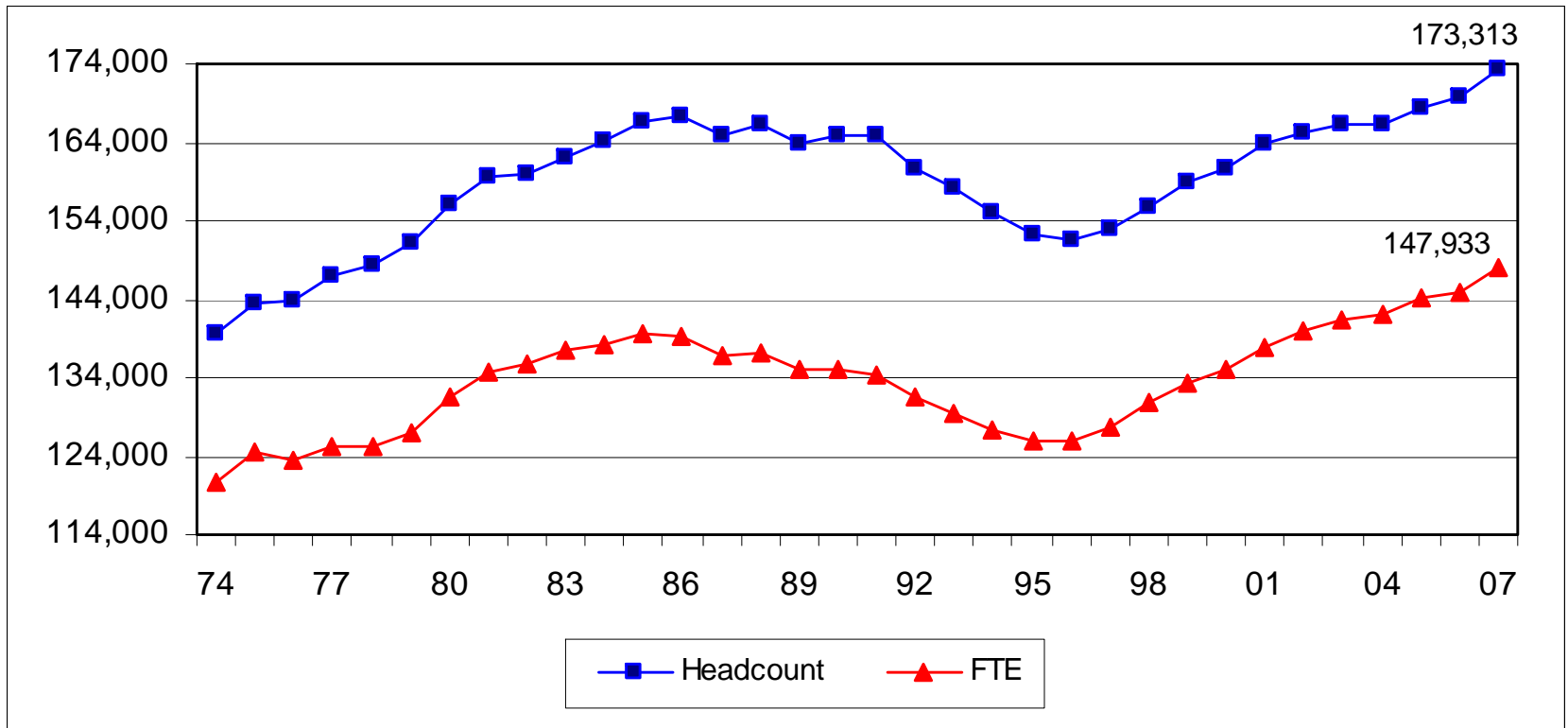
# **UW System Fall 2007 Enrollment Update**

Sharon Wilhelm  
Interim Associate Vice President  
Office of Policy Analysis and Research

Board of Regents  
December 6, 2007



# UW System Headcount and FTE Enrollment



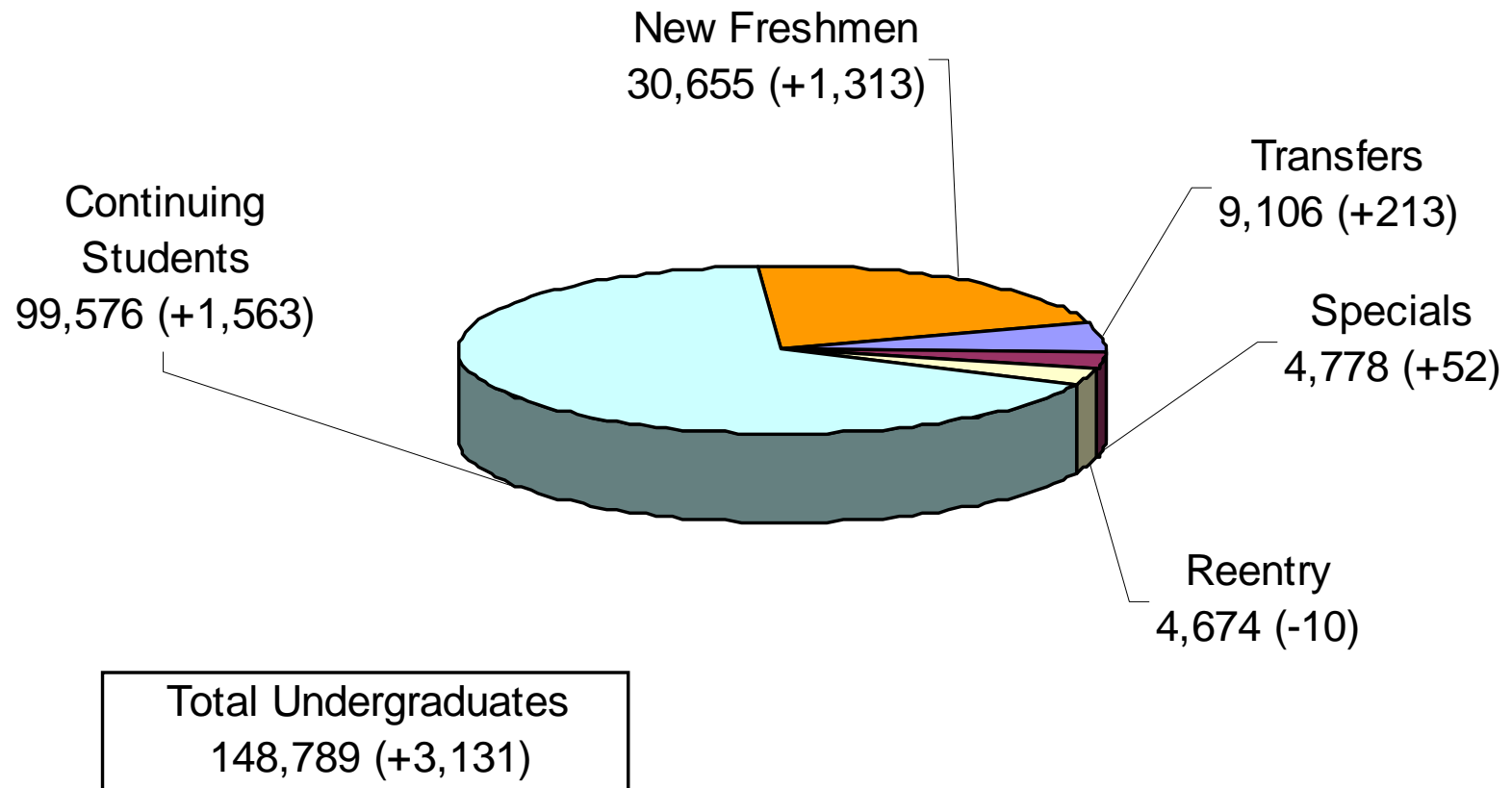
# Fall 2007 Enrollments



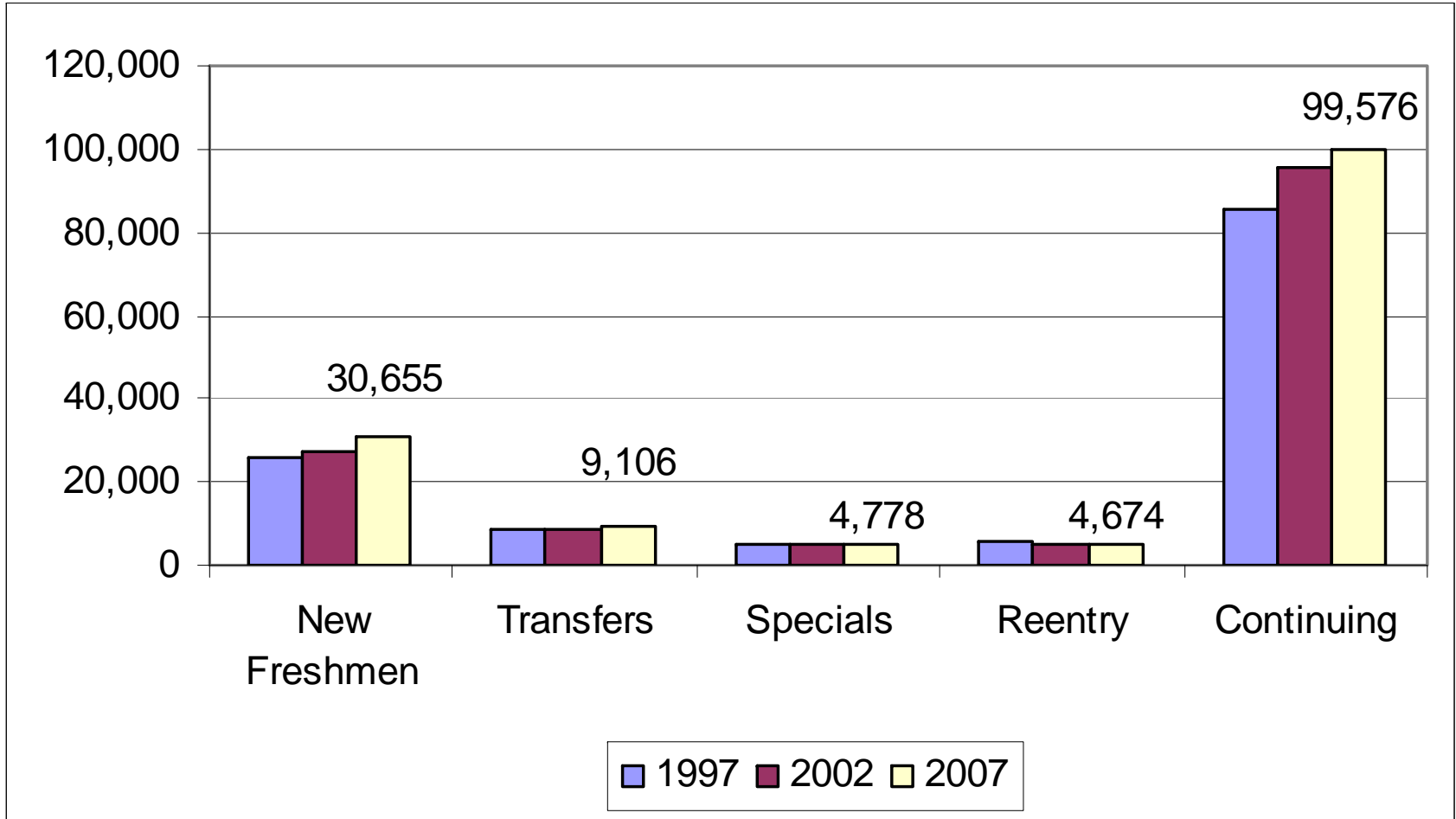
	Total Headcount		Total FTE	
	2007	Change from 06	2007	Change from 06
UW-Madison	41,563	535	37,137	411
UW-Milwaukee	29,338	1,029	23,780	1,033
UW-Eau Claire	10,854	88	9,738	11
UW-Green Bay	6,110	420	5,021	302
UW-La Crosse	9,994	145	9,243	216
UW-Oshkosh	12,692	162	10,152	44
UW-Parkside	5,010	3	3,985	51
UW-Platteville	7,189	376	6,270	258
UW-River Falls	6,452	223	5,841	229
UW-Stevens Point	9,115	67	8,268	103
UW-Stout	8,477	105	7,320	-2
UW-Superior	2,753	-171	2,246	-97
UW-Whitewater	10,737	235	9,484	263
UW Colleges	13,029	390	9,450	297
UW System	173,313	3,607	147,933	3,117

# Fall 2007

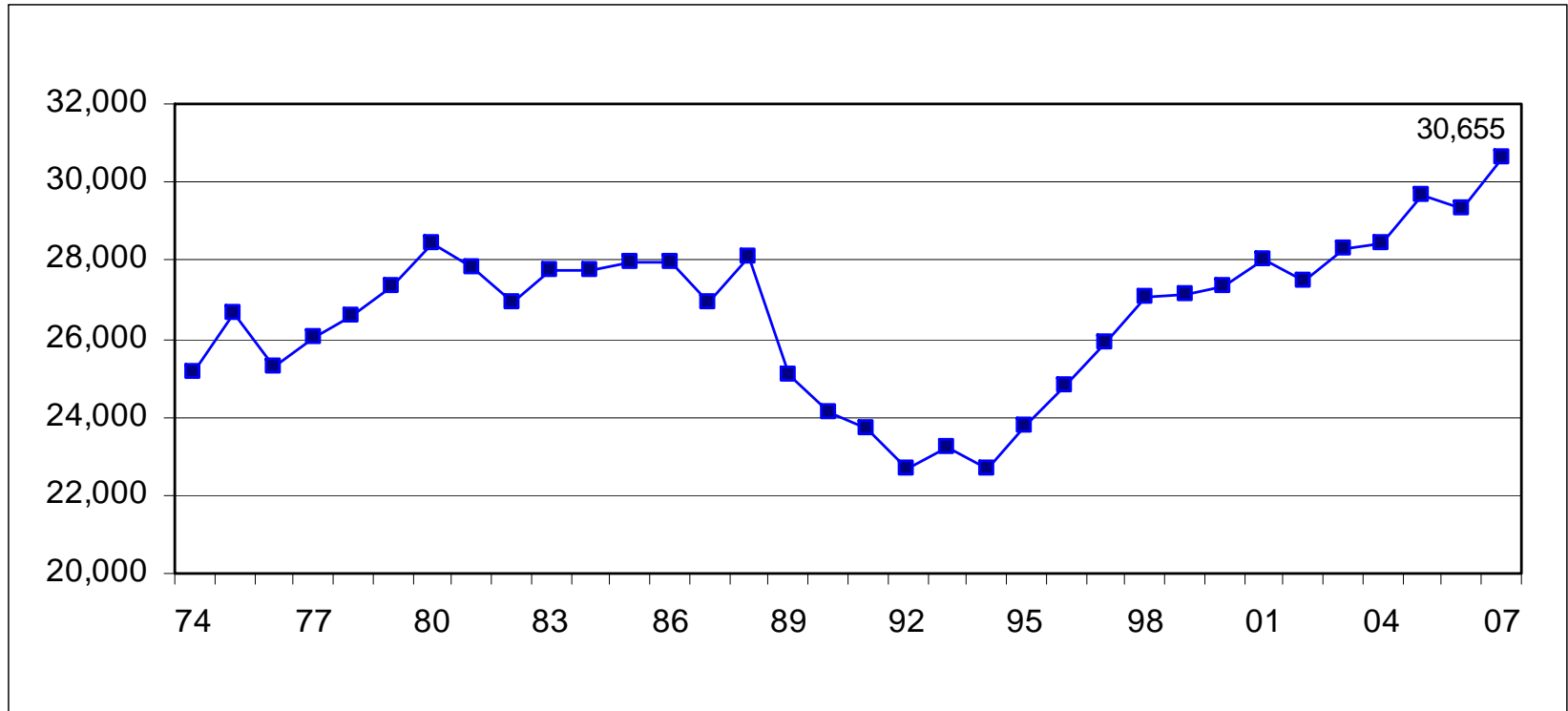
## Undergraduate Students



# Undergraduate Students



# New Freshmen Headcount

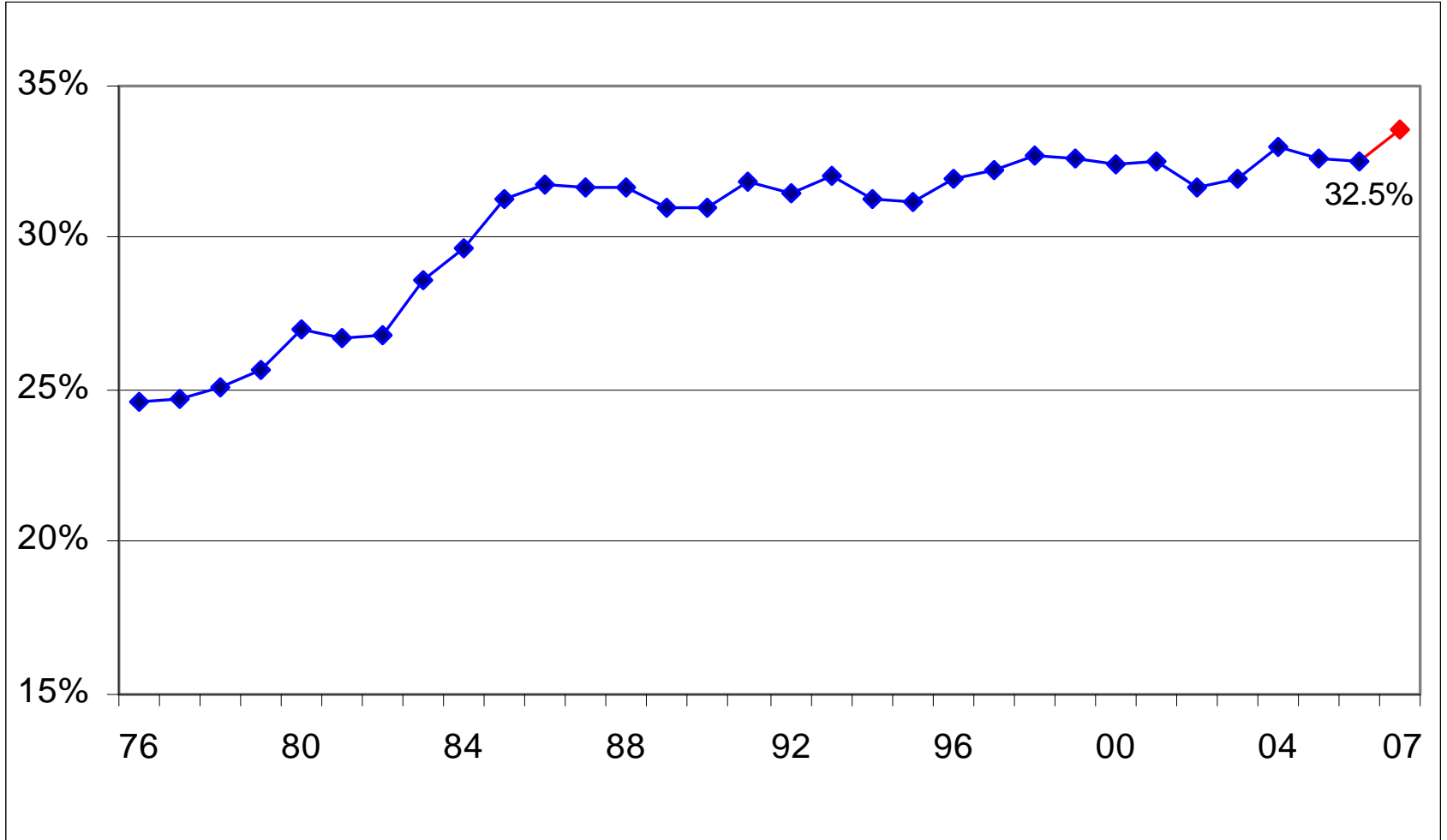


# New Freshmen Headcount

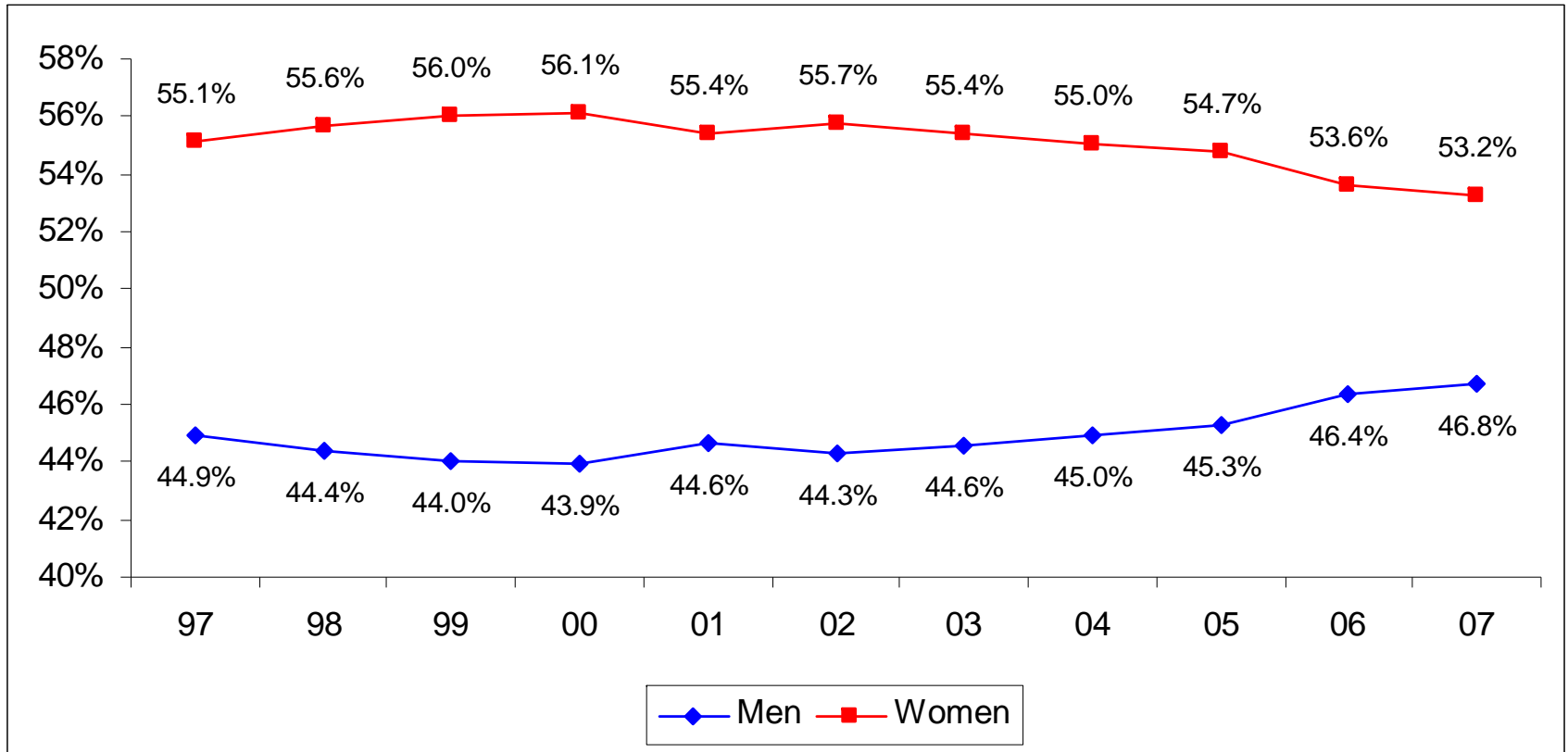
	2007	Change from 06
UW-Madison	5,994	351
UW-Milwaukee	4,598	508
UW-Eau Claire	2,034	8
UW-Green Bay	1,003	-25
UW-La Crosse	1,754	2
UW-Oshkosh	1,763	-2
UW-Parkside	951	44
UW-Platteville	1,546	107
UW-River Falls	1,287	-9
UW-Stevens Point	1,624	-26
UW-Stout	1,498	-18
UW-Superior	350	38
UW-Whitewater	2,063	258
UW Colleges	4,190	77
UW System	30,655	1,313



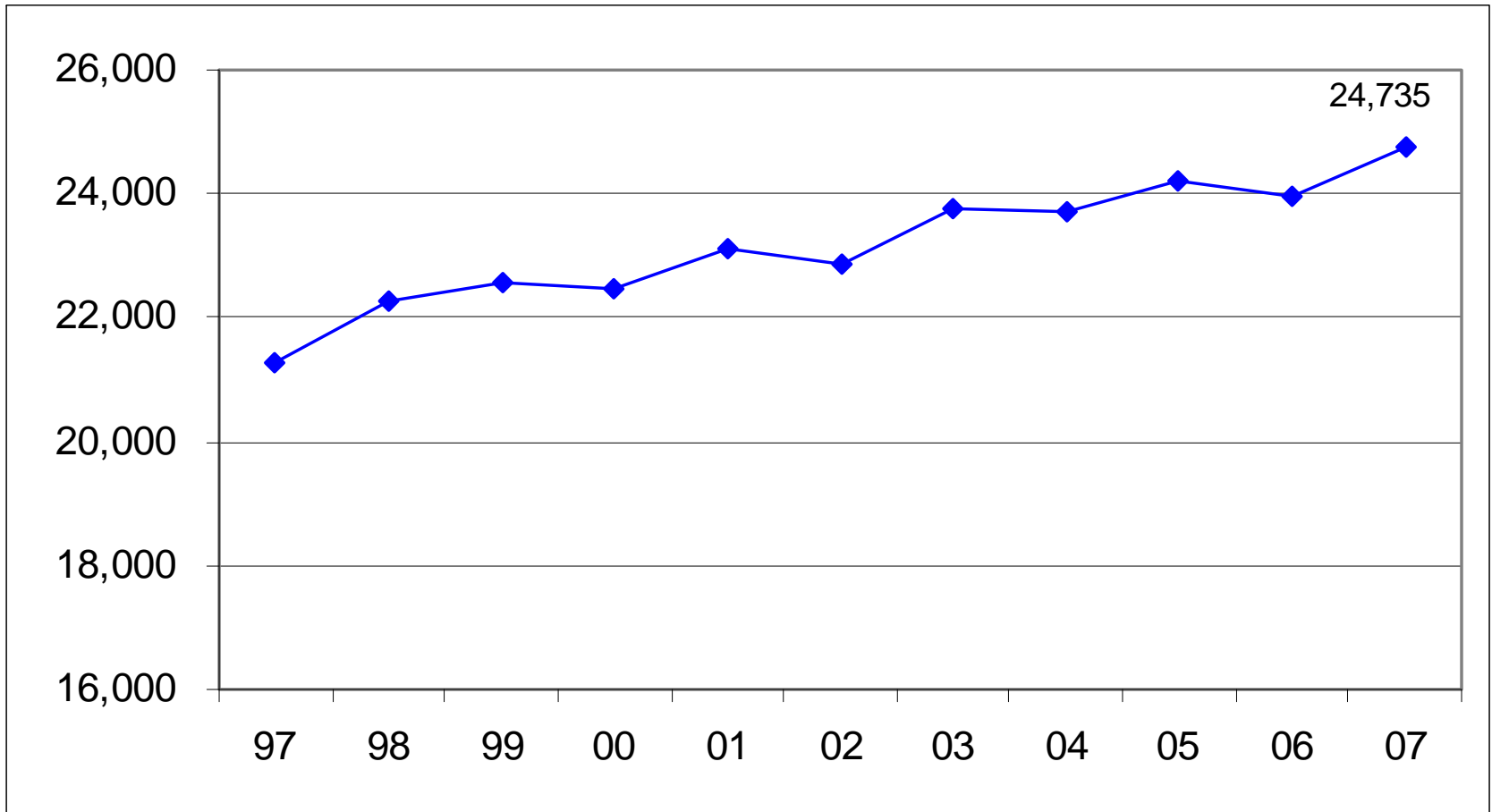
# New Freshmen Access Rate



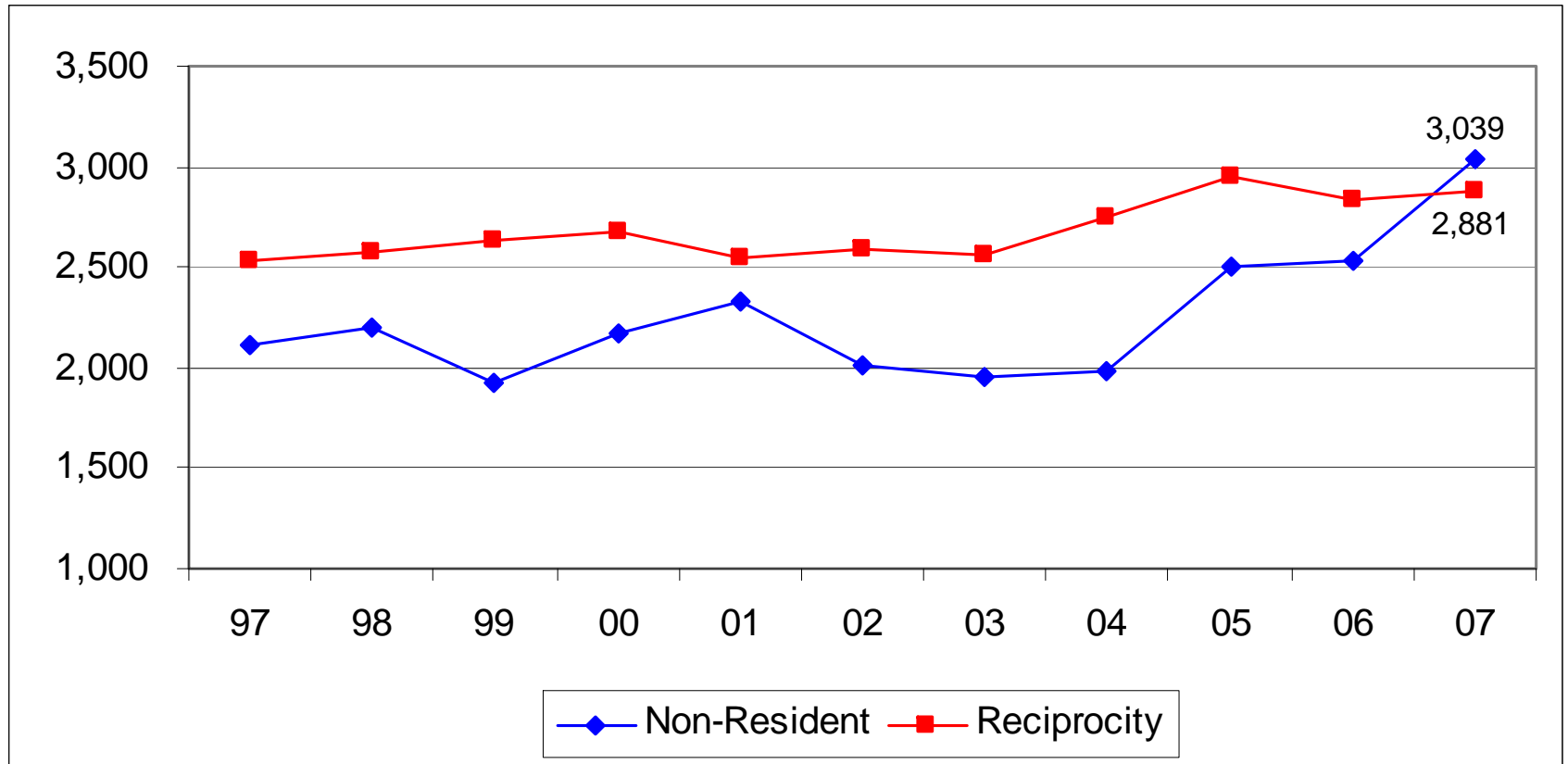
# New Freshmen by Gender



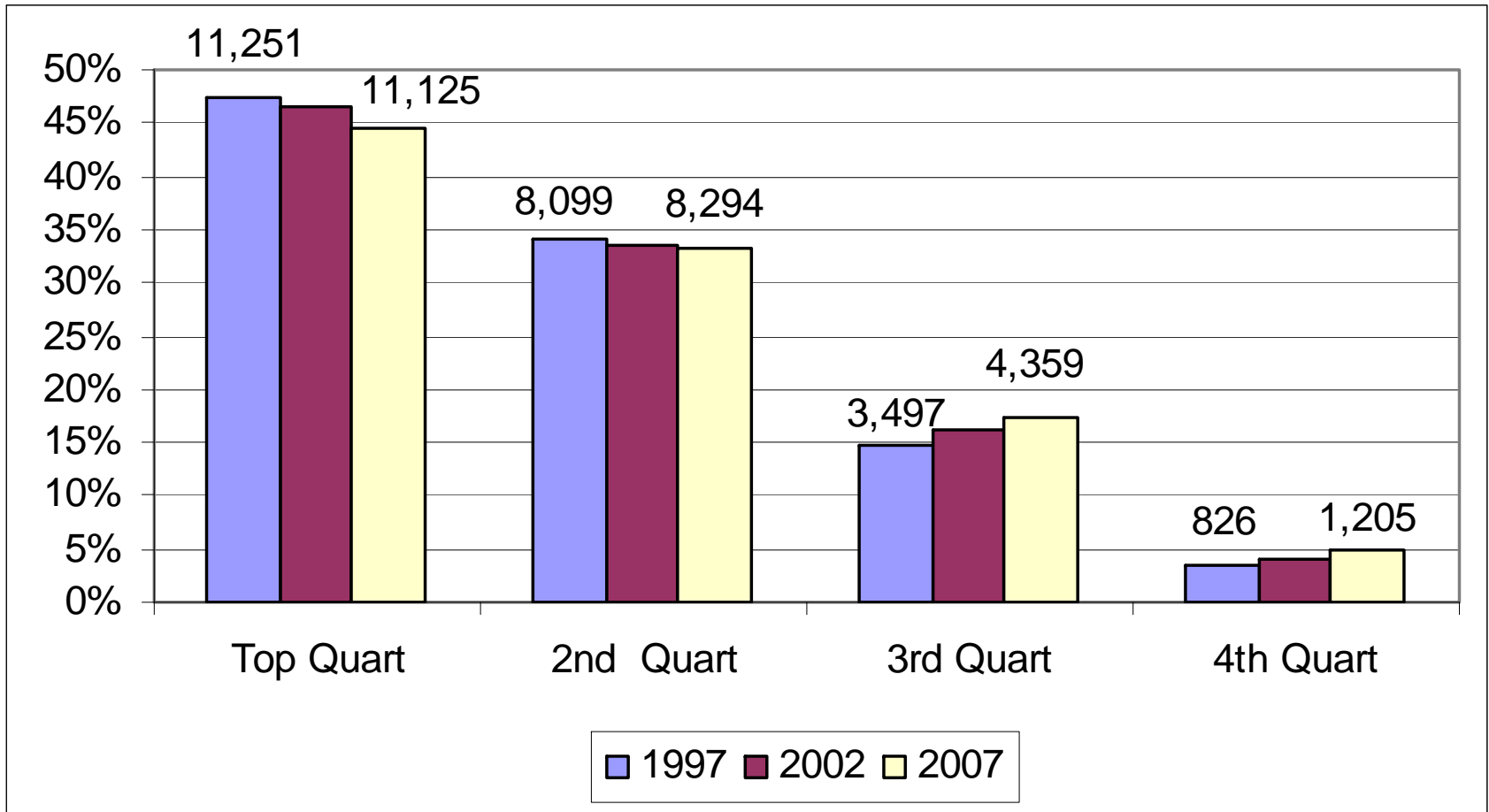
# Resident New Freshmen



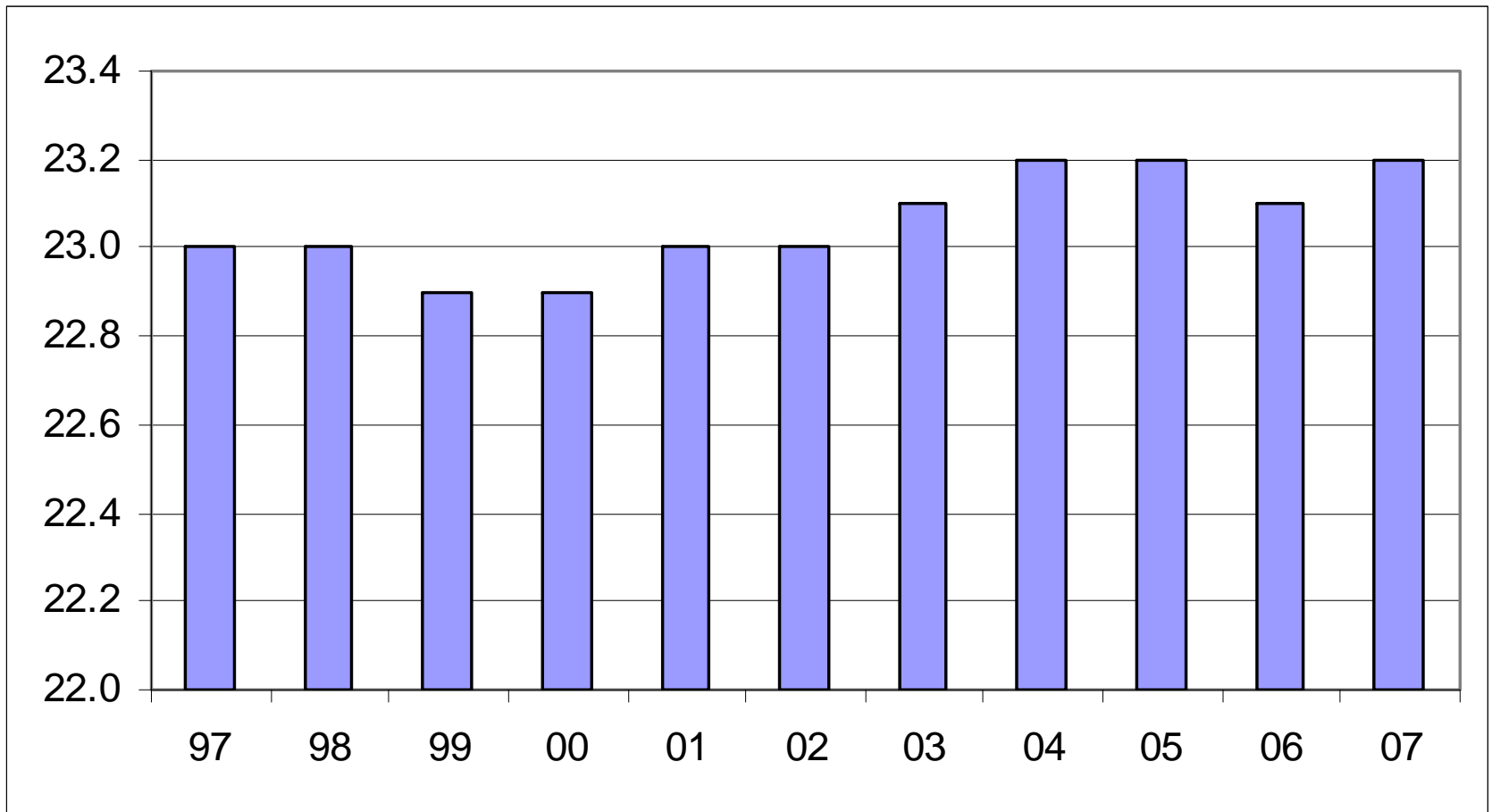
# Non-Resident New Freshmen



# New Freshmen by High School Rank

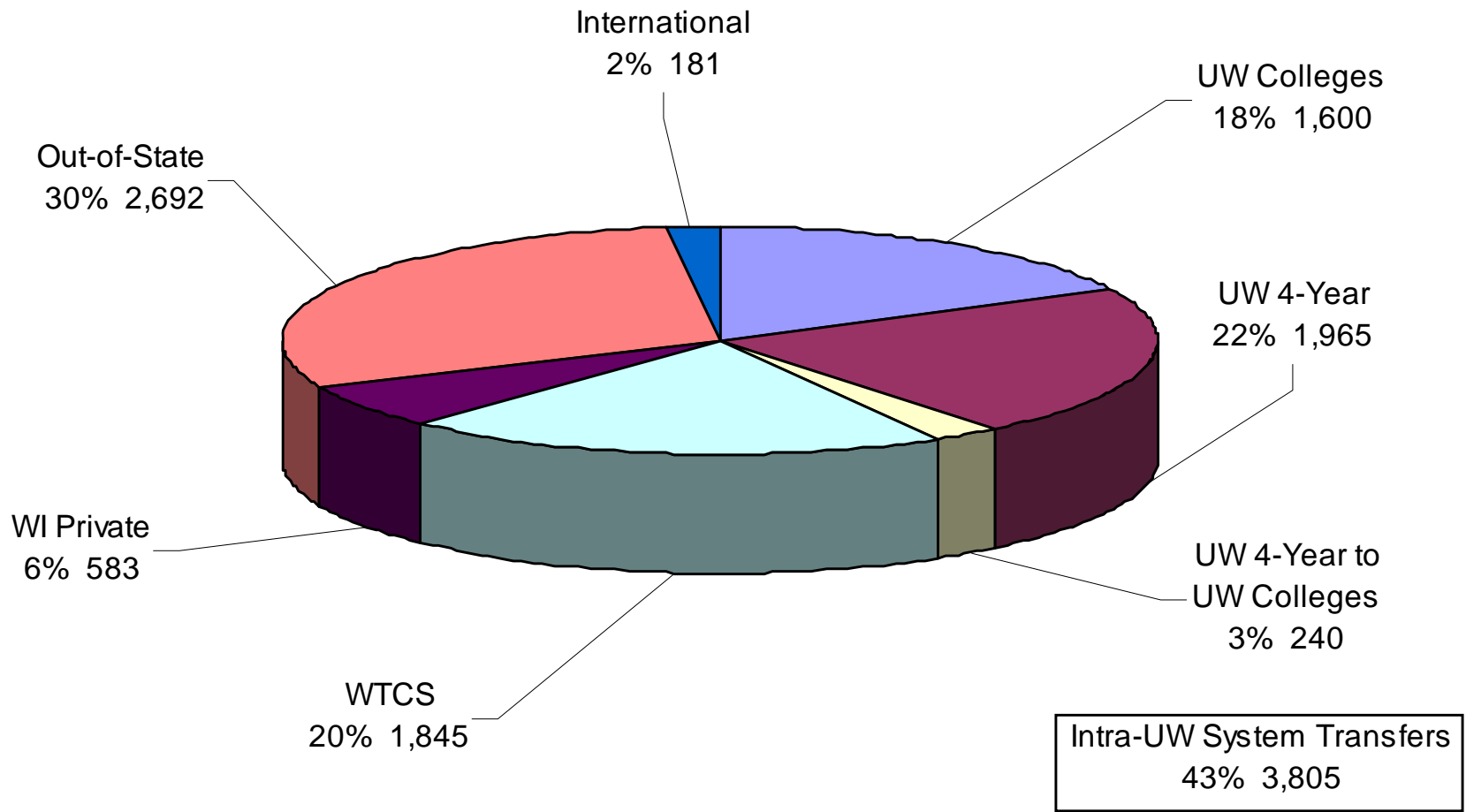


# New Freshmen by ACT Composite Score

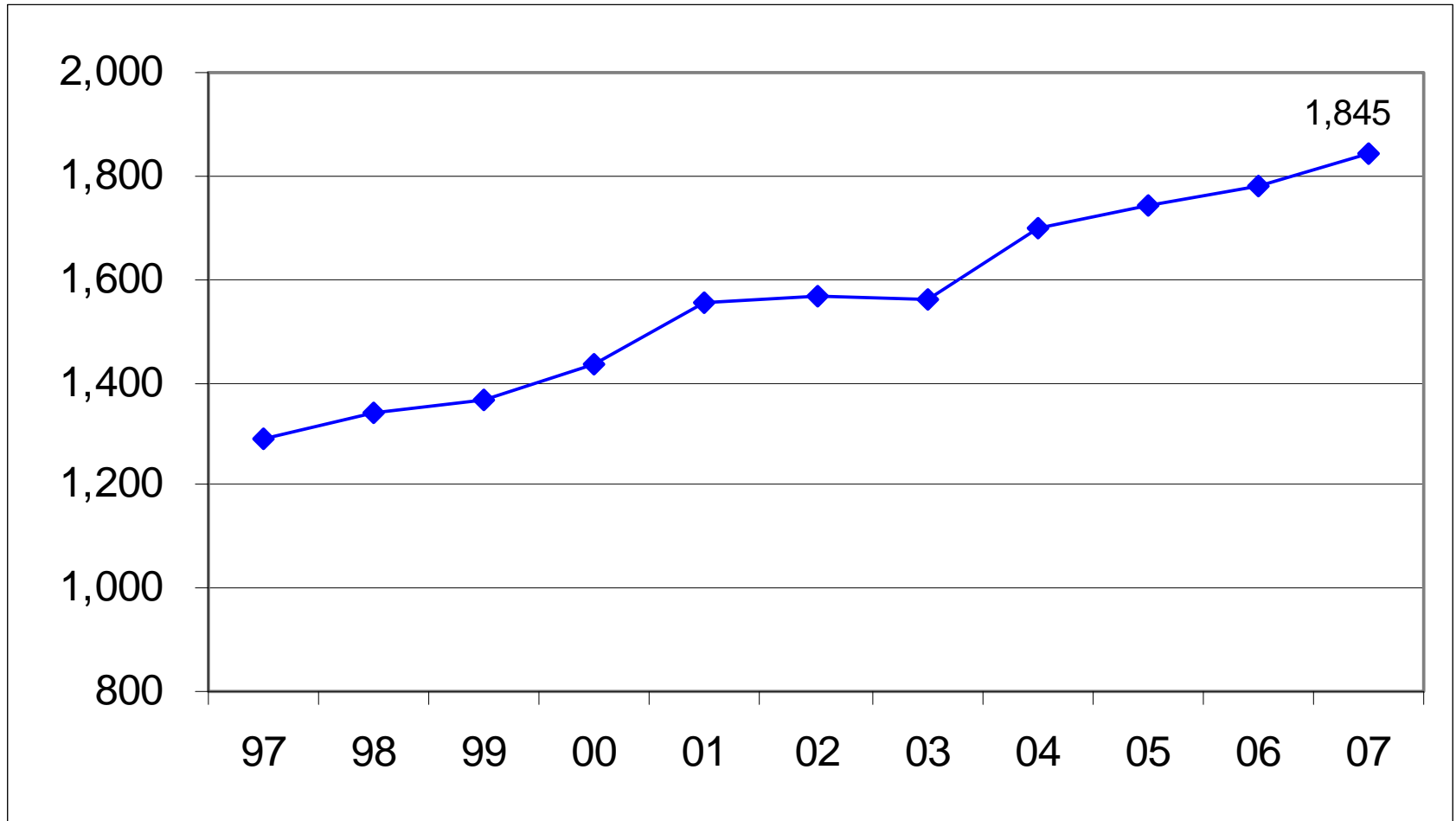




# Transfer Students by Type of Transfer Institution

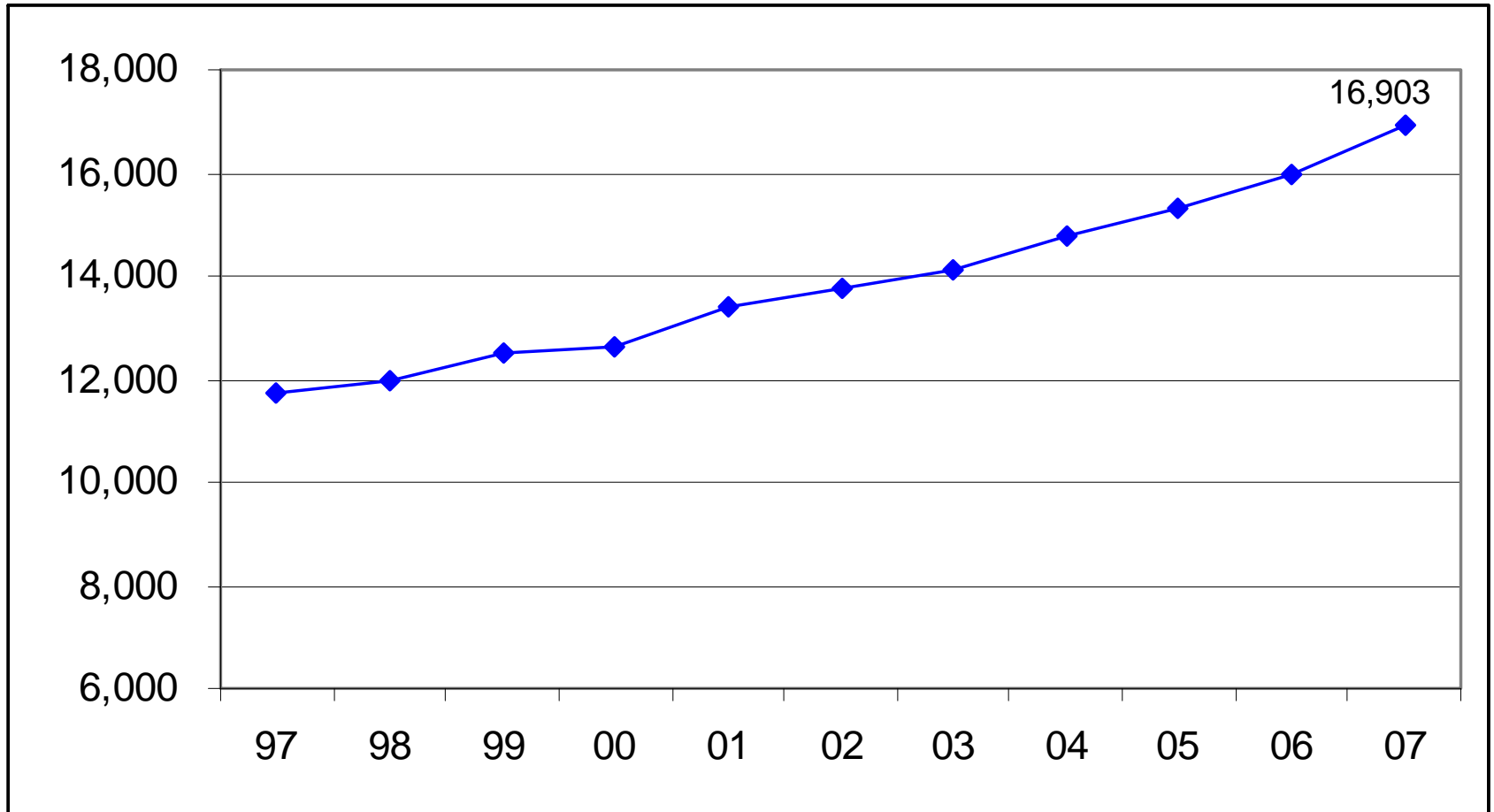


# Transfer Students from WTCS



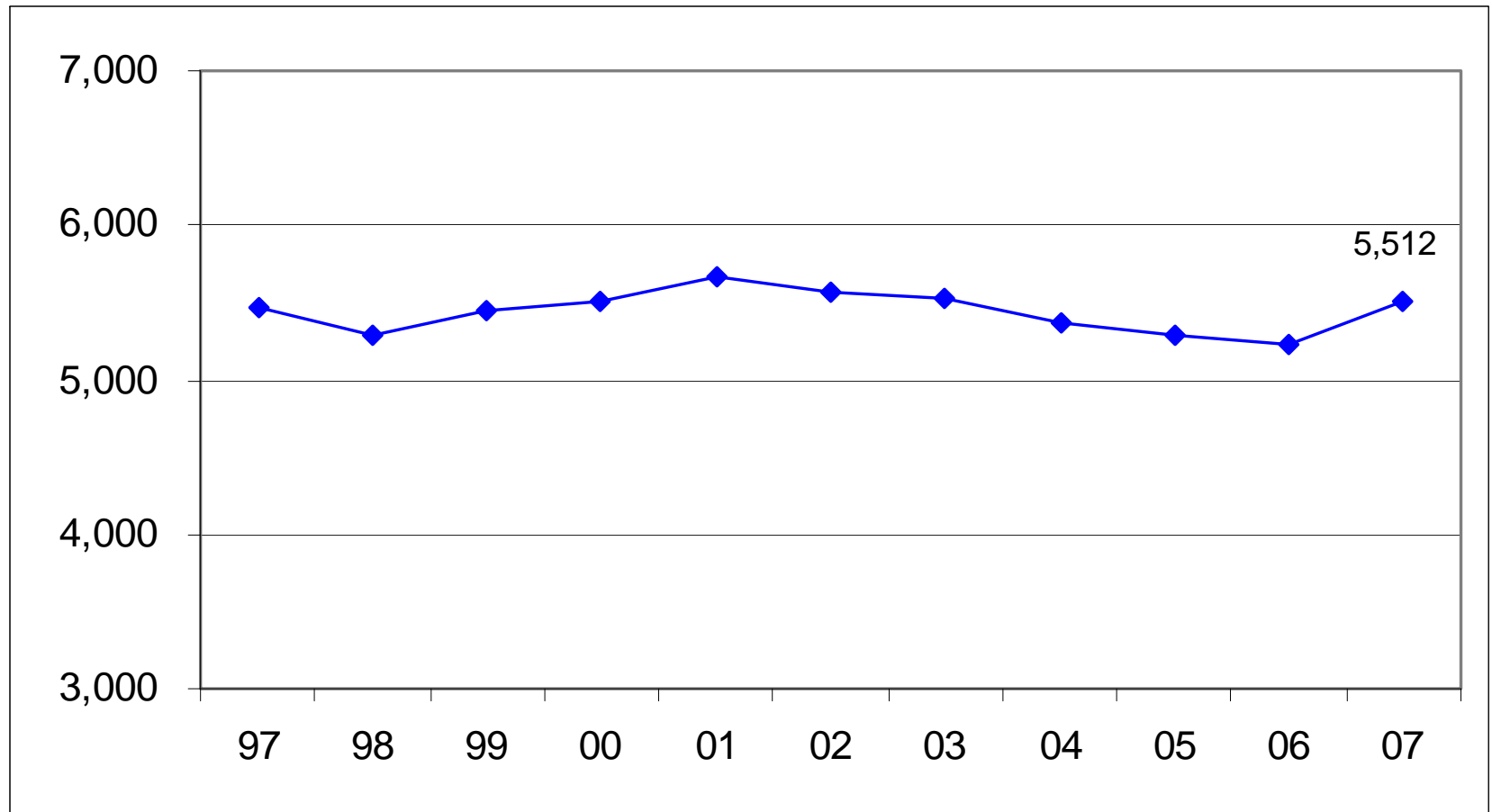
# Students of Color

(Undergraduate and Graduate Students)



# International Students

(Undergraduate and Graduate Students)

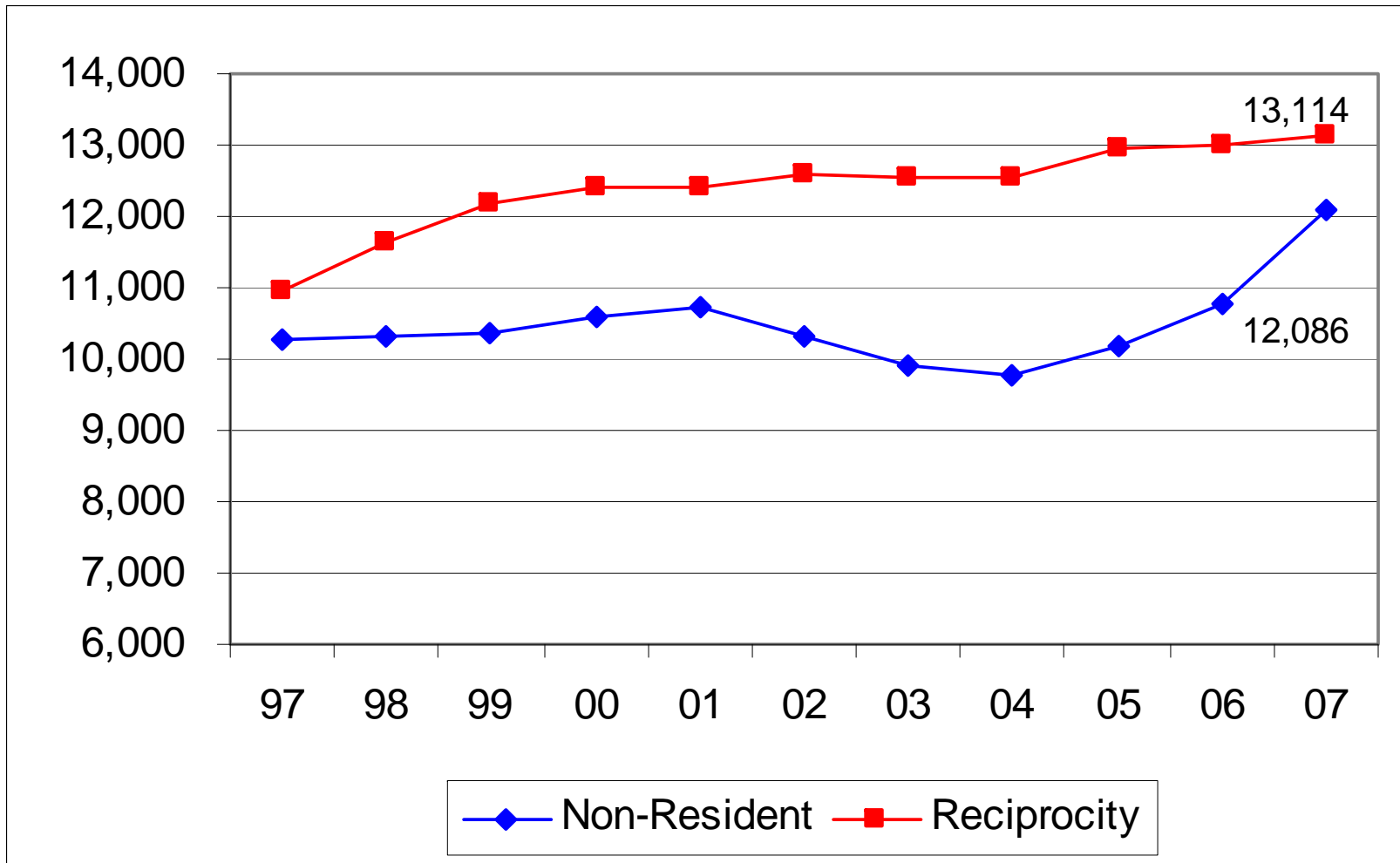


# Veterans

(Undergraduate and Graduate Students)

	<b>Fall 2005</b>	<b>Fall 2006</b>	<b>Fall 2007</b>
Students Who Self-Reported as Veterans	2,517	3,138	3,975
Veterans Receiving WI GI Bill Benefits	963	1,534	2,429
Spouses/Children Receiving WI GI Bill Benefits	242	476	748

# Undergraduate Non-Resident Students



# Summary

- Total enrollments at all time high
- Number of new freshmen at all time high
- Number of transfers from WTCS at all time high
- More undergraduates continuing on to complete their bachelors degree
- Students of color enrollments are up