

TRANSFER STUDENTS

Executive Summary

Transfer students constitute a significant and important segment of the overall UW student population. Over the last ten years, the UW System (UWS) has revised many of its policies and procedures in an effort to improve the transfer process and better accommodate transfer students. This report focuses on access, enrollment, and outcomes of transfer students.

The number of transfer students who enrolled in the UW System reached a ten year high of 9,684 in Fall 1996, followed by a slight decline to 9,486 in Fall 1997, a decrease of 2 percent. The number of transfer applicants also decreased in Fall 1997, a 3.7 percent decrease to 15,922 from Fall 1996, as did transfer admits, down 1.9 percent to 12,798.

The transfer student enrollment increases between Fall 1992 and 1996 primarily consisted of non-UWS transfers - transfers from institutions outside the UW System (Wisconsin Technical College System (WTCS), Wisconsin private, out-of-state, and international). The proportion of non-UWS transfers increased from 44 percent in Fall 1987 to 59 percent in Fall 1996 while the proportion of transfers between UWS institutions decreased from 56 to 41 percent. Between 1987 and 1996, WTCS transfers more than doubled.

Transfer students comprise a significant portion of the UW System undergraduate population. One in four of the entering degree-seeking undergraduates each year are transfer students; new freshmen comprise the remaining three quarters of the entering class. The transfer student proportion increases as students reach graduation. Each year, one third of the students who receive their first bachelors degree from UW System institutions began at the degree-granting institution as a transfer student.

The largest portion of Fall 1996 UW System transfer students had a Transfer GPA (at the sending institution) in the 2.5 - 2.99 range (26%) and in the 3.0 - 3.49 range (23%). Transfer students, who continue to enroll, perform well. One year after transfer, the Fall 1996 cohort had GPA's (at the receiving institution) in the 2.5 - 2.99 range (26%) and in the 3.0 - 3.49 range (28%). Twenty-two percent of the transfer cohort had GPA's in the 3.5 - 4.0 range one year after transfer.

Of the transfer students who entered the UW System in Fall 1991, 58 percent graduated within five years or were retained into the sixth year. Students who transferred at the junior level had the highest combined five year graduation/six year retention rate, 73 percent for the Fall 1991 cohort. Students who transferred from the UW Colleges had the highest combined graduation/retention rate, 72 percent for the Fall 1991 cohort.

University of Wisconsin System
Office of Policy Analysis and Research

<http://www.uwsa.edu/opar/>

1546 Van Hise Hall
1220 Linden Drive
Madison, Wisconsin 53706
(608) 262-6441

TABLE OF CONTENTS

	PAGE
Introduction	1
Section I: Transfer Student Access	
Transfer Applications	1
Transfer Admissions	1
Section II: Transfer Student Enrollment	
Transfer Enrollment and Yield Rates	2
Transfers by Type of Sending Institution	2
Out-of-State Transfers by Residency Status	4
Transfer Students in the Entering Class	4
Transfer Students in the Graduating Class	4
Classification of Transfer Students	5
Section III: Transfer Student Outcomes	
GPA's of Transfer Students	6
Graduation and Retention Rates of Transfer Students	7
Appendix A: Transfer Applications by Residency Status and Institution	9
Transfer Admissions by Residency Status and Institution	9
Appendix B: Transfer Enrollment and Yield Rates by Institution	10
Appendix C: Transfers to UWS Institutions by Type of Sending Institution	11
Appendix D: Transfer Students in the Entering Class by Institution	12
Appendix E: Transfer Students in the Graduating Class by Institution	13
Appendix F: Transfer Students by Classification and Institution	14
Appendix G: Graduation and Retention Rates of Transfer Students by Institution	15
Endnotes	16

INTRODUCTION

The UW System (UWS) recognizes that transfer students constitute an important segment of the student population¹. The mission of one of the System institutions, the UW Colleges, is to serve as a “transfer institution”. Over the last ten years, the UW System has revised its transfer policy to better accommodate transfer students. Also, the Transfer Information System (TIS) was developed to provide transfer students and their advisors with current and accurate transfer information. This report focuses on transfer student access, enrollment, and outcomes.²

SECTION I: TRANSFER STUDENT ACCESS

Transfer Applications The number of transfer students applying to the UW System fluctuated in the 16,000 to 17,000 range between Fall 1989 and 1997 (Table 1). In Fall 1997, the number of transfer applicants reached a ten year low at 15,922, a 3.7 percent decrease from Fall 1996. This was the second consecutive year in which the number of transfer student applicants declined. See Appendix A-Table 1 for Transfer Applications by Residency Status and Institution.

Table 1
UW System Transfer Applicants³
Fall 1989 to Fall 1997

	EM II ⁴					EM III					% Change 1996 to 1997
	Fall 1989	Fall 1990	Fall 1991	Fall 1992	Fall 1993	Fall 1994	Fall 1995	Fall 1996	Fall 1997		
WI Res	11,274	11,754	12,172	11,217	11,764	11,196	12,211	12,044	11,633	-3.4%	
Non-Res	3,251	3,137	3,384	3,413	3,562	3,539	3,313	2,941	2,756	-6.3%	
Minn. Comp.	1,498	1,654	1,166	1,433	1,383	1,423	1,591	1,552	1,533	-1.2%	
Total	16,023	16,545	17,217	16,063	16,709	16,158	17,115	16,537	15,922	-3.7%	

Transfer Admissions Table 2 shows the number of transfer students admitted to the UW System between Fall 1989 and Fall 1997. Transfer admits reached a low of 10,352 in 1992, a period of enrollment caps enacted during Enrollment Management II. After increases since 1992, there was a slight decrease in transfer admits in 1997, down 1.9 percent to 12,798. This decrease may have resulted from the decline in transfer applicants. See Appendix A-Table 2 for Transfer Admissions by Residency Status and Institution.

Table 2
UW System Transfer Admits⁵
Fall 1989 to Fall 1997

	EM II					EM III					% Change 1996 to 1997
	Fall 1989	Fall 1990	Fall 1991	Fall 1992	Fall 1993	Fall 1994	Fall 1995	Fall 1996	Fall 1997		
WI Res	7,843	8,319	8,465	7,636	8,341	8,419	9,679	9,828	9,594	-2.4%	
Non-Res	1,882	1,794	1,876	1,800	2,011	1,994	2,095	1,941	1,910	-1.6%	
Minn. Comp.	918	1,061	1,084	916	848	1,050	1,200	1,279	1,294	1.2%	
Total	10,643	11,174	11,425	10,352	11,200	11,463	12,974	13,048	12,798	-1.9%	

SECTION II: TRANSFER STUDENT ENROLLMENT

Transfer Enrollment and Yield Rates

The number of transfer students who enrolled in the UW System fluctuated between Fall 1987 and Fall 1997 (Table 3). After four years of increases, transfer student enrollment reached a ten year high of 9,684 in Fall 1996, followed by a slight decline to 9,486 in Fall 1997, a decrease of 2 percent. Transfer student enrollments are affected by enrollment management policies, the number of transfer applicants, and factors such as the economy, marketing, and population demographics.

The overall yield rate (ratio of enrollees to admits) for transfer students was 74 percent in Fall 1997, about the same yield rate as in previous years. The yield rate for transfer students who are Wisconsin residents was 78 percent. Nearly 80 percent of transfer students are Wisconsin residents, 7,506 in Fall 1997. See Appendix B for Transfer Enrollment and Yield Rates by Institution.

Table 3
UW System Transfer Student Enrollment
Fall 1987 to Fall 1997

	EM I Fall 1987	Fall 1988	Fall 1989	Fall 1990	EM II Fall 1991	Fall 1992	Fall 1993	Fall 1994	EM III Fall 1995	Fall 1996	Fall 1997	Fall 1997 Yield Rate
WI Res	6,449	6,341	6,174	6,524	6,923	6,101	6,599	6,767	7,389	7,678	7,506	78%
Non-Res	872	939	981	933	943	912	991	997	1,100	1,130	1,087	57%
Minn. Comp.	582	569	622	731	778	626	560	701	739	876	893	69%
Total	7,903	7,849	7,777	8,188	8,644	7,639	8,150	8,465	9,228	9,684	9,486	74%

Transfers by Type of Sending Institution

The transfer student enrollment increases between Fall 1992 and 1996 primarily consisted of transfers from institutions outside the UW System - Wisconsin Technical College System (WTCS), Wisconsin private, out-of-state, and international (Table 4). The proportion of non-UWS transfers increased from 44 percent in Fall 1987 to 59 percent in Fall 1996 while the proportion of intra-UWS transfers decreased from 56 to 41 percent. Between 1987 and 1996, WTCS transfers more than doubled. Much of the WTCS increase can be attributed to changes in transfer policy which allow students to transfer selected coursework from WTCS associate degree programs.⁶

The decline in the transfer student enrollment in Fall 1997 was spread across nearly all types of sending institutions. Transfers among UW Four-year institutions decreased (-88, -3.8%) as did transfers from the UW Colleges (UWC) to UW Four-year institutions (-28, -2.0%) and transfers from the WTCS (-34, -2.2%). The largest decline was in students transferring from Wisconsin private colleges (-120, -16.6%). The only significant increase was in transfers from UW Four-year institutions to UW Colleges (106, 46.7%).

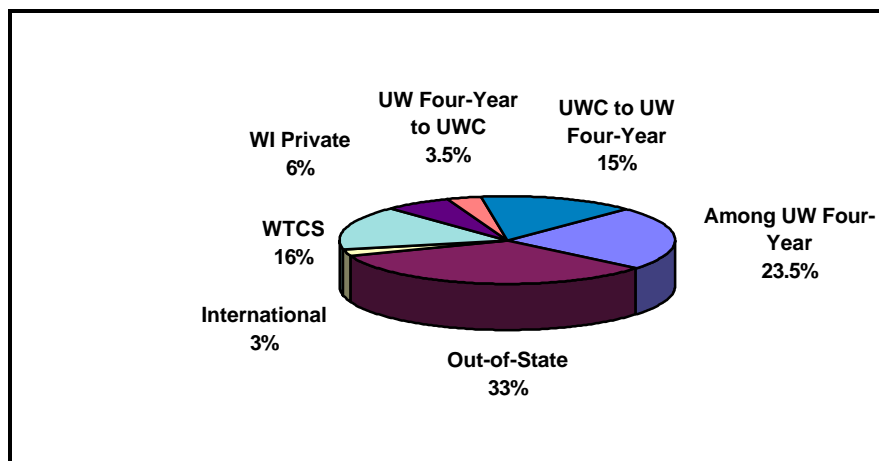
Table 4
UW System Transfers by Type of Sending Institution⁷
Fall 1987 to Fall 1997

	Fall 1987	Fall 1988	Fall 1989	Fall 1990	Fall 1991	Fall 1992	Fall 1993	Fall 1994	Fall 1995	Fall 1996	Fall 1997	% Change 1996 to 1997
Intra-UWS												
Among 4-year	2,437	2,236	2,083	1,952	2,115	1,765	1,908	1,970	2,243	2,316	2,228	(-3.8%)
UWC to 4-year	1,512	1,517	1,508	1,561	1,634	1,395	1,444	1,531	1,585	1,432	1,404	(-2.0%)
4-year to UWC	468	431	373	479	384	321	319	260	299	227	333	(46.7%)
UW-Extension	9	15	11	9	15	15	19	22	27	17	12	-
Total Intra-UWS Transfers	4,426	4,199	3,975	4,001	4,148	3,498	3,690	3,783	4,154	3,992	3,977	(-0.4%)
Percent Intra-UWS Transfers	56%	53%	51%	49%	48%	46%	45%	45%	45%	41%	42%	
Non-UWS												
WTCS	682	741	752	895	932	958	1,046	1,079	1,200	1,565	1,531	(-2.2%)
WI Private	411	435	443	525	564	500	524	564	656	722	602	(-16.6%)
Out-of-State	2,232	2,328	2,458	2,615	2,844	2,503	2,700	2,884	3,017	3,145	3,134	(-0.3%)
International	148	138	142	145	152	172	184	152	192	260	240	(-7.7%)
Other	4	8	7	7	4	8	6	3	9	0	2	-
Total Non-UWS Transfers	3,477	3,650	3,802	4,187	4,496	4,141	4,460	4,682	5,074	5,692	5,509	(-3.2%)
Percent Non-UWS Transfers	44%	47%	49%	51%	52%	54%	55%	55%	55%	59%	58%	
All TRANSFERS	7,903	7,849	7,777	8,188	8,644	7,639	8,150	8,465	9,228	9,684	9,486	(-2.0%)

Note: Other includes transfers from U.S. territories and Wisconsin County Teachers Colleges.

Figure 1 illustrates the percentage of transfers to the UW System for Fall 1997 by type of sending institution. While transfer among UWS institutions totaled over 40 percent, a large share of transfers come from out-of-state institutions (33%). WTCS transfers have grown to 16 percent of the transfer total. See Appendix C for Transfers to UWS Institutions by Type of Sending Institution.

Figure 1
Transfers to the UW System by Type of Sending Institution
Fall 1997



**Out-of State
Transfers by
Residency Status**

While one-third of transfer students come from out-of-state institutions (Figure 1), over half of this group were returning Wisconsin residents - 50.6 percent in Fall 1997 (Table 5). Minnesota and Michigan compact students accounted for 25.6 percent of the Fall 1997 out-of-state transfers.

**Table 5
UW System Transfers From Out-of-State Institutions by Residency Status
Fall 1993, 1995, and 1997**

	Fall 1993		Fall 1995		Fall 1997	
	Number	Percent	Number	Percent	Number	Percent
WI Resident	1,454	53.9%	1,533	50.8%	1,585	50.6%
Compact	502	18.6%	650	21.6%	801	25.5%
Non-Resident	744	27.5%	834	27.6%	748	23.9%
Total	2,700		3,017		3,134	

**Transfer Students in
the Entering Class**

Transfers comprise one in four of the new degree-seeking undergraduates in the UW System each year; new freshmen comprise the remaining three quarters of the entering class. From Fall 1987 to 1988, the transfer share dropped to 21.8 percent; it increased steadily to reach 28.1 percent in Fall 1996, but decreased to 26.8 percent in Fall 1997 (Table 6). See Appendix D for Transfer Students in the Entering Class by Institution.

**Table 6
UW System Transfer Students in the Entering Class
Fall 1987 to Fall 1997**

	1987	1988	1989	1990	1991	1992	1993	1994	1995	1996	1997
From UWC	4.3%	4.2%	4.6%	4.8%	5.0%	4.6%	4.6%	4.9%	4.8%	4.2%	4.0%
Other UWS	8.4%	7.4%	7.5%	7.6%	7.8%	6.9%	7.2%	7.2%	7.8%	7.4%	7.2%
Non-UWS	10.0%	10.2%	11.6%	13.0%	13.9%	13.7%	14.2%	15.1%	15.4%	16.5%	15.6%
Total Transfers	22.7%	21.8%	23.7%	25.4%	26.7%	25.2%	26.0%	27.2%	28.0%	28.1%	26.8%
Total New Freshmen	77.3%	78.2%	76.3%	74.6%	73.3%	74.8%	74.0%	72.8%	72.0%	71.9%	73.2%

**Transfer Students in
the Graduating Class**

Each year, one third of the students who receive their first bachelors degree began at the degree-granting UWS institution as a transfer student. Of the 1996-97 academic year graduates, 18.1 percent transferred from other UWS institutions, 16.3 percent transferred from institutions outside the UWS, and 63 percent began at the degree-granting institution as a new freshman (Table 7). The remaining group ("Other") includes students who began as special (non-degree) students. See Appendix E for Transfer Students in the Graduating Class by Institution.

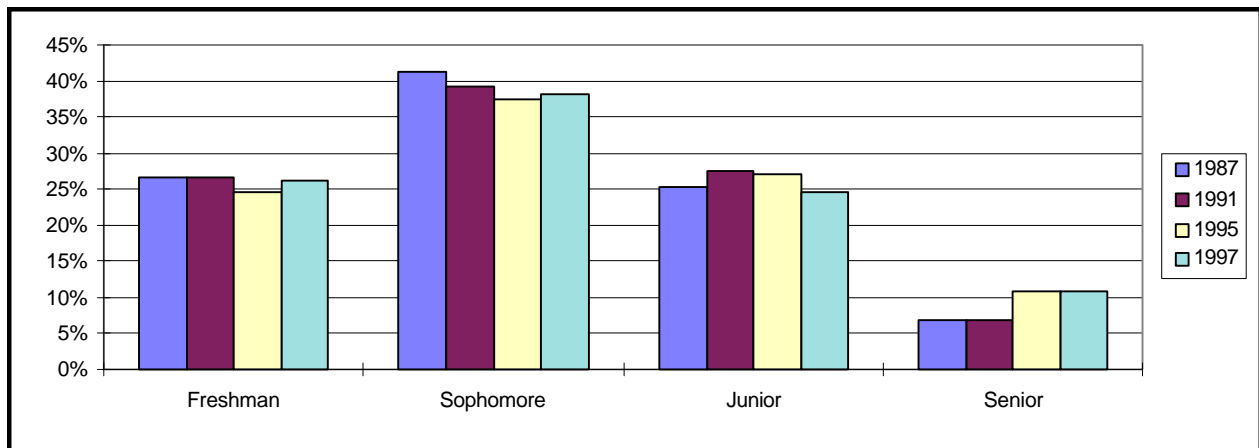
**Table 7
UW System Transfer Students in the Graduating Class**

	1993-94	1994-95	1995-96	1996-97
Intra-UWS	18.5%	18.4%	17.4%	18.1%
Non-UWS	15.5%	15.5%	15.5%	16.3%
Total Transfers	34.0%	34.0%	32.9%	34.4%
Total New Freshmen	63.4%	63.4%	64.7%	63.0%
Total Other	2.5%	2.7%	2.4%	2.5%

Classification of Transfer Students

The largest number of transfer students enter at the sophomore level (38% in Fall 1997). About one-fourth of UW System transfer students are classified as freshmen at the point of transfer, another quarter are classified as juniors, and 11 percent are seniors (Figure 2). These proportions have remained relatively constant for the last ten years. See Appendix F for Transfer Students by Classification and Institution.

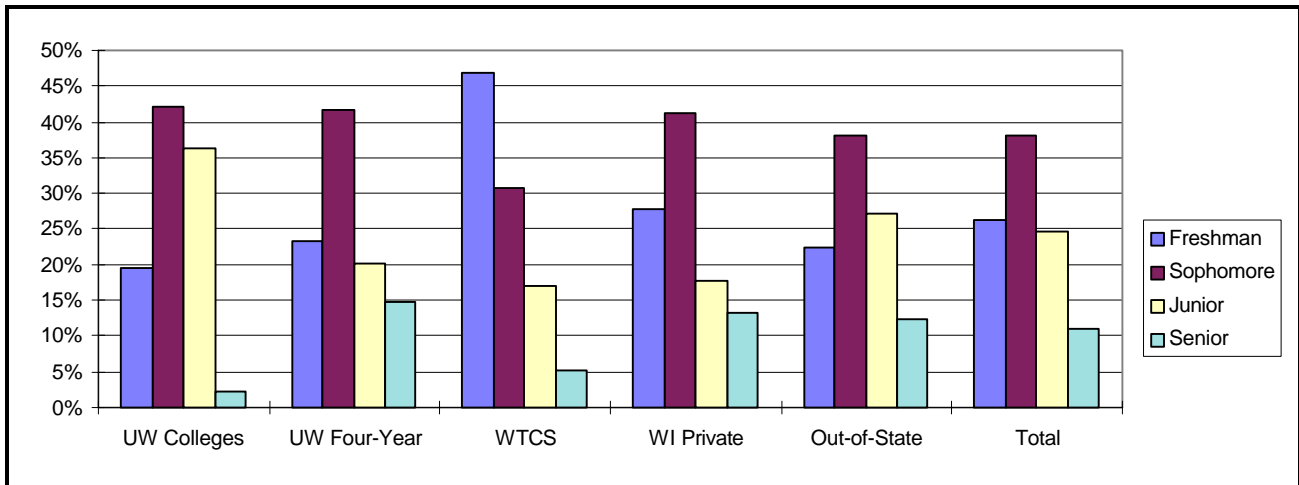
Figure 2
UW System Transfers by Student Classification⁸
Fall 1987, 1991, 1995, and 1997



The classification of transfer students varies by the type of sending institution. The largest proportion of students transferred at the sophomore level from all types of institutions, except for WTCS transfers. In Fall 1997, 47 percent of WTCS transfer students were classified as freshmen while 31 percent were classified as sophomores (Figure 3).

Figure 3

**UW System Transfers by Type of Sending Institution and Student Classification
Fall 1997**

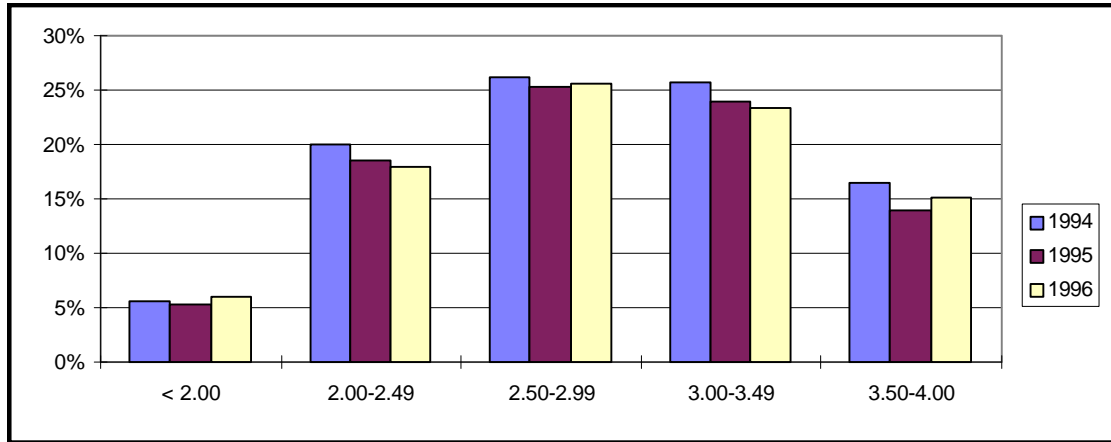


SECTION III: TRANSFER STUDENT OUTCOMES

GPA's of Transfer Students

Figure 4 shows the Transfer GPA of students who transferred in Fall 1994, 1995, and 1996. The Transfer GPA is the student's GPA at the sending institution. In Fall 1996, the largest group of students had a Transfer GPA in the 2.5 - 2.99 range (26%) and in the 3.0 - 3.49 range (23%).

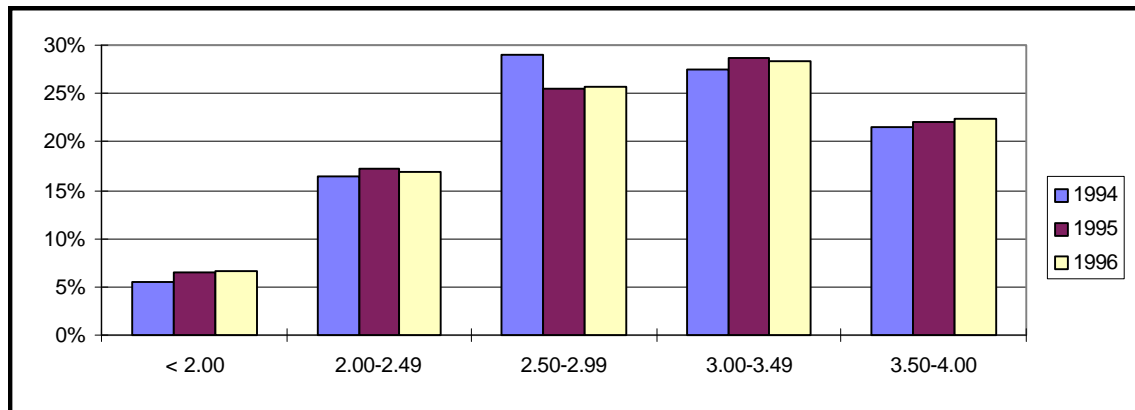
Figure 4
Transfer GPA (at Sending Institution)⁹
Fall 1994, 1995, and 1996 Cohorts



Note: Figure 4 excludes all students transferring to UW-Platteville and UW Colleges.

Transfer students, who continue to enroll, perform well after transferring. Figure 5 shows the GPA earned at the receiving institution, after one year of enrollment, for the Fall 1994, 1995, and 1996 transfer cohorts. In Fall 1996, the largest group of transfer students had a GPA in the 2.5 - 2.99 range (26%) and in the 3.0 - 3.49 range (28%). Twenty-two percent of the students had GPA's in the 3.5 - 4.0 range.

Figure 5
GPA - One Year After Transfer (at Receiving Institution)
Fall 1994, 1995, and 1996 Cohorts



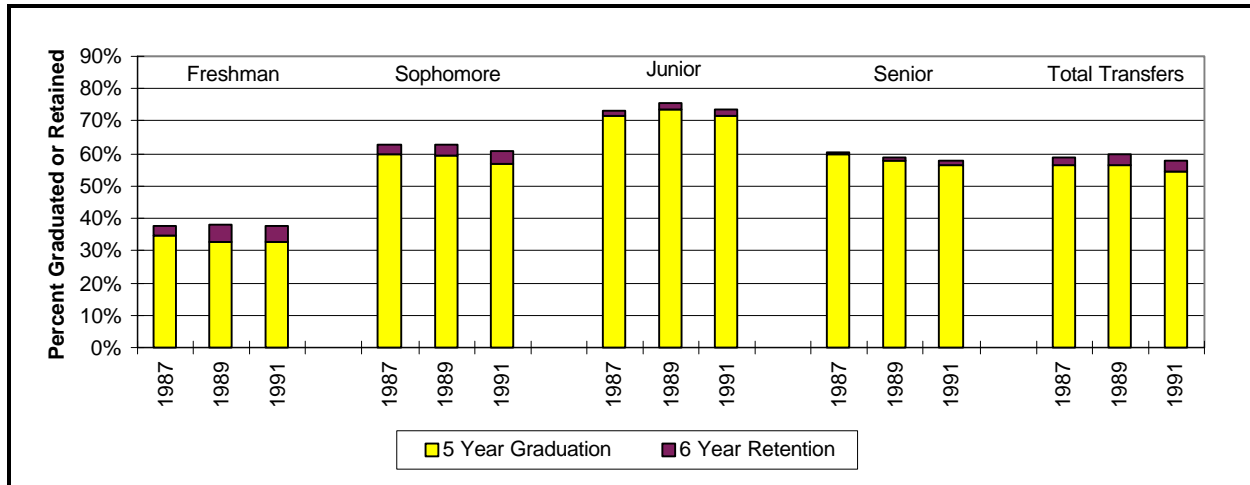
Note: Figure 5 excludes all students transferring to UW-Platteville and UW Colleges.

Graduation and Retention Rates of Transfer Students

Figure 6 shows the percentage of UW System transfer students who graduated within five years of transfer and the percentage of transfer students who were retained in the sixth year, for the Fall 1987, 1989, and 1991 transfer cohorts. A combination of the five year graduation rate and six year retention rate is used to predict the eventual graduation rate for transfer students. For the Fall 1991 cohort, the combined rate for all transfer students was 58 percent.

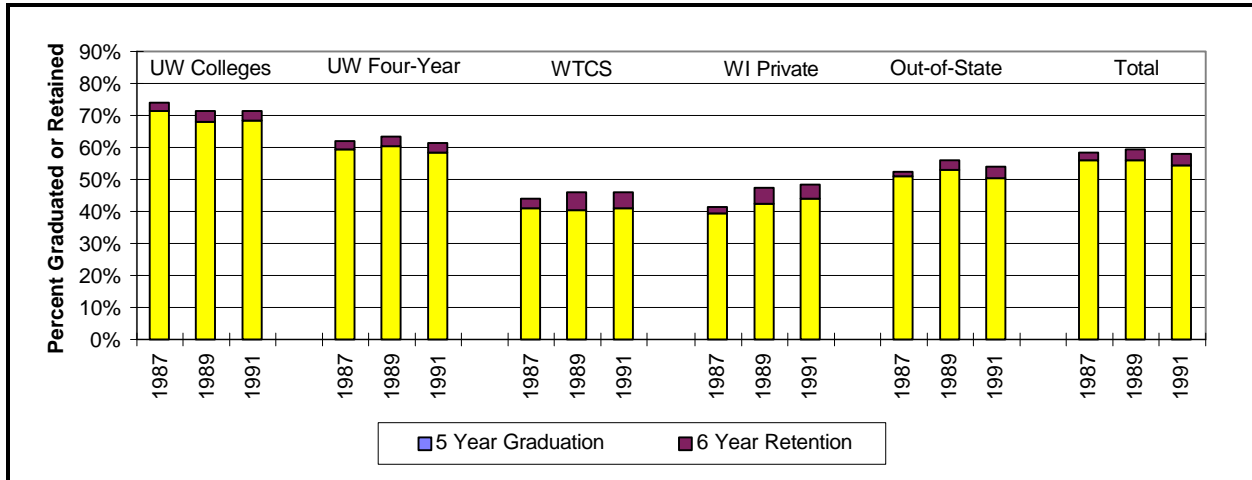
Graduation and retention rates differ for students who transfer at different points in their academic careers. Students who transferred at the junior level had the highest combined graduation/retention rate, 73 percent for the Fall 1991 cohort. See Appendix G for Graduation and Retention Rates of Transfer Students by Institution.

Figure 6
Graduation and Retention Rates of UW System Transfer Students by Classification¹⁰
Fall 1987, 1989, and 1991 Cohorts



Graduation and retention rates differ based on the type of institution from which the students transferred (Figure 7). Students who transferred from the UW Colleges had the highest combined graduation/retention rate, 72 percent for the Fall 1991 cohort.

Figure 7
Graduation and Retention Rates of UW System Transfer Students
by Type of Sending Institution
Fall 1987, 1989, and 1991 Cohorts



**Appendix A - Table 1
Transfer Applications by Residency Status and Institution
Fall 1997**

	Wisconsin Resident		Non-Resident		Minn. Comp.		All Transfers	% Change 1996 to 1997
	Number	Percent	Number	Percent	Number	Percent		
UW-Madison	2,072	56%	1,347	36%	276	7%	3,695	-7.4%
UW-Milwaukee	2,459	86%	368	13%	43	1%	2,870	-1.5%
UW-Eau Claire	814	70%	144	12%	213	18%	1,171	-13.2%
UW-Green Bay	851	85%	133	13%	15	2%	999	3.5%
UW-La Crosse	748	78%	71	7%	145	15%	964	-2.3%
UW-Oshkosh	1,228	92%	97	7%	10	1%	1,335	1.0%
UW-Parkside	473	75%	158	25%	3	0%	634	21.2%
UW-Platteville	376	72%	132	25%	14	3%	522	-5.3%
UW-River Falls	316	46%	27	4%	343	50%	686	-0.3%
UW-Stevens Point	1,031	86%	102	8%	72	6%	1,205	-10.9%
UW-Stout	628	69%	48	5%	240	26%	916	-15.1%
UW-Superior	222	45%	40	8%	227	46%	489	0.4%
UW-Whitewater	914	84%	158	15%	13	1%	1,085	-19.5%
UW Colleges	874	94%	58	6%	1	0%	933	19.2%
Total*	13,006	74%	2,883	16%	1,615	9%	17,504	-4.6%

* Total includes multiple applications.

**Appendix A - Table 2
Transfer Admissions by Residency Status and Institution
Fall 1997**

	Wisconsin Resident		Non-Resident		Minn. Comp.		All Transfers	% Change 1996 to 1997
	Number	Percent	Number	Percent	Number	Percent		
UW-Madison	1,408	58%	824	34%	179	7%	2,411	1.6%
UW-Milwaukee	1,895	88%	228	11%	26	1%	2,149	0.7%
UW-Eau Claire	688	68%	134	13%	187	19%	1,009	-17.4%
UW-Green Bay	712	87%	95	12%	11	1%	818	0.7%
UW-La Crosse	638	77%	58	7%	130	16%	826	2.0%
UW-Oshkosh	1,023	93%	70	6%	10	1%	1,103	-0.6%
UW-Parkside	385	75%	129	25%	2	0%	516	19.7%
UW-Platteville	320	72%	110	25%	12	3%	442	1.6%
UW-River Falls	260	47%	25	5%	269	49%	554	1.5%
UW-Stevens Point	859	85%	89	9%	68	7%	1,016	-8.8%
UW-Stout	570	69%	38	5%	215	26%	823	-13.5%
UW-Superior	220	45%	38	8%	226	47%	484	0.0%
UW-Whitewater	669	87%	90	12%	12	2%	771	-23.0%
UW Colleges	761	94%	49	6%	1	0%	811	21.8%
Total*	10,408	76%	1,977	14%	1,348	10%	13,733	-2.5%

* Total includes multiple admissions.

Appendix B
Transfer Enrollment and Yield Rates by Institution
Fall 1997

	Wisconsin Resident		Non-Resident		Minn. Comp.		All Transfers	Yield Rate
	Number	Percent	Number	Percent	Number	Percent		
UW-Madison	974	64%	420	28%	121	8%	1,515	63%
UW-Milwaukee	1,506	93%	104	6%	12	1%	1,622	75%
UW-Eau Claire	393	65%	96	16%	120	20%	609	60%
UW-Green Bay	473	91%	41	8%	7	1%	521	64%
UW-La Crosse	425	79%	44	8%	72	13%	541	65%
UW-Oshkosh	681	95%	29	4%	5	1%	715	65%
UW-Parkside	317	77%	92	22%	2	0%	411	80%
UW-Platteville	270	80%	64	19%	4	1%	338	76%
UW-River Falls	158	45%	11	3%	184	52%	353	64%
UW-Stevens Point	594	86%	53	8%	41	6%	688	68%
UW-Stout	406	69%	23	4%	158	27%	587	71%
UW-Superior	131	41%	27	9%	158	50%	316	65%
UW-Whitewater	493	90%	45	8%	7	1%	545	71%
UW Colleges	685	94%	38	5%	2	0%	725	89%
Total*	7,506	79%	1,087	11%	893	9%	9,486	69%

* Total yield rate includes multiple admissions.

Appendix C
Transfers to UWS Institutions by Type of Sending Institution
Fall 1997

	Intra-System Transfers				Non-UWS Transfers					All Transfers
	Among 4-year	UWC to 4-year	Other UWS*	Total	WTCS	WI Private	Out-of-State	Internat/Other	Total	
UW-Madison	408	154	6	568 (37%)	180	59	635	73	947 (63%)	1,515
UW-Milwaukee	488	252	2	742 (46%)	351	166	333	30	880 (54%)	1,622
UW-Eau Claire	162	95	1	258 (42%)	39	26	210	76	351 (58%)	609
UW-Green Bay	146	115		261 (50%)	77	48	121	14	260 (50%)	521
UW-La Crosse	122	107		229 (42%)	101	34	174	3	312 (58%)	541
UW-Oshkosh	181	237	1	419 (59%)	122	42	123	9	296 (41%)	715
UW-Parkside	87	11		98 (24%)	96	33	182	2	313 (76%)	411
UW-Platteville	82	54	1	137 (41%)	61	20	119	1	201 (59%)	338
UW-River Falls	66	26		92 (26%)	14	6	238	3	261 (74%)	353
UW-Stevens Point	155	169	1	325 (47%)	99	43	206	15	363 (53%)	688
UW-Stout	155	65		220 (37%)	114	13	231	9	367 (63%)	587
UW-Superior	30	16		46 (15%)	23	10	237		270 (85%)	316
UW-Whitewater	146	103		249 (46%)	116	42	132	6	296 (54%)	545
UW Colleges			333	333 (46%)	138	60	193	1	392 (54%)	725
Total	2,228	1,404	345	3,977 (42%)	1,531	602	3,134	242	5,509 (58%)	9,486

* Includes transfers from UW 4-year institutions to UW Colleges and from UW-Extension to other UWS institutions.

Appendix D
Transfer Students in the Entering Class by Institution
Fall 1997

	UWC Transfers	Other UWS Transfers	Non-UWS Transfers	Total Transfers	Total New Freshmen	Total Entering Class
UW-Madison	2.1%	5.6%	12.8%	20.5%	79.5%	7,395
UW-Milwaukee	6.1%	11.9%	21.5%	39.5%	60.5%	4,103
UW-Eau Claire	3.4%	5.9%	12.6%	21.9%	78.1%	2,780
UW-Green Bay	7.8%	9.9%	17.6%	35.3%	64.7%	1,474
UW-La Crosse	4.8%	5.4%	13.9%	24.1%	75.9%	2,247
UW-Oshkosh	9.6%	7.3%	12.0%	28.9%	71.1%	2,473
UW-Parkside	0.9%	7.1%	25.4%	33.4%	66.6%	1,230
UW-Platteville	4.1%	6.2%	15.0%	25.3%	74.7%	1,336
UW-River Falls	1.7%	4.4%	17.3%	23.4%	76.6%	1,505
UW-Stevens Point	7.5%	7.0%	16.2%	30.7%	69.3%	2,239
UW-Stout	3.6%	8.4%	20.0%	32.0%	68.0%	1,837
UW-Superior	2.4%	4.5%	40.4%	47.3%	52.7%	668
UW-Whitewater	4.2%	5.9%	12.0%	22.1%	77.9%	2,459
UW Colleges		9.1%	10.8%	19.9%	80.1%	3,641
Total	4.0%	7.2%	15.6%	26.8%	73.2%	35,387

Appendix E
Transfer Students in the Graduating Class by Institution
1996-97

	Intra-System Transfers	Non-UWS Transfers	Total Transfers	Total New Freshmen	Total Other	Total Graduating Class*
UW-Madison	11.1%	16.6%	27.7%	70.4%	2.0%	5,339
UW-Milwaukee	29.3%	22.8%	52.2%	43.9%	3.9%	2,341
UW-Eau Claire	14.9%	10.8%	25.7%	72.9%	1.5%	1,515
UW-Green Bay	25.1%	13.9%	39.0%	57.3%	3.6%	797
UW-La Crosse	13.0%	12.7%	25.7%	73.1%	1.2%	1,295
UW-Oshkosh	30.4%	10.3%	40.7%	56.4%	2.9%	1,444
UW-Parkside	15.9%	25.8%	41.7%	52.4%	5.9%	473
UW-Platteville	15.6%	9.8%	25.4%	72.3%	2.3%	787
UW-River Falls	8.2%	21.2%	29.4%	67.5%	3.1%	904
UW-Stevens Point	23.8%	11.2%	35.0%	62.7%	2.3%	1,392
UW-Stout	21.3%	26.2%	47.5%	49.9%	2.7%	1,161
UW-Superior	11.2%	38.1%	49.3%	48.7%	2.1%	339
UW-Whitewater	19.9%	10.5%	30.4%	67.1%	2.4%	1,534
Total	18.1%	16.3%	34.4%	63.0%	2.5%	19,321

* Graduating class includes only first bachelors degree recipients.

Appendix F
Transfer Students by Classification and Institution
Fall 1997

	Freshman	Sophomore	Junior	Senior	All Transfers
UW-Madison	3%	42%	37%	17%	1,515
UW-Milwaukee	20%	43%	25%	13%	1,622
UW-Eau Claire	30%	37%	20%	13%	609
UW-Green Bay	18%	35%	29%	18%	521
UW-La Crosse	38%	37%	23%	2%	541
UW-Oshkosh	30%	38%	25%	7%	715
UW-Parkside	34%	34%	23%	10%	411
UW-Platteville	32%	33%	22%	13%	338
UW-River Falls	23%	41%	29%	7%	353
UW-Stevens Point	28%	34%	27%	10%	688
UW-Stout	33%	33%	22%	12%	587
UW-Superior	27%	30%	27%	16%	316
UW-Whitewater	19%	50%	26%	5%	545
UW Colleges	71%	29%	n/a	n/a	725
Total	26%	38%	25%	11%	9,486

Appendix G
Graduation and Retention Rates of Transfer Students By Institution
Fall 1991 Cohort

	# of Students in Cohort	Five Year Graduation Rate	Six Year Retention Rate	Combined Graduation/ Retention Rate
UW-Madison	1,371	73.8%	3.0%	76.8%
UW-Milwaukee	1,744	43.1%	5.0%	48.1%
UW-Eau Claire	464	60.5%	2.0%	62.5%
UW-Green Bay	431	53.5%	1.2%	54.7%
UW-La Crosse	355	56.9%	5.3%	62.2%
UW-Oshkosh	702	64.5%	4.0%	68.5%
UW-Parkside	279	38.3%	2.5%	40.8%
UW-Platteville	359	51.2%	2.5%	53.7%
UW-River Falls	399	57.6%	1.5%	59.1%
UW-Stevens Point	479	68.6%	2.3%	70.9%
UW-Stout	617	63.0%	3.4%	66.4%
UW-Superior	291	39.1%	4.5%	43.6%
UW-Whitewater	409	65.2%	1.7%	66.9%
UW Four-Year Institution Total*	7,900	57.6%	3.4%	61.0%

* Total excludes students who transferred to UW Colleges in Fall 1991.

ENDNOTES

¹ For UW System reporting purposes, a transfer student is defined as an undergraduate student who transfers credit from another institution of higher education (other than credits earned during a summer session or while enrolled in high school) to the receiving UWS institution. In Fall 1995, this definition was clarified to include all combination-reentry students; students who initially enrolled at a UWS institution, transferred to another institution, earned credits, and returned to the initial institution.

² The source of the application and admission data is the Multiple Applications and Admissions Data (MAAD) Base, which has comparable data beginning in 1989. The source of enrollment and outcomes data is the Central Data Request (CDR) Data Base.

³ An applicant is an individual who submitted an application to one or more UWS institutions. Applicant data represent an unduplicated count of individuals who submitted applications. Applications data show a duplicated count (multiple) of applications.

⁴ UW System has implemented three periods of Enrollment Management (EM): EM I from 1987-1990, EM II from 1991-1994, and EM III from 1995-2000.

⁵ An admit is an individual who was admitted to one or more UWS institutions. Admit data represent an unduplicated count of individuals who were admitted. Admissions data show a duplicated count (multiple) of admissions. Both admit and admissions data exclude applicants who did not complete an application or who withdrew their application before the institution made an admission decision.

⁶ Current UWS transfer policy allows acceptance of the following three types of WTCS coursework. Students transferring from the three college parallel programs at Madison, Milwaukee, and Nicolet Area Technical Colleges may transfer up to 72 credits of coursework. UWS institutions may accept up to 15 credits of WTCS non-college parallel general education credits. In cases where program articulation agreements have been developed between WTCS and UWS institutions, students may transfer related occupational and technical credits.

⁷ The type of sending institution is based on the last institution attended by the student prior to transfer. For example, a student who earned credit at a UW College and later at a WTCS institution, and then transferred to a different UWS institution, would be classified as a WTCS transfer student.

⁸ Student classification is based on the total number of degree credits earned. While credit ranges differ among UW institutions, the following approximate ranges are used: Freshman 0-29 credits, Sophomore 30-59 credits, Junior 60-89 credits, and Senior 90 or more credits.

⁹ UWS institutions differ in the reporting of Transfer GPA. About half of the institutions report a Transfer GPA based on coursework at the institution last attended by the student; the other half report a Transfer GPA based on coursework at all institutions previously attended. Transfer GPA is not currently reported for students transferring to UW-Platteville or UW Colleges. In addition, Transfer GPA was unavailable for about 10% of the students transferring to other UW institutions.

¹⁰ Graduation/retention studies of new freshman cohorts often use six year graduation and seven year retention rates to predict eventual graduation. Because the largest proportion of UW System transfer students enter at the sophomore level, five year graduation and six year retention rates are used in UW System reporting.