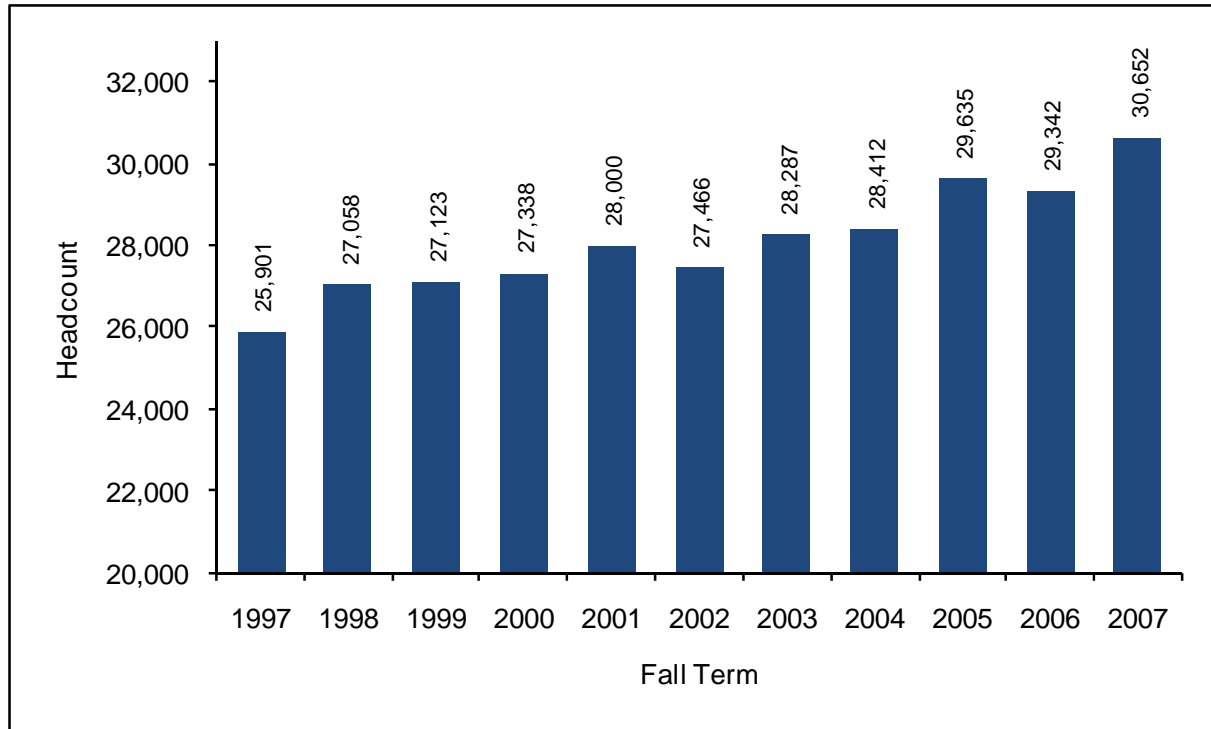




Informational Memorandum

The New Freshman Class: Fall 2007

**UW System New Freshman Headcount
Fall 1997 to Fall 2007**



Highlights

Percentage of fall 2007 UW System new freshmen who:

- are Wisconsin residents 81%
- are women 53%
- are students of color 11%
- were 19 and under 95%
- scored above the national ACT average score of 21 64%
- were in the top quartile of their high school classes 45%

The University of Wisconsin System
Office of Policy Analysis and Research
March 2008

<http://www.uwsa.edu/opar/>

1534 Van Hise Hall
1220 Linden Drive
Madison, WI 53706
(608) 262-6441

APPLICATION AND ADMISSION

In fall 2007, 61,287 individuals applied to UW institutions as new freshmen. Among these individuals, 56,571 applicants submitted the required documents to complete the application and 48,618 were admitted to at least one UW institution. A total of 30,652 new freshmen enrolled in the UW System.

The total number of new freshmen applicants for fall 2007 increased 41.8 percent from ten years ago and 16.4 percent from five years ago. The systemwide admission rate declined 5.4 percentage points from 91.3 percent in fall 1997 to 85.9 percent in fall 2007. The systemwide enrollment rate also declined 5.2 percentage points from 68.2 percent in fall 1997 to 63.0 percent in fall 2007.

Resident Status

Of the 61,287 new freshmen applicants in fall 2007, 60.4 percent (37,025) were Wisconsin residents, 26.4 percent (16,190) were non-residents, and 13.2 percent (8,072) potentially qualified for the Minnesota reciprocity program (Table 1). Compared to the rates ten and five years ago, the proportion of non-resident applicants increased while the proportion of Wisconsin resident applicants decreased. See Appendix A for applications, admissions, and enrollment by resident status and UW institution.

Wisconsin resident new freshmen applicants had the highest admission rate (94.4%) and enrollment rate (75.4%) in fall 2007. Non-resident new freshmen applicants had the lowest admission rate (69.6%) and enrollment rate (31.1%) in fall 2007. This was also true in fall 1997 and fall 2002.

Table 1
UW System New Freshmen Applicants, Admissions, and Enrollment
by Resident Status

		# Applicants		# Admitted	% Admitted	# Enrolled	% Enrolled
		Total	Completed				
Fall 1997	WI Resident	29,421	28,587	27,042	94.6%	21,252	78.6%
	Non-Resident	8,523	7,894	6,619	83.8%	2,152	32.5%
	Reciprocity	5,281	5,151	4,332	84.1%	2,497	57.6%
	Total	43,225	41,632	37,993	91.3%	25,901	68.2%
Fall 2002	WI Resident	33,448	31,629	29,255	92.5%	22,861	78.1%
	Non-Resident	12,246	10,815	7,596	70.2%	2,057	27.1%
	Reciprocity	6,976	6,703	4,986	74.4%	2,548	51.1%
	Total	52,670	49,147	41,837	85.1%	27,466	65.7%
Fall 2007	WI Resident	37,025	34,773	32,813	94.4%	24,732	75.4%
	Non-Resident	16,190	14,188	9,879	69.6%	3,070	31.1%
	Reciprocity	8,072	7,610	5,926	77.9%	2,850	48.1%
	Total	61,287	56,571	48,618	85.9%	30,652	63.0%

Note: Reciprocity includes Minnesota reciprocity students.

Gender

Female applicants comprised 53.1 percent (32,551) of the new freshmen applicants in fall 2007, while 46.9 percent (28,736) were male applicants (Table 2). Compared to ten years ago, male applicants made up a slightly larger share of total new freshmen applicants. In 1997, 2002, and 2007, female applicants maintained a higher admission rate while admitted males maintained a slightly higher enrollment rate. The enrollment rates for both admitted males and females in fall 2007 declined from ten years ago. See Appendix B for applications, admissions, and enrollment by gender and UW institution.

**Table 2
UW System New Freshmen Applicants, Admissions, and Enrollment
by Gender**

		# Applicants		# Admitted	% Admitted	# Enrolled	% Enrolled
		Total	Completed				
Fall 1997	Female	23,557	22,709	21,038	92.6%	14,271	67.8%
	Male	19,668	18,923	16,955	89.6%	11,630	68.6%
	Total	43,225	41,632	37,993	91.3%	25,901	68.2%
Fall 2002	Female	28,813	26,983	23,379	86.6%	15,311	65.5%
	Male	23,857	22,164	18,458	83.3%	12,155	65.9%
	Total	52,670	49,147	41,837	85.1%	27,466	65.7%
Fall 2007	Female	32,551	30,098	26,277	87.3%	16,321	62.1%
	Male	28,736	26,473	22,341	84.4%	14,331	64.1%
	Total	61,287	56,571	48,618	85.9%	30,652	63.0%

Race and Ethnicity

The proportion of applicants who were students of color increased 4.9 percentage points and the proportion of white applicants decreased 6.8 percentage points from ten years ago. White applicants maintained a higher admission rate and enrollment rate than applicants who were students of color in 1997, 2002, and 2007. The gap between students of color and white students in admission rate and enrollment rate in fall 2007 is larger than it was ten and five years ago. See Appendix C for applications, admissions, and enrollment by race/ethnicity and UW institution.

**Table 3
UW System New Freshmen Applicants, Admissions, and Enrollment
by Race/Ethnic Group**

		# Applicants		# Admitted	% Admitted	# Enrolled	% Enrolled
		Total	Completed				
Fall 1997	Students of Color	3,917	3,532	3,204	90.7%	1,920	59.9%
	White	38,174	37,188	34,110	91.7%	23,672	69.4%
	International	1,134	912	679	74.5%	309	45.5%
	Total	43,225	41,632	37,993	91.3%	25,901	68.2%
Fall 2002	Students of Color	5,806	4,978	4,206	84.5%	2,399	57.0%
	White	45,053	42,979	36,934	85.9%	24,794	67.1%
	International	1,811	1,190	697	58.6%	273	39.2%
	Total	52,670	49,147	41,837	85.1%	27,466	65.7%
Fall 2007	Students of Color	8,554	7,148	6,008	84.1%	3,271	54.4%
	White	49,971	47,229	41,212	87.3%	26,842	65.1%
	International	2,762	2,194	1,398	63.7%	539	38.6%
	Total	61,287	56,571	48,618	85.9%	30,652	63.0%

ENROLLMENT

Headcount

In fall 2007, 30,652 new freshmen enrolled in the UW System (Table 4). This is an increase of 1,310 (4.5%) from fall 2006 new freshmen enrollment. UW-Madison (5,994), UW-Milwaukee (4,598), and UW Colleges (4,190) enrolled almost half of the UW System new freshmen in fall 2007. The proportion of institutional enrollment made up of new freshmen ranged from 12.7 percent at UW-Superior to 32.2 percent at UW Colleges. See Appendix D for new freshmen enrollment by institution from fall 1972 to fall 2007.

Table 4
UW System New Freshman Headcount by Institution
Fall 2007

	#	% UWS New Freshmen	% Institutional Enrollment
Madison	5,994	19.6%	14.4%
Milwaukee	4,598	15.0%	15.7%
Eau Claire	2,034	6.6%	18.7%
Green Bay	1,003	3.3%	16.4%
La Crosse	1,754	5.7%	17.6%
Oshkosh	1,760	5.7%	13.8%
Parkside	951	3.1%	19.0%
Platteville	1,546	5.0%	21.5%
River Falls	1,287	4.2%	19.9%
Stevens Point	1,624	5.3%	17.8%
Stout	1,498	4.9%	17.7%
Superior	350	1.1%	12.7%
Whitewater	2,063	6.7%	19.2%
Colleges	4,190	13.7%	32.2%
Total	30,652	100.0%	17.7%

The number of new freshmen who attended the UW System in fall 2007 increased by 18.3 percent from ten years ago, and 11.6 percent from five years ago. UW System new freshmen enrollment in fall 2007 is at an all time high.

Table 5
UW System New Freshman Headcount by Institution
Fall 1997, Fall 2002, and Fall 2007

	1997			2002			2007		
	#	% of UWS NF Enroll	% of Inst. Enroll.	#	% of UWS NF Enroll	% of Inst. Enroll.	#	% of UWS NF Enroll	% of Inst. Enroll.
MSN	5,880	22.7%	14.7%	5,514	20.1%	13.4%	5,994	19.6%	14.4%
MIL	2,481	9.6%	11.1%	3,314	12.1%	13.2%	4,598	15.0%	15.7%
EAU	2,171	8.4%	20.4%	2,057	7.5%	18.7%	2,034	6.6%	18.7%
GBY	953	3.7%	16.8%	917	3.3%	16.3%	1,003	3.3%	16.4%
LAC	1,706	6.6%	18.6%	1,557	5.7%	16.1%	1,754	5.7%	17.6%
OSH	1,758	6.8%	15.5%	1,811	6.6%	14.5%	1,760	5.7%	13.8%
PKS	819	3.2%	17.4%	832	3.0%	16.7%	951	3.1%	19.0%
PLT	998	3.9%	19.1%	1,126	4.1%	18.5%	1,546	5.0%	21.5%
RVF	1,152	4.4%	21.2%	1,060	3.9%	18.7%	1,287	4.2%	19.9%
STP	1,551	6.0%	17.7%	1,476	5.4%	16.5%	1,624	5.3%	17.8%
STO	1,250	4.8%	16.5%	1,312	4.8%	15.9%	1,498	4.9%	17.7%
SUP	352	1.4%	13.5%	314	1.1%	10.8%	350	1.1%	12.7%
WTW	1,914	7.4%	17.7%	2,035	7.4%	18.8%	2,063	6.7%	19.2%
UWC	2,916	11.3%	32.8%	4,141	15.1%	33.1%	4,190	13.7%	32.2%
Total	25,901	100.0%	16.9%	27,466	100.0%	16.6%	30,652	100.0%	17.7%

DEMOGRAPHICS

Resident Status

In fall 2007, 80.7 percent (24,732) of new freshmen were Wisconsin residents, 9.4 percent (2,881) were enrolled under the Minnesota and Michigan reciprocity agreements, and 9.9 percent (3,039) were non-resident new freshmen (Table 6). Non-resident students include 272 new freshmen enrolled in UW-Platteville's Tri-State Initiative, 44 new freshmen enrolled in the Midwest Student Exchange Program, and 23 new freshmen enrolled in the Return to Wisconsin program. Combined, these programs accounted for 11.2 percent of non-resident new freshmen in fall 2007.

Table 6
UW System New Freshmen by Resident Status and Institution
Fall 2007

	WI Resident		Non-Resident		Reciprocity		Total
	#	%	#	%	#	%	#
MSN	3,500	58.4%	1,796	30.0%	698	11.6%	5,994
MIL	4,316	93.9%	185	4.0%	97	2.1%	4,598
EAU	1,530	75.2%	33	1.6%	471	23.2%	2,034
GBY	935	93.2%	39	3.9%	29	2.9%	1,003
LAC	1,421	81.0%	115	6.6%	218	12.4%	1,754
OSH	1,706	96.9%	41	2.3%	13	0.7%	1,760
PKS	884	93.0%	66	6.9%	1	0.1%	951
PLT	1,236	79.9%	289	18.7%	21	1.4%	1,546
RVF	635	49.3%	26	2.0%	626	48.6%	1,287
STP	1,494	92.0%	83	5.1%	47	2.9%	1,624
STO	955	63.8%	64	4.3%	479	32.0%	1,498
SUP	201	57.4%	24	6.9%	125	35.7%	350
WTW	1,833	88.9%	215	10.4%	15	0.7%	2,063
UWC	4,086	97.5%	63	1.5%	41	1.0%	4,190
Total	24,732	80.7%	3,039	9.9%	2,881	9.4%	30,652

Note: Reciprocity includes Minnesota and Michigan reciprocity students.

The proportion of new freshmen who enrolled under either the Minnesota or Michigan reciprocity agreements decreased 0.3 percentage points from last year (Table 7). The proportion of non-resident new freshmen (9.9%) increased 1.3 percentage points over fall 2006 and is the highest percentage of non-resident new freshmen in the past 10 years. The proportion of new freshmen who are Wisconsin residents ranged from 80.7 to 84.0 percent through the past ten years.

Table 7
UW System New Freshmen by Resident Status
Fall 1997 to Fall 2007

	WI Resident	Non-Resident	Reciprocity	Total
1997	82.1%	8.2%	9.8%	25,901
1998	82.3%	8.1%	9.5%	27,058
1999	83.2%	7.1%	9.7%	27,123
2000	82.3%	7.9%	9.8%	27,338
2001	82.6%	8.3%	9.1%	28,000
2002	83.2%	7.3%	9.4%	27,466
2003	84.0%	6.9%	9.1%	28,287
2004	83.4%	7.0%	9.7%	28,412
2005	81.6%	8.4%	10.0%	29,635
2006	81.7%	8.6%	9.7%	29,342
2007	80.7%	9.9%	9.4%	30,652

Gender

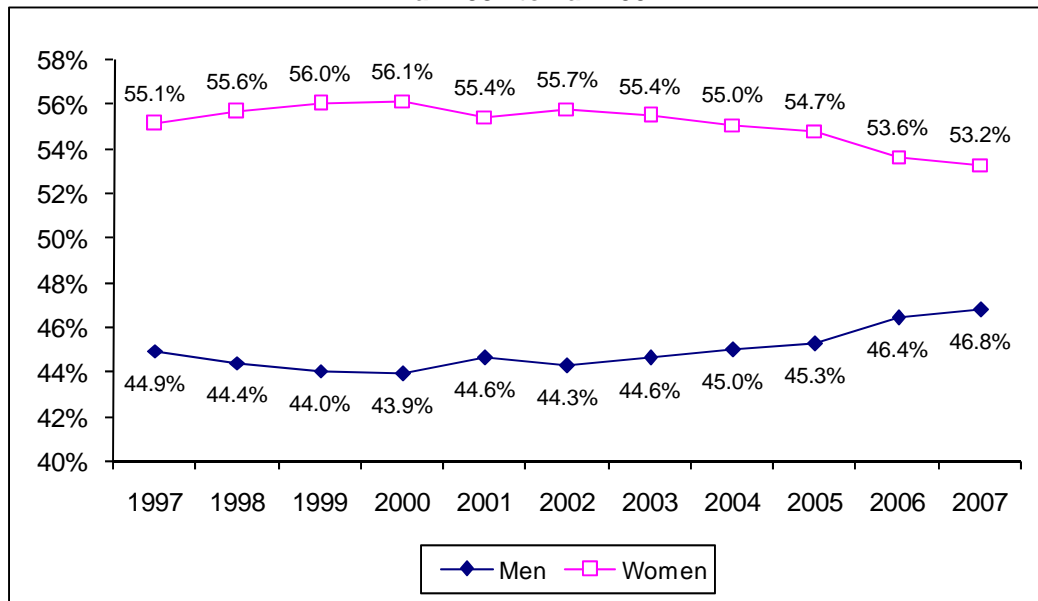
Female students comprised 53.2 percent of the new freshman class in fall 2007, while 46.8 percent were male students (Table 8). The percentage of female students ranged from 34.9 percent at UW-Platteville to 65.3 percent at UW-Green Bay.

**Table 8
UW System New Freshmen by Gender and Institution
Fall 2007**

	Female		Male		Total
	#	%	#	%	#
MSN	3,206	53.5%	2,788	46.5%	5,994
MIL	2,292	49.8%	2,306	50.2%	4,598
EAU	1,253	61.6%	781	38.4%	2,034
GBY	655	65.3%	348	34.7%	1,003
LAC	1,087	62.0%	667	38.0%	1,754
OSH	1,049	59.6%	711	40.4%	1,760
PKS	488	51.3%	463	48.7%	951
PLT	539	34.9%	1,007	65.1%	1,546
RVF	750	58.3%	537	41.7%	1,287
STP	893	55.0%	731	45.0%	1,624
STO	766	51.1%	732	48.9%	1,498
SUP	203	58.0%	147	42.0%	350
WTW	996	48.3%	1,067	51.7%	2,063
UWC	2,144	51.2%	2,046	48.8%	4,190
Total	16,321	53.2%	14,331	46.8%	30,652

Figure 1 shows the trend in new freshman enrollment by gender from fall 1997 to fall 2007. The gap between female and male students during the past ten years peaked in 2000 at 12.2 percentage points. The fall 2007 gender gap (6.4 percentage points) is the smallest gender gap over the past ten years. Female students have made up the majority of the UW System new freshman class since 1976.

**Figure 1
UW System New Freshmen by Gender
Fall 1997 to Fall 2007**



Race and Ethnicity

In fall 2007, students of color made up 10.7 percent of the new freshman class, while 87.6 percent of the incoming class listed a race of white or did not provide a race/ethnicity. International students comprised 1.8 percent of fall 2007 new freshmen (Table 9). The percentage of new freshmen who were students of color ranged from 4.6 percent at UW-Superior to 25.3 percent at UW-Parkside.

Table 9
UW System New Freshmen by Race/Ethnicity and Institution
Fall 2007

	African American		Hispanic/Latino		American Indian		Southeast Asian		Other Asian		All Students of Color		International		White/Unknown		Total #
	#	%	#	%	#	%	#	%	#	%	#	%	#	%	#	%	
MSN	182	3.0%	222	3.7%	55	0.9%	130	2.2%	245	5.0%	834	13.9%	304	5.1%	4,856	81.0%	5,994
MIL	293	6.4%	212	4.6%	38	0.8%	123	2.7%	107	2.8%	773	16.8%	46	1.0%	3,779	82.2%	4,598
EAU	14	0.7%	29	1.4%	15	0.7%	34	1.7%	26	1.4%	118	5.8%	9	0.4%	1,907	93.8%	2,034
GBY	12	1.2%	14	1.4%	10	1.0%	20	2.0%	9	1.0%	65	6.5%	10	1.0%	928	92.5%	1,003
LAC	19	1.1%	25	1.4%	12	0.7%	36	2.1%	32	2.0%	124	7.1%	49	2.8%	1,581	90.1%	1,754
OSH	32	1.8%	35	2.0%	22	1.3%	36	2.0%	15	0.9%	140	8.0%	10	0.6%	1,610	91.5%	1,760
PKS	148	15.6%	63	6.6%	7	0.7%	5	0.5%	18	2.6%	241	25.3%	12	1.3%	698	73.4%	951
PLT	31	2.0%	24	1.6%	12	0.8%	4	0.3%	15	1.0%	86	5.6%	3	0.2%	1,457	94.2%	1,546
RVF	24	1.9%	13	1.0%	11	0.9%	16	1.2%	14	1.2%	78	6.1%	7	0.5%	1,202	93.4%	1,287
STP	33	2.0%	36	2.2%	6	0.4%	23	1.4%	16	1.1%	114	7.0%	39	2.4%	1,471	90.6%	1,624
STO	11	0.7%	16	1.1%	12	0.8%	32	2.1%	14	1.0%	85	5.7%	10	0.7%	1,403	93.7%	1,498
SUP	6	1.7%	1	0.3%	7	2.0%	0	0.0%	2	0.6%	16	4.6%	18	5.1%	316	90.3%	350
WTW	126	6.1%	46	2.2%	14	0.7%	17	0.8%	19	1.0%	222	10.8%	17	0.8%	1,824	88.4%	2,063
UWC	74	1.8%	103	2.5%	35	0.8%	90	2.1%	73	1.9%	375	8.9%	5	0.1%	3,810	90.9%	4,190
Total	1,005	3.3%	839	2.7%	256	0.8%	566	1.8%	605	2.3%	3,271	10.7%	539	1.8%	26,842	87.6%	30,652

The UW System continues to increase the proportion of new freshmen who are students of color. The proportion of new freshmen in fall 2007 who were students of color is at an all time high (10.7%).

Table 10
UW System New Freshmen by Race/Ethnicity
Fall 1997 to Fall 2007

	African American		Hispanic/Latino		American Indian		Southeast Asian		Other Asian		All Students of Color		International		White/Unknown		Total #
	#	%	#	%	#	%	#	%	#	%	#	%	#	%	#	%	
1997	683	2.6%	468	1.8%	161	0.6%	187	0.7%	421	1.6%	1,920	7.4%	309	1.2%	23,672	91.4%	25,901
1998	701	2.6%	492	1.8%	160	0.6%	247	0.9%	453	1.7%	2,053	7.6%	298	1.1%	24,707	91.3%	27,058
1999	701	2.6%	525	1.9%	174	0.6%	304	1.1%	417	1.5%	2,121	7.8%	299	1.1%	24,703	91.1%	27,123
2000	716	2.6%	532	1.9%	176	0.6%	375	1.4%	414	1.5%	2,213	8.1%	315	1.2%	24,810	90.8%	27,338
2001	763	2.7%	598	2.1%	153	0.5%	397	1.4%	496	1.8%	2,407	8.6%	386	1.4%	25,207	90.0%	28,000
2002	735	2.7%	550	2.0%	151	0.5%	504	1.8%	459	1.7%	2,399	8.7%	273	1.0%	24,794	90.3%	27,466
2003	743	2.6%	603	2.1%	169	0.6%	448	1.6%	524	1.9%	2,487	8.8%	330	1.2%	25,470	90.0%	28,287
2004	874	3.1%	670	2.4%	183	0.6%	516	1.8%	562	2.0%	2,805	9.9%	263	0.9%	25,344	89.2%	28,412
2005	865	2.9%	688	2.3%	233	0.8%	522	1.8%	592	2.0%	2,900	9.8%	346	1.2%	26,389	89.0%	29,635
2006	903	3.1%	712	2.4%	207	0.7%	520	1.8%	639	2.2%	2,981	10.2%	385	1.3%	25,976	88.5%	29,342
2007	1,005	3.3%	839	2.7%	256	0.8%	566	1.8%	605	2.0%	3,271	10.7%	539	1.8%	26,842	87.6%	30,652

Age

UW System new freshmen age 19 and under made up the vast majority of new freshmen at 95.2 percent. The percentage of new freshmen age 20 and over was 4.8 percent for the UW System as a whole and ranged from 0.8 percent at UW-Madison to 16.2 percent at UW Colleges (Table 11).

**Table 11
UW System New Freshmen by Age Group and Institution
Fall 2007**

	19 and Under		20 to 24		25 to 34		35 and Over		Total
	#	%	#	%	#	%	#	%	#
MSN	5,945	99.2%	46	0.8%	3	0.0%	0	0.0%	5,994
MIL	4,423	96.2%	132	2.9%	35	0.8%	8	0.2%	4,598
EAU	2,002	98.4%	27	1.3%	5	0.2%	0	0.0%	2,034
GBY	973	97.0%	22	2.2%	4	0.4%	4	0.4%	1,003
LAC	1,728	98.5%	22	1.3%	3	0.2%	1	0.1%	1,754
OSH	1,690	96.0%	43	2.4%	17	1.0%	10	0.6%	1,760
PKS	859	90.3%	64	6.7%	21	2.2%	7	0.7%	951
PLT	1,443	93.3%	31	2.0%	36	2.3%	36	2.3%	1,546
RVF	1,241	96.4%	34	2.6%	9	0.7%	3	0.2%	1,287
STP	1,582	97.4%	30	1.8%	10	0.6%	2	0.1%	1,624
STO	1,453	97.0%	42	2.8%	3	0.2%	0	0.0%	1,498
SUP	319	91.1%	24	6.9%	3	0.9%	4	1.1%	350
WTW	2,025	98.2%	28	1.4%	7	0.3%	3	0.1%	2,063
UWC	3,513	83.8%	369	8.8%	217	5.2%	91	2.2%	4,190
Total	29,196	95.2%	914	3.0%	373	1.2%	169	0.6%	30,652

The proportion of UW System new freshmen age 19 and under ranged from 94.4 percent to 95.5 percent over the past 10 years. The proportion of new freshmen age 20 and over ranged from 4.5 to 5.6 percent in the last ten years (Table 12).

**Table 12
UW System New Freshmen by Age Group
Fall 1997 to Fall 2007**

	19 and Under		20 to 24		25 to 34		35 and Over		Total
	#	%	#	%	#	%	#	%	#
1997	24,479	94.5%	921	3.6%	341	1.3%	160	0.6%	25,901
1998	25,700	95.0%	931	3.4%	294	1.1%	133	0.5%	27,058
1999	25,854	95.3%	878	3.2%	264	1.0%	127	0.5%	27,123
2000	25,956	94.9%	954	3.5%	267	1.0%	161	0.6%	27,338
2001	26,442	94.4%	1,022	3.7%	358	1.3%	178	0.6%	28,000
2002	26,103	95.0%	900	3.3%	284	1.0%	179	0.7%	27,466
2003	27,014	95.5%	828	2.9%	282	1.0%	163	0.6%	28,287
2004	27,123	95.5%	869	3.1%	294	1.0%	126	0.4%	28,412
2005	28,316	95.5%	881	3.0%	282	1.0%	156	0.5%	29,635
2006	28,002	95.4%	886	3.0%	302	1.0%	152	0.5%	29,342
2007	29,196	95.2%	914	3.0%	373	1.2%	169	0.6%	30,652

Full-Time Status

The majority of UW new freshmen in fall 2007 (96.7%) were full-time students, with a credit load of 12 or more credits (Table 13). The percentage of part-time new freshmen ranged from 0.2 percent at UW-Madison and UW-La Crosse to 13.0 percent at UW Colleges.

**Table 13
UW System New Freshmen by Full-Time/Part-Time Status and Institution
Fall 2007**

	Full-Time		Part-Time		Total
	#	%	#	%	#
MSN	5,980	99.8%	14	0.2%	5,994
MIL	4,465	97.1%	133	2.9%	4,598
EAU	2,026	99.6%	8	0.4%	2,034
GBY	987	98.4%	16	1.6%	1,003
LAC	1,750	99.8%	4	0.2%	1,754
OSH	1,723	97.9%	37	2.1%	1,760
PKS	833	87.6%	118	12.4%	951
PLT	1,466	94.8%	80	5.2%	1,546
RVF	1,276	99.1%	11	0.9%	1,287
STP	1,611	99.2%	13	0.8%	1,624
STO	1,489	99.4%	9	0.6%	1,498
SUP	343	98.0%	7	2.0%	350
WTW	2,048	99.3%	15	0.7%	2,063
UWC	3,644	87.0%	546	13.0%	4,190
Total	29,641	96.7%	1,011	3.3%	30,652

The percentage of UW System full-time new freshmen remained steady between 96 and 97 percent over the past ten years while the percentage of part-time new freshmen ranged from 3 to 4 percent.

**Table 14
UW System New Freshmen by Full-Time/Part-Time Status
Fall 1997 to Fall 2007**

	Full-Time	Part-Time	Total
1997	96.3%	3.7%	25,901
1998	96.4%	3.6%	27,058
1999	96.3%	3.7%	27,123
2000	96.3%	3.7%	27,338
2001	96.3%	3.7%	28,000
2002	96.8%	3.2%	27,466
2003	96.4%	3.6%	28,287
2004	96.7%	3.3%	28,412
2005	96.9%	3.1%	29,635
2006	96.8%	3.2%	29,342
2007	96.7%	3.3%	30,652

EDUCATIONAL PREPARATION

ACT Scores

Table 15 shows the average ACT composite scores of fall 2007 new freshmen by institution. The average ACT composite score of new freshmen ranged from 27.9 at UW-Madison to 20.2 at UW-Parkside. In fall 2007, 2,491 (8.1%) UW System new freshmen did not provide an ACT score.

Table 15
UW System New Freshmen Average ACT Composite Score by Institution
Fall 2007

	Average
MSN	27.9
MIL	22.0
EAU	24.5
GBY	22.5
LAC	24.7
OSH	22.5
PKS	20.2
PLT	22.2
RVF	21.9
STP	22.8
STO	21.4
SUP	22.0
WTW	22.2
UWC	20.4
UW System	23.2

Note: Excludes students who did not provide an ACT score.

The UW System new freshman average ACT composite score of 23.2 is two test points higher than the national average of 21.2 (Table 16). Since 1997, the average ACT composite score of UW System new freshmen has ranged from 1.9 to 2.3 test points above the national average. In fall 2007, 64.3 percent of UW System new freshmen scored above the national average.

Table 16
UW System New Freshmen Average ACT Composite Score by Institution
and National Average ACT Composite Score
Fall 1997 to Fall 2007

	1997	1998	1999	2000	2001	2002	2003	2004	2005	2006	2007
MSN	26.3	26.8	26.7	26.8	26.9	27.2	27.5	27.5	27.5	27.5	27.9
MIL	21.8	21.8	21.8	21.8	21.9	21.9	22.1	22.1	21.9	22.0	22.0
EAU	23.1	23.4	23.6	23.6	23.6	23.6	24.5	24.4	24.4	24.3	24.5
GBY	22.6	22.5	22.8	22.5	22.7	22.6	22.7	22.6	22.8	22.6	22.5
LAC	23.5	23.6	23.8	24.0	24.2	24.3	24.8	24.9	24.7	24.6	24.7
OSH	21.8	22.0	22.0	22.1	21.8	21.6	22.2	22.4	22.4	22.2	22.5
PKS	20.2	20.2	20.2	20.0	19.9	20.3	19.9	20.1	20.0	19.8	20.2
PLT	22.8	22.8	22.6	22.6	22.5	22.3	22.5	22.4	22.4	22.1	22.2
RVF	22.7	22.6	22.6	22.5	22.3	22.3	22.1	21.8	22.2	21.8	21.9
STP	22.7	22.8	22.8	22.9	22.7	23.0	22.8	22.7	22.7	22.7	22.8
STO	21.3	21.5	21.4	21.5	21.6	21.4	21.5	21.4	21.3	21.2	21.4
SUP	21.2	21.1	20.9	21.3	22.0	22.0	22.0	22.3	22.2	22.0	22.0
WTW	22.0	22.0	21.8	21.9	21.9	22.0	21.9	22.1	22.1	22.2	22.2
UWC	20.6	20.6	20.4	20.2	20.3	20.3	20.3	20.3	20.3	20.4	20.4
UW System	23.0	23.0	22.9	23.0	23.0	23.0	23.1	23.2	23.2	23.1	23.2
National Average	21.0	21.0	21.0	21.0	21.0	20.8	20.8	20.9	20.9	21.1	21.2

High School Rank

In fall 2007, 44.5 percent of UW System new freshmen, who submitted high school rank, graduated from high school in the top 25 percent of their high school class (Table 17). Nearly four of every five (77.7%) new freshmen graduated in the top half of their high school class. See Appendix E for new freshmen average high school percentile rank by institution from fall 1976 to fall 2007.

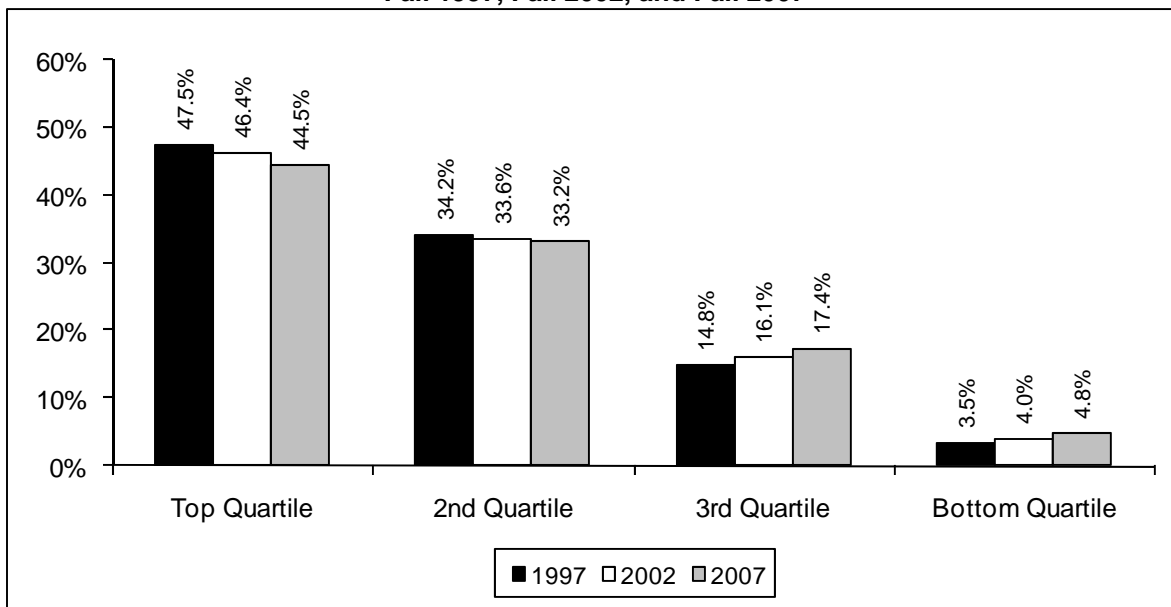
Table 17
UW System New Freshmen by High School Rank and Institution
Fall 2007

	Top Quartile		2nd Quartile		Top Half		3rd Quartile		Bottom Quartile	
	#	%	#	%	#	%	#	%	#	%
MSN	3,924	93.2%	241	5.7%	4,165	99.0%	37	0.9%	7	0.2%
MIL	987	24.6%	1,551	38.6%	2,538	63.2%	1,158	28.9%	317	7.9%
EAU	1,020	55.1%	785	42.4%	1,805	97.5%	45	2.4%	1	0.1%
LAC	1,265	82.8%	223	14.6%	1,488	97.4%	39	2.6%	0	0.0%
OSH	612	40.1%	743	48.7%	1,355	88.9%	170	11.1%	0	0.0%
PKS	232	27.2%	288	33.7%	520	60.9%	244	28.6%	90	10.5%
PLT	464	33.6%	575	41.6%	1,039	75.1%	299	21.6%	45	3.3%
RVF	391	32.2%	478	39.4%	869	71.6%	283	23.3%	62	5.1%
STP	654	45.3%	715	49.5%	1,369	94.8%	73	5.1%	2	0.1%
STO	336	25.5%	660	50.0%	996	75.5%	320	24.2%	4	0.3%
SUP	117	38.0%	132	42.9%	249	80.8%	49	15.9%	10	3.2%
WTW	600	31.9%	855	45.5%	1,455	77.4%	374	19.9%	51	2.7%
UWC	523	15.1%	1,048	30.3%	1,571	45.5%	1,267	36.7%	616	17.8%
Total	11,125	44.5%	8,294	33.2%	19,419	77.7%	4,358	17.4%	1,205	4.8%

Note: Excludes students who did not have a high school rank. High school rank information is not shown for UW-Green Bay since it does not collect high school rank from applicants.

The percentage of UW System new freshmen graduating in the top 25 percent of their high school class is slightly lower than ten and five years ago (Figure 2). For UW institutions that collect high school rank, the percentage of new freshmen who did not submit a high school rank increased from 8.6 percent in fall 1997 to 15.7 percent in fall 2007.

Figure 2
UW System New Freshmen by High School Rank
Fall 1997, Fall 2002, and Fall 2007



Appendix A
UW System New Freshmen Applications, Admissions, and Enrollment
by Resident Status and Institution, Fall 2007

		MSN	MIL	EAU	GBY	LAC	OSH	PKS	PLT	RVF	STP	STO	SUP	WTW	UWC
# Applications	WI Resident	9,074	11,212	5,113	3,185	5,567	5,486	2,220	2,761	1,514	4,599	2,473	571	5,361	6,885
	Non-Resident	12,690	1,052	154	161	389	169	254	678	89	309	109	91	763	220
	Reciprocity	3,096	296	2,179	96	1,184	69	19	77	1,572	215	1,363	354	68	30
	Total	24,860	12,560	7,446	3,442	7,140	5,724	2,493	3,516	3,175	5,123	3,945	1,016	6,192	7,135
# Completed Applications	WI Resident	8,299	10,003	4,826	2,580	5,255	4,797	1,866	2,501	1,375	4,242	2,277	505	4,709	5,948
	Non-Resident	11,172	872	119	104	363	147	173	581	69	282	95	58	660	156
	Reciprocity	2,818	261	2,079	77	1,139	62	15	74	1,442	195	1,278	334	59	21
	Total	22,289	11,136	7,024	2,761	6,757	5,006	2,054	3,156	2,886	4,719	3,650	897	5,428	6,125
# Admitted	WI Resident	5,417	9,640	3,640	2,293	3,482	3,866	1,730	2,356	1,273	3,384	2,009	437	4,042	5,901
	Non-Resident	6,959	847	87	89	307	111	158	548	63	252	87	53	568	154
	Reciprocity	1,628	251	1,410	73	624	49	14	72	1,294	143	1,100	280	54	21
	Total	14,004	10,738	5,137	2,455	4,413	4,026	1,902	2,976	2,630	3,779	3,196	770	4,664	6,076
% Enrolled	WI Resident	65%	45%	42%	41%	41%	44%	51%	52%	50%	44%	48%	46%	45%	69%
	Non-Resident	26%	22%	38%	44%	37%	37%	42%	53%	41%	33%	74%	45%	38%	61%
	Reciprocity	43%	39%	33%	40%	35%	27%	7%	29%	48%	33%	44%	45%	28%	48%
	Total	43%	43%	40%	41%	40%	44%	50%	52%	49%	43%	47%	45%	44%	69%

Note: Reciprocity includes Minnesota reciprocity students.
Applications and admissions include students who applied and/or were admitted to multiple UW institutions.

Appendix B
UW System New Freshmen Applications, Admissions, and Enrollment
by Gender and Institution, Fall 2007

		MSN	MIL	EAU	GBY	LAC	OSH	PKS	PLT	RVF	STP	STO	SUP	WTW	UWC
# Applications	Female	12,878	6,593	4,610	2,156	4,353	3,410	1,365	1,217	1,824	2,899	2,067	574	3,163	3,756
	Male	11,982	5,967	2,836	1,286	2,787	2,314	1,128	2,299	1,351	2,224	1,878	442	3,029	3,379
	Total	24,860	12,560	7,446	3,442	7,140	5,724	2,493	3,516	3,175	5,123	3,945	1,016	6,192	7,135
# Completed Applications	Female	11,604	5,782	4,365	1,724	4,136	2,998	1,124	1,077	1,662	2,674	1,901	508	2,775	3,182
	Male	10,685	5,354	2,659	1,037	2,621	2,008	930	2,079	1,224	2,045	1,749	389	2,653	2,943
	Total	22,289	11,136	7,024	2,761	6,757	5,006	2,054	3,156	2,886	4,719	3,650	897	5,428	6,125
# Admitted	Female	7,616	5,632	3,281	1,565	2,815	2,489	1,042	1,007	1,547	2,254	1,703	454	2,448	3,159
	Male	6,388	5,106	1,856	890	1,598	1,537	860	1,969	1,083	1,525	1,493	316	2,216	2,917
	Total	14,004	10,738	5,137	2,455	4,413	4,026	1,902	2,976	2,630	3,779	3,196	770	4,664	6,076
% Enrolled	Female	42%	41%	38%	42%	39%	42%	47%	54%	48%	40%	45%	45%	41%	68%
	Male	44%	45%	42%	39%	42%	46%	54%	51%	50%	48%	49%	47%	48%	70%
	Total	43%	43%	40%	41%	40%	44%	50%	52%	49%	43%	47%	45%	44%	69%

Note: Applications and admissions include students who applied and/or were admitted to multiple UW institutions.

Appendix C
UW System New Freshmen Applications, Admissions, and Enrollment
by Race/Ethnicity and Institution, Fall 2007

		MSN	MIL	EAU	GBY	LAC	OSH	PKS	PLT	RVF	STP	STO	SUP	WTW	UWC
# Applications	AA	855	1,310	92	110	85	230	587	185	99	212	77	24	536	253
	HL	776	585	110	63	112	146	175	65	56	122	60	9	191	199
	AI	132	112	58	47	45	53	22	21	22	35	38	24	50	61
	SA	336	325	132	88	92	139	22	18	68	102	98	4	69	171
	OA	1,702	312	116	41	106	68	59	44	35	75	58	8	91	143
	SOC	3,801	2,644	508	349	440	636	865	333	280	546	331	69	937	827
	White	19,005	9,738	6,901	3,063	6,601	5,063	1,580	3,158	2,862	4,474	3,586	894	5,214	6,299
	INTL	2,054	178	37	30	99	25	48	25	33	103	28	53	41	9
Total	24,860	12,560	7,446	3,442	7,140	5,724	2,493	3,516	3,175	5,123	3,945	1,016	6,192	7,135	
# Completed Applications	AA	518	946	71	52	55	154	411	109	70	137	53	19	366	162
	HL	619	499	99	44	96	119	141	55	52	105	51	7	149	162
	AI	94	89	48	29	34	44	15	17	18	27	30	15	46	52
	SA	253	290	117	58	73	113	19	16	57	87	88	4	62	132
	OA	1,566	288	107	34	95	57	55	36	29	70	53	7	84	116
	SOC	3,050	2,112	442	217	353	487	641	233	226	426	275	52	707	624
	White	17,567	8,909	6,559	2,526	6,305	4,500	1,390	2,913	2,640	4,190	3,354	812	4,689	5,495
	INTL	1,672	115	23	18	99	19	23	10	20	103	21	33	32	6
Total	22,289	11,136	7,024	2,761	6,757	5,006	2,054	3,156	2,886	4,719	3,650	897	5,428	6,125	
# Admitted	AA	367	799	46	27	45	78	323	71	60	95	35	15	249	156
	HL	556	472	87	37	86	90	126	49	45	86	37	6	121	160
	AI	85	86	36	24	31	35	13	15	18	17	25	12	38	52
	SA	212	276	102	40	66	88	18	12	54	68	74	3	56	131
	OA	970	276	84	29	92	47	53	36	24	59	42	5	69	113
	SOC	2,190	1,909	355	157	320	338	533	183	201	325	213	41	533	612
	White	10,925	8,716	4,760	2,280	3,994	3,672	1,349	2,784	2,412	3,351	2,962	696	4,100	5,458
	INTL	889	113	22	18	99	16	20	9	17	103	21	33	31	6
Total	14,004	10,738	5,137	2,455	4,413	4,026	1,902	2,976	2,630	3,779	3,196	770	4,664	6,076	
% Enrolled	AA	50%	37%	30%	44%	42%	41%	46%	44%	40%	35%	31%	40%	51%	47%
	HL	40%	45%	33%	38%	29%	39%	50%	49%	29%	42%	43%	17%	38%	64%
	AI	65%	44%	42%	42%	39%	63%	54%	80%	61%	35%	48%	58%	37%	67%
	SA	61%	45%	33%	50%	55%	41%	28%	33%	30%	34%	43%	0%	30%	69%
	OA	25%	39%	31%	31%	35%	32%	34%	42%	58%	27%	33%	40%	28%	65%
	SOC	38%	40%	33%	41%	39%	41%	45%	47%	39%	35%	40%	39%	42%	61%
	White	44%	43%	40%	41%	40%	44%	52%	52%	50%	44%	47%	45%	44%	70%
	INTL	34%	41%	41%	56%	49%	63%	60%	33%	41%	38%	48%	55%	55%	83%
Total	43%	43%	40%	41%	40%	44%	50%	52%	49%	43%	47%	45%	44%	69%	

Note: AA (African American), HL (Hispanic/Latino), AI (American Indian), SA (Southeast Asian), OA (Other Asian), SOC (Students of Color), INTL (International Students).

Applications and admissions include students who applied and/or were admitted to multiple UW institutions.

Appendix D
UW System New Freshman Headcount by Institution
Fall 1972 to Fall 2007

	MSN	MIL	EAU	GBY	LAC	OSH	PKS	PLT	RVF	STP	STO	SUP	WTW	UWC	Total
1972	4,219	3,042	2,308	668	1,605	2,226	1,183	1,020	804	1,876	994	591	1,660	2,438	24,634
1973	4,263	3,575	2,207	549	1,640	1,941	1,067	877	787	1,614	1,001	558	1,559	3,350	24,988
1974	4,394	3,358	2,419	646	1,862	1,730	1,052	897	973	1,644	1,227	511	1,443	2,994	25,150
1975	4,654	3,171	2,483	575	1,942	1,889	1,026	1,081	1,117	1,879	1,111	508	1,757	3,453	26,646
1976	3,918	2,994	2,245	560	1,884	1,709	784	1,150	1,264	1,913	1,279	485	1,915	3,158	25,258
1977	4,217	2,741	2,623	563	2,140	1,666	783	1,154	1,154	2,053	1,291	553	1,826	3,293	26,057
1978	4,683	3,165	2,555	597	2,057	1,752	909	1,040	1,199	1,960	1,414	465	1,773	2,991	26,560
1979	4,836	2,833	2,695	677	2,176	1,851	1,009	1,107	1,245	1,970	1,407	425	2,026	3,104	27,361
1980	5,021	2,845	2,737	789	2,053	1,807	1,056	1,227	1,317	2,021	1,507	446	2,165	3,461	28,452
1981	4,683	2,808	2,441	773	2,040	2,004	1,045	1,297	1,294	1,966	1,375	404	2,195	3,505	27,830
1982	4,797	2,684	2,494	714	1,928	1,797	954	1,246	1,116	1,712	1,380	382	2,082	3,606	26,892
1983	5,110	2,847	2,475	693	2,028	1,771	1,075	1,201	1,082	1,727	1,374	347	2,135	3,872	27,737
1984	5,490	2,866	2,355	708	2,072	1,869	871	1,062	1,103	1,798	1,388	321	2,189	3,660	27,752
1985	5,687	2,749	2,387	811	2,131	1,804	817	1,176	1,001	1,911	1,436	333	2,254	3,481	27,978
1986	5,383	2,679	2,472	696	2,114	1,947	886	1,127	1,145	1,838	1,419	368	2,136	3,738	27,948
1987	5,181	2,391	2,320	817	1,977	1,857	753	1,156	1,052	1,691	1,404	375	2,152	3,780	26,906
1988	5,934	2,649	2,278	862	1,890	1,837	942	1,059	1,048	1,705	1,361	412	1,898	4,241	28,116
1989	4,993	2,466	1,934	782	1,690	1,730	760	995	957	1,693	1,143	414	1,836	3,663	25,056
1990	4,699	2,450	1,736	746	1,622	1,608	785	943	940	1,581	1,130	346	1,953	3,570	24,109
1991	4,642	2,157	1,792	829	1,655	1,455	761	1,027	1,054	1,503	1,177	478	1,819	3,374	23,723
1992	4,416	1,882	1,869	816	1,495	1,492	769	910	1,026	1,398	1,000	363	1,785	3,454	22,675
1993	4,631	1,930	1,956	770	1,702	1,514	783	950	846	1,375	1,030	345	1,846	3,531	23,209
1994	4,681	1,806	2,088	883	1,504	1,393	770	958	1,004	1,384	1,075	285	1,704	3,125	22,660
1995	5,164	1,988	2,038	848	1,747	1,523	744	948	968	1,505	1,144	306	1,900	2,954	23,777
1996	5,455	2,253	2,048	1,027	1,735	1,559	686	965	1,161	1,586	1,287	324	1,842	2,839	24,767
1997	5,880	2,481	2,171	953	1,706	1,758	819	998	1,152	1,551	1,250	352	1,914	2,916	25,901
1998	5,596	2,700	2,156	1,035	1,744	1,923	883	1,122	1,207	1,517	1,345	396	1,931	3,503	27,058
1999	5,664	2,938	2,016	934	1,638	1,852	889	1,138	1,127	1,500	1,324	432	1,907	3,764	27,123
2000	5,736	2,979	2,094	996	1,614	1,652	823	1,003	1,126	1,530	1,322	422	2,077	3,964	27,338
2001	6,095	3,035	2,136	920	1,599	1,871	926	1,094	1,117	1,518	1,289	351	1,895	4,154	28,000
2002	5,514	3,314	2,057	917	1,557	1,811	832	1,126	1,060	1,476	1,312	314	2,035	4,141	27,466
2003	5,579	3,856	1,877	971	1,510	1,786	976	1,136	1,228	1,513	1,280	345	1,833	4,397	28,287
2004	5,641	3,823	2,034	998	1,546	1,729	985	1,202	1,212	1,536	1,292	347	1,762	4,305	28,412
2005	6,141	4,345	2,069	925	1,758	1,638	878	1,246	1,209	1,534	1,708	346	1,712	4,126	29,635
2006	5,643	4,090	2,026	1,028	1,752	1,765	907	1,439	1,296	1,650	1,516	312	1,805	4,113	29,342
2007	5,994	4,598	2,034	1,003	1,754	1,760	951	1,546	1,287	1,624	1,498	350	2,063	4,190	30,652

Appendix E
UW System New Freshmen by Average High School Percentile Rank and Institution
Fall 1976 to Fall 2007

	MSN	MIL	EAU	GBY	LAC	OSH	PKS	PLT	RVF	STP	STO	SUP	WTW	UWC	UW System
1976	81.2	66.9	70.9	67.8	65.8	58.8	63.3	66.8	60.4	61.1	61.8	65.3	63.3	60.9	66.8
1977	80.2	68.6	70.6	68.1	64.7	67.6	62.9	66.9	62.5	63.6	61.4	59.4	65.2	61.6	67.2
1978	79.5	65.8	70.4	65.1	66.9	58.2	62.4	67.2	62.6	64.5	60.4	62.2	63.6	61.8	67.1
1979	79.3	66.2	70.7	64.5	65.5	59.1	62.9	64.5	62.1	62.8	60.9	63.2	64.4	61.7	66.9
1980	79.8	64.8	69.9	64.8	65.7	60.2	60.9	64.9	62.2	62.2	60.4	59.0	64.6	58.9	66.3
1981	80.7	64.0	73.8	64.1	66.2	60.0	60.7	65.9	61.6	62.5	59.1	61.4	64.9	59.1	66.5
1982	80.0	67.1	72.0	62.8	64.4	60.3	62.0	63.3	63.4	61.2	57.0	64.1	63.5	58.7	66.3
1983	80.2	66.0	70.5	66.2	63.2	62.0	59.2	61.9	61.2	62.0	55.6	58.6	63.1	56.9	65.6
1984	78.9	66.9	68.6	65.7	63.0	62.6	59.6	63.3	60.0	61.7	53.2	59.1	60.7	57.3	65.3
1985	79.1	66.6	67.9	64.7	63.2	61.3	59.6	63.3	59.7	60.2	53.6	59.2	60.8	55.0	65.0
1986	78.5	66.5	69.2	63.4	61.6	62.0	60.2	63.2	58.6	61.6	54.9	58.7	62.8	53.8	64.7
1987	80.6	65.7	68.4	63.6	63.0	63.0	60.7	65.3	60.3	65.8	56.4	60.6	64.3	51.4	65.4
1988	79.9	64.2	72.6	67.5	67.0	66.2	57.8	64.5	64.1	67.1	58.0	62.8	68.0	51.2	66.5
1989	81.4	62.8	76.4	68.8	70.0	66.3	62.9	68.4	63.8	67.6	60.7	62.6	69.8	53.7	68.1
1990	81.7	62.6	76.1	68.7	70.0	68.6	60.5	67.4	64.9	65.6	57.8	60.2	68.6	51.2	67.4
1991	81.2	62.8	74.9	69.2	69.4	69.5	59.2	68.5	64.1	69.3	54.9	61.9	66.6	51.7	67.3
1992	82.2	62.7	75.1	71.5	70.7	71.6	58.4	71.0	66.7	70.4	63.7	65.9	65.1	51.1	68.3
1993	82.9	61.3	72.9	72.9	72.5	71.7	58.1	71.2	70.8	70.9	64.4	65.7	65.2	50.5	68.5
1994	84.6	60.7	72.8	70.9	74.9	71.3	59.0	70.3	69.1	72.7	61.2	63.9	64.9	50.3	69.1
1995	85.6	59.7	72.4	73.2	74.8	68.9	58.3	68.2	67.6	71.7	60.1	63.9	64.8	49.6	69.1
1996	84.6	58.3	71.2	70.1	75.3	66.9	59.6	69.0	70.7	69.1	60.7	64.0	65.7	51.0	68.9
1997	85.0	58.9	71.7	71.4	76.3	67.8	59.0	67.3	70.5	71.1	61.9	62.5	64.3	50.1	69.2
1998	86.2	58.5	73.1	71.4	77.6	68.2	56.8	67.6	70.6	73.0	63.4	60.9	64.5	50.1	69.0
1999	86.3	58.5	74.8	72.4	78.4	66.9	56.3	66.8	70.8	72.7	62.5	61.8	63.9	49.1	68.5
2000	86.8	58.9	74.2	72.2	79.0	66.6	56.0	64.9	69.8	73.5	64.0	63.2	63.4	47.8	68.3
2001	87.7	59.1	73.4	73.1	78.9	64.8	56.1	65.9	68.5	71.9	64.6	66.0	62.8	48.2	68.5
2002	88.6	59.9	74.8	72.8	80.0	65.2	54.2	64.4	68.3	73.2	64.8	63.0	64.2	49.3	68.5
2003	88.6	60.0	76.8	72.3	82.3	69.4	52.3	66.2	68.5	72.6	65.6	67.0	65.3	49.7	68.8
2004	88.7	59.1	76.2	--	83.3	70.1	55.5	64.1	64.5	73.0	61.6	66.2	65.6	49.8	68.5
2005	88.5	58.1	76.2	--	82.0	69.2	55.5	64.6	65.3	70.4	61.4	67.3	64.1	48.5	67.9
2006	89.1	58.5	75.4	--	82.3	69.2	56.7	64.2	63.9	71.2	62.4	65.3	63.9	49.2	67.7
2007	89.1	57.0	75.5	--	82.4	69.0	57.0	64.0	62.0	72.1	62.1	66.1	63.9	47.8	67.2

Note: Excludes students who did not have a high school rank. In fall 2004, UW-Green Bay discontinued collecting high school rank from applicants.