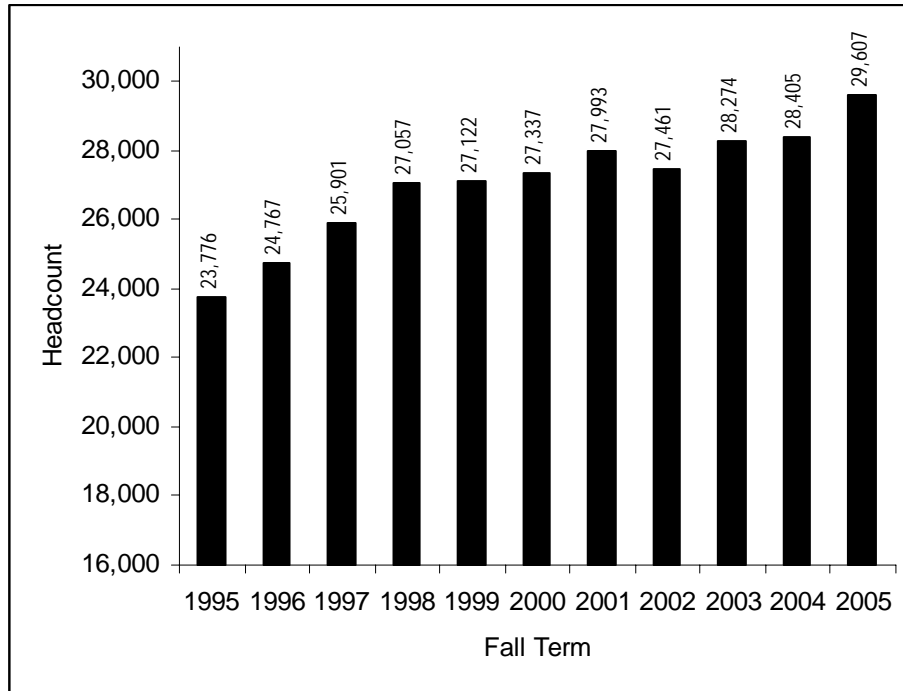




Informational Memorandum

The New Freshman Class: Fall 2005

**UW System New Freshman Headcount
Fall 1995 to Fall 2005**



Highlights

Percentage of fall 2005 UW System new freshmen who:

- are Wisconsin residents82%
- are women.....55%
- are students of color.....10%
- were 19 and under96%
- were conventional admits.....95%
- scored above the national ACT average score of 21.....65%
- were in the top quartile of their high school classes46%

The University of Wisconsin System
Office of Policy Analysis and Research
February 2006

<http://www.uwsa.edu/opar/>

1534 Van Hise Hall
1220 Linden Drive
Madison, WI 53706
(608) 262-6441

ENROLLMENT

Headcount

In fall 2005, 29,607 new freshmen enrolled in the UW System (Table 1). This is a 4.2 percent increase in enrollment from fall 2004. The proportion of institutional enrollment made up of new freshmen ranges from 12.2 percent at UW-Superior to 33.3 percent at UW Colleges. New freshmen constituted 18.2 percent of students enrolled in the UW System during fall 2005.

Table 1
UW System New Freshman Headcount by Institution
Fall 2005

	#	% UWS New Freshmen	% Institutional Enrollment
Madison	6,141	20.7%	15.1%
Milwaukee	4,340	14.7%	16.2%
Eau Claire	2,069	7.0%	19.6%
Green Bay	921	3.1%	17.2%
La Crosse	1,754	5.9%	19.9%
Oshkosh	1,638	5.5%	14.8%
Parkside	878	3.0%	17.8%
Platteville	1,246	4.2%	19.2%
River Falls	1,209	4.1%	20.2%
Stevens Point	1,534	5.2%	17.8%
Stout	1,708	5.8%	21.6%
Superior	345	1.2%	12.2%
Whitewater	1,712	5.8%	16.1%
Colleges	4,112	13.9%	33.3%
Total	29,607	100.0%	18.2%

The number of new freshmen who attended the UW System in fall 2005 indicates a 24.5 percent increase in the number of students who were new freshmen compared to 10 years ago, and a 8.3 percent increase in the number of new freshmen versus 5 years ago. In fall 2005, new freshmen comprised 18.2 percent of institutional enrollment representing a 2.3 percentage point increase compared to 10 years ago.

Table 2
UW System New Freshman Headcount by Institution
Fall 1995, Fall 2000, and Fall 2005

	1995			2000			2005		
	#	% of UWS NF Enroll.	% of Inst. Enroll.	#	% of UWS NF Enroll.	% of Inst. Enroll.	#	% of UWS NF Enroll.	% of Inst. Enroll.
MSN	5,164	21.7%	13.1%	5,736	21.0%	14.2%	6,141	20.7%	15.1%
MIL	1,988	8.4%	8.9%	2,979	10.9%	12.8%	4,340	14.7%	16.2%
EAU	2,038	8.6%	19.8%	2,094	7.7%	19.8%	2,069	7.0%	19.6%
GBY	848	3.6%	15.6%	996	3.6%	18.2%	921	3.1%	17.2%
LAC	1,747	7.3%	19.9%	1,614	5.9%	17.7%	1,754	5.9%	19.9%
OSH	1,523	6.4%	14.5%	1,652	6.0%	15.3%	1,638	5.5%	14.8%
PKS	744	3.1%	15.3%	823	3.0%	16.6%	878	3.0%	17.8%
PLT	948	4.0%	18.8%	1,003	3.7%	18.3%	1,246	4.2%	19.2%
RVF	968	4.1%	18.5%	1,126	4.1%	19.3%	1,209	4.1%	20.2%
STP	1,504	6.3%	17.9%	1,530	5.6%	17.8%	1,534	5.2%	17.8%
STO	1,144	4.8%	16.2%	1,322	4.8%	17.2%	1,708	5.8%	21.6%
SUP	306	1.3%	11.8%	421	1.5%	14.8%	345	1.2%	12.2%
WTW	1,900	8.0%	18.2%	2,077	7.6%	19.7%	1,712	5.8%	16.1%
UWC	2,954	12.4%	31.9%	3,964	14.5%	34.8%	4,112	13.9%	33.3%
Total	23,776	100.0%	15.9%	27,337	100.0%	17.4%	29,607	100.0%	18.2%

DEMOGRAPHICS

Resident Status

In fall 2005, 81.7 percent (24,175) of new freshmen were Wisconsin residents, 10.0 percent (2,951) were enrolled under the Minnesota and Michigan reciprocity agreements, and 8.4 percent (2,481) were other non-resident new freshmen (Table 3).

Table 3
UW System New Freshmen by Resident Status and Institution
Fall 2005

	WI Resident		Non-Resident		Compact*		Total
	#	%	#	%	#	%	#
MSN	3,624	59.0%	1,760	28.7%	757	12.3%	6,141
MIL	4,189	96.5%	72	1.7%	79	1.8%	4,340
EAU	1,570	75.9%	29	1.4%	470	22.7%	2,069
GBY	882	95.8%	21	2.3%	18	2.0%	921
LAC	1,467	83.6%	67	3.8%	220	12.5%	1,754
OSH	1,597	97.5%	27	1.6%	14	0.9%	1,638
PKS	821	93.5%	55	6.3%	2	0.2%	878
PLT	1,064	85.4%	158	12.7%	24	1.9%	1,246
RVF	639	52.9%	21	1.7%	549	45.4%	1,209
STP	1,406	91.7%	54	3.5%	74	4.8%	1,534
STO	1,102	64.5%	44	2.6%	562	32.9%	1,708
SUP	192	55.7%	25	7.2%	128	37.1%	345
WTW	1,600	93.5%	101	5.9%	11	0.6%	1,712
UWC	4,022	97.8%	47	1.1%	43	1.0%	4,112
Total	24,175	81.7%	2,481	8.4%	2,951	10.0%	29,607

* Compact includes Minnesota and Michigan reciprocity agreements.

The proportion of new freshmen who enrolled under either the Minnesota or Michigan reciprocity agreements increased slightly from last year (Table 4). The proportion of other non-resident new freshmen, at 8.4 percent, was a 1.4 percentage point increase over 2004 and the highest percentage of non-resident new freshmen in the past 10 years. The proportion of new freshmen who are Wisconsin residents ranged from 82 to 84 percent through the past ten years.

Table 4
UW System New Freshmen by Resident Status
Fall 1995 to Fall 2005

	WI Resident	Non-Resident	Compact*	Total
1995	82.7%	8.1%	9.1%	23,776
1996	82.2%	8.0%	9.6%	24,767
1997	82.0%	8.1%	9.7%	25,901
1998	82.3%	8.1%	9.5%	27,057
1999	83.2%	7.1%	9.7%	27,122
2000	82.3%	7.9%	9.8%	27,337
2001	82.6%	8.3%	9.1%	27,993
2002	83.2%	7.3%	9.4%	27,461
2003	84.0%	6.9%	9.1%	28,274
2004	83.4%	7.0%	9.7%	28,405
2005	81.7%	8.4%	10.0%	29,607

* Compact includes Minnesota and Michigan reciprocity agreements.

Gender

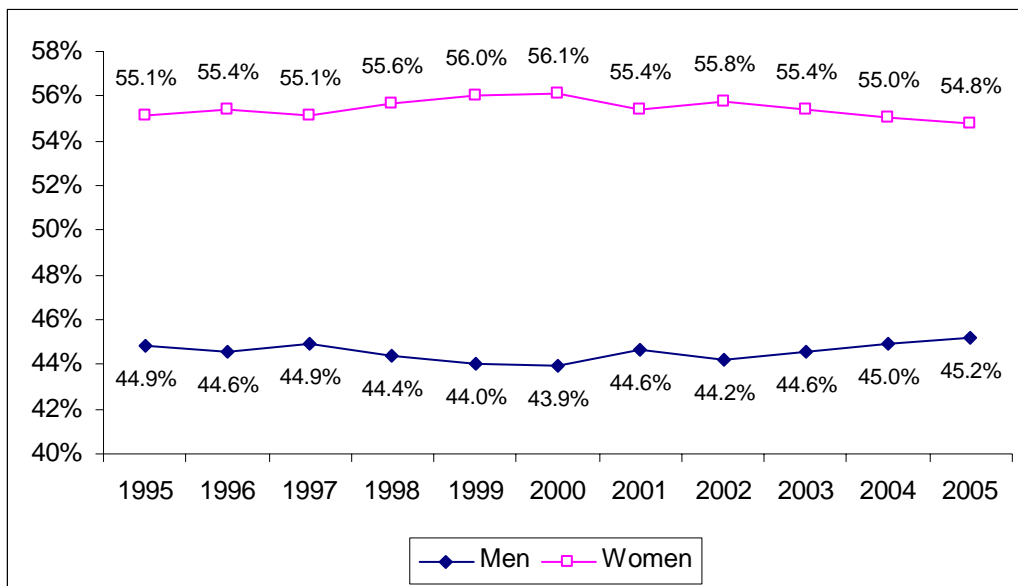
Female students comprised 54.8 percent of the new freshman class in fall 2005, while 45.2 percent were male students (Table 5). The percentage of female students by institution ranged from 35.3 percent at UW-Platteville to 65.1 percent at UW-Green Bay.

**Table 5
UW System New Freshmen by Gender and Institution
Fall 2005**

	Female		Male		Total
	#	%	#	%	#
MSN	3,446	56.1%	2,695	43.9%	6,141
MIL	2,291	52.8%	2,049	47.2%	4,340
EAU	1,265	61.1%	804	38.9%	2,069
GBY	600	65.1%	321	34.9%	921
LAC	1,057	60.3%	697	39.7%	1,754
OSH	998	60.9%	640	39.1%	1,638
PKS	500	56.9%	378	43.1%	878
PLT	440	35.3%	806	64.7%	1,246
RVF	743	61.5%	466	38.5%	1,209
STP	836	54.5%	698	45.5%	1,534
STO	865	50.6%	843	49.4%	1,708
SUP	213	61.7%	132	38.3%	345
WTW	830	48.5%	882	51.5%	1,712
UWC	2,128	51.8%	1,984	48.2%	4,112
Total	16,212	54.8%	13,395	45.2%	29,607

Figure 1 shows the trend in new freshman enrollment by gender from fall 1995 to fall 2005. The gap between female and male students during the past 10 years peaked in 2000 at 12.2 percentage points. The current gender gap (9.6 percentage points) has narrowed from 2004. Female students have made up the majority of the UW System new freshman class since 1976.

**Figure 1
UW System New Freshmen by Gender
Fall 1995 to Fall 2005**



Race and Ethnicity

In fall 2005, students of color made up 9.8 percent of the new freshman class, while 89.1 percent of the incoming class listed a race of white or unknown. International students comprised 1.1 percent of fall 2005 new freshmen (Table 6). The percentage of new freshmen who were students of color ranged from 3.7 percent at UW-Platteville to 24.1 percent at UW-Parkside.

Table 6
UW System New Freshmen by Race/Ethnicity and Institution
Fall 2005

	African American		Hispanic/Latino		American Indian		Asian American		All Students of Color		Inter-national		White/Unknown		Total #
	#	%	#	%	#	%	#	%	#	%	#	%	#	%	
MSN	176	2.9%	207	3.4%	35	0.6%	366	6.0%	784	12.8%	202	3.3%	5,155	83.9%	6,141
MIL	299	6.9%	166	3.8%	38	0.9%	225	5.2%	728	16.8%	14	0.3%	3,598	82.9%	4,340
EAU	10	0.5%	15	0.7%	11	0.5%	59	2.9%	95	4.6%	12	0.6%	1,962	94.8%	2,069
GBY	6	0.7%	12	1.3%	12	1.3%	22	2.4%	52	5.6%	9	1.0%	860	93.4%	921
LAC	18	1.0%	31	1.8%	13	0.7%	55	3.1%	117	6.7%	8	0.5%	1,629	92.9%	1,754
OSH	19	1.2%	25	1.5%	24	1.5%	61	3.7%	129	7.9%	3	0.2%	1,506	91.9%	1,638
PKS	134	15.3%	54	6.2%	6	0.7%	18	2.1%	212	24.1%	5	0.6%	661	75.3%	878
PLT	16	1.3%	10	0.8%	5	0.4%	15	1.2%	46	3.7%	2	0.2%	1,198	96.1%	1,246
RVF	14	1.2%	9	0.7%	7	0.6%	54	4.5%	84	6.9%	3	0.2%	1,122	92.8%	1,209
STP	12	0.8%	10	0.7%	11	0.7%	30	2.0%	63	4.1%	24	1.6%	1,447	94.3%	1,534
STO	24	1.4%	17	1.0%	15	0.9%	45	2.6%	101	5.9%	9	0.5%	1,598	93.6%	1,708
SUP	2	0.6%	1	0.3%	7	2.0%	8	2.3%	18	5.2%	21	6.1%	306	88.7%	345
WTW	87	5.1%	51	3.0%	10	0.6%	31	1.8%	179	10.5%	13	0.8%	1,520	88.8%	1,712
UWC	47	1.1%	80	1.9%	39	0.9%	124	3.0%	290	7.1%	5	0.1%	3,817	92.8%	4,112
Total	864	2.9%	688	2.3%	233	0.8%	1,113	3.8%	2,898	9.8%	330	1.1%	26,379	89.1%	29,607

The UW System continues to increase the proportion of new freshmen who are students of color. The proportion of new freshmen in fall 2005 who were students of color was the second highest in the last ten years.

Table 7
UW System New Freshmen by Race/Ethnicity
Fall 1995 to Fall 2005

	African American		Hispanic/Latino		American Indian		Asian American		All Students of Color		Inter-national		White/Unknown		Total #
	#	%	#	%	#	%	#	%	#	%	#	%	#	%	
1995	548	2.3%	389	1.6%	158	0.7%	564	2.4%	1,659	7.0%	274	1.2%	21,843	91.9%	23,776
1996	536	2.2%	371	1.5%	158	0.6%	596	2.4%	1,661	6.7%	275	1.1%	22,831	92.2%	24,767
1997	683	2.6%	468	1.8%	161	0.6%	608	2.3%	1,920	7.4%	309	1.2%	23,672	91.4%	25,901
1998	701	2.6%	492	1.8%	160	0.6%	700	2.6%	2,053	7.6%	298	1.1%	24,706	91.3%	27,057
1999	701	2.6%	525	1.9%	174	0.6%	721	2.7%	2,121	7.8%	299	1.1%	24,702	91.1%	27,122
2000	716	2.6%	532	1.9%	176	0.6%	789	2.9%	2,213	8.1%	315	1.2%	24,809	90.8%	27,337
2001	763	2.7%	598	2.1%	153	0.5%	893	3.2%	2,407	8.6%	380	1.4%	25,206	90.0%	27,993
2002	735	2.7%	550	2.0%	151	0.5%	962	3.5%	2,398	8.7%	272	1.0%	24,791	90.3%	27,461
2003	743	2.6%	603	2.1%	169	0.6%	972	3.4%	2,487	8.8%	329	1.2%	25,458	90.0%	28,274
2004	874	3.1%	669	2.4%	183	0.6%	1,078	3.8%	2,804	9.9%	262	0.9%	25,339	89.2%	28,405
2005	864	2.9%	688	2.3%	233	0.8%	1,113	3.8%	2,898	9.8%	330	1.1%	26,379	89.1%	29,607

Age

UW System new freshmen age 19 and under make up the vast majority of new freshmen at 95.6 percent. The percentage of new freshmen age 20 and over is 4.4 percent for the UW System as a whole and ranges from 0.9 percent at UW-La Crosse to 15.6 percent at UW Colleges (Table 8).

**Table 8
UW System New Freshmen by Age Group
Fall 2005**

	19 and Under		20 to 24		25 to 34		35 and Over		Total
	#	%	#	%	#	%	#	%	#
MSN	6,091	99.2%	49	0.8%	1	0.0%	0	0.0%	6,141
MIL	4,176	96.2%	126	2.9%	31	0.7%	7	0.2%	4,340
EAU	2,053	99.2%	9	0.4%	3	0.1%	4	0.2%	2,069
GBY	900	97.7%	18	2.0%	2	0.2%	1	0.1%	921
LAC	1,739	99.1%	10	0.6%	4	0.2%	1	0.1%	1,754
OSH	1,590	97.1%	26	1.6%	15	0.9%	7	0.4%	1,638
PKS	786	89.5%	56	6.4%	25	2.8%	11	1.3%	878
PLT	1,197	96.1%	22	1.8%	13	1.0%	14	1.1%	1,246
RVF	1,147	94.9%	43	3.6%	15	1.2%	4	0.3%	1,209
STP	1,492	97.3%	37	2.4%	5	0.3%	0	0.0%	1,534
STO	1,669	97.7%	36	2.1%	2	0.1%	1	0.1%	1,708
SUP	317	91.9%	25	7.2%	2	0.6%	1	0.3%	345
WTW	1,674	97.8%	27	1.6%	9	0.5%	2	0.1%	1,712
UWC	3,469	84.4%	391	9.5%	152	3.7%	100	2.4%	4,112
Total	28,300	95.6%	875	3.0%	279	0.9%	153	0.5%	29,607

The proportion of UW System new freshmen age 19 and under has remained relatively stable over the past six years. Between 1995 and 1999, UW System new freshmen age 19 and under increased by 2 percentage points. The current proportion of new freshmen in other age groups remained steady compared to fall 2004, and has declined since 1995 (Table 9).

**Table 9
UW System New Freshmen by Age Group
Fall 1995 to Fall 2005**

	19 and Under		20 to 24		25 to 34		35 and Over		Total
	#	%	#	%	#	%	#	%	#
1995	22,187	93.3%	983	4.1%	415	1.7%	191	0.8%	23,776
1996	23,312	94.1%	913	3.7%	351	1.4%	191	0.8%	24,767
1997	24,479	94.5%	921	3.6%	341	1.3%	160	0.6%	25,901
1998	25,700	95.0%	931	3.4%	293	1.1%	133	0.5%	27,057
1999	25,854	95.3%	878	3.2%	263	1.0%	127	0.5%	27,122
2000	25,955	94.9%	954	3.5%	267	1.0%	161	0.6%	27,337
2001	26,439	94.4%	1,019	3.6%	357	1.3%	178	0.6%	27,993
2002	26,098	95.0%	900	3.3%	284	1.0%	179	0.7%	27,461
2003	27,006	95.5%	827	2.9%	280	1.0%	161	0.6%	28,274
2004	27,121	95.5%	867	3.1%	293	1.0%	124	0.4%	28,405
2005	28,300	95.6%	875	3.0%	279	0.9%	153	0.5%	29,607

EDUCATIONAL PREPARATION

Admission Category

In fall 2005, 94.9 percent of all UW System new freshmen were conventional admissions (Table 10). Older new freshman, those 21 years of age and older, comprised 1.6 percent of UW System new freshmen. New freshmen admitted as exceptions made up 3.6 percent of UW System new freshmen.

Table 10
UW System New Freshmen by Admission Category and Institution
Fall 2005

	Conventional		Non-Conventional				Total
	Standard & Discretionary	%	Older	%	Exception	%	
MSN	5,953	96.9%	1	0.0%	187	3.0%	6,141
MIL	4,121	95.0%	25	0.6%	194	4.5%	4,340
EAU	2,039	98.6%	6	0.3%	24	1.2%	2,069
GBY	921	100.0%	0	0.0%	0	0.0%	921
LAC	1,728	98.5%	8	0.5%	18	1.0%	1,754
OSH	1,573	96.0%	29	1.8%	36	2.2%	1,638
PKS	780	88.8%	64	7.3%	34	3.9%	878
PLT	1,160	93.1%	4	0.3%	82	6.6%	1,246
RVF	1,177	97.4%	15	1.2%	17	1.4%	1,209
STP	1,471	95.9%	14	0.9%	49	3.2%	1,534
STO	1,651	96.7%	13	0.8%	44	2.6%	1,708
SUP	342	99.1%	1	0.3%	2	0.6%	345
WTW	1,636	95.6%	14	0.8%	62	3.6%	1,712
UWC	3,533	85.9%	272	6.6%	307	7.5%	4,112
Total	28,085	94.9%	466	1.6%	1,056	3.6%	29,607

The proportion of new freshmen admitted as conventional admits has ranged from 94.7 percent to 95.9 percent in the last decade (Table 11). During the same timeframe, the percentage of new freshmen admitted as older has declined from 3.2 percent in fall 1995 to a low of 1.2 percent in fall 2003 and fall 2004, then increased slightly to 1.6 percent in fall 2005. The percentage of new freshmen admitted as exceptions has ranged from a low of 2.1 percent (1995) to a high of 3.6 percent in fall 2005.

Table 11
UW System New Freshmen by Admission Category
Fall 1995 to Fall 2005

	Conventional		Non-Conventional			
	Standard & Discretionary	%	Older	%	Exception	%
1995	22,515	94.7%	759	3.2%	502	2.1%
1996	23,493	94.9%	634	2.6%	640	2.6%
1997	24,461	95.1%	580	2.3%	678	2.6%
1998	25,697	95.0%	590	2.2%	770	2.8%
1999	25,785	95.1%	529	2.0%	808	3.0%
2000	25,932	94.9%	566	2.1%	839	3.1%
2001	26,535	94.8%	678	2.4%	780	2.8%
2002	26,278	95.6%	484	1.8%	722	2.6%
2003	27,128	95.9%	326	1.2%	820	2.9%
2004	27,136	95.5%	348	1.2%	921	3.2%
2005	28,085	94.9%	466	1.6%	1,056	3.6%

ACT Scores

Table 12 shows the average ACT composite scores of fall 2005 new freshmen by institution. The average ACT composite score of new freshmen ranged from 27.5 at UW-Madison to 20.0 at UW-Parkside.

Table 12
UW System New Freshmen by ACT Composite Score and Institution
Fall 2005

	Average
MSN	27.5
MIL	21.9
EAU	24.4
GBY	22.8
LAC	24.7
OSH	22.4
PKS	20.0
PLT	22.4
RVF	22.2
STP	22.7
STO	21.3
SUP	22.1
WTW	22.1
UWC	20.3
UW System	23.2

The UW System new freshman average ACT composite score of 23.2 is over two test points higher than the national average of 20.9 (Table 13). Since 1995, the average ACT composite score of UW System new freshmen has ranged from 1.9 to 2.3 test points above the national average.

Table 13
UW System New Freshmen by ACT Composite Score
Fall 1995 to Fall 2005

	1995	1996	1997	1998	1999	2000	2001	2002	2003	2004	2005
UW System New Freshmen	22.8	22.8	23.0	23.0	22.9	23.0	23.0	23.0	23.1	23.2	23.2
National Average	20.8	20.9	21.0	21.0	21.0	21.0	21.0	20.8	20.8	20.9	20.9

High School Rank

In fall 2005, 45.6 percent of UW System new freshmen graduated from high school in the top 25 percent of their high school classes (Table 14). Nearly four of every five (78.7%) fall 2005 new freshmen graduated in the top half of their high school classes.

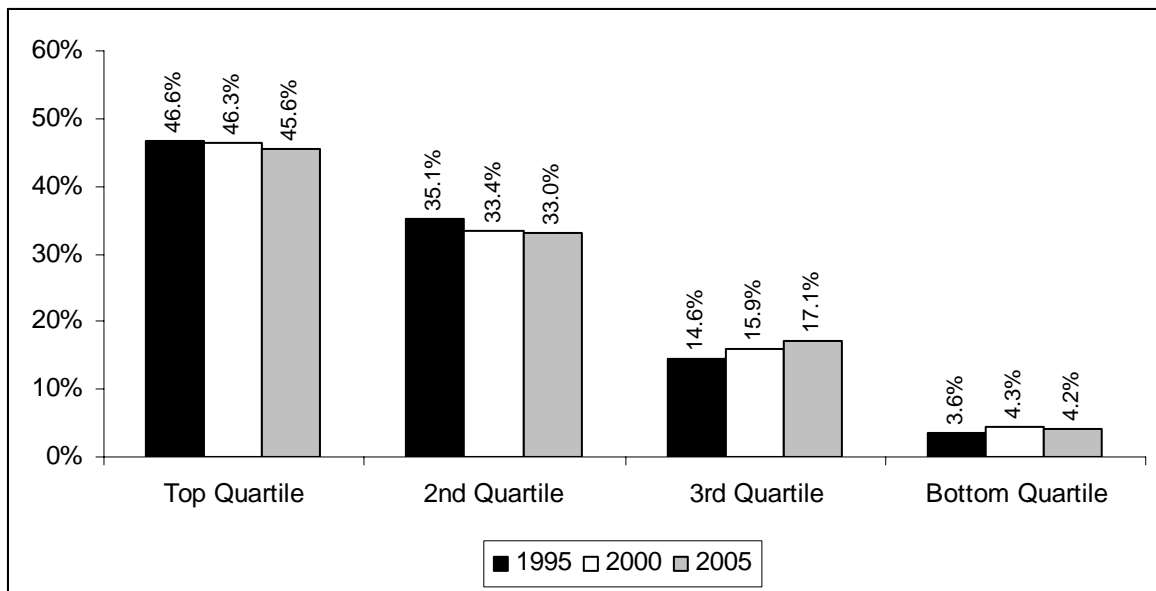
Table 14
UW System New Freshmen by High School Rank and Institution
Fall 2005

	Top Quartile		2nd Quartile		Top Half		3rd Quartile		Bottom Quartile	
	#	%	#	%	#	%	#	%	#	%
MSN	4,232	92.0%	324	7.0%	4,556	99.0%	42	0.9%	4	0.1%
MIL	1,000	25.5%	1,607	40.9%	2,607	66.4%	1,052	26.8%	270	6.9%
EAU	1,139	58.1%	723	36.9%	1,862	95.0%	98	5.0%	0	0.0%
LAC	1,286	80.1%	273	17.0%	1,559	97.1%	46	2.9%	0	0.0%
OSH	565	38.1%	755	50.9%	1,320	88.9%	163	11.0%	1	0.1%
PKS	191	24.4%	263	33.5%	454	57.9%	256	32.7%	74	9.4%
PLT	412	34.8%	488	41.2%	900	76.0%	253	21.4%	31	2.6%
RVF	417	36.6%	468	41.1%	885	77.7%	218	19.1%	36	3.2%
STP	592	41.7%	684	48.2%	1,276	89.9%	144	10.1%	0	0.0%
STO	437	27.8%	715	45.5%	1,152	73.3%	373	23.7%	46	2.9%
SUP	133	43.6%	115	37.7%	248	81.3%	49	16.1%	8	2.6%
WTW	478	30.5%	753	48.0%	1,231	78.5%	303	19.3%	34	2.2%
UWC	538	15.5%	1,088	31.4%	1,626	46.9%	1,288	37.2%	552	15.9%
Total	11,420	45.6%	8,256	33.0%	19,676	78.7%	4,285	17.1%	1,056	4.2%

Note: Excludes students who did not have a high school rank. High school rank information is not shown for UW-Green Bay because, as of fall 2004, UW-Green Bay did not require applicants to submit high school rank.

The percentage of UW System new freshmen graduating in the top 25% of their high school classes is slightly lower than five and ten years ago (Figure 2).

Figure 2
UW System New Freshmen by High School Rank
Fall 1995, Fall 2000, and Fall 2005



Appendix A
UW System New Freshman Headcount by Institution
Fall 1972 to Fall 2005

	MSN	MIL	EAU	GBY	LAC	OSH	PKS	PLT	RVF	STP	STO	SUP	WTW	UWC	Total
1972	4,219	3,042	2,308	668	1,605	2,226	1,183	1,020	804	1,876	994	591	1,660	2,438	24,634
1973	4,263	3,575	2,207	549	1,640	1,941	1,065	877	787	1,614	1,001	558	1,559	2,932	24,568
1974	4,394	3,358	2,419	646	1,862	1,730	1,052	897	973	1,647	1,227	511	1,443	2,930	25,089
1975	4,654	3,171	2,483	575	1,942	1,889	1,026	1,081	1,117	1,879	1,111	508	1,757	3,453	26,646
1976	3,918	2,994	2,245	560	1,884	1,709	784	1,150	1,264	1,913	1,279	485	1,915	3,158	25,258
1977	4,217	2,741	2,623	563	2,140	1,666	783	1,154	1,154	2,053	1,291	553	1,826	3,293	26,057
1978	4,683	3,165	2,555	597	2,057	1,752	909	1,040	1,199	1,960	1,414	465	1,773	2,991	26,560
1979	4,836	2,833	2,695	677	2,176	1,851	1,009	1,107	1,245	1,970	1,407	425	2,026	3,104	27,361
1980	5,021	2,845	2,737	789	2,053	1,807	1,056	1,227	1,317	2,021	1,507	446	2,165	3,461	28,452
1981	4,683	2,808	2,441	773	2,040	2,004	1,045	1,297	1,294	1,966	1,375	404	2,195	3,505	27,830
1982	4,797	2,684	2,494	714	1,928	1,797	954	1,246	1,116	1,712	1,380	382	2,082	3,606	26,892
1983	5,110	2,847	2,475	693	2,028	1,771	1,075	1,201	1,082	1,727	1,374	347	2,135	3,872	27,737
1984	5,490	2,864	2,355	708	2,072	1,869	871	1,062	1,103	1,794	1,388	321	2,189	3,658	27,744
1985	5,687	2,747	2,387	811	2,131	1,804	817	1,176	1,001	1,887	1,436	333	2,253	3,481	27,951
1986	5,383	2,677	2,470	696	2,114	1,947	886	1,127	1,145	1,821	1,419	368	2,136	3,736	27,925
EM I															
1987	5,181	2,390	2,320	817	1,977	1,857	753	1,156	1,053	1,687	1,404	375	2,152	3,775	26,897
1988	5,934	2,647	2,277	862	1,890	1,837	942	1,059	1,048	1,700	1,361	411	1,898	4,238	28,104
1989	4,993	2,461	1,934	782	1,689	1,730	757	995	957	1,690	1,143	414	1,836	3,663	25,044
1990	4,699	2,446	1,736	746	1,622	1,608	782	943	939	1,580	1,130	346	1,953	3,565	24,095
EM II															
1991	4,642	2,153	1,796	829	1,655	1,455	760	1,027	1,054	1,505	1,177	478	1,819	3,372	23,722
1992	4,416	1,880	1,869	816	1,495	1,492	769	910	1,026	1,398	1,000	363	1,785	3,454	22,673
1993	4,631	1,930	1,956	770	1,702	1,514	783	950	846	1,375	1,030	344	1,845	3,531	23,207
1994	4,681	1,806	2,088	883	1,504	1,393	770	958	1,004	1,378	1,075	285	1,704	3,121	22,650
EM III															
1995	5,164	1,988	2,038	848	1,747	1,523	744	948	968	1,504	1,144	306	1,900	2,954	23,776
1996	5,455	2,253	2,048	1,027	1,735	1,559	686	965	1,161	1,586	1,287	324	1,842	2,839	24,767
1997	5,880	2,481	2,171	953	1,706	1,758	819	998	1,152	1,551	1,250	352	1,914	2,916	25,901
1998	5,596	2,699	2,156	1,035	1,744	1,923	883	1,122	1,207	1,517	1,345	396	1,931	3,503	27,057
1999	5,664	2,937	2,016	934	1,638	1,852	889	1,138	1,127	1,500	1,324	432	1,907	3,764	27,122
2000	5,736	2,979	2,094	996	1,614	1,652	823	1,003	1,126	1,530	1,322	421	2,077	3,964	27,337
EM21															
2001	6,095	3,034	2,136	920	1,593	1,871	926	1,094	1,117	1,518	1,289	351	1,895	4,154	27,993
2002	5,514	3,313	2,057	916	1,555	1,811	832	1,126	1,060	1,476	1,312	314	2,035	4,140	27,461
2003	5,579	3,854	1,877	971	1,509	1,786	976	1,136	1,227	1,513	1,280	345	1,833	4,388	28,274
2004	5,641	3,821	2,034	998	1,545	1,729	985	1,202	1,212	1,535	1,291	347	1,762	4,303	28,405
2005	6,141	4,340	2,069	921	1,754	1,638	878	1,246	1,209	1,534	1,708	345	1,712	4,112	29,607

Note: EMI, EMII, and EMIII denote the years covered by the first, second, and third phases of enrollment management planning. The current initiative in enrollment management is EM21.

Appendix B
UW System New Freshmen by Average High School Percentile Rank and Institution
Fall 1976 to Fall 2005

	MSN	MIL	EAU	GBY	LAC	OSH	PKS	PLT	RVF	STP	STO	SUP	WTW	UWC	Overall
1976	81.2	66.9	70.9	67.8	65.8	58.8	63.3	66.8	60.4	61.1	61.8	65.3	63.3	60.9	66.8
1977	80.2	68.6	70.6	68.1	64.7	67.6	62.9	66.9	62.5	63.6	61.4	59.4	65.2	61.6	67.2
1978	79.5	65.8	70.4	65.1	66.9	58.2	62.4	67.2	62.6	64.5	60.4	62.2	63.6	61.8	67.1
1979	79.3	66.2	70.7	64.5	65.5	59.1	62.9	64.5	62.1	62.8	60.9	63.2	64.4	61.7	66.9
1980	79.8	64.8	69.9	64.8	65.7	60.2	60.9	64.9	62.2	62.2	60.4	59.0	64.6	58.9	66.3
1981	80.7	64.0	73.8	64.1	66.2	60.0	60.7	65.9	61.6	62.5	59.1	61.4	64.9	59.1	66.5
1982	80.0	67.1	72.0	62.8	64.4	60.3	62.0	63.3	63.4	61.2	57.0	64.1	63.5	58.7	66.3
1983	80.2	66.0	70.5	66.2	63.2	62.0	59.2	61.9	61.2	62.0	55.6	58.6	63.1	56.9	65.6
1984	78.9	67.0	68.6	65.7	63.0	62.6	59.6	63.3	60.0	61.7	53.2	59.1	60.7	57.3	65.3
1985	79.1	66.6	67.9	64.8	63.2	61.3	59.6	63.3	59.7	60.2	53.6	59.2	60.8	55.0	65.0
1986	78.6	66.5	69.2	63.4	61.6	62.0	60.2	63.2	58.6	61.6	54.9	58.7	62.8	53.8	64.7
EM I															
1987	80.6	65.7	68.4	63.6	63.0	63.0	60.7	65.3	60.3	65.8	56.4	60.6	64.3	51.4	65.4
1988	79.9	64.2	72.6	67.5	67.0	66.2	57.8	64.5	64.1	67.1	58.0	62.8	68.0	51.2	66.5
1989	81.4	62.9	67.4	68.8	70.0	66.4	62.9	68.4	63.9	67.6	60.7	62.6	69.8	53.7	68.2
1990	81.7	62.6	67.1	68.7	70.0	68.6	60.5	67.4	64.9	65.7	57.8	60.2	68.6	51.2	67.4
EM II															
1991	81.2	62.8	74.8	69.2	69.4	69.5	59.2	68.5	64.1	69.3	54.9	61.9	66.6	51.7	67.3
1992	82.2	62.7	75.1	71.5	70.7	71.6	58.5	71.0	66.7	70.4	63.7	65.9	65.1	51.1	68.4
1993	82.9	61.3	72.9	72.9	72.5	71.7	58.1	71.2	70.8	70.9	64.4	65.7	65.2	50.5	68.5
1994	84.6	60.7	72.8	70.9	74.9	71.3	59.0	70.3	69.1	72.7	61.2	63.9	64.9	50.3	69.1
EM III															
1995	85.6	59.7	72.4	73.2	74.8	68.9	58.3	68.2	67.6	71.7	60.1	63.9	64.7	49.6	69.1
1996	84.6	58.3	71.2	70.1	75.3	66.9	59.6	68.9	70.7	69.1	60.6	64.0	65.7	50.9	68.9
1997	85.0	58.9	71.7	71.4	76.3	67.8	59.0	67.3	70.5	71.1	61.9	62.5	64.3	50.1	69.1
1998	86.2	58.5	73.1	71.4	77.6	68.2	56.8	67.6	70.6	73.0	63.4	60.9	64.5	50.1	69.0
1999	86.3	58.5	74.8	72.4	78.4	66.9	56.3	66.8	70.8	72.7	62.5	61.8	63.9	49.1	68.5
2000	86.8	58.5	74.2	72.2	79.0	66.6	56.0	64.9	69.8	73.5	64.0	63.1	63.4	47.8	68.3
EM21															
2001	87.7	59.1	73.4	73.1	78.9	64.8	56.1	65.9	68.5	71.9	64.6	66.0	62.8	48.2	68.5
2002	88.6	59.9	74.8	72.8	80.0	65.2	54.2	64.4	68.3	73.2	64.8	63.0	64.2	49.3	68.5
2003	88.6	60.0	76.8	72.3	82.3	69.4	52.3	66.2	68.5	72.6	65.6	67.0	65.3	49.7	68.9
2004	88.7	59.1	76.2	--	83.3	70.1	55.5	64.1	64.5	73.0	61.6	66.2	65.6	49.8	68.5
2005	88.5	58.1	76.2	--	82.0	69.3	55.5	64.6	65.3	70.4	61.4	67.4	64.1	48.5	67.9

Notes:

- 1) EMI, EMII, and EMIII denote the years covered by the first, second, and third phases of Enrollment Management planning. The current initiative in enrollment management is EM21.
- 2) Excludes students who did not have a high school rank. High school rank information is not shown for UW-Green Bay because, as of fall 2004, UW-Green Bay did not require applicants to submit high school rank.