

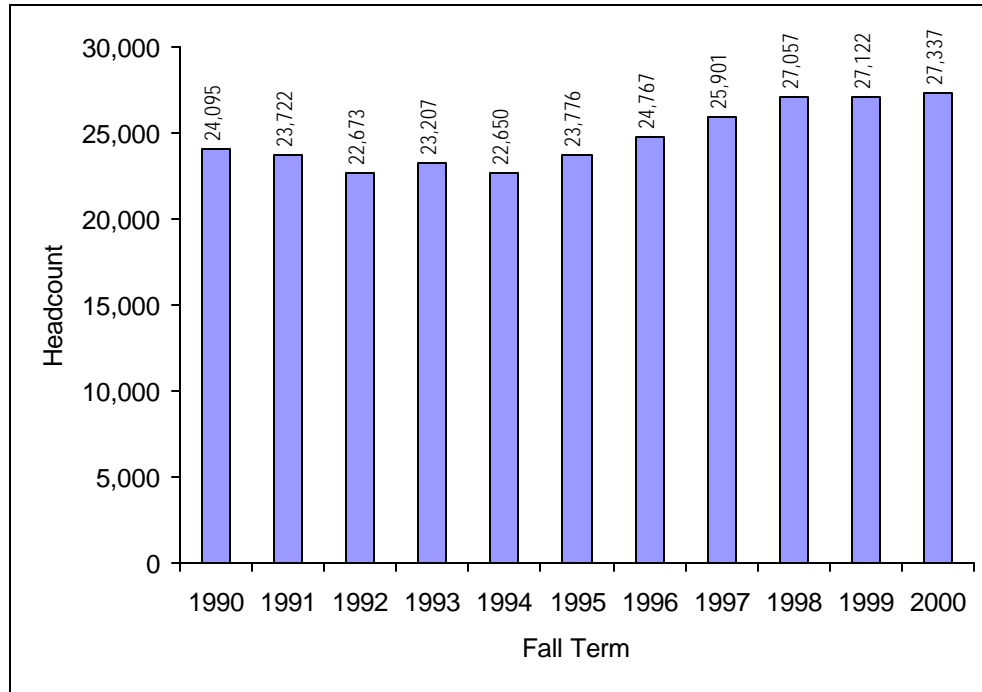


The University of Wisconsin System

# Informational Memorandum

## The New Freshman Class: Fall 2000

**UW System New Freshman Headcount  
Fall 1990 to Fall 2000**



### Highlights

Percentage of Fall 2000 UW System new freshmen who:

- are Wisconsin residents ..... 82%
- are women ..... 56%
- are students of color ..... 8%
- were conventional admits ..... 95%
- scored above the national ACT average score of 21 ..... 62%
- were in the top quartile of their high school classes ..... 46%

The University of Wisconsin System  
Office of Policy Analysis and Research  
May, 2001

<http://www.uwsa.edu/opar/>

1534 Van Hise Hall  
1220 Linden Drive  
Madison, WI 53706  
(608) 262-6441

**ENROLLMENT  
HEADCOUNT**

In Fall 2000, 27,337 new freshmen enrolled in the UW System (Table 1). This is the largest new freshman class since 1988 (see Appendix A) when new freshman enrollments peaked at 28,104. The proportion of total institutional enrollment made up of new freshmen ranges from 12.8% at UW-Milwaukee to 34.8% at UW Colleges.

**Table 1  
UW System New Freshman Headcount by Institution  
Fall 2000**

	#	% of UWS New Freshmen	% of Institutional Enrollment
Madison	5,736	21.0%	14.2%
Milwaukee	2,979	10.9%	12.8%
Eau Claire	2,094	7.7%	19.8%
Green Bay	996	3.6%	18.2%
La Crosse	1,614	5.9%	17.7%
Oshkosh	1,652	6.0%	15.3%
Parkside	823	3.0%	16.6%
Platteville	1,003	3.7%	18.3%
River Falls	1,126	4.1%	19.3%
Stevens Point	1,530	5.6%	17.8%
Stout	1,322	4.8%	17.2%
Superior	421	1.5%	14.8%
Whitewater	2,077	7.6%	19.7%
Colleges	3,964	14.5%	34.8%
<b>Total</b>	<b>27,337</b>	<b>100.0%</b>	<b>17.4%</b>

At 17.4% of UW System enrollment, new freshmen make up a higher percentage of enrollment than they did both five and ten years ago (Table 2).

**Table 2  
Uw System New Freshman Headcount by Institution  
Fall 1990, Fall 1995, and Fall 2000**

	1990			1995			2000		
	#	% of UWS NF Enroll	% of Inst. Enroll.	#	% of UWS NF Enroll	% of Inst. Enroll.	#	% of UWS NF Enroll	% of Inst. Enroll.
MSN	4,699	19.5%	10.9%	5,164	21.7%	13.1%	5,736	21.0%	14.2%
MIL	2,446	10.2%	9.6%	1,988	8.4%	8.9%	2,979	10.9%	12.8%
EAU	1,736	7.2%	16.3%	2,038	8.6%	19.8%	2,094	7.7%	19.8%
GBY	746	3.1%	15.5%	848	3.6%	15.6%	996	3.6%	18.2%
LAC	1,622	6.7%	18.5%	1,747	7.3%	19.9%	1,614	5.9%	17.7%
OSH	1,608	6.7%	14.5%	1,523	6.4%	14.5%	1,652	6.0%	15.3%
PKS	782	3.2%	15.3%	744	3.1%	15.3%	823	3.0%	16.6%
PLT	943	3.9%	18.0%	948	4.0%	18.8%	1,003	3.7%	18.3%
RVF	939	3.9%	18.1%	968	4.1%	18.5%	1,126	4.1%	19.3%
STP	1,580	6.6%	17.9%	1,504	6.3%	17.9%	1,530	5.6%	17.8%
STO	1,130	4.7%	15.2%	1,144	4.8%	16.2%	1,322	4.8%	17.2%
SUP	346	1.4%	13.2%	306	1.3%	11.8%	421	1.5%	14.8%
WTW	1,953	8.1%	19.2%	1,900	8.0%	18.2%	2,077	7.6%	19.7%
UWC	3,565	14.8%	30.6%	2,954	12.4%	31.9%	3,964	14.5%	34.8%
<b>Total</b>	<b>24,095</b>	<b>100.0%</b>	<b>15.1%</b>	<b>23,776</b>	<b>100.0%</b>	<b>15.9%</b>	<b>27,337</b>	<b>100.0%</b>	<b>17.4%</b>

## DEMOGRAPHICS

### RESIDENT STATUS

In Fall 2000, 82.3% of new freshmen were Wisconsin residents, 9.8% were enrolled under the Minnesota/Michigan reciprocity agreements, and 7.9% were other non-resident new freshmen (Table 3).

**Table 3**  
**Uw System New Freshmen by Resident Status and Institution**  
**Fall 2000**

	WI Resident		Non-Resident		Reciprocity*		Total
	#	%	#	%	#	%	#
MSN	3,696	64.4%	1,415	24.7%	625	10.9%	5,736
MIL	2,881	96.7%	56	1.9%	42	1.4%	2,979
EAU	1,532	73.2%	33	1.6%	529	25.3%	2,094
GBY	924	92.8%	45	4.5%	27	2.7%	996
LAC	1,315	81.5%	46	2.9%	253	15.7%	1,614
OSH	1,600	96.9%	34	2.1%	18	1.1%	1,652
PKS	725	88.1%	95	11.5%	3	0.4%	823
PLT	910	90.7%	65	6.5%	28	2.8%	1,003
RVF	598	53.1%	41	3.6%	487	43.3%	1,126
STP	1,405	91.8%	60	3.9%	65	4.2%	1,530
STO	903	68.3%	31	2.3%	388	29.3%	1,322
SUP	240	57.0%	28	6.7%	153	36.3%	421
WTW	1,930	92.9%	139	6.7%	8	0.4%	2,077
UWC	3,829	96.6%	81	2.0%	54	1.4%	3,964
<b>Total</b>	<b>22,488</b>	<b>82.3%</b>	<b>2,169</b>	<b>7.9%</b>	<b>2,680</b>	<b>9.8%</b>	<b>27,337</b>

\* Includes Minnesota and Michigan compact agreements.

The proportion of new freshmen who enrolled under either the Minnesota or Michigan reciprocity agreements has been relatively consistent over the past five years (Table 4). The proportion of other non-resident new freshmen, at 7.9%, is slightly up from Fall 1999. The proportion of Wisconsin resident new freshmen has ranged from 82.0% to 84.5% in the past ten years.

**Table 4**  
**UW System New Freshmen by Resident Status**  
**Fall 1990 to Fall 2000**

	WI Resident	Non-Resident	Reciprocity*	Total
1990	84.5%	7.5%	8.1%	24,095
1991	83.6%	7.4%	9.0%	23,722
1992	84.0%	7.7%	8.3%	22,673
1993	83.9%	8.2%	7.9%	23,207
1994	82.5%	8.3%	9.1%	22,650
1995	82.7%	8.1%	9.1%	23,776
1996	82.2%	8.0%	9.6%	24,767
1997	82.0%	8.1%	9.7%	25,901
1998	82.3%	8.1%	9.5%	27,057
1999	83.2%	7.1%	9.7%	27,122
2000	82.3%	7.9%	9.8%	27,337

\* Includes Minnesota and Michigan compact agreements.

**GENDER**

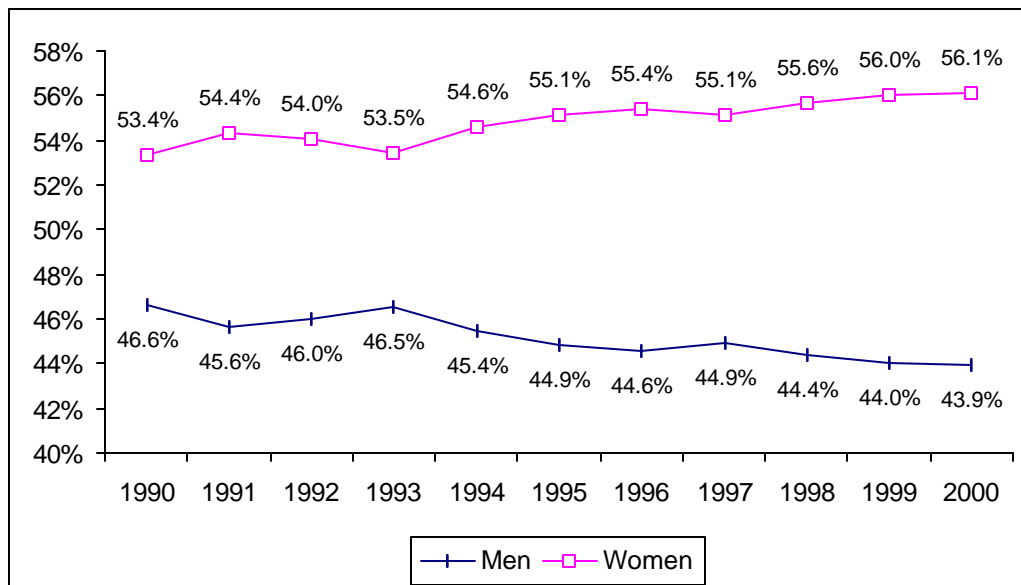
Female students comprised 56.1% of the new freshmen class in Fall 2000 while male students comprised 43.9% (Table 5). The percentage of female students by institution ranged from 36.5% at UW-Platteville to 68.7% at UW-Green Bay.

**Table 5**  
**UW System New Freshmen by Gender and Institution**  
**Fall 2000**

	Female		Male		Total
	#	%	#	%	#
MSN	3,180	55.4%	2,556	44.6%	5,736
MIL	1,617	54.3%	1,362	45.7%	2,979
EAU	1,328	63.4%	766	36.6%	2,094
GBY	684	68.7%	312	31.3%	996
LAC	1,010	62.6%	604	37.4%	1,614
OSH	983	59.5%	669	40.5%	1,652
PKS	457	55.5%	366	44.5%	823
PLT	366	36.5%	637	63.5%	1,003
RVF	691	61.4%	435	38.6%	1,126
STP	935	61.1%	595	38.9%	1,530
STO	678	51.3%	644	48.7%	1,322
SUP	244	58.0%	177	42.0%	421
WTW	1,060	51.0%	1,017	49.0%	2,077
UWC	2,100	53.0%	1,864	47.0%	3,964
<b>Total</b>	<b>15,333</b>	<b>56.1%</b>	<b>12,004</b>	<b>43.9%</b>	<b>27,337</b>

Figure 1 shows the trend in new freshmen enrollment by gender from Fall 1990 to Fall 2000. While female students have made up the majority of the UW System new freshman class for at least 14 years, the gap between percentages in female and male students, currently 12.2 percentage points, is the largest it has been in that span of time.

**Figure 1**  
**UW System New Freshmen by Gender**  
**Fall 1990 to Fall 2000**



**RACE/ETHNICITY**

In Fall 2000, students of color made up 8.1% of the new freshman class while White students made up 90.8% and international students 1.2% (Table 6). The percentage of students of color by institution ranged from 2.6% at UW-Superior to 21.3% at UW-Parkside.

**Table 6  
UW System New Freshmen by Race/Ethnicity and Institution  
Fall 2000**

	African American		Hispanic/Latino		American Indian		Asian American		All Students of Color		International		White/Unknown		Total
	#	%	#	%	#	%	#	%	#	%	#	%	#	%	
MSN	128	2.2%	127	2.2%	29	0.5%	257	4.5%	541	9.4%	123	2.1%	5,072	88.4%	5,736
MIL	274	9.2%	122	4.1%	34	1.1%	141	4.7%	571	19.2%	16	0.5%	2,392	80.3%	2,979
EAU	7	0.3%	13	0.6%	10	0.5%	47	2.2%	77	3.7%	19	0.9%	1,998	95.4%	2,094
GBY	7	0.7%	4	0.4%	15	1.5%	25	2.5%	51	5.1%	8	0.8%	937	94.1%	996
LAC	16	1.0%	32	2.0%	11	0.7%	42	2.6%	101	6.3%	7	0.4%	1,506	93.3%	1,614
OSH	13	0.8%	22	1.3%	9	0.5%	27	1.6%	71	4.3%	6	0.4%	1,575	95.3%	1,652
PKS	86	10.4%	59	7.2%	7	0.9%	23	2.8%	175	21.3%	14	1.7%	634	77.0%	823
PLT	8	0.8%	8	0.8%	1	0.1%	11	1.1%	28	2.8%	10	1.0%	965	96.2%	1,003
RVF	14	1.2%	18	1.6%	7	0.6%	35	3.1%	74	6.6%	6	0.5%	1,046	92.9%	1,126
STP	9	0.6%	15	1.0%	8	0.5%	23	1.5%	55	3.6%	30	2.0%	1,445	94.4%	1,530
STO	10	0.8%	9	0.7%	9	0.7%	20	1.5%	48	3.6%	3	0.2%	1,271	96.1%	1,322
SUP	1	0.2%	0	0.0%	7	1.7%	3	0.7%	11	2.6%	17	4.0%	393	93.3%	421
WTW	102	4.9%	53	2.6%	10	0.5%	54	2.6%	219	10.5%	10	0.5%	1,848	89.0%	2,077
UWC	41	1.0%	50	1.3%	19	0.5%	81	2.0%	191	4.8%	46	1.2%	3,727	94.0%	3,964
<b>Total</b>	<b>716</b>	<b>2.6%</b>	<b>532</b>	<b>1.9%</b>	<b>176</b>	<b>0.6%</b>	<b>789</b>	<b>2.9%</b>	<b>2,213</b>	<b>8.1%</b>	<b>315</b>	<b>1.2%</b>	<b>24,809</b>	<b>90.8%</b>	<b>27,337</b>

Although there were some year to year fluctuations within categories, the Fall 2000 proportion of White new freshmen was the lowest in the past ten years and the proportion of students of color, at 8.1%, was the highest in the past 10 years (Table 7).

**Table 7  
UW System New Freshmen by Race/Ethnicity  
Fall 1990 to Fall 2000**

	African American		Hispanic/Latino		American Indian		Asian American		All Students of Color		International		White/Unknown		Total
	#	%	#	%	#	%	#	%	#	%	#	%	#	%	
1990	560	2.3%	316	1.3%	161	0.7%	480	2.0%	1,517	6.3%	303	1.3%	22,275	92.4%	24,095
1991	526	2.2%	342	1.4%	165	0.7%	534	2.3%	1,567	6.6%	249	1.0%	21,906	92.3%	23,722
1992	566	2.5%	387	1.7%	144	0.6%	557	2.5%	1,654	7.3%	287	1.3%	20,732	91.4%	22,673
1993	603	2.6%	400	1.7%	164	0.7%	563	2.4%	1,730	7.5%	241	1.0%	21,236	91.5%	23,207
1994	498	2.2%	401	1.8%	159	0.7%	547	2.4%	1,605	7.1%	257	1.1%	20,788	91.8%	22,650
1995	548	2.3%	389	1.6%	158	0.7%	564	2.4%	1,659	7.0%	274	1.2%	21,843	91.9%	23,776
1996	536	2.2%	371	1.5%	158	0.6%	596	2.4%	1,661	6.7%	275	1.1%	22,831	92.2%	24,767
1997	683	2.6%	468	1.8%	161	0.6%	608	2.3%	1,920	7.4%	309	1.2%	23,672	91.4%	25,901
1998	701	2.6%	492	1.8%	160	0.6%	700	2.6%	2,053	7.6%	298	1.1%	24,706	91.3%	27,057
1999	701	2.6%	525	1.9%	174	0.6%	721	2.7%	2,121	7.8%	299	1.1%	24,702	91.1%	27,122
2000	716	2.6%	532	1.9%	176	0.6%	789	2.9%	2,213	8.1%	315	1.2%	24809	90.8%	27,337

**AGE**

UW System new freshmen age 19 and under make up the vast majority of new freshmen at 94.9%. The percentage of new freshmen age 20 and over is 5.1% for the UW System as a whole and ranges from 1.0% at UW-Madison to 15.8% at UW Colleges (Table 8).

**Table 8  
UW System New Freshmen by Age Group  
Fall 2000**

	19 and Under		20 to 24		25 to 34		35 and Over		Total
	#	%	#	%	#	%	#	%	
MSN	5,678	99.0%	52	0.9%	5	0.1%	1	0.0%	5,736
MIL	2,800	94.0%	130	4.4%	36	1.2%	13	0.4%	2,979
EAU	2,069	98.8%	18	0.9%	3	0.1%	4	0.2%	2,094
GBY	962	96.6%	23	2.3%	7	0.7%	4	0.4%	996
LAC	1,589	98.5%	19	1.2%	3	0.2%	3	0.2%	1,614
OSH	1,582	95.8%	47	2.8%	12	0.7%	11	0.7%	1,652
PKS	740	89.9%	65	7.9%	14	1.7%	4	0.5%	823
PLT	934	93.1%	37	3.7%	15	1.5%	17	1.7%	1,003
RVF	1,100	97.7%	19	1.7%	4	0.4%	3	0.3%	1,126
STP	1,479	96.7%	39	2.5%	8	0.5%	4	0.3%	1,530
STO	1,279	96.7%	38	2.9%	4	0.3%	1	0.1%	1,322
SUP	371	88.1%	39	9.3%	8	1.9%	3	0.7%	421
WTW	2,030	97.7%	37	1.8%	7	0.3%	3	0.1%	2,077
UWC	3,342	84.3%	391	9.9%	141	3.6%	90	2.3%	3,964
<b>Total</b>	<b>25,955</b>	<b>94.9%</b>	<b>954</b>	<b>3.5%</b>	<b>267</b>	<b>1.0%</b>	<b>161</b>	<b>0.6%</b>	<b>27,337</b>

In Fall 2000, the proportion of UW System new freshmen age 19 and under declined slightly from Fall 1999. However, the proportion had been increasing over the past ten years and is still considerably above the 1990 level. Although the other age groups have increased slightly or remained the same in Fall 2000, they have been declining since 1990. (Table 9).

**Table 9  
UW System New Freshmen by Age Group  
Fall 1990 to Fall 2000**

	19 and Under		20 to 24		25 to 34		35 and Over		Total
	#	%	#	%	#	%	#	%	
1990	21,797	90.5%	1,353	5.6%	674	2.8%	271	1.1%	24,095
1991	21,442	90.4%	1,309	5.5%	672	2.8%	299	1.3%	23,722
1992	20,797	91.7%	1,100	4.9%	530	2.3%	246	1.1%	22,673
1993	21,366	92.1%	1,056	4.6%	543	2.3%	242	1.0%	23,207
1994	20,881	92.2%	1,094	4.8%	464	2.0%	211	0.9%	22,650
1995	22,187	93.3%	983	4.1%	415	1.7%	191	0.8%	23,776
1996	23,312	94.1%	913	3.7%	351	1.4%	191	0.8%	24,767
1997	24,479	94.5%	921	3.6%	341	1.3%	160	0.6%	25,901
1998	25,700	95.0%	931	3.4%	293	1.1%	133	0.5%	27,057
1999	25,854	95.3%	878	3.2%	263	1.0%	127	0.5%	27,122
2000	25,955	94.9%	954	3.5%	267	1.0%	161	0.6%	27,337

## EDUCATIONAL PREPARATION

### ADMISSION CATEGORY

In Fall 2000, 94.9% of all UW System new freshmen admitted were conventional admits (Table 10). Older new freshmen, those 21 years of age and older as of September 1 of the Fall they first enroll, comprised 2.1% of UW System new freshman admits. New freshmen admitted as exceptions made up 3.1% of UW System new freshmen.

**Table 10**  
**UW System New Freshmen by Admission Category and Institution**  
**Fall 2000**

	Conventional		Non-Conventional			
	Standard & Discretionary	%	Older	%	Exception	%
MSN	5,598	97.6%	5	0.1%	133	2.3%
MIL	2,935	98.5%	23	0.8%	21	0.7%
EAU	2,018	96.4%	11	0.5%	65	3.1%
GBY	994	99.8%	0	0.0%	2	0.2%
LAC	1,585	98.2%	15	0.9%	14	0.9%
OSH	1,572	95.2%	39	2.4%	41	2.5%
PKS	712	86.5%	55	6.7%	56	6.8%
PLT	922	91.9%	40	4.0%	41	4.1%
RVF	1,098	97.5%	9	0.8%	19	1.7%
STP	1,466	95.8%	22	1.4%	42	2.7%
STO	1,232	93.2%	19	1.4%	71	5.4%
SUP	401	95.2%	13	3.1%	7	1.7%
WTW	1,932	93.0%	15	0.7%	130	6.3%
UWC	3,467	87.5%	300	7.6%	197	5.0%
<b>Total</b>	<b>25,932</b>	<b>94.9%</b>	<b>566</b>	<b>2.1%</b>	<b>839</b>	<b>3.1%</b>

The proportion of new freshmen admitted as conventional admits has ranged from 93.2% to 94.9% in the last decade (Table 11). The percentage of older new freshmen admits has declined from 4.3% in Fall 1991 to a low of 2.0% in Fall 1999. The percentage of new freshmen admitted as exceptions has ranged between 2.0% to 3.1% since Fall 1990, the first year these data were collected.

**Table 11**  
**UW System New Freshmen by Admission Category**  
**Fall 1990 to Fall 2000**

	Conventional		Non-Conventional			
	Standard & Discretionary	%	Older	%	Exception	%
1990	22,582	93.7%	949	3.9%	564	2.3%
1991	22,099	93.2%	1,031	4.3%	592	2.5%
1992	21,362	94.2%	821	3.6%	490	2.2%
1993	21,815	94.0%	940	4.1%	453	2.0%
1994	21,298	94.0%	822	3.6%	530	2.3%
1995	22,515	94.7%	759	3.2%	502	2.1%
1996	23,493	94.9%	634	2.6%	640	2.6%
1997	24,461	95.1%	580	2.3%	678	2.6%
1998	25,697	95.0%	590	2.2%	770	2.8%
1999	25,785	95.1%	529	2.0%	808	3.0%
2000	25,932	94.9%	566	2.1%	839	3.1%

**ACT SCORES**

Table 12 shows the average ACT composite scores of Fall 2000 new freshmen by institution. The average ACT composite score of new freshmen ranged from 26.8 at UW-Madison to 20.0 at UW-Parkside.

**Table 12**  
**UW System New Freshmen by ACT Composite Score and Institution**  
**Fall 2000**

	<b>Average</b>
Madison	26.8
Milwaukee	21.8
Eau Claire	23.6
Green Bay	22.5
La Crosse	24.0
Oshkosh	22.1
Parkside	20.0
Platteville	22.6
River Falls	22.5
Stevens Point	22.9
Stout	21.5
Superior	21.3
Whitewater	21.9
Colleges	20.2
<b>UW System</b>	<b>23.0</b>

The average ACT composite score of UW System new freshmen test takers rose slightly from 1999 (Table 13). The UW System new freshman's average ACT composite score of 23.0 is two test points higher than the national average of 21.0. Since 1990, the average ACT composite score of UW System new freshmen has ranged from 1.5 to 2.0 points above the national average.

**Table 13**  
**UW System New Freshmen by ACT Composite Score**  
**Fall 1989 to Fall 2000**

	1990	1991	1992	1993	1994	1995	1996	1997	1998	1999	2000
UW System New Freshmen	22.2	22.1	22.1	22.4	22.6	22.8	22.8	23.0	23.0	22.9	23.0
National Average	20.6	20.6	20.6	20.7	20.8	20.8	20.9	21.0	21.0	21.0	21.0

**HIGH SCHOOL RANK**

In Fall 2000, 46.3% of UW System new freshmen graduated from high school in the top 25% of their high school classes (Table 14). More than four of every five Fall 2000 new freshmen graduated in the top half of their high school classes.

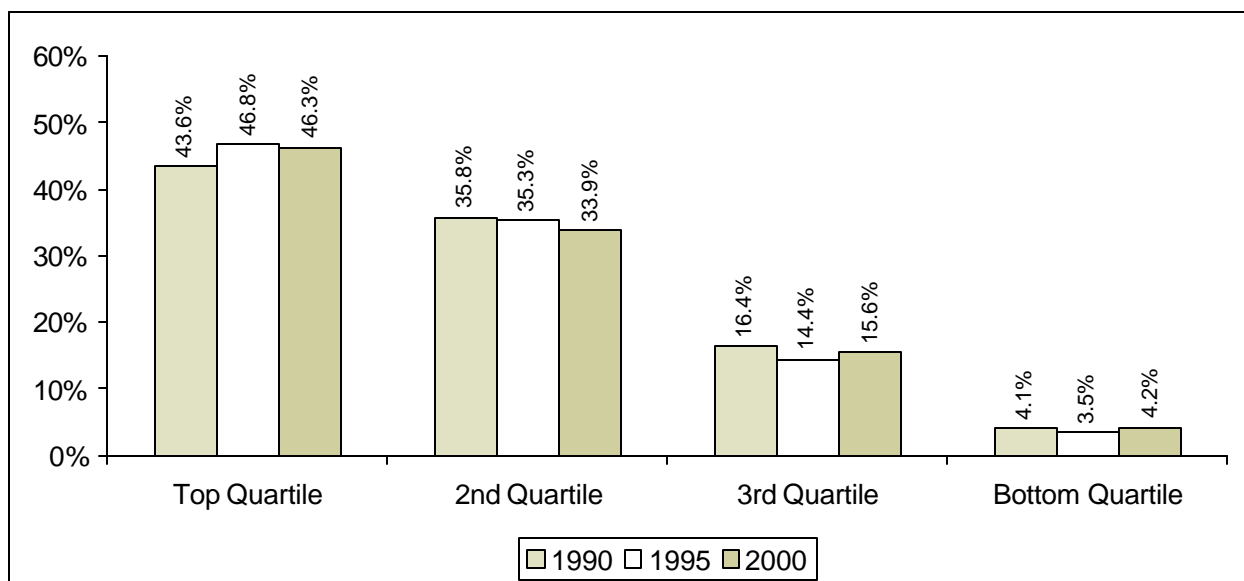
**Table 14**  
**UW System New Freshmen by High School Rank and Institution**  
**Fall 2000**

	Top Quartile		2nd Quartile		Top Half		3rd Quartile		Bottom Quartile	
	#	%	#	%	#	%	#	%	#	%
MSN	4,318	90.2%	427	8.9%	4,745	99.1%	36	0.8%	8	0.2%
MIL	793	28.8%	1,055	38.3%	1,848	67.1%	655	23.8%	251	9.1%
EAU	1,061	52.5%	809	40.0%	1,870	92.5%	151	7.5%	1	0.0%
GBY	438	46.3%	435	45.9%	873	92.2%	71	7.5%	3	0.3%
LAC	1,052	66.9%	481	30.6%	1,533	97.5%	37	2.4%	2	0.1%
OSH	508	34.4%	750	50.8%	1,258	85.2%	218	14.8%	0	0.0%
PKS	199	26.7%	233	31.3%	432	58.0%	244	32.8%	69	9.3%
PLT	333	35.9%	374	40.3%	707	76.3%	194	20.9%	26	2.8%
RVF	469	43.4%	474	43.9%	943	87.3%	123	11.4%	14	1.3%
STP	674	47.6%	691	48.8%	1,365	96.3%	52	3.7%	0	0.0%
STO	368	30.5%	595	49.3%	963	79.9%	215	17.8%	28	2.3%
SUP	117	30.5%	179	46.7%	296	77.3%	73	19.1%	14	3.7%
WTW	623	31.2%	899	45.1%	1,522	76.3%	425	21.3%	47	2.4%
UWC	551	15.5%	1,032	29.1%	1,583	44.6%	1,389	39.1%	580	16.3%
<b>Total</b>	<b>11,504</b>	<b>46.3%</b>	<b>8,434</b>	<b>33.9%</b>	<b>19,938</b>	<b>80.2%</b>	<b>3,883</b>	<b>15.6%</b>	<b>1,043</b>	<b>4.2%</b>

\*Excludes 2,473 students who did not have a high school rank.

The percentage of UW System new freshmen graduating in the top 25% of their high school classes is higher than the percentage ten years ago but slightly lower than the percentage five years ago (Figure 2).

**Figure 2**  
**UW System New Freshmen by High School Rank**  
**Fall 1990, Fall 1995, and Fall 2000**



\*Excludes students who did not have a high school rank.

**Appendix A**  
**UW System New Freshman Headcount Enrollment by Institution**  
**Fall 1972 to Fall 2000**

	MSN	MIL	EAU	GBY	LAC	OSH	PKS	PLT	RVF	STP	STO	SUP	WTW	UWC	Total
1972	4,219	3,042	2,308	668	1,605	2,226	1,183	1,020	804	1,876	994	591	1,660	2,438	24,634
1973	4,263	3,575	2,207	549	1,640	1,941	1,065	877	787	1,614	1,001	558	1,559	2,932	24,568
1974	4,394	3,358	2,419	646	1,862	1,730	1,052	897	973	1,647	1,227	511	1,443	2,930	25,089
1975	4,654	3,171	2,483	575	1,942	1,889	1,026	1,081	1,117	1,879	1,111	508	1,757	3,453	26,646
1976	3,918	2,994	2,245	560	1,884	1,709	784	1,150	1,264	1,913	1,279	485	1,915	3,158	25,258
1977	4,217	2,741	2,623	563	2,140	1,666	783	1,154	1,154	2,053	1,291	553	1,826	3,293	26,057
1978	4,683	3,165	2,555	597	2,057	1,752	909	1,040	1,199	1,960	1,414	465	1,773	2,991	26,560
1979	4,836	2,833	2,695	677	2,176	1,851	1,009	1,107	1,245	1,970	1,407	425	2,026	3,104	27,361
1980	5,021	2,845	2,737	789	2,053	1,807	1,056	1,227	1,317	2,021	1,507	446	2,165	3,461	28,452
1981	4,683	2,808	2,441	773	2,040	2,004	1,045	1,297	1,294	1,966	1,375	404	2,195	3,505	27,830
1982	4,797	2,684	2,494	714	1,928	1,797	954	1,246	1,116	1,712	1,380	382	2,082	3,606	26,892
1983	5,110	2,847	2,475	693	2,028	1,771	1,075	1,201	1,082	1,727	1,374	347	2,135	3,872	27,737
1984	5,490	2,864	2,355	708	2,072	1,869	871	1,062	1,103	1,794	1,388	321	2,189	3,658	27,744
1985	5,687	2,747	2,387	811	2,131	1,804	817	1,176	1,001	1,887	1,436	333	2,253	3,481	27,951
1986	5,383	2,677	2,470	696	2,114	1,947	886	1,127	1,145	1,821	1,419	368	2,136	3,736	27,925
EMI															
1987	5,181	2,390	2,320	817	1,977	1,857	753	1,156	1,053	1,687	1,404	375	2,152	3,775	26,897
1988	5,934	2,647	2,277	862	1,890	1,837	942	1,059	1,048	1,700	1,361	411	1,898	4,238	28,104
1989	4,993	2,461	1,934	782	1,689	1,730	757	995	957	1,690	1,143	414	1,836	3,663	25,044
1990	4,699	2,446	1,736	746	1,622	1,608	782	943	939	1,580	1,130	346	1,953	3,565	24,095
EM II															
1991	4,642	2,153	1,796	829	1,655	1,455	760	1,027	1,054	1,505	1,177	478	1,819	3,372	23,722
1992	4,416	1,880	1,869	816	1,495	1,492	769	910	1,026	1,398	1,000	363	1,785	3,454	22,673
1993	4,631	1,930	1,956	770	1,702	1,514	783	950	846	1,375	1,030	344	1,845	3,531	23,207
1994	4,681	1,806	2,088	883	1,504	1,393	770	958	1,004	1,378	1,075	285	1,704	3,121	22,650
EM III															
1995	5,164	1,988	2,038	848	1,747	1,523	744	948	968	1,504	1,144	306	1,900	2,954	23,776
1996	5,455	2,253	2,048	1,027	1,735	1,559	686	965	1,161	1,586	1,287	324	1,842	2,839	24,767
1997	5,880	2,481	2,171	953	1,706	1,758	819	998	1,152	1,551	1,250	352	1,914	2,916	25,901
1998	5,596	2,699	2,156	1,035	1,744	1,923	883	1,122	1,207	1,517	1,345	396	1,931	3,503	27,057
1999	5,664	2,937	2,016	934	1,638	1,852	889	1,138	1,127	1,500	1,324	432	1,907	3,764	27,122
2000	5,736	2,979	2,094	996	1,614	1,652	823	1,003	1,126	1,530	1,322	421	2,077	3,964	27,337

Note: EMI, EMII, and EMIII denote the years covered by the first, second, and third phases of Enrollment Management planning.

**Appendix B**  
**UW System New Freshmen by Average High School Percentile Rank and Institution**  
**Fall 1976 to Fall 2000**

	MSN	MIL	EAU	GBY	LAC	OSH	PKS	PLT	RVF	STP	STO	SUP	WTW	UWC	Overall
1976	81.2	66.9	70.9	67.8	65.8	58.8	63.3	66.8	60.4	61.1	61.8	65.3	63.3	60.9	66.8
1977	80.2	68.6	70.6	68.1	64.7	67.6	62.9	66.9	62.5	63.6	61.4	59.4	65.2	61.6	67.2
1978	79.5	65.8	70.4	65.1	66.9	58.2	62.4	67.2	62.6	64.5	60.4	62.2	63.6	61.8	67.1
1979	79.3	66.2	70.7	64.5	65.5	59.1	62.9	64.5	62.1	62.8	60.9	63.2	64.4	61.7	66.9
1980	79.8	64.8	69.9	64.8	65.7	60.2	60.9	64.9	62.2	62.2	60.4	59.0	64.6	58.9	66.3
1981	80.7	64.0	73.8	64.1	66.2	60.0	60.7	65.9	61.6	62.5	59.1	61.4	64.9	59.1	66.5
1982	80.0	67.1	72.0	62.8	64.4	60.3	62.0	63.3	63.4	61.2	57.0	64.1	63.5	58.7	66.3
1983	80.2	66.0	70.5	66.2	63.2	62.0	59.2	61.9	61.2	62.0	55.6	58.6	63.1	56.9	65.6
1984	78.9	67.0	68.6	65.7	63.0	62.6	59.6	63.3	60.0	61.7	53.2	59.1	60.7	57.3	65.3
1985	79.1	66.6	67.9	64.8	63.2	61.3	59.6	63.3	59.7	60.2	53.6	59.2	60.8	55.0	65.0
1986	78.6	66.5	69.2	63.4	61.6	62.0	60.2	63.2	58.6	61.6	54.9	58.7	62.8	53.8	64.7
EM I															
1987	80.6	65.7	68.4	63.6	63.0	63.0	60.7	65.3	60.3	65.8	56.4	60.6	64.3	51.4	65.4
1988	79.9	64.2	72.6	67.5	67.0	66.2	57.8	64.5	64.1	67.1	58.0	62.8	68.0	51.2	66.5
1989	81.4	62.9	67.4	68.8	70.0	66.4	62.9	68.4	63.9	67.6	60.7	62.6	69.8	53.7	68.2
1990	81.7	62.6	67.1	68.7	70.0	68.6	60.5	67.4	64.9	65.7	57.8	60.2	68.6	51.2	67.4
EM II															
1991	81.2	62.8	74.8	69.2	69.4	69.5	59.2	68.5	64.1	69.3	54.9	61.9	66.6	51.7	67.3
1992	82.2	62.7	75.1	71.5	70.7	71.6	58.5	71.0	66.7	70.4	63.7	65.9	65.1	51.1	68.4
1993	82.9	61.3	72.9	72.9	72.5	71.7	58.1	71.2	70.8	70.9	64.4	65.7	65.2	50.5	68.5
1994	84.6	60.7	72.8	70.9	74.9	71.3	59.0	70.3	69.1	72.7	61.2	63.9	64.9	50.3	69.1
EM III															
1995	85.6	59.7	72.4	73.2	74.8	68.9	58.3	68.2	67.6	71.7	60.1	63.9	64.7	49.6	69.1
1996	84.6	58.3	71.2	70.1	75.3	66.9	59.6	68.9	70.7	69.1	60.6	64.0	65.7	50.9	68.9
1997	85.0	58.9	71.7	71.4	76.3	67.8	59.0	67.3	70.5	71.1	61.9	62.5	64.3	50.1	69.1
1998	86.2	58.5	73.1	71.4	77.6	68.2	56.8	67.6	70.6	73.0	63.4	60.9	64.5	50.1	69.0
1999	86.3	58.5	74.8	72.4	78.4	66.9	56.3	66.8	70.8	72.7	62.5	61.8	63.9	49.1	68.5
2000	86.8	58.9	74.2	72.2	79.0	66.6	56.0	64.9	69.8	73.5	64.0	63.1	63.4	47.8	68.3

Note: EM I, EM II, and EM III denote the years covered by the first, second, and third phases of Enrollment Management planning.