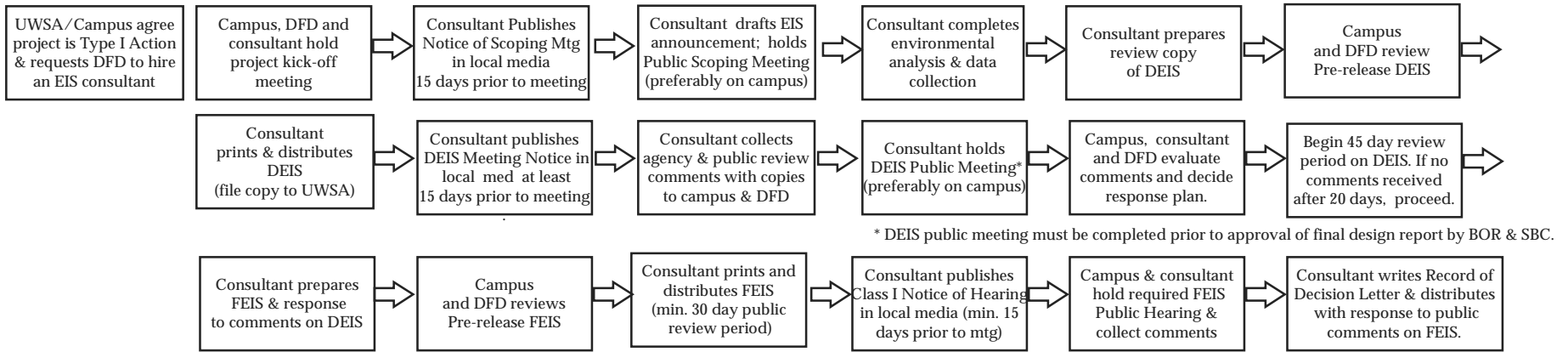


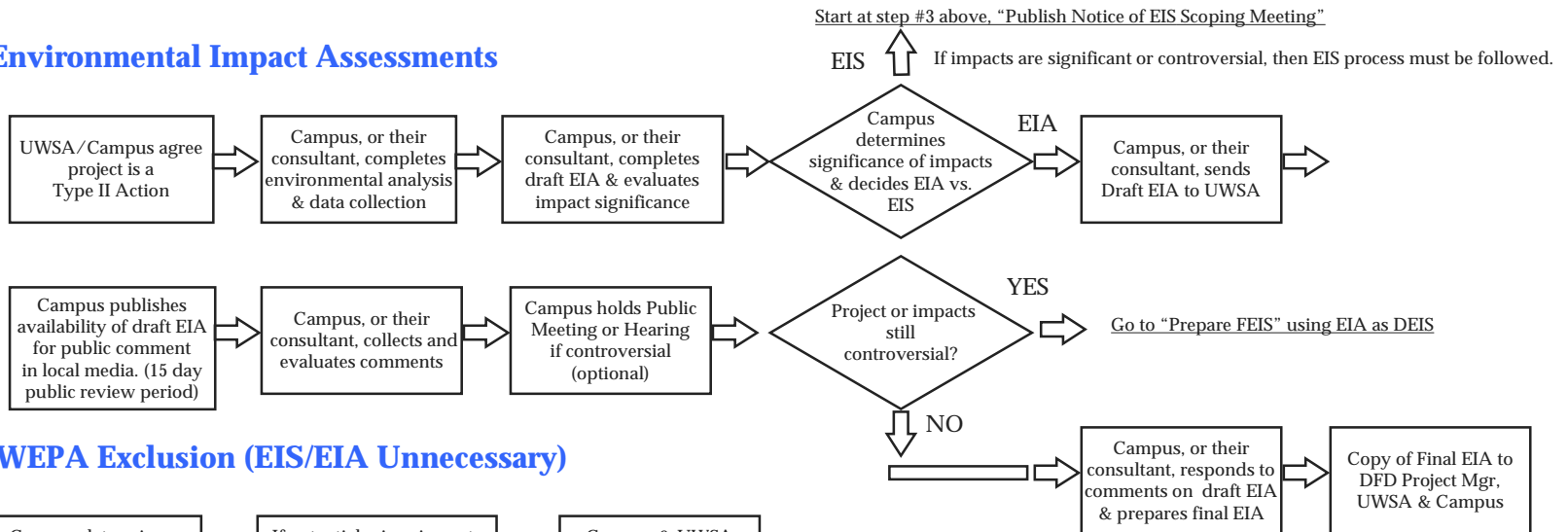
# University of Wisconsin System WEPA Process

WEPA action type decisions should be made as early as possible in the planning process and with concurrence of the UW System staff.

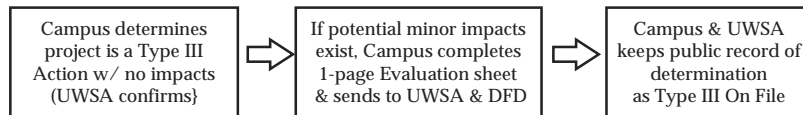
## Type I Environmental Impact Statements



## Type II Environmental Impact Assessments



## Type III WEPA Exclusion (EIS/EIA Unnecessary)



### NOTES:

UWSA = UW System Administration Environmental Affairs Officer  
 DFD = Dept. of Administration Division of Facilities Development  
 EIS = Environmental Impact Statement  
 EIA = Environmental Impact Assessment  
 (aka Environmental Assessment)  
 DEIS = Draft EIS  
 FEIS = Final EIS

BOR = Board of Regents  
 SBC = State Building Commission

Regent Resolution 2508 - 11/06/1981  
 revised Resolution 8015 - 10/08/1999  
 g:\cpb\capbud\trj\wepa\wepaflow2.ppt  
 April 2000

**NOTE:** All WEPA processes must be completed and on file with UWSA & DFD before project is bid.