

# **Increasing Baccalaureate Degree Holders**

## **Lessons from other States**

Frank Goldberg  
Associate Vice President

UW/WTCS Joint Committee on  
Baccalaureate Expansion  
May 12, 2004

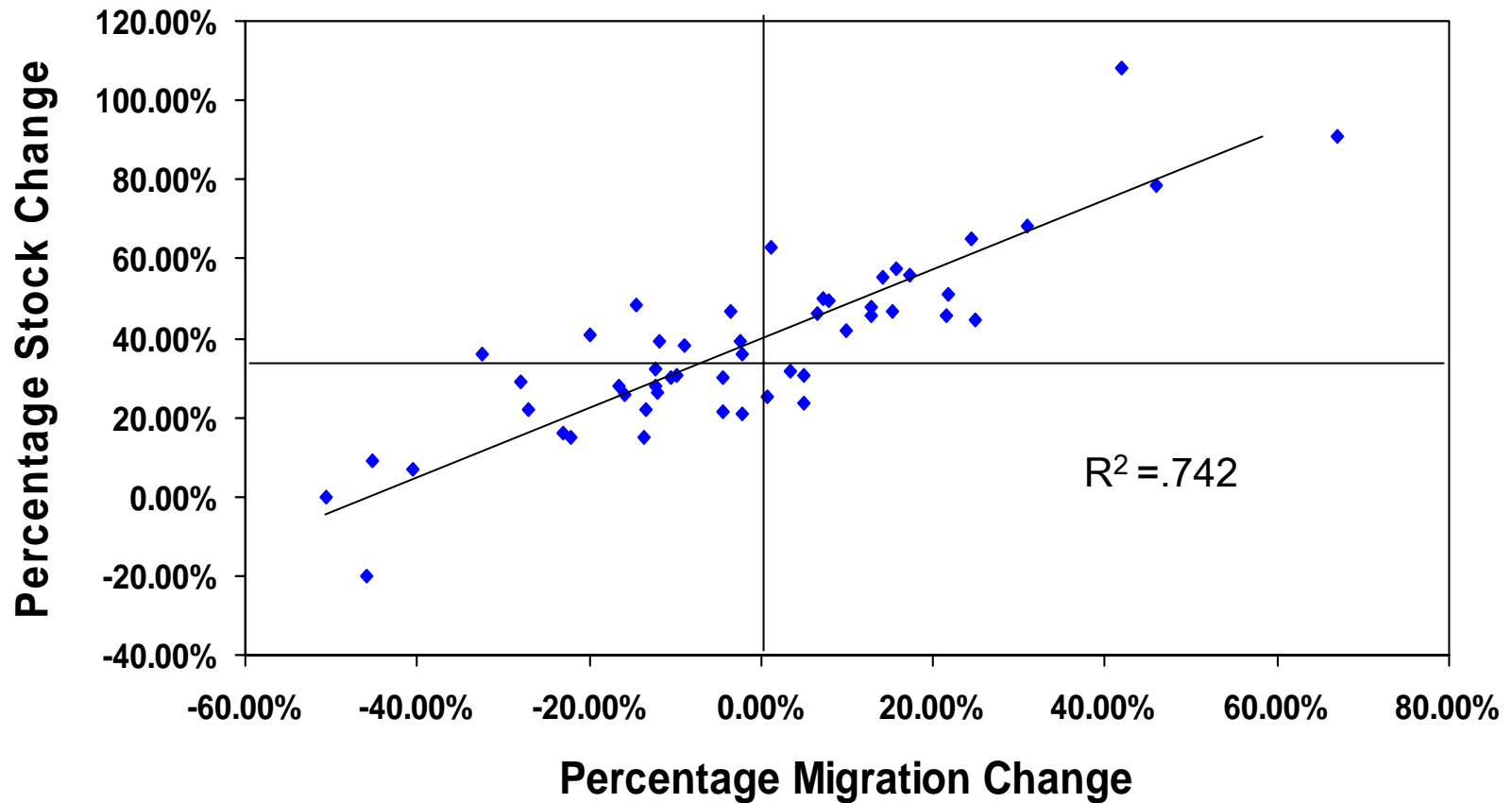
# Prescription for Increasing the Proportion of a State's Population with a College Degree

## The Easy Way\*

- Attract college graduates from other states
- Attract students from other states to enroll in public and private colleges
- Send a large number of resident students to college in other states

\*Adapted from *Postsecondary Opportunity*, April 2003 by Thomas Mortenson

# Change in Baccalaureate Stock by Stock Change due to Migration



# High Migration – Low Stock Growth

State	Migration	Stock Growth	Stock 1999 Rank	Per Capita Income Rank
New Jersey	5.0%	23.8%	8	3
Virginia	3.4%	31.9%	6	13
Connecticut	0.7%	25.1%	4	1

# High Migration – High Stock Growth

State	Migration	Stock Growth	Stock 1999 Rank	Per Capita Income Rank
Nevada	67.0%	91.0%		14
Colorado	46.0%	78.5%	2	7
Oregon	31.0%	68.4%	16	
Alaska	24.9%	44.5%		16
Minnesota	24.4%	65.1%	5	10
Washington	21.7%	51.1%	9	11
Maryland	21.6%	45.4%	3	6

# Low Migration – Low Stock Growth

<b>State</b>	<b>Migration</b>	<b>Stock Growth</b>	<b>Stock 1999 Rank</b>	<b>Per Capita Income Rank</b>
<b>California</b>	<b>-2.2%</b>	<b>20.8%</b>	<b>13</b>	<b>12</b>
<b>Illinois</b>	<b>-4.4%</b>	<b>30.1%</b>		<b>9</b>
<b>Kansas</b>	<b>-10.5%</b>	<b>30.2%</b>	<b>17</b>	
<b>Michigan</b>	<b>-12.2%</b>	<b>32.1%</b>		<b>17</b>
<b>New York</b>	<b>-13.5%</b>	<b>22.2%</b>	<b>15</b>	<b>5</b>
<b>New Hampshire</b>	<b>-16.5%</b>	<b>27.9%</b>	<b>12</b>	<b>8</b>
<b>Massachusetts</b>	<b>-23.0%</b>	<b>16.1%</b>	<b>7</b>	<b>4</b>
<b>Vermont</b>	<b>-27.0%</b>	<b>22.1%</b>	<b>10</b>	
<b>Rhode Island</b>	<b>-32.4%</b>	<b>35.8%</b>	<b>15</b>	
<b>DC</b>	<b>-45.2%</b>	<b>8.9%</b>	<b>1</b>	<b>2</b>

# Low Migration – High Stock Growth

State	Migration	Stock Growth	Stock 1999 Rank	Per Capita Income Rank
Delaware	-3.6%	46.8%		15
Wisconsin	-8.9%	38.1%	31	20
Utah	-14.6%	48.1%	11	

## Implications for Wisconsin

- Migration may not be the answer, but it may not be a barrier
- Increasing baccalaureate degree production can be an effective means to increase the stock of degree holders
- Increasing the proportion of the population with a bachelors degree is a necessary condition for increasing per capita income